

2025 University of Wyoming Cowboy Clash Invite



Basics

Entry Fees, Meals & Waivers

Base entry is \$10 for individual events, partner events are \$15 per entry.

Meal tickets \$3 per student, judge, or coach for each meal.

Please fill out this form: <https://forms.gle/EFwNc79B2367BbmJA>

Deadline to fill out the food voucher form is 3/4/25!

Friday Dinner meal will be a Dickey's Deluxe box.

Saturday Lunch will be a Jimmy John's Big Box.

Should any student, judge, or coach have dietary restrictions, please contact Eva Allred (callred3@uwyo.edu)

Judging Requirement

1 Year out in order to judge

Must have a tabroom account

Disclose team affiliations

Judge sign up form: <https://forms.gle/WDFYZMqZ5thrC4oT8>

Harassment & Discrimination Policy

All participants debate at the invitation of the University of Wyoming according to its tournament rules and the rules UW holds generally for conduct of guests. Harassment and discrimination will not be tolerated. That includes respect for all our participants' pronouns.

Schools Accompanying Students to a UW Hosted Event Policy

The University of Wyoming is making the Cowboy Clash available to schools from Wyoming and Colorado and their students in grades 9th 10th 11th 12th who are selected in a non-discriminatory manner by the school to participate. By registering students to participate in the Competition, you agree to these requirements. As school personnel or appointed chaperones, throughout the Competition you agree you will accompany your student participants at all times and you will transport and supervise your student participants in accordance with your school's policies, including, but not limited to, policies regarding the number of required chaperones, protection of minors, appropriate behavior, prohibition of harassment, student medical emergencies, release of students to parents, etc. You will be responsible for ensuring your participants follow any Competition rules and rules of the University. You agree to have emergency contact information on file with the University program representatives so you may be reached if your participating students are found needing attention during the Competition.

Open Door Policy

The University of Wyoming acknowledges that any Speech and Debate event may be an opportunity to speak on important, personal topics with great educational value. We argue this serves the wellness and development of the Speech and Debate community, so we will be using an open door policy for this tournament.

Students, coaches, and community members are encouraged to spectate any and all rounds as long as there is respect to property and competitors. Students are encouraged to leave rounds if they feel it is necessary given they are being respectful. Judges should not prevent competitors or spectators from watching or leaving a round provided such people are respectful: including a competitor that has completed their performance.

Appropriate Footwear Policy

All judges and competitors are encouraged to wear appropriate footwear because everyone will have to deal with walking around on campus in snow. All judges will not knock points off for wearing closed-shoes instead of heels.

Tournament contact information

William Ward, Tournament Director

wward3@uwyo.edu

(307) 921-071

Toby Johnson, Tournament Operator

tjohn125@uwyo.edu

(307) 281-6266

Eva Allred, Tabroom/Grid Manager

eallred3@uwyo.edu

(307) 763-6758

Justice Nelson, Communication Director

jnels110@uwyo.edu

(307) 337-5977

Mack Sermon, Director of Forensics

ssermon@uwyo.edu

Competition Pattern & Awards

Rules

This tournament will follow and enforce NSDA rules in all events unless otherwise specified within this invite (note: we will use WSDA rules for Poetry and POI). NSDA Unified Manual (Updated October 16, 2024)

<https://www.speechanddebate.org/high-school-unified-manual/>

Please send questions about rules for each event before the start of the tournament if possible. The tournament director will have final authority on rules and enforcement.

Pattern D

Public Forum Debate, Lincoln-Douglas Debate, Policy (CX) Debate, Dramatic Interpretation, Duo Interpretation, Program Oral Interpretation

Pattern Chopie

Humorous Interpretation, Original Oratory, Poetry Interpretation, Extemporaneous Speaking, Congressional Debate, Informative Speaking, Impromptu

Entry and Cross-Entry Limits

Competitors will be limited to three entries per pattern

All other competitors may double-enter in either pattern, but do so at their own risk. No “mavericking” in partner events will be allowed to break, but may compete in preliminary rounds.

Awards

Finalists (1st - 6th) in all speech events including congress, will be awarded trophies

Finalists and semi-finalists (1st - 3rd) in all debate events, will be awarded trophies.

First and Second Place Sweepstakes trophies will be awarded in 4A, 3A, and 1A/2A as defined by the Wyoming Speech and Debate Association.

Sweepstakes

PLACE	POINTS
1st place	9 points
2nd place	8 points
3rd place	7 points
4th place	6 points
5th place	5 points
6th place	4 points
7th place (if needed)	3 points
Semifinals (non-debate)	2 points

Category	School size
4A	850+
3A	300 - 849
1A/2A	1 - 299

Non-Wyoming teams will need to submit their school's enrollment information for the current year in order to be considered eligible for sweepstakes awards.

Unique Event-Specific Details

Speech

Competitors entered in **Poetry** and **POI** may use manuscripts, and they may be used as a prop. Competitors entered in **Informative** may use visual aids in line with [NSDA rules](#). In **Extemp**, questions will be taken from NFHS, NSDA, and other sources.

Debate Events

Lincoln Douglas - Resolved:

Public Forum - Resolved:

Policy - Resolved:

We ask competitors to follow the internet usage rules as defined by [NSDA](#).

Congress

Preliminary rounds will have between 12 and 18 competitors in each chamber. Approximately 15 competitors will break for finals.

Legislation will be chosen by the tournament staff on February 24th for preliminary rounds. Competitors wishing to have legislation considered must submit bills to William Ward (wward3@uwyo.edu) by 5:00 PM on Friday, February, 24th 2025. We will release the docket on Friday, February 21st, 2025 (two weeks before the tournament). Super Congress legislation will be released with the preliminary docket.

Goulash

Goulash is a new event coming to the UWYO campus. Goulash combines impromptu elements and both highschool and college level events. It does not count for sweeps, but if competitors did not break into semis we encourage them to sign up at the registration table.

Goulash is similar to impromptu because the competitor is approached with a random topic, except in Goulash the competitor is also approached with a random event from highschool and college events.

How it works: the competitors when they get into the room will draw a piece of paper out of a bucket that states the event they have to emulate (After Dinner Speaking (ADS), Drama Interpretation, Humor, Oratory/Persuasive, and Informational), then they have to draw a piece of paper with a quote. The competitors can redraw each piece of paper but they can only do it once, after they drew their second piece of paper for each bucket they have to keep it.

Each competitor has 15 minutes to prepare a 5 minute piece. Please refer to the schedule for Goulash times and each judge will have more info regarding rules. If a student is interested in joining this the sign up is at the registration desk.

Impromptu Duos

Around 5 (this is an approximate time), teams that signed up for Impromptu Duos at the registration table will be asked to go to the A&S auditorium to perform. Impromptu rules: 7 minutes to deliver and prep a piece. Placings do not count for sweeps and winners will be announced right before awards start.

We encourage teams to make their way over to the auditorium during this time! Awards will start soon after.

Schedule (Mountain Time)

Friday	March 7
12:00 PM	Registration
1:30 PM	D Pattern Round 1
3:00 PM	CHOPIE Round 1
4:30 PM	D Pattern Round 2
5:00 PM	Dinner
6:00 PM	CHOPIE Round 2
7:30 PM	D Pattern Round 3
9:00 PM	End

Saturday	March 8
8:15 AM	D Pattern Round 4
9:45 AM	CHOPIE Round 3
11:15 AM	D Pattern Semis
11:45 AM	Lunch Served
12:45 PM	Semis CHOPIE, Goulash Prelims
2:15 PM	D Pattern Finals, Goulash Finals
3:45 PM	CHOPIE Finals
5:00 PM	Impromptu Duos at Arts and Sciences Auditorium
5:30 PM	Awards held at the Arts and Sciences Auditorium (Across from Prexy's Pasture)

Parking Info

Parking Information

Due to major construction at the University, the number of bus locations are limited this year and will prove complicated on Friday, March 7th.

Bus Parking / Transportation

Friday Bus information (March 7th)

The closest area to the Enzi Center that school buses can unload/load students is the [bus shelter located at the intersection](#) of 14th & Lewis. ([Pictures](#)) There is also a yellow zone west of the bus shelter that is meant to accommodate multiple buses at the same time. It is north of the McWhinnie Hall parking lot on Lewis Street. Please be aware that Lewis Street is closed between 14th and 15th Streets. The best way to approach this unloading/loading zone is off 13th & Lewis. After unloading/loading the students, the bus can exit off the intersection at 14th & Lewis. Buses may then move out to the “Purple” long-term parking for free for the day. The lot can be found along [30th Street between Willett Drive and Armory Road](#). Bus drivers can then ride the [Express shuttle](#) back to the University if desired. On Friday, the campus buses run until 10:30 pm.

DO NOT USE A UNIVERSITY BUS STOP TO UNLOAD OR PICK UP STUDENTS

Saturday Bus Information (March 8th)

[UW Transit Map](#)

On Saturday March 8th, Fixed Route campus services do not operate. This means that buses can drop off at 14th and Lewis, or use any other bus stop located at the university including, Science Initiative, Anthropology, Knight Hall, or Classroom. A map can be found above. The Science Initiative, Anthropology stops are closest to Enzi. [Knight Hall](#) and Classroom will be the closest to Arts and Sciences Building, where awards will be held.

Regular Vehicle Parking

[Parking Map](#)

[Order a Permit](#)

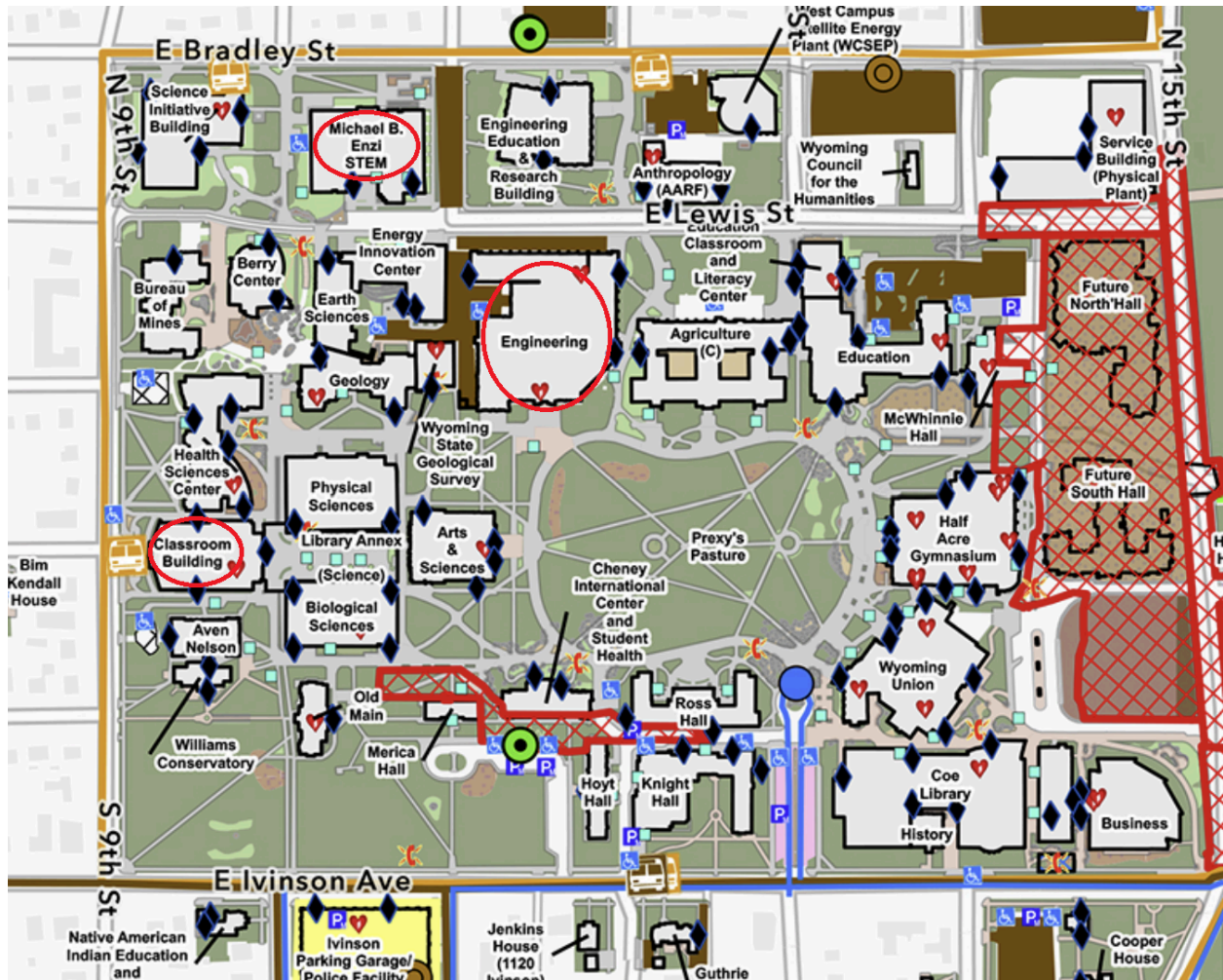
There are a few short-term parking options for individuals bringing a vehicle to campus. If people are coming with vans or passenger sized cars, they can use the loop at Simpson Plaza for loading/unloading.

1. It is recommended to purchase a day permit if you wish to park your vehicle on campus for more than a few hours. Permits can be purchased online for \$7.50/day. The best place to use the day permit is the [Ivinson Parking Garage](#).
 - a. Individuals can purchase these permits online themselves: These permits are virtual and based on the vehicle's license plate.
2. Visitors may park on the [south side of the 3rd floor of the Ivinson Parking Garage](#) for a rate of \$2.25/hour. Unlike the parking meters, there is no cap to how much time they can pay for during the day.
3. Visitors are also welcome to park at one of our remote lots located at 15th & Spring Creek or 22nd & Willett. No permits are needed. Simply park and ride the bus to campus. A bus comes every 10 minutes and it's free to park and ride!

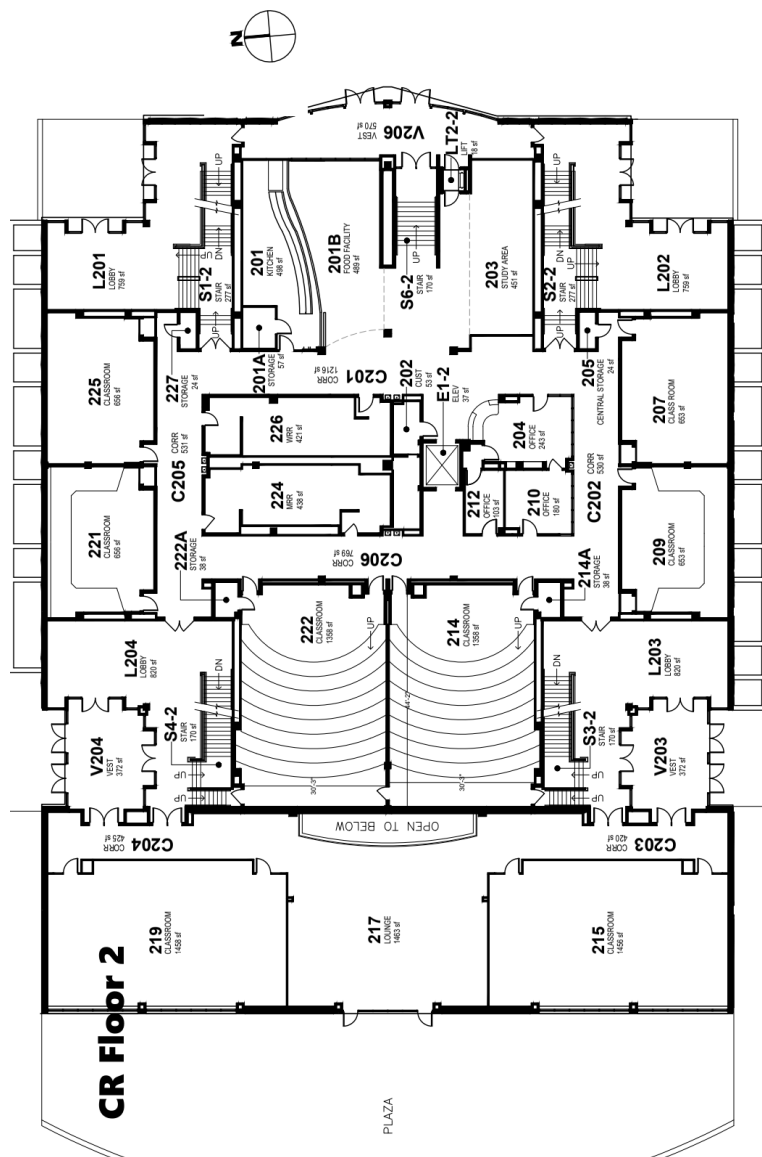
4. Lastly, free parking is also available for small vehicles around campus, typically parking can be found 3 blocks away to the west and north. Be advised, the city is ruthless in enforcing parking violations; avoid areas with city parking limitations.

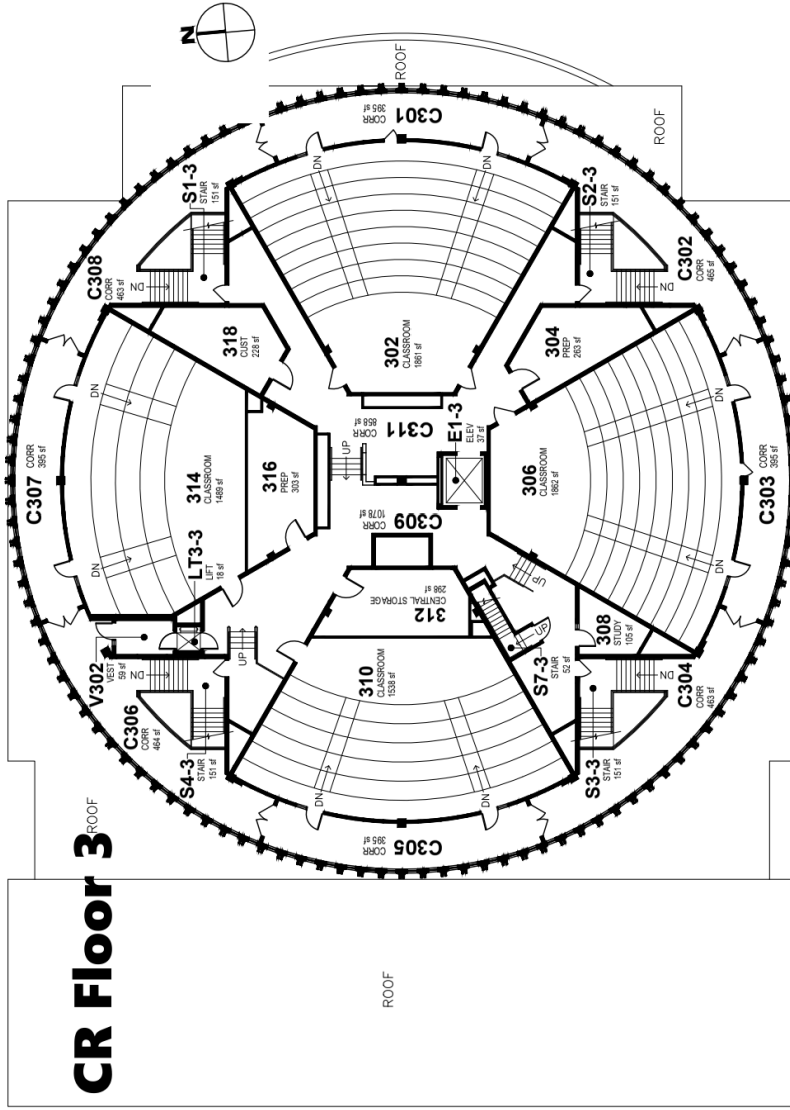
Please let us know if you have any questions or need additional information.

Maps

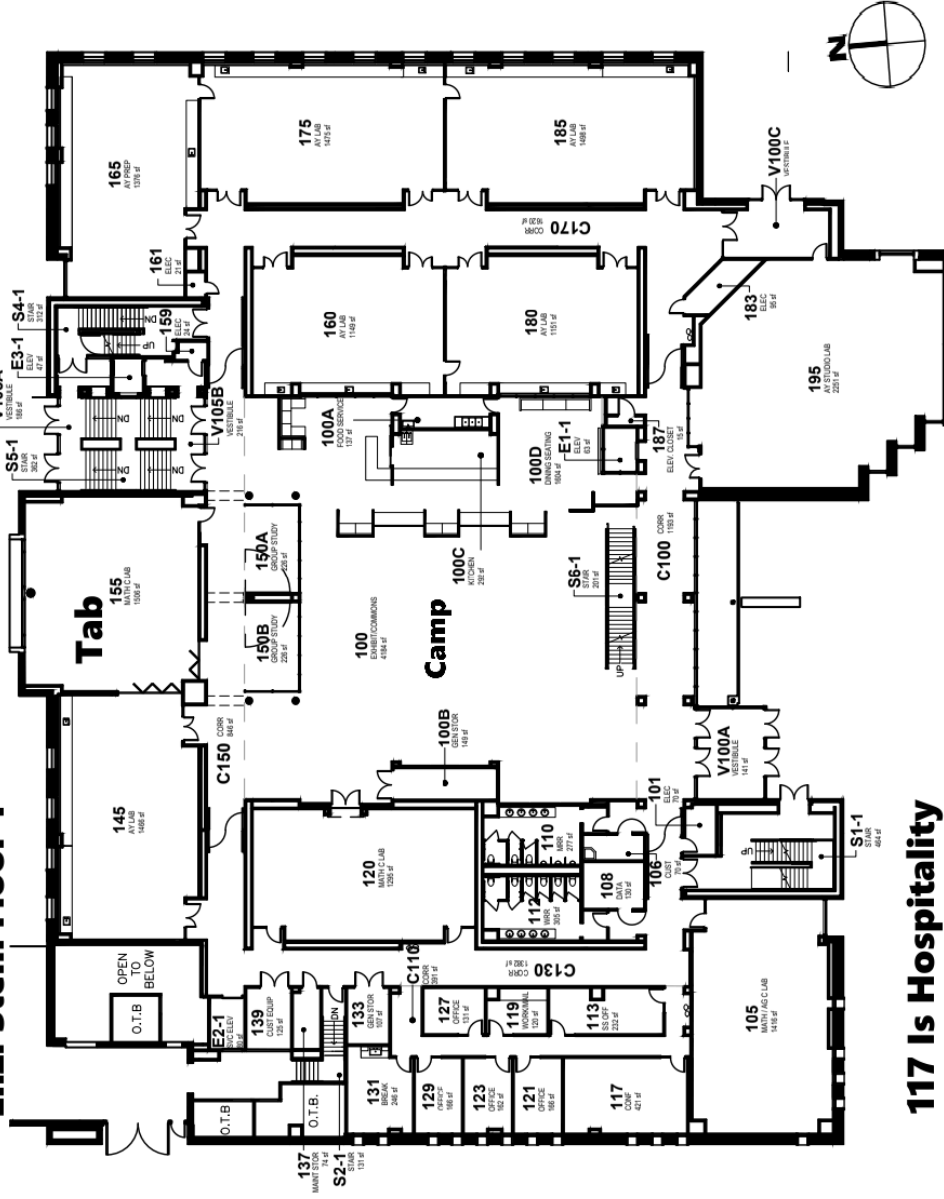


[illegible]

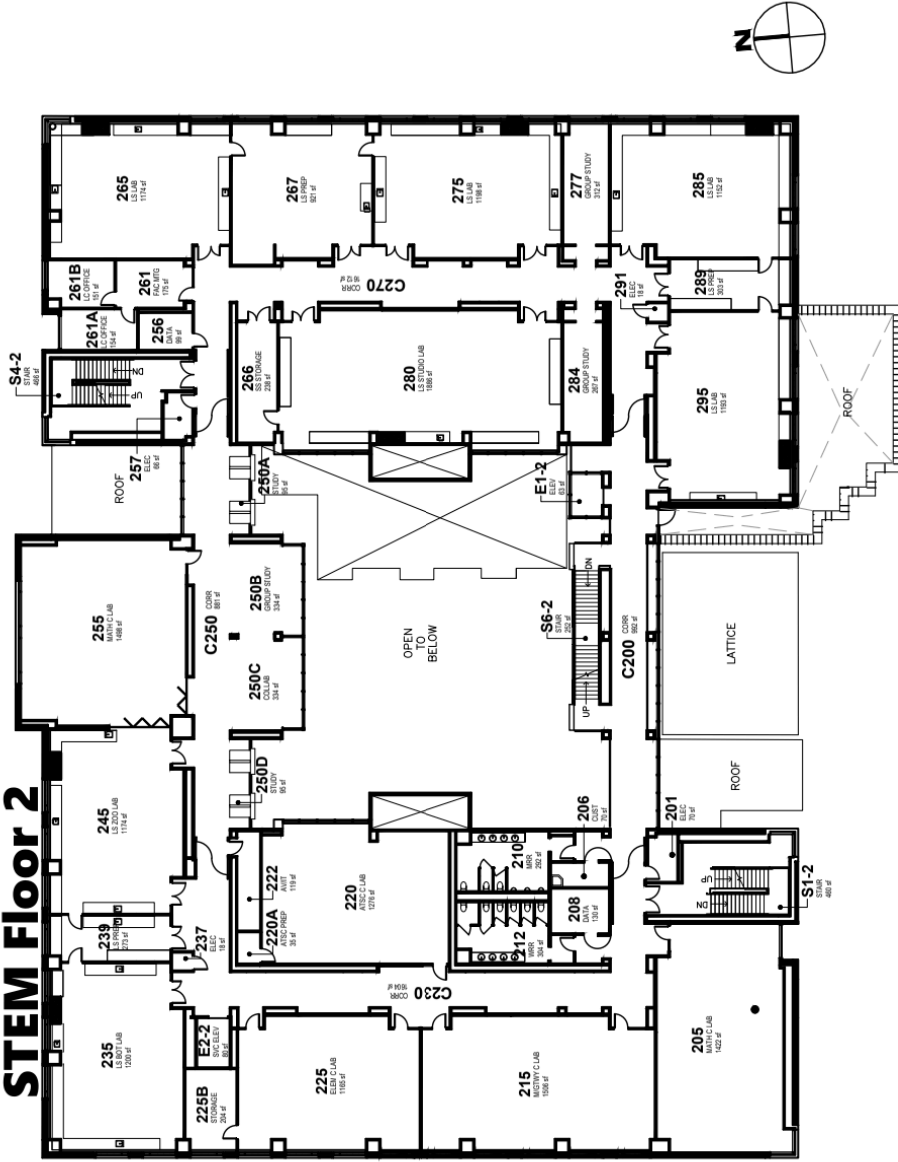




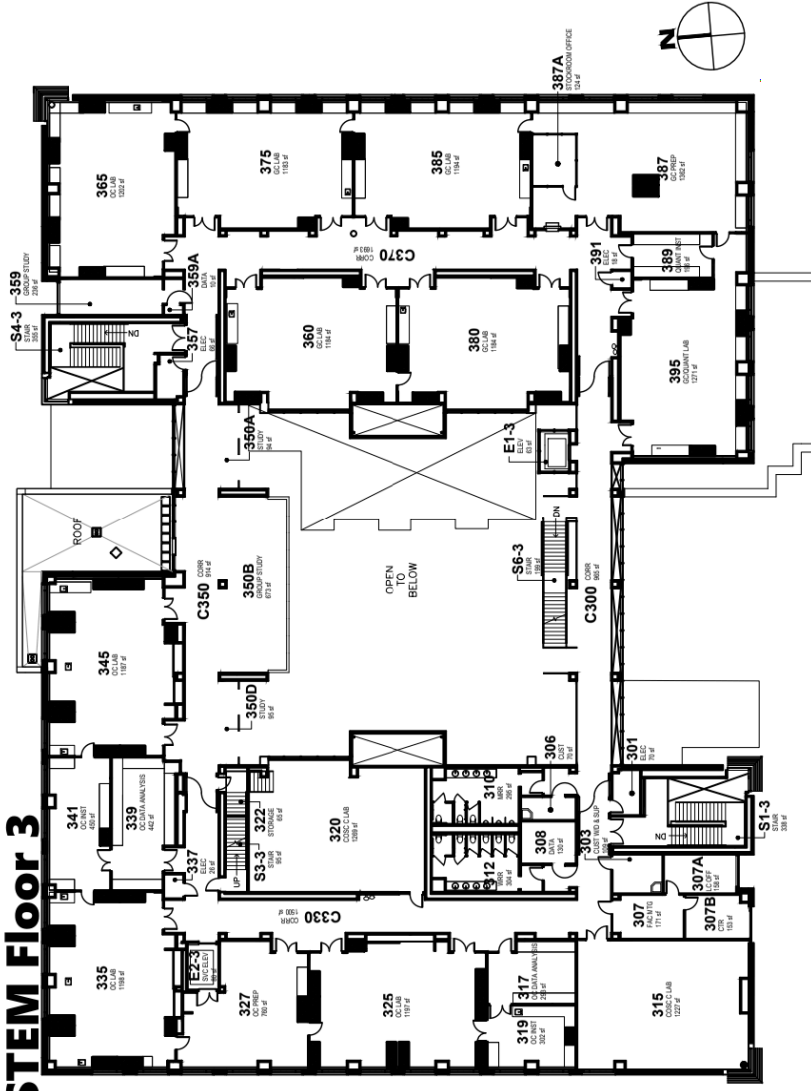
Enzi Stem Floor 1



STEM Floor 2



STEM Floor 3



**FIRST FLOOR
PLAN SOUTH**
SCALE: 3/64" = 1' - 0"

SCALE: 3/64" = 1' - 0"





**FIRST FLOOR
PLAN NORTH**

LINE



[illegible]

[illegible]

**THIRD FLOOR
PLAN SOUTH**

SCALE: 3/64" = 1' - 0"

COLLEGE OF ENGINEERING

