



Dawson's Do-Re-Mi ABC Forensics Tournament

Dawson County High School
Glendive, Montana
January 7, 2023

Head Coach: Sonja Tuma
DCHS Principal: Spencer Johnson
WMS Principal: Katy Kennedy
Activities Director: Wade Murphy

Assistant Coach: Allison Agostino
DCHS Assistant Principal: John Larsen
WMS Dean: Caleb Swanson

Registration: Initial registrations are due by January 2, 2023 at 5:00 pm. Adds/Drops after that point should be emailed to tumas@glendiveschools.org. Adds will only be made if space allows in the event without adding rooms.

Debates: LD and PF may be dual flighted. Policy is capped at 8 teams total. PF is capped at 12 total. LD is currently capped at 20 total. If we need to extend these caps, join a waitlist or email me and I'll see what I can do.

Fees: \$6 per single entry, \$12 per theater/team entry. Payment can be made at the event by PO/check or billed after the event. Feel free to drop off students at their schools before finding me at the high school to pay fees.

MHSA Rules: All events will be conducted according to the rules in the 2022-2023 MHSA handbook. All contestants will follow class A rules with the exception of judge restrictions. Coaches may need to judge. Dual entry is allowed.

Debate Topics:

Lincoln-Douglas will use the January/February 2023 topic.

Resolved: Justice requires open borders for human migration.

Public Forum will use the January/February 2023 topic.

Resolved: The United States Federal Government should increase its diplomatic efforts to peacefully resolve internal armed conflicts in West Asia.

Policy Debate will use the 2022-2023 topic.

Resolved: The United States federal government should substantially increase its security cooperation with the North Atlantic Treaty Organization in one or more of the following areas: artificial intelligence, biotechnology, cybersecurity.

Event Locations:

Drama prelims will be at Washington Middle School at 505 N. Meade Ave.

Speech and Debate Prelims and ALL FINALS will be held at Dawson County High School at 900 N. Merrill Ave.

Students will use the gymnasiums as their common rooms. (Upper mezzanine at the high school, please remind students not to walk across the DCHS gym floor in street shoes.) Please ask students to clean up after themselves, not to enter rooms until a judge is present, and to stay around the gym/cafeteria when not in rounds.

Tabbing will be in the libraries at both schools. Maps are attached below.

Bus drivers may relax in the faculty lounges or hospitality rooms at both schools.

Schedule:

Extemp draw will be 30 minutes before rounds start (8, 10, 12, 2)

Round 1 - 8:30

Round 2 - 10:30

Round 3 - 12:30

Finals - 2:30

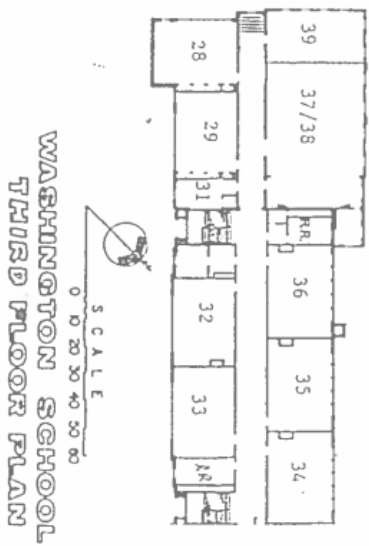
Awards will be held in the DCHS auditorium as soon as possible after Tabbing is complete.

Parking: Parking should be available on Kendrick Ave by the high school, football field, and Lloyd Square Park. There may be limited on-the-street parking by WMS.

Food: There will be concessions available in both school cafeterias. WMS will only have drinks and a few snack items. DCHS will offer drinks, snacks, and meal items until 2:00pm (menu isn't set yet- I'll send that when it is). Individuals can pay with cash/check or schools may set up tabs to be paid at the end by check or PO (bring a list of students if you want a tab). There is no ATM on campus and we can't accept credit/debit cards. Coaches, bus drivers, and judges will have food available in the FACs rooms at both schools.

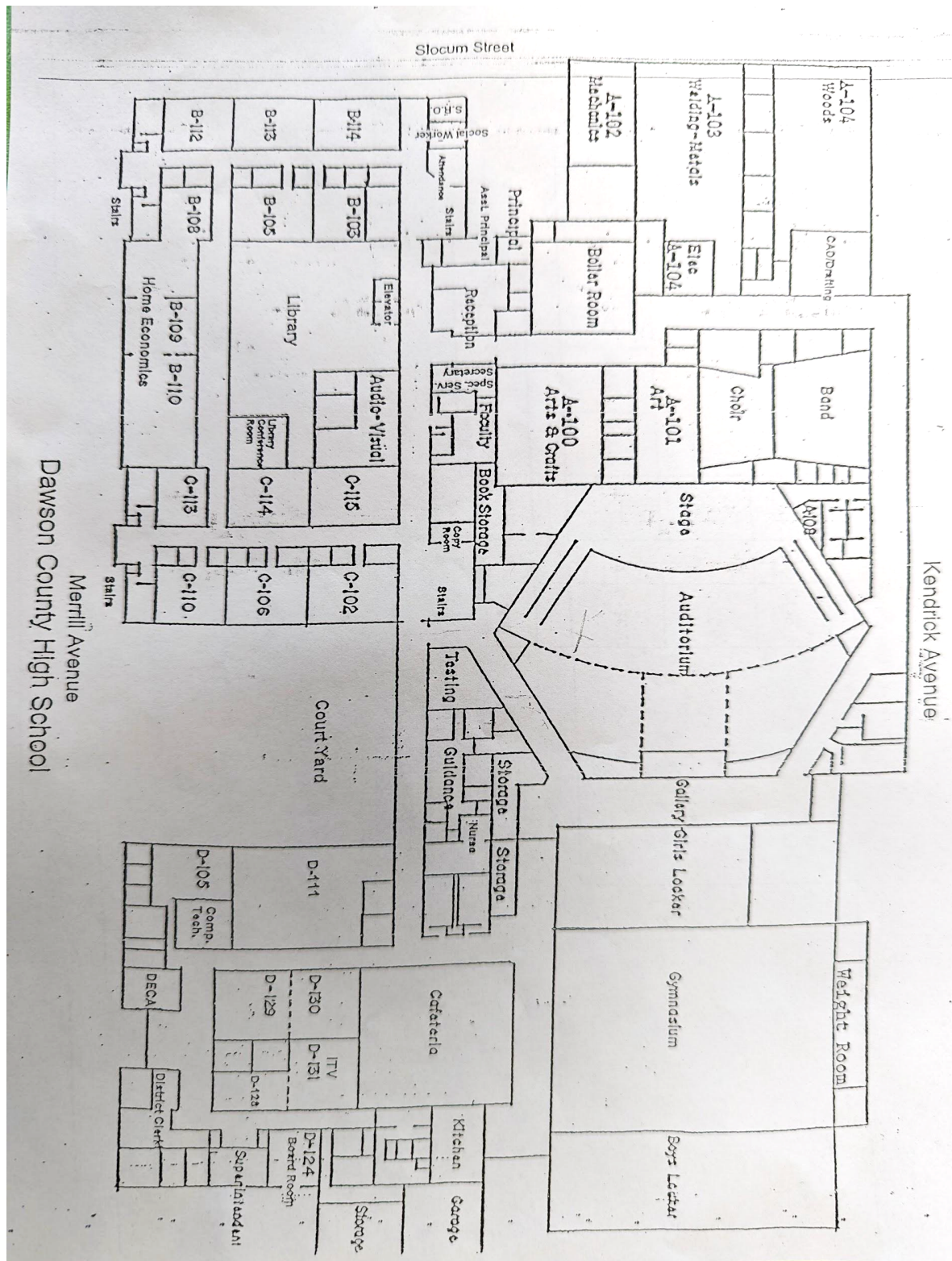
Covid protocols are up to individual coaches/schools. There are no specific instructions for DCHS/WMS.

Contact: If you have questions or concerns, please contact Sonja Tuma at 406-377-5392 (this will ring to my cell phone, but not receive texts) or tumas@glendiveschools.org.

[illegible]

1/20

DCHS First Floor



DCHS Second Floor

