



Tiger's Eye Classic 2022 AND Junior High Invitational

Bentonville High School
1801 S.E. "J" Street
Bentonville, AR 72712

Tournament Director for Debate and Forensics & Ombudsmen:

Abbey Montgomery Email: amontgomery@bentonvillek12.org

Brandon Box-Higdem Email: bboxhigdem@bentonvillek12.org

IE & Debate Drops/Add and Changes/Concerns:

bhstigerseye@gmail.com

We are excited to be hosting our annual Tiger's Eye Classic tournament taking place on Friday, September 30th and Saturday, October 1st. We will be located in both the North & South buildings this year. Forensics and Debate will receive trophies for 1st, 2nd, and 3rd. Debate semi-finalists & all finalists will receive medals. Top 3 speakers will also receive trophies and 4th to 6th speakers will receive medals. Junior High divisions will follow the same. We will utilize cumulative methods of sweepstakes tabulation, offering awards to Large School, Small School, Squad Efficiency, and Junior High divisions.

Deadline for entries will be **MONDAY, SEPTEMBER 26th by 4:00 p.m.** After this deadline, drops and additions will need to be emailed directly to bhstigerseye@gmail.com. There will be no drop fee, but getting adds and drops as soon as possible is greatly appreciated.

ENTRY FEES are as follows:

- \$20 for every IE, BQ, LD, IPDA, and Congress entry
- \$20 per Duo Interpretation entry and PF entry

JUDGES:

- 1 Judge Per 10 IE Entries, JH Debate Entries, Congress Entries
- 1 Judge Per 4 HS Debate Entries

There will be a \$10 fee for every judge you fail to provide. Judges are ALWAYS a problem, so we will be grateful for any “extra” judges you can bring! Entries may be limited for schools that do not provide the required number of judges. Please state any times your judges are unavailable on Tabroom with your registration. If your judge’s time commitment changes, please contact amontgomery@bentonvillek12.org.

ENTRIES:

Students may enter multiple events in a given round, but double entered policies must be followed, and rounds will not be held late to accommodate students with multiple entries. Students competing in Debate are permitted entry in one main event along with Congress OR an IE. NO student competing in IPDA will be permitted to double enter. **Refunds will not be granted if students miss rounds due to multiple entries.**

TABROOM:

We will be using Tabroom for registration and tabulation purposes! Tabroom will have public access to tournament related documents, pairings, and results for the tournament.

In order to register, go to www.tabroom.com and click either “login” if you have utilized this website before or “signup” if you have never previously used this site. You may either sign up with a separate account or use your NSDA login to create an account. The attached link will give step by step instructions for setting up Tabroom prior to registering: <http://docs.tabroom.com/Registration>.

The BHS Tigers Eye Tournament will be located at <http://bhstigerseye.tabroom.com> Simply click on “Registrations” and you should be able to follow the steps to completing tournament registration. **If you have any questions or concerns about Tabroom, please contact Abbey Montgomery at amontgomery@bentonvillek12.org.**

Thanks,

Student Tournament Directors & Tabroom Coordinators: Vaisakh Karuvath (Debate) and Emily Simon (Forensics)

Coaches: Brandon Box-Higdem, Director of Forensics, and Abbey Montgomery, Director of Debate

Tournament Information



High School Debate Offerings:

- **Novice:** IPDA, Lincoln Douglas, Public Forum
- **Varsity:** IPDA, Lincoln Douglas, Public Forum
- **Congress:** collapsed using the [Fall ACTAA Docket](#)
- **Big Questions:** collapsed

Junior High Debate Offerings:

- IPDA, Lincoln Douglas, Public Forum, Big Questions
- Congress is using the [Fall ACTAA Docket](#)

High School Forensics Offerings:

- **Nationals Events:** Original Oratory, POI, Informative Speaking, Humorous Interpretation, Dramatic Interpretation, Extemporaneous Speaking, Duo Interpretation, Impromptu Speaking
- **Arkansas Events:** Prose, Poetry, Duet Improv, Storytelling
- **Extra Events:** Dramatic Song Lyric, Mime

Junior High Forensics Offerings:

- **Nationals Events:** Original Oratory, POI, Informative Speaking, Humorous Interpretation, Dramatic Interpretation, Extemporaneous Speaking, Duo Interpretation, Impromptu Speaking
- **Arkansas Events:** Prose, Poetry, Duet Improv, Storytelling
- **Extra Events:** Dramatic Song Lyric, Mime

Parking:

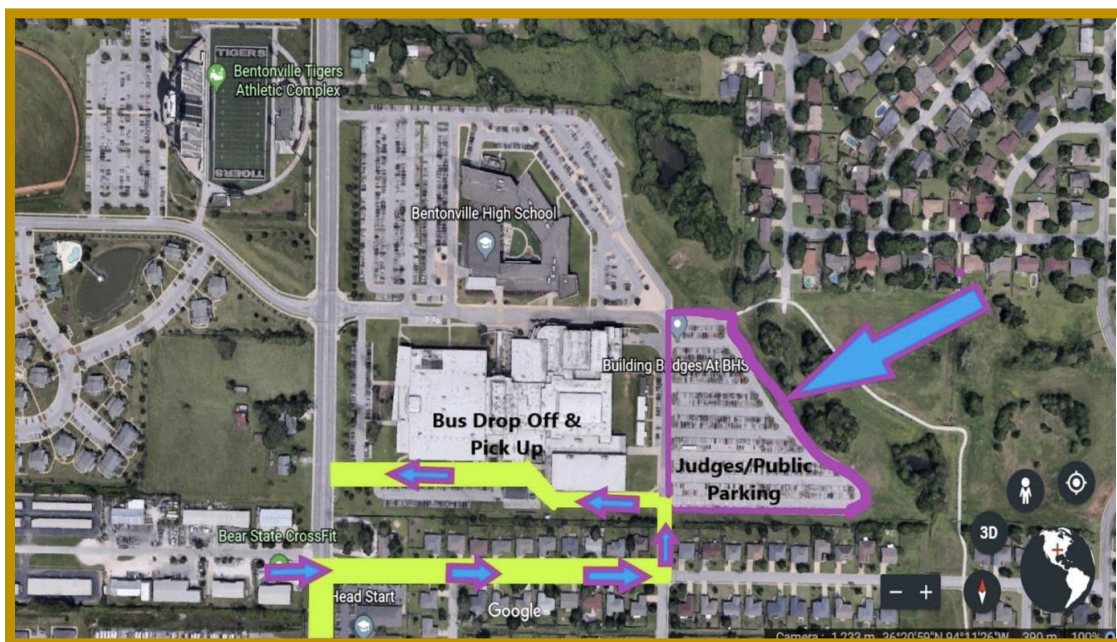
Please arrive at our campus for registration between **4:15 and 4:45** in the back parking lots behind the Arend Arts Center. Our school releases at 3:55. We have bus drivers who have to depart from our campus around 4:15.

On Friday: Bus drivers are encouraged NOT to use the main entrance to our campus but rather the side entrance on **21st Street**. Students who have been dropped off will be able to walk into the South Commons area from the gym doors on the east side. BHS students will be outside ready to greet you and give directions.

Registration in the South Commons will be between **4:00 and 5:00**. Registration will open again on Saturday morning at **8:00am**. Events will begin promptly at **4:45 on Friday**. We are asking that buses not stay on campus to allow more parking spaces for our judges.

On Saturday: Note that our band is hosting a Marching Invitational the same day across the street at the stadium. This requires greater attention to parking. Please pay CLOSE attention to the attached map for parking/ drop-off/ pick-up sites. School buses will not be able to park on site Saturday to allow for the large quantities of judges arriving to assist us with tournament duties. Please have your buses park back at your hotel, at the nearby Ruth Hale Barker Middle or Mary Mae Jones Elementary school, or BHS baseball fields. Remember this is for **SATURDAY ONLY**. All parking on our campus is available on Friday.

Saturday evening after awards, we will have a special send-off for all students. Bus pick up after awards will be on the south side of the South building by the greenhouses & daycare.



Concessions:

Our schedule does not allow for a break, so we provide an amazing concession stand! We ask that you please help support our program by eating from the concession stand we provide rather than bringing outside food into our buildings. This is one of our biggest fundraisers for our tournament season and can use everybody's help in this! We will be able to take CASH ONLY. Please inform your students, parents, and judges of this request.

Let us know if you need any food accommodations by emailing

bhstigerseye@gmail.com with the subject line "Food Accommodations".

SHIRLEY TEMPLE BAR! The 2022 Tiger's Eye Classic will have a Shirley Temple Bar available to all attending!! From the classic sprite and grenadine to a specialty club soda with grenadine, cherries, and lime - we will have a variety of combinations. Enjoy!

KARAOKE! As we are all waiting for awards to start, the south commons will have a karaoke machine for fun use - you will be able to find this at the information table there! Jam out with your friends with a song of your choice!!

Reader's Theatre + Words & Music Showcase! Pinnacle Hills Middle School will be gracing us all with an incredible showcase of their group events! This will be held in the Arend Arts Center before Awards at 4:45pm on Saturday.

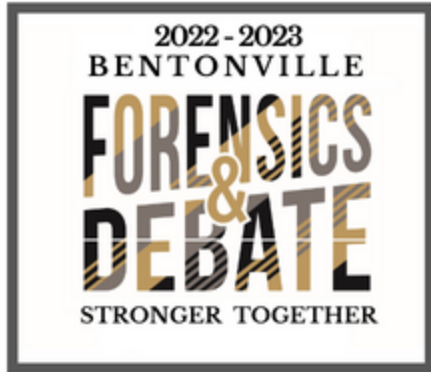
Note:

For all students who may need it, we provide a gender neutral bathroom in both buildings.

- **South building: located right outside of our Media Center, Room A 105.**
- **North Building: located on the first floor just down the hallway from our Lecture hall, faculty/staff bathrooms throughout the building available for all**

If anyone needs handicap accessible rooms, please reach out to us! We most certainly can provide you with these! Our campus is very easy to navigate via elevators, etc. but we want to make sure everyone's tournament experience is as awesome as it can be!

Lastly, we as the Bentonville High School Speech and Debate Team are committed to making the 2022 Tiger's Eye Classic the best experience possible! Do not hesitate to approach any of us with questions, comments, or concerns - we will get you what you need right away. We hope you have a fantastic tournament, have fun!!



Tentative Tournament Schedule

High School Forensics

Pattern A: PRO, POE, IMP, DI, EX, STO

Pattern B: DUO, HI, POI, OO, INF, DUET IMPROV

Extra Events: Dramatic Song Lyric, Mime

Friday, September 30th:

Pattern A Round #1

EX Draw - 4:45 pm

Prelim #1 - 5:15 pm to 6:45pm

Pattern B Round #1 - 5:45 pm to 7:00 pm

Pattern A Round #2

Flight A EX Draw - 6:45 pm

Flight A Prelim #2 - 7:15 pm to 8:45pm

Pattern B Round #2 - 7:30 pm - 9:00 pm

Saturday, October 1st:

Mime Finals and DSL Prelims 8:30 am to 9:45 am

Semis Extemp Draw - 10 am

High School Forensics/Dramatic Song Lyric Semi-Finals - 10:30 am - 12:00 pm

Extemp Draw - 1:00 pm

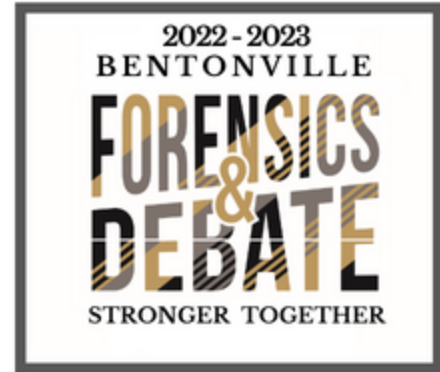
High School Forensics/Dramatic Song Lyric Finals - 1:30 pm to 3:00 pm

Tournament Schedule

High School IPDA (Novice)

NIPDA will run under 3 different divisions: Ham, Thompson, & Woods

- Students will stay in the same flight pattern every round
- Each division will have one respective winner



Friday, September 30th:

Novice IPDA Round #1

Flight A IPDA Draw - 4:45 pm
Flight A Prelim #1 - 5:15 pm

Flight B IPDA Draw - 5:15 pm
Flight B Prelim #1 - 5:45 pm

Novice IPDA Round #2

Flight A IPDA Draw - 6:10 pm
Flight A Prelim #2 - 6:45 pm

Flight B IPDA Draw - 6:35 pm
Flight B Prelim #2 - 7:05 pm

Novice IPDA Round #3

Flight A IPDA Draw - 7:30 pm
Flight A Prelim #3 - 8:00 pm

Flight B IPDA Draw - 7:55 pm
Flight B Prelim #3 - 8:25 pm

Saturday, October 1st:

Novice IPDA Draw - 8:30am

Novice IPDA Octos - 9am to 10am

Novice IPDA Draw - 10:30am

Novice IPDA Quarters - 11am to 12pm

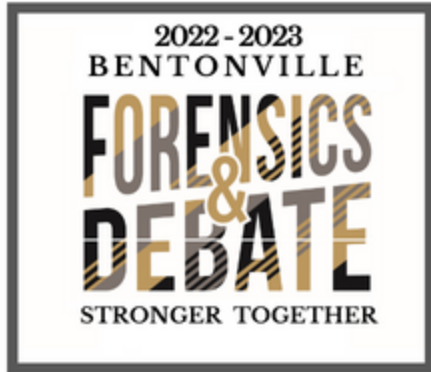
Novice IPDA Draw - 12:30 pm

Novice IPDA Semi-Finals (Single Flight) - 1 pm to 1:30 pm

Novice IPDA Draw - 2 pm

Novice IPDA Finals (Single Flight) - 2:30pm to 3 pm

*****AWARDS ASAP*****



Tournament Schedule

High School IPDA (Varsity)

Friday, September 30th:

Varsity IPDA Round #1

Flight A IPDA Draw - 4:45 pm
Flight A Prelim #1 - 5:15 pm

Flight B IPDA Draw - 5:15 pm
Flight B Prelim #1 - 5:45 pm

Varsity IPDA Round #2

Flight A IPDA Draw - 6:10 pm
Flight A Prelim #2 - 6:45 pm

Flight B IPDA Draw - 6:35 pm
Flight B Prelim #2 - 7:05 pm

Varsity IPDA Round #3

Flight A IPDA Draw - 7:30 pm
Flight A Prelim #3 - 8:00 pm

Flight B IPDA Draw - 7:55 pm
Flight B Prelim #3 - 8:25 pm

Saturday, October 1st:

Varsity IPDA Draw - 8:30am

Varsity IPDA Quarters - 9am to 10am

Varsity IPDA Draw - 10:30am

Varsity IPDA Semi-Finals - 11am to 12pm

Varsity IPDA Draw - 12:30 pm

Varsity IPDA Finals (Single Flight) - 1 pm to 1:30 pm

*****AWARDS ASAP*****

Tournament Schedule

High School Debate

Events: Collapsed PF
Varsity BQ, Novice & Varsity LD

Friday, September 30th:

Debate Round 1

Flight A Prelim #1 - 4:45pm

Flight B Prelim #1 - 5:30pm.

Debate Round 2

Flight A Prelim #2 - 6:30 pm

Flight B Prelim #2 - 7:15 pm

Debate Round 3

Flight A Prelim #3 - 8:15 pm

Flight B Prelim #3 - 9 pm

Saturday, October 1st:

Debate Elim 1

Flight A Elim #1 - 8:30 am

Flight B Elim #1 - 9:15 am

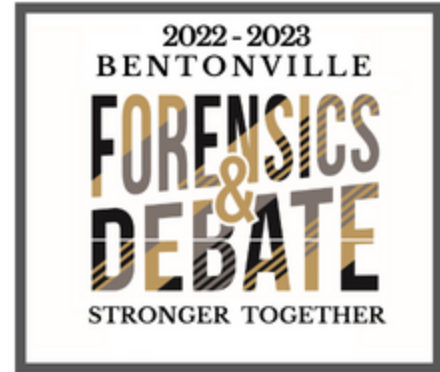
Debate Elim 2

Flight A Elim #2 - 10:30 am

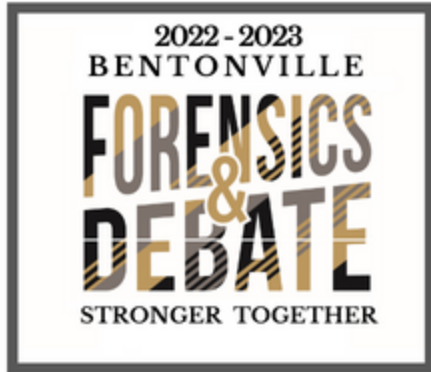
Flight B Elim #2 - 11:15 am

ALL DEBATE Semi-Finals - 12:30 pm

ALL DEBATE Finals - 2:00 pm



*****AWARDS ASAP*****



Tournament Schedule

**Novice & Varsity
Congressional Debate**

Congress: [Fall ACTAA Docket](#)

Friday, September 30th:

Varsity Congress Session #1 - 5:30 pm to 8:00 pm

Saturday, October 1st:

Novice Congress Session #1 - 8:30 am to 11:00 am

Varsity Congress Session #2 - 8:30 am to 11:00 am

Novice Congress Session #2 - 12:00 pm to 2:30 pm

Varsity Congress Finals - 12:00 pm to 2:30 pm

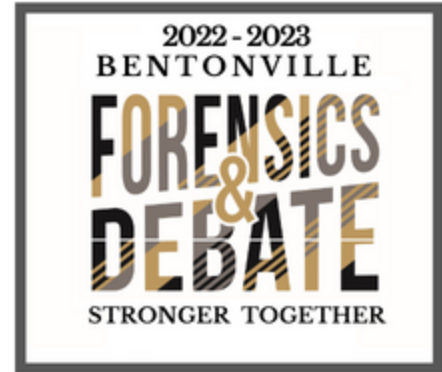
*****AWARDS ASAP*****

Tournament Schedule

Junior High Forensics

All junior high events will be going straight to outrounds

- JH Duo will start in prelims on Friday
- JH DI, Duet Improv, HI, POE, PRO, and STO will start in semis on Saturday
- JH EX, IMP, INF, Mime, DSL, OO, and POI will go straight to finals and start on Saturday



Friday, September 30th:

JH Duo Interpretation Prelim - 5:45pm to 7:00pm

Saturday, October 1st:

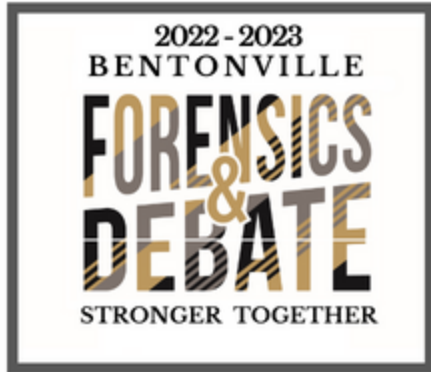
Junior High Forensics Semis - 9:30 am to 11:00 am

Extemp Draw - 12:00pm

Junior High Forensics Finals - 12:30 pm to 2:00 pm

Junior High Group Event Showcase - 3pm - Arend Arts Center

*****AWARDS ASAP*****



Tournament Schedule

Junior High Debate

Debate Events: BQ, IPDA

Friday, September 30th:

IPDA Draw - 4:45 pm

Debate Round 1 - 5:15 pm - 6:30 pm

IPDA Draw - 6:30 pm

Debate Round 2 - 7:00 pm - 8:15 pm

IPDA Draw - 8:00 pm

Debate Round 3 - 8:30 pm - 9:45 pm

Saturday, October 1st:

IPDA Draw - 8:30 am

Elim Round #1 - 9:00am to 10:15am

IPDA Draw - 11:30am

Elim Round #2 - 12:00pm to 1:15 pm

***** AWARDS ASAP *****