

Eclipse T180

Instruction Manual

Congratulations on purchasing your Eclipse Personal Media Player! To get the most out of your purchase, please take the time to carefully read through this manual.

Foreword

If any problems occur while using your Eclipse, please feel free to contact Mach Speed technical support at 580-272-0035, or send an email to mssupport@machspeed.com.

Thank you for your support and cooperation!

Mach Speed Technologies bears no responsibility for any damage or loss of personal data due to misuse of software and/or hardware, damage to the player caused by human factors, replacement of battery, or other unforeseen circumstances. To prevent loss of your data, please backup your data regularly.

Information in the manual is subject to change without notice and is subject to copyright protection. Copying or otherwise reproducing this material without prior written consent is prohibited.

Due to Firmware changes, some of the pictures and functions described in this manual may not be the same as those included with your player.

Note:

- The playback times listed refer to the maximum playback times possible, using the best power savings. The actual playback time may differ as adjustments to screen brightness; power savings modes, volume, etc. are made.
- As there are many brands of Micro SD cards in market, using different quality and speed standards. Therefore, we are unable to guarantee that our product will be compatible with all types or brands of Micro SD cards, but will be compatible with those Micro SD cards with mainstream specifications in the market. We constantly strive to provide the largest selection of cards possible.
- As parameters such as formats, bitrate, codecs, framerates, and resolutions differ, the player will not be compatible with all listed files. If you are experiencing issues playing your files on this player, we recommend using a supported conversion tool to reconvert your file to the specifications of the device.

Caution

Modifications not approved by the party responsible for compliance could void the user's authority to operate the equipment.

NOTE- This equipment has been tested and found to comply with the limits for Class B Digital device, pursuant to part 15 of the FCC rules. These limits are designed to provide reasonable protection against harmful interference in a residential installation. This equipment generates, uses, and can radiate radio frequency energy. If not installed and used in accordance with the instructions, may cause harmful interference to radio or telephone reception, which can be determined by turning the equipment off and on. The user is encouraged to try to correct the interference by one or more of the following measures:

Reorient or relocate the receiving antenna.

Increase the separation between the equipment and the receiver

Connect the equipment to an outlet on a circuit different from that to which the receiver is connected.

Consult the dealer or an experienced radio/TV technician for help.

Caution

- Do not use the player in exceptionally cold, hot, dusty, damp or dry environments.
- Do not drop, strike, or throw your player. Physical damage to your player will void ALL warranties.
- Please charge your battery when:
 - Battery power icon shows an empty icon;
 - There is no response if you tap a button
- Please always follow the correct disconnect procedures for your operating system. Do not disconnect power abruptly when the player is being formatted or in the process of uploading or downloading files. Otherwise it may lead to file corruption, firmware failure, and even hardware damage.
- We are not liable for any loss of data stored on this device.
- Please do not dismantle this player. Any disassembly not done by an authorized technician will void ALL warranties
- This product and manual are Subject to change without notice.

Features

- Touch Screen Operating system for easy use.
- 1.8", 160X128 resolution, 260k color TFT touch screen.
- Supports the following audio formats: MP3, WMA (non encrypted).
- Supports the following image formats: JPG, BMP, GIF.
- Supports the following Video formats: AMV video at 160x128 resolution.
- Supports eBook files in TXT format.
- Built in Audio Recording software, which allows you to make voice notes in WAV format.
- Built in Micro SD card slot for expandable memory.

Basic Operations

Powering on

To power the player on, press and hold the power button for 5 seconds until the eclipse logo displays on the screen.

Powering off

To power the player off, press and hold the power button for 5 seconds until the screen displays Bye-Bye and then goes dark.

Locking and Unlocking the touch screen

When the screen powers down (Due to the battery saving auto dim feature in settings) the screen will lock to prevent accidental screen taps.

When you touch a button on the top of the device to bring your screen back up, it will still be locked, and you will see the below image.



To unlock your screen, press and hold the minus button (-) until the screen displays a lock unlocking.



Charging

To charge your player, simply connect the device to a powered USB port on your computer, or an AC adapter with an output of 5V and 1Amp.

Inserting and removing the Micro SD card

Inserting: Ensure that the player is powered off, and disconnected from the computer. Hold the Micro SD card face up (side with words aligned in the opposite direction of the display screen), and slide the card into the socket on the player, slightly past flush. When you hear the card click into place, you can access the card.

Removing: Ensure that the player is powered off, and push the SD card just past flush. When you hear the click, release pressure, and the card will slide out.

Caution: Please ensure that the power is off when you connect or disconnect your SD card, or damage may occur to the player or your card.

Loading files

Using Windows Media Player

(Note: You must use Windows Media Player 10 or later to use this feature.)

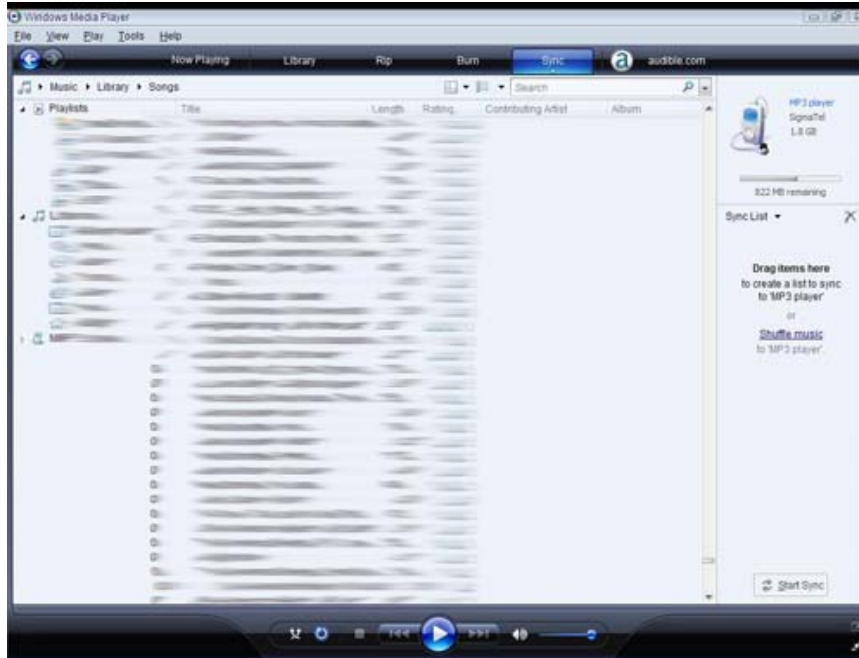
(Note: This player does not support DRM encrypted audio or video files, such as those downloaded from the Windows Media Player “Overdrive” download service.)

1. Open Windows Media Player, go to the “Sync” tab and connect the player to a working USB port. Windows Media player will prompt you with a setup screen asking you to name the MP3 player.

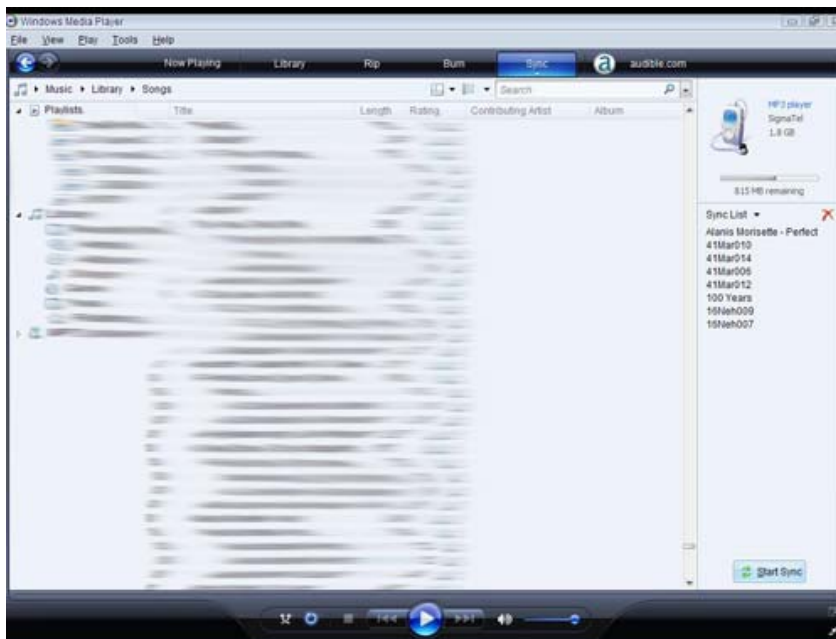
Note- Most newer computers will name the player automatically, and this screen may not display.



2. Once you have named your MP3 player, select “Finish”, and your Windows Media Player will open to the Sync tab.



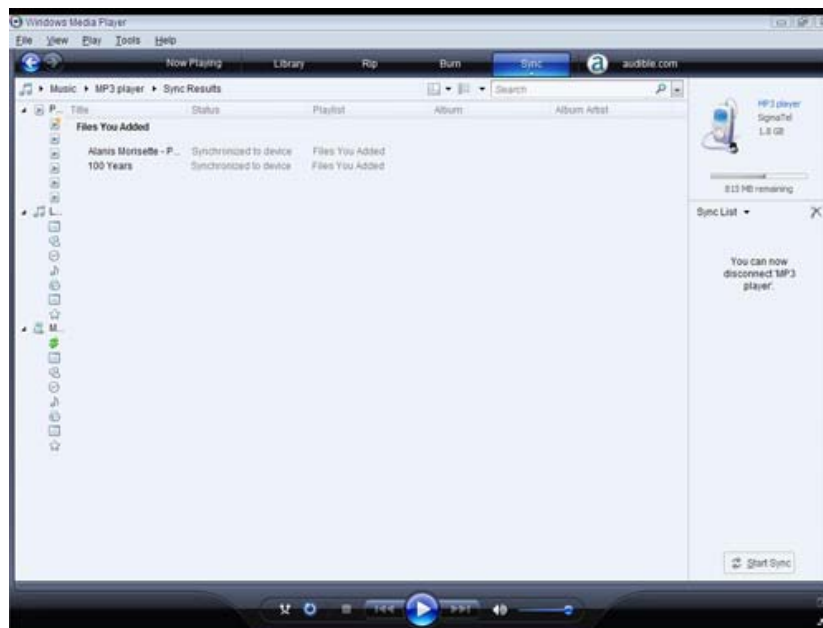
3. Drag your music to the sync list (on the right of the screen) from the list on the left. Once you have selected the music you wish to add to the player, press “Sync”, or “Start Sync.”



4. Windows Media player will load the songs on to your player.



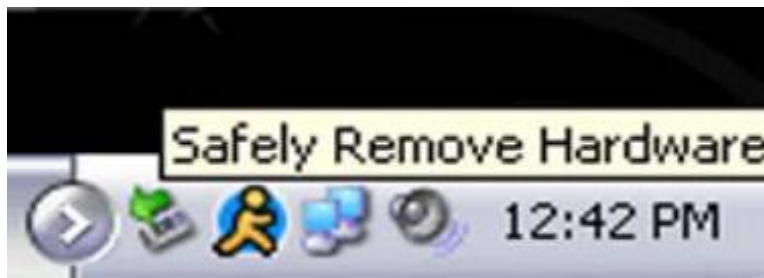
5. Once all the songs you have added are synced to the unit, and Windows Media Player says that is safe to disconnect your MP3 player, disconnect the device.



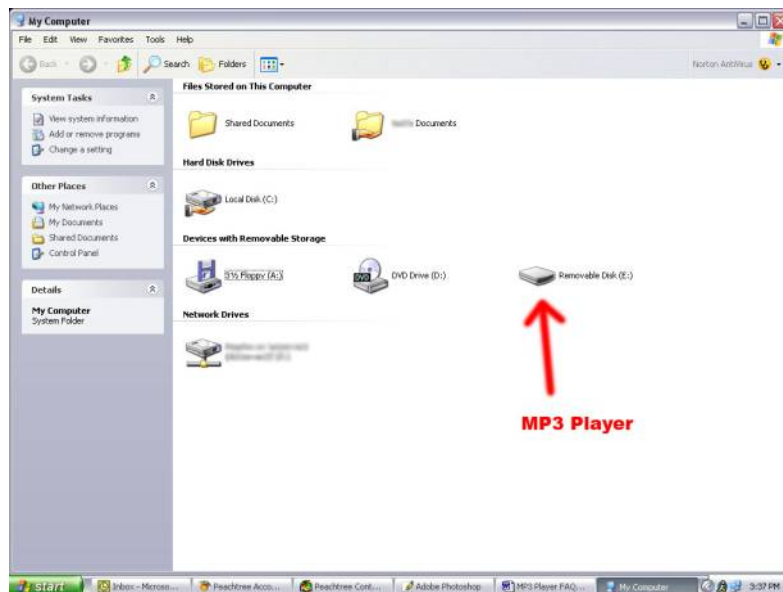
COPY AND PASTE

Note- This alternate method is used to load videos, pictures, and ebook files as well as audio files.

1. Connect the MP3 player to a working USB port.
2. When the unit is connected to your computer, it will create a gray and green icon in the system tray (lower right hand corner of your desktop). The icon will be called Safely Remove Hardware.



3. Go to the “My Computer” section of your computer. There you will find a section called “Devices With Removable Storage”

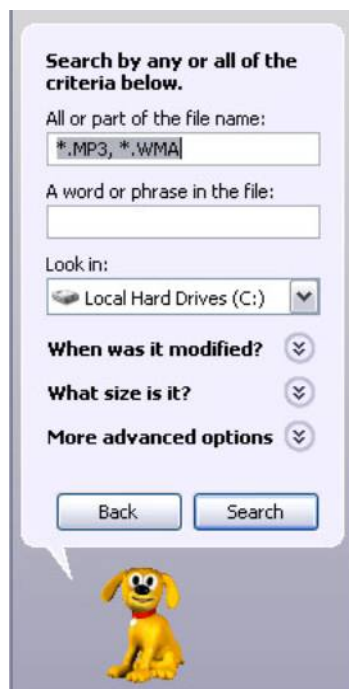


4. Locate the drive created by the unit, generally just called Removable Disk, with a letter in Parenthesis. Drive letters vary depending on your system configuration.
5. Open the drive by either double left clicking on the drive itself, or by right clicking to open the option menu then left click on the desired drive.

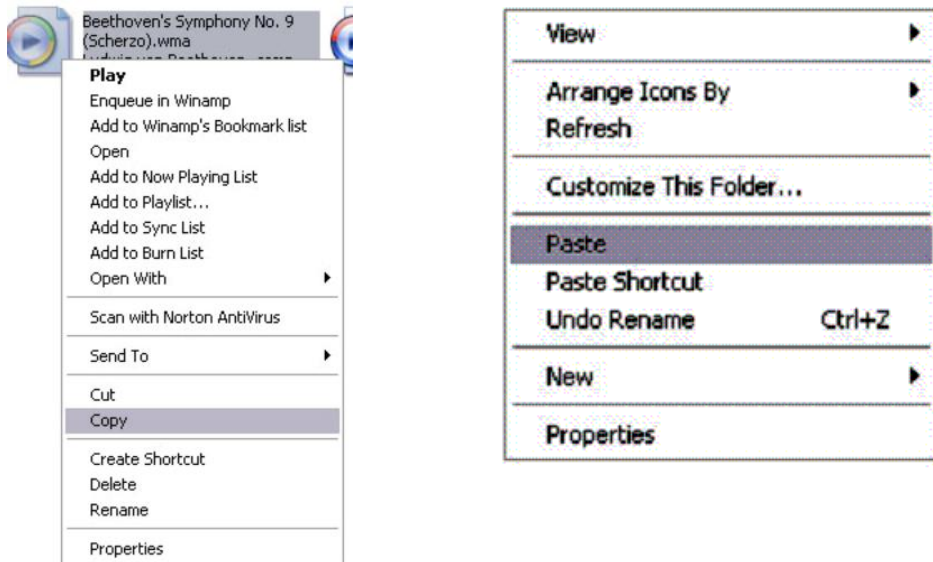


6. Locate the music stored on your computer. Generally this is stored in the “My Music” folder of your computer.

NOTE: If you are unable to locate the music on your computer, click on start, search, files and folders, then search for “*.MP3, *.WMA”.



7. Once you have located the song files, you can right click on the song itself, and select “Copy”. Open the removable disk drive, right click on in the empty space, and select “Paste.” This will transfer the song on to your player.




8. Repeat step 7 for as many songs as you want to copy on to the unit.

NOTE: MAC Computers

When connected to your MAC computer, the device will act as a removable drive. Simply drag your files to the device.

The Main Menu

Your main menu consists of two screens. To slide back and forth between the two screens, touch the Arrow icon  with your finger/stylus, and slide it to the left. When on your second screen, you will touch the arrow icon, and slide your finger/stylus to the right.



Tapping an Icon will take you into the appropriate mode.





Music Mode

Your Music mode allows you to Play back all of your audio files, including songs, podcasts, audio books, etc.

Tech Note - This device will only support audio files in MP3, WMA, and WAV formats. If your audio files are not in one of these formats, they will NOT play on this device.

Tech Note – This device does NOT support DRM encrypted, or copy protected audio files. If you load those files to the device, they will NOT play, and generate an error message.

To begin playing a file, tap the icon in the center of the screen. Tap the same icon to pause the file. Tapping the right  or left  arrow icons on the screen will skip to the next or previous tracks. Pressing and holding the plus button (+) or minus button (-) to fast forward, or rewind the current track, respectively.



Icon Explanation (top to Bottom)



Battery Icon- This icon will display your battery charge. The more full this icon is, the more charge is left on the battery.



Equalizer- This icon will display your equalizer mode.



Repeat Mode- This icon will display your Repeat mode. In order, these are: Normal, Repeat One, Folder, Repeat Folder, Repeat All, and Random All. The icon displayed in the example here is for Repeat All.

Volume- This icon and number displays your volume level. Volume levels range from 0 (muted) to 40 (maximum). You adjust the volume using the + and – buttons on the top of the device.



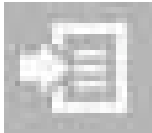
Back Icon- tapping this will return you to the main menu.



File Format- This icon displays the format your file is saved as. This will be located in a box, on the left hand side of the screen, immediately below the battery. This sample shows a file in .WAV format.

Bitrate- This Number will display the bitrate of the current file (in kbps)

Song counter – This icon displays how many files are in the current playmode, and which file you are on. For example, if this icon reads as 002/006, you are on the second of 6 files ready to play.



Menu Icon- Tapping this icon will take you into your Music submenu, or Music selection menu. If your audio file is PLAYING and you tap this icon, you will go to the Music Submenu. If your audio file is PAUSED and you tap this icon, you will go to the Music selection menu. Tapping the “M” button on the top of the device will do the same.



Progress bar- This bar at the bottom indicates the file progress. As your file plays, this will fill. The number at the beginning of the bar indicates at what point in the file you are, and the number at the end of the bar indicates the total file length. If your progress bar is not filling, then the file is not playing.


Music Submenu


The music submenu allows you to adjust your repeat mode, equalizer, and replay mode. This submenu is accessed by tapping the submenu icon or “M” button **while the file is playing**

Repeat Mode – This allows you to change how your music plays. Normal will play through each file one time, repeat one will play a single file over and over again, folder will play through all files in the current folder once, repeat folder will play through all files in the current folder over and over again, repeat all will play through all of your files over and over again, random all will play all files in random order.

Equalizer- This function allows you to change your audio levels, creating one of several audio effects. Your choices are natural, pop, rock, classical, soft, jazz, and bass

Replay Mode – This option allows you to set up an A-B replay function. This will allow you to set up the number of times your A-B section replays, and the gap in seconds between replays.

Select Relay option will enable A-B replay function, and A will flicker on the top of playing screen, press  button to select A point, then B will flicker on the top of

playing screen, press  again to select B point, then player will start to replay the section selected, as the number of times and gap already set. Press M button will exit A-B replay function.

Music Selection Submenu

The Music Selection Submenu allows you to browse through the folders saved on your device to select specific folders or files to play. This submenu is accessed by tapping the submenu icon or the “M” button in music mode **while the file is paused**.

Local Folder- Selecting this will take you to the root (base memory) and allow you to browse through your folders and files to select which file you would like to play. To enter a folder, simply tap it. If you accidentally go to the wrong folder, tap the backslash (\) at the top of the folder to exit that folder. To select a file to play, tap the file.

Delete File- This option deletes the current file.



Delete All- This option will delete all of the audio files on the device. Please note that this will delete only audio files, and not folders, images, videos, etc.



Video Mode

Your Video Mode allows you to play back your movies and videos.

Tech Note - This device will only support video files in AMV format at 160x128 resolution. If your video files are not in this format or at that resolution, they will NOT play on this device.

To begin playing a file, tap the icon in the center of the screen. Press Power button to pause the current file. Tapping the right  or left  arrow icons on the screen will skip to the next or previous tracks. Pressing and holding the plus button (+) or minus button (-) to fast forward, or rewind the current track, respectively.

Tapping the submenu icon or press the “M” button **while the file is paused** will take you into the video Submenu which has the same Local Folder, Delete File, Delete All, and Repeat modes as the Music submenus.

Please note that the Video Submenu is the only submenu for video mode. Selecting Delete File or Delete All will delete only the video files, not folders, audio files, pictures, etc.



Photo Mode

Photo mode allows you to view photos and pictures you have loaded to the device.

Tech Note- This player supports image files in JPG, BMP and GIF Formats. If your files are not in this format, then they will NOT display on this player.

Tech Note- The native resolution on this device is 160x128. Images larger than that will compress when they are displayed, leading to a loss of quality. Extremely large images may not display at all.

When you enter Photo mode, it will take you to a file selection screen which is identical to the “Local Folder” option in the Music and Video Modes. Simply tap a folder to enter it, and tap an image to view it.

When a file is displayed, you can slide the image to the next or previous screen by placing your finger/stylus on the right side of the screen and then sliding it to the left, or by placing your finger/stylus on the left side of the screen and then sliding it to the right.

Tap the power button to return to the Image selection screen.



Recorder

The Recorder mode will allow you to create voice recordings using the built in microphone, and play them back.

When you first enter Record mode, you will have the option to begin recording, or play back previous recordings.

Tech Note- The build in microphone on this device is designed to record audio from 1-5 feet away. Setting the device down to record a lecture across a room will not work well.

Recording

When you first enter Record mode, you will notice that it looks very similar to the Music Mode screen. There are however several differences.

You will notice a lack of repeat options, since you are recording audio, not playing it back. The folder item lists where the file is being saved and the file name is the name of the file you are recording.

Finally, you will notice the lack of a progress bar. In its place are two sets of numbers. On the left is the length of time of the current recording, and on the right is the total length of a recording you could make, which is based on the available memory. This number will decrease based on the number of files you have saved to the device, and the recording quality you set.

To begin recording, simply tap the icon in center of the screen. To pause the recording, tap the icon again. To save your recording, tap the back icon, which will save the recording and return you to the options of recording, and playing back a saved recording

Recording Playback

Your Recording playback mode acts identically to the Music Mode. Please refer to that section for operation instructions



eBook

The eBook mode allows you to view text files you have loaded on the player.

Tech Note- This device supports eBook files in TXT format only. If your files are not in TXT format, they will not display on this device.

When you enter eBook mode, it will take you to a file selection screen which is identical to the “Local Folder” option in the Music and Video Modes. Simply tap a folder to enter it, and tap an eBook to view it.

Once you have selected a file, and are reading it, there are several things you can do.

Pressing the + button will “turn the page” giving you the next page of text. You can also place your finger/stylus at the bottom of the screen and slide it up to advance to the next page

Pressing the – button will go back to the previous page of text. You can also place your finger/stylus at the top of the screen and slide it down to return to the previous page.

Pressing the “M” button will bring you to your eBook submenu where you can add, delete, or select a bookmark. You can also place your finger/stylus on the right side of your screen and slide it to the left.

Pressing the power button will return you to the file selection screen. You can also place your finger/stylus on the left and slide it to the right.

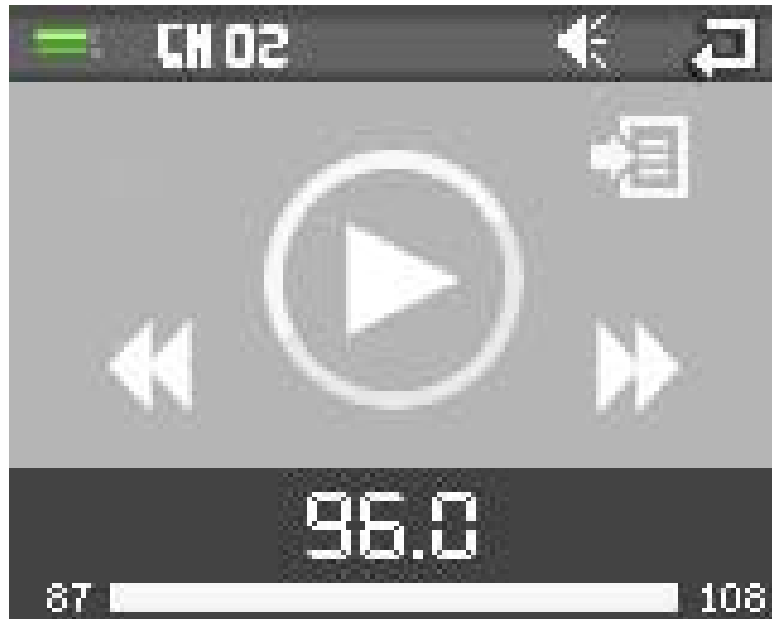




Radio

Your Eclipse comes equipped with an FM tuner, which allows you to tune in to your local radio stations.

Tech Note- Please make sure that you connect your headphones before entering Radio mode, as they will act as an antenna.

When you enter Radio mode, it takes you immediately to your radio playback screen



Your radio playback screen again looks similar to the music playback screen. The station you are tuned into is displayed in the middle of the screen, and your radio begins playing automatically. The icon in the middle of the screen has no function in radio mode, while tapping the right  or left  arrow icons on the screen will adjust your station frequency. Tapping the power button allows you to switch between preset stations. Pressing the “M” button will take you into your Radio submenu.

Radio Submenu

Your Radio Submenu allows you to set and delete station presets, switch reception bands and more.

Save- This item allows you to save your current station as a preset. You can have up to 30 presets saved.

Record- Selecting record will take you to your recording mode. Please refer to this section for instructions. Please note that this will record directly from the FM signal and not the microphone.

Delete- This option will delete the current radio preset. If you are not on a preset station, this has no function.

Delete All- This will delete all saved radio presets.

Auto Search- This will begin scanning through your stations, saving any with a strong enough signal as a preset. Please note that this WILL override any presets you have saved.

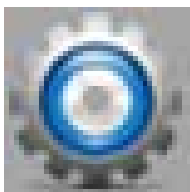
Normal Band – This is your standard FM band in the US. Stations range from 87 to 108.

Japan Band- This is the standard FM band in Japan and parts of Asia. Stations range from 76 to 90.



Browser

Your Browser mode is a more powerful version of your File selection screen in the Music, Video, Photo, and eBook modes. You can use the browser mode to navigate through your different folders and files. Selecting a file that is supported by the device will automatically open the file in the appropriate mode. For example if you select a song, it will immediately open the music mode and begin playing that file. If you selected a picture, photo mode would open and display the image.



Settings

Date/Time- This will allow you to adjust your date and time. Once you enter your Date and Time settings, tap the + button to highlight the year in blue. Use the blue up and down arrows on the right hand side of the screen to increase or decrease the value. Once your year is set appropriately, tap the + button again to move on to the month, and again use the blue arrows to adjust the value. Continue doing this with the day, hour, minute, and seconds. Once you are done, tap the “M” button to save the changes and return to settings.

Auto Dim- This is a power savings feature which will power down the screen if the touchscreen and buttons are not in use. You can adjust this item in 5 second

increments from 0 to 50 seconds. Setting this to 0 will keep your screen on all the time, but we do not recommend this, as it will cause your battery to drain faster.

Language- This device will display characters in over a dozen languages. If you accidentally change your language, return to the main menu, and select the settings icon (shown above), and then select the 3rd option from the top. At that point simply scroll through your options until you find the language you want. Each language is written in its respective characters.

Auto Off- This power savings setting allows you to set an auto power off timer, and a sleep mode which will power the device down if the device is inactive for the set period of time.

Memory Info- This screen will display the percentage of used memory and the total available memory.

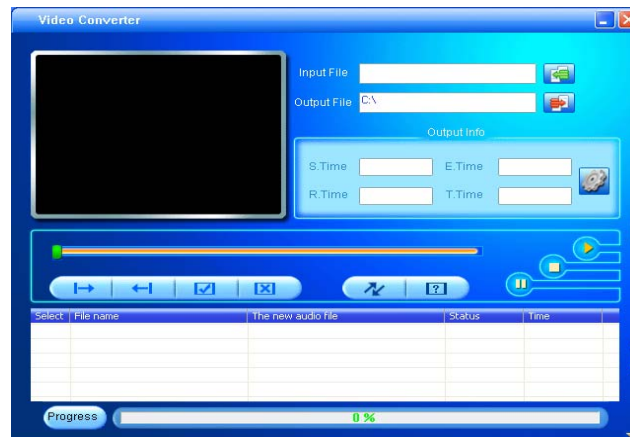
Firmware version- This will display information on the firmware of the device.




Video Conversion

If your video files will not play on your Eclipse T180 player, you can convert them using the conversion tool which is included with the device. To do so, you will need to first install the software.

When you connect the player to your computer, it will act as a removable disk drive. Open the drive, as described in the Copy and Paste section of the manual. Inside, there is a folder called "Tools & Manual". Open this folder, and then the "Tools" folder. Inside is a Setup.exe application. Run this file and follow the onscreen instructions. Please note that depending on your OS version and security settings you may need to right click on the file and select "run as administrator"

Once installed, you will have an item called "Media Player Utilities" in your programs list. Select this item and then "Video Converter", or "AMV Converter".



Once the conversion tool is open, the first step in actually converting and loading the file is to select the file you wish to convert. Locate the “Input File” line towards the top of the window, and select the “Add file” button  and use the file selection window to select the file you want to convert and load. The second step is to select the location you want the converted file saved. Locate the “Output File” line immediately below the “Input File” line and select the “Video Path” button  and use the “browse for folder” window to select the save location. As this conversion tool is already calibrated to convert your files for optimal quality, you simply need to select the “Begin” button  and the player will convert the file for you.

Please note that if the player is connected to your computer when you open this tool, you will see an additional window to the right of the main window. This is the media player window.

Please note that the window will display the drive letter assigned to your player; if you have multiple players connected, it will have an option for each drive. Below the drive letters is a pie chart showing the amount of storage space available and the amount used. There is also a check box giving you the option to automatically copy the video file to your drive. Selecting this will save you a step in loading your video files, as the converter will save a copy of the converted file to your computer, and then automatically load it on to the player as well!

Once the file has finished converting and loading on to your player, follow the “Safely Remove Hardware” instructions outlined above, and enjoy your video.

If you receive an error when attempting to convert a video file, then you likely lack the proper video codecs on your computer. There are several large codec packs which will contain the majority of the common video codecs, such as the K-Lite Mega codec pack, and the Storm codec pack. We recommend downloading them from a trusted source and installing them and attempting to convert the files then.

Limited Manufacturer's Warranty

1. MACH SPEED products carry a one year from date of purchase warranty. This warranty is nontransferable.
2. Mach-Speed Technologies warrants to the original registered end-user purchaser that Mach Speed products will be free from defects in materials and workmanship for one year from the date of new purchase. During the warranty period and upon proof of purchase the product will be repaired or replaced (with the same or a similar model, which may be a refurbished model) at Mach Speed Technologies option, without charge for either parts or labor. This warranty shall not apply if the product is modified, tampered with, misused, physically damaged, or subjected to abnormal working conditions (including, but not limited to, electrical, fire, and water damage).

THIS WARRANTY DOES NOT GUARANTEE YOU UNINTERRUPTED SERVICE. REPAIR OR REPLACEMENT AS PROVIDED UNDER THIS LIMITED WARRANTY IS THE EXCLUSIVE REMEDY OF THE PURCHASER.

To obtain service under this warranty, you must contact our Technical department at (580) 272-0035 to obtain an RMA number. Mach Speed Technologies will only replace or repair product that is sent to us with an authorized RMA number.

Return Merchandise Authorization (RMA):

1. Customers will be charged additional for testing and repackaging when returned "bad" items are found to have no problems or defects.
2. Items found to be out-of-warranty or not belonging to Mach Speed Technologies will not be replaced. Instead, they will be returned back to the customer freight-collect.
3. RMA's will be shipped back to customer via UPS ground delivery. Express shipping will be at additional costs to the customer.
4. All RMA's must be accompanied with a copy of original receipt or invoice with name, return address and phone number of customer.

Exchanges:

1. Items will not be cross-shipped for any reason.
2. A copy of the original receipt or invoice must accompany all exchanges.
3. All exchanges must be shipped freight pre-paid by the customer and include a pre-paid shipping label for shipment back to the customer. Furthermore, the

customer is expected to insure all items being shipped back. Mach Speed Technologies is not responsible for any losses or damages for such equipment.

4. All sales are final. Mach Speed Technologies will not accept any returns for credit or refund.

Discrepancy & Shipping Damage:

1. For wrong items, missing items, shipping damage, or other discrepancy; customer should report to RMA department on the day in which the items were received. Any claims after one business day of receipt will not be honored.
2. For any shipping damage, customer must file a claim with their carrier immediately. All items are shipped insured, thus must be reported for coverage.
3. Customer is responsible for paying any freight charge caused by refused shipment or unclaimed goods.
4. Mach Speed Technologies will make every reasonable effort to deliver on time however; Mach Speed Technologies will not be liable for late or lost shipments.

Consequential Damages and Limitations:

1. Mach Speed Technologies shall not be liable for any failure to perform or delay in performing any of its obligations when such failure or delay is due to circumstances beyond its reasonable control, including, without limitation, any act of God, war, strike, riot, fire, flood, earthquake, lock-out, late or non-delivery by suppliers, shortage or unavailability of materials, components or transportation facilities, or any act, refusal to act, regulation, order or intervention of any governmental authority.
2. Under no circumstances shall Mach Speed Technologies be liable for any special, indirect, incidental or consequential damages of any kind or nature whatsoever, including, without limitation; lost goodwill, lost resale profits, loss of data or software, work stoppage or impairment of other goods, and whether arising out of breach of any express or implied warranty, breach of contract, tort (including negligence), strict product liability or otherwise, even if advised of the possibility of such damage or if such damage could have been reasonably foreseen.

If at any point, you have questions about your player or experience an issue with your player, please feel free to contact our technicians at mssupport@machspeed.com or by phone at 580- 272- 0035.