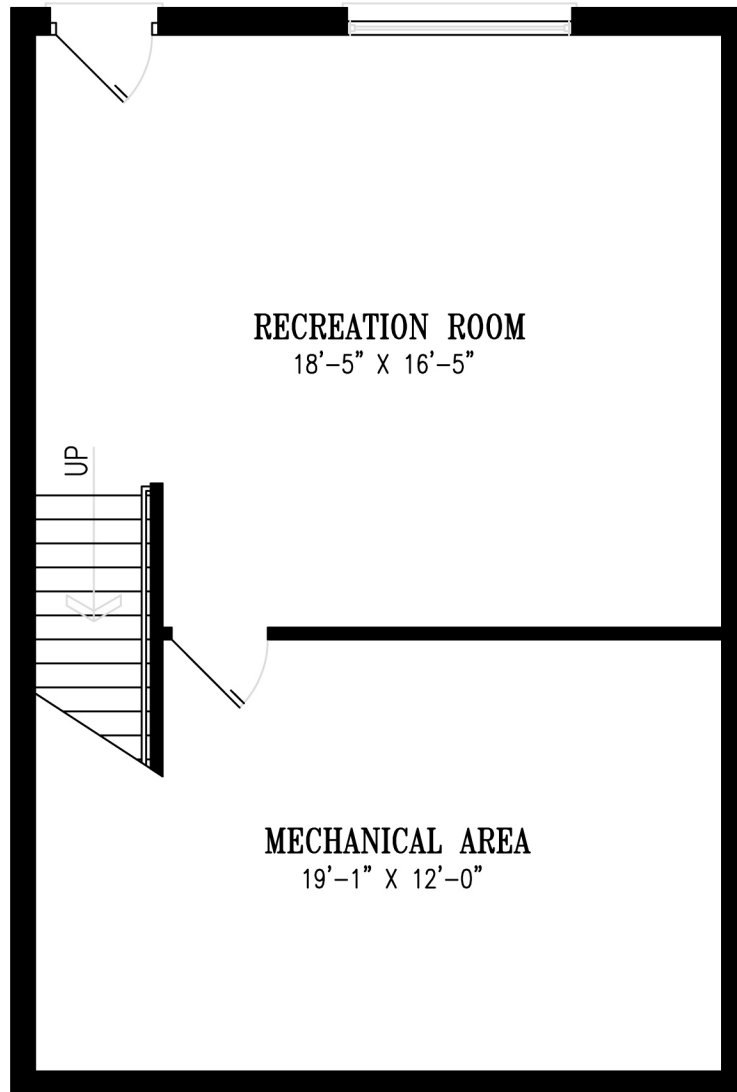


# CHERRY TREE MEWS

---

■ 310 WESTMINSTER AVENUE LONDON ■



## LOWER LEVEL

### THREE BEDROOM (CARPORT)

300 sq.ft. Interior Living Space (Lower Level)

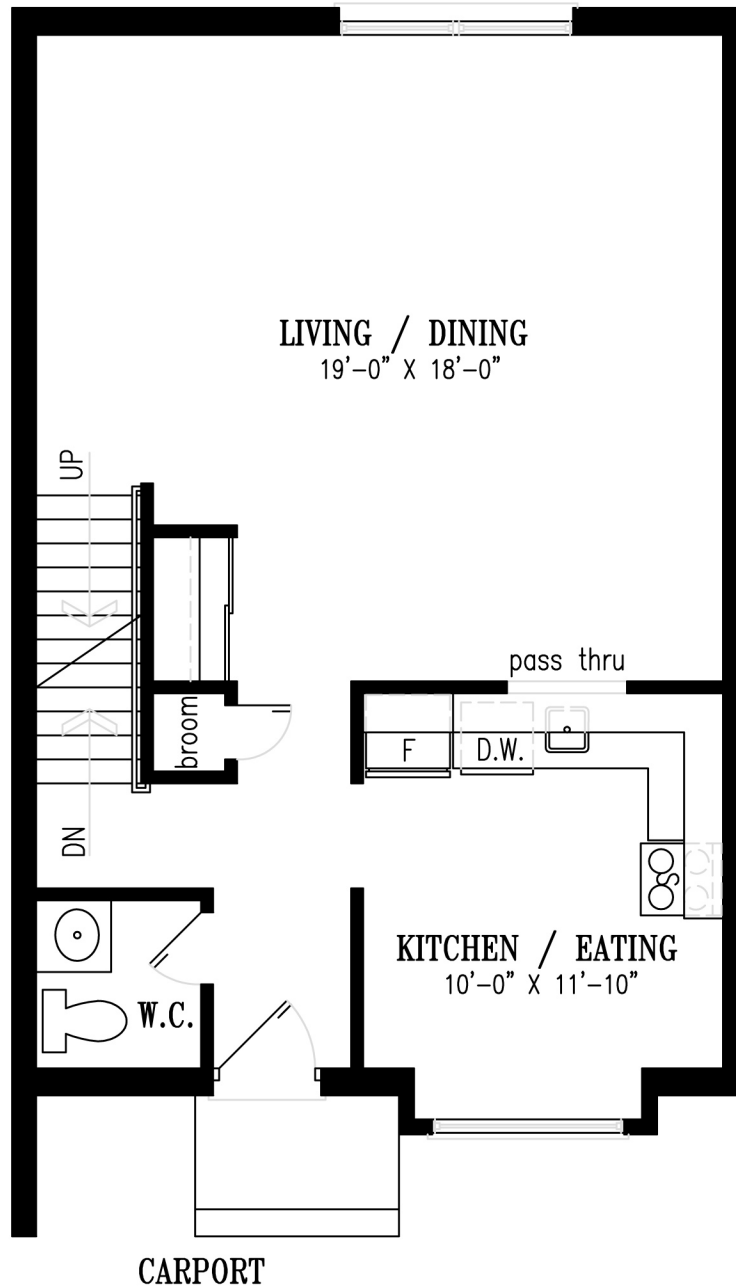
1430 sq.ft. Interior Living Space (Total)

Professionally Managed By

**NORQUAY**  
PROPERTY MANAGEMENT LTD

# CHERRY TREE MEWS

■ 310 WESTMINSTER AVENUE LONDON ■



## MAIN LEVEL

### THREE BEDROOM (CARPORT)

555 sq.ft. Interior Living Space (Main Level)

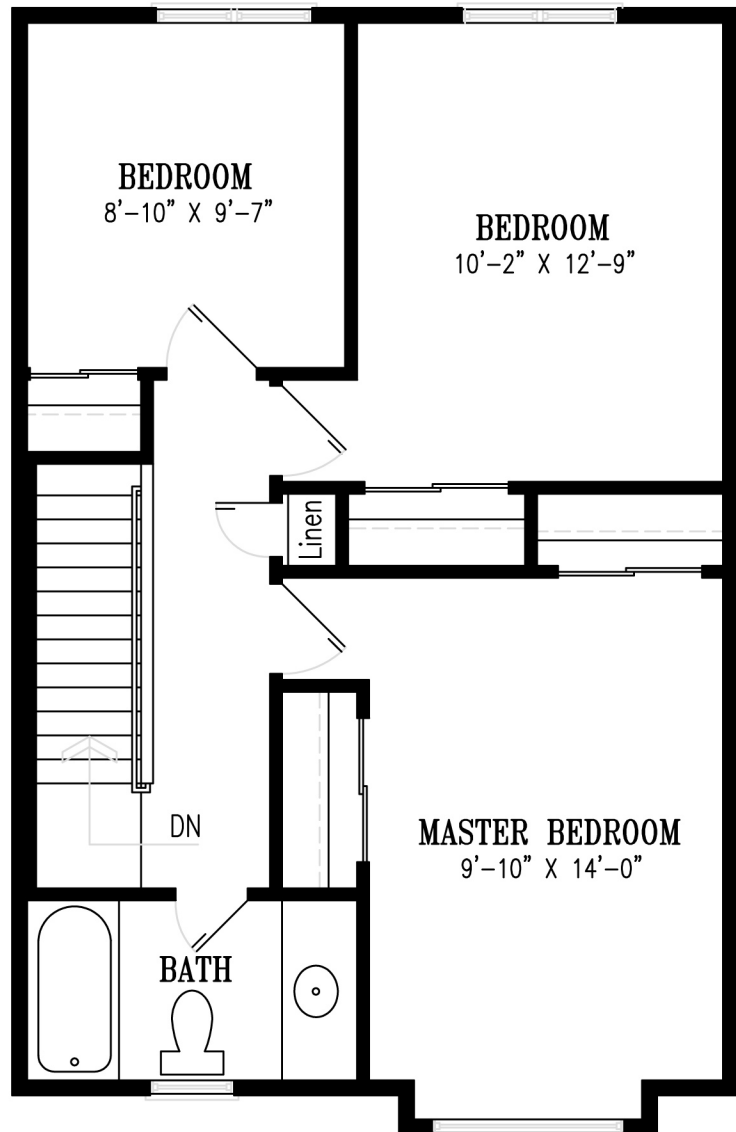
1430 sq.ft. Interior Living Space (Total)

Professionally Managed By

**NORQUAY**  
PROPERTY MANAGEMENT LTD

# CHERRY TREE MEWS

■ 310 WESTMINSTER AVENUE LONDON ■



## UPPER LEVEL

### THREE BEDROOM (CARPORT)

575 sq.ft. Interior Living Space (Upper Level)

1430 sq.ft. Interior Living Space (Total)

Professionally Managed By

**NORQUAY**  
PROPERTY MANAGEMENT LTD