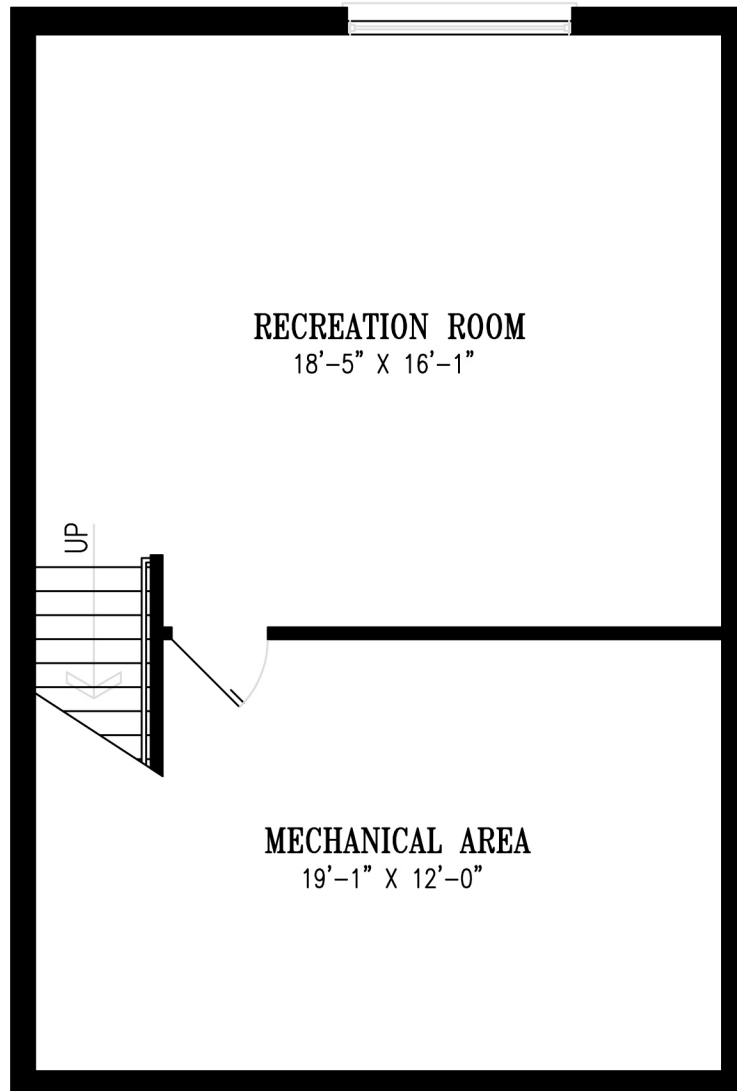


CHERRY TREE MEWS

■ 310 WESTMINSTER AVENUE LONDON ■



LOWER LEVEL

THREE BEDROOM

300 sq.ft. Interior Living Space (Lower Level)

1430 sq.ft. Interior Living Space (Total)

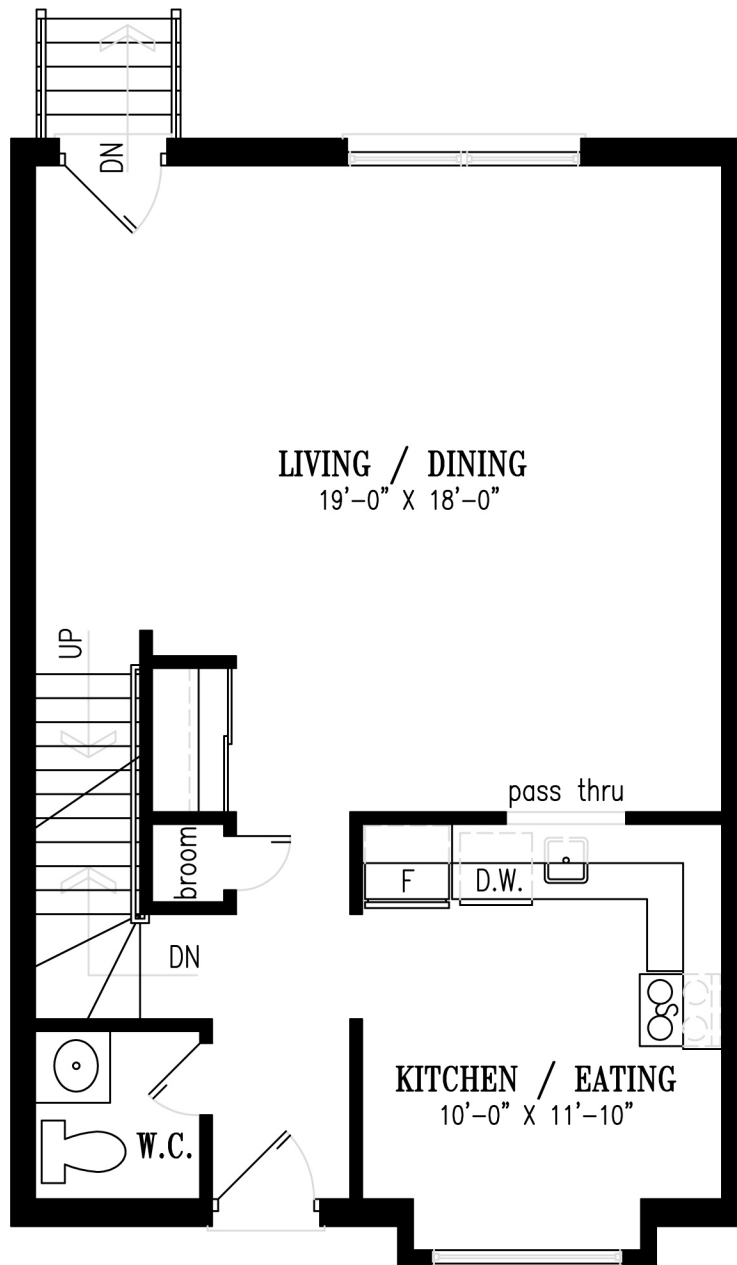
Professionally Managed By

NORQUAY
PROPERTY MANAGEMENT LTD

Dimensions and square footage are approximate and may vary from unit to unit

CHERRY TREE MEWS

■ 310 WESTMINSTER AVENUE LONDON ■



MAIN LEVEL

THREE BEDROOM

555 sq.ft. Interior Living Space (Main Level)

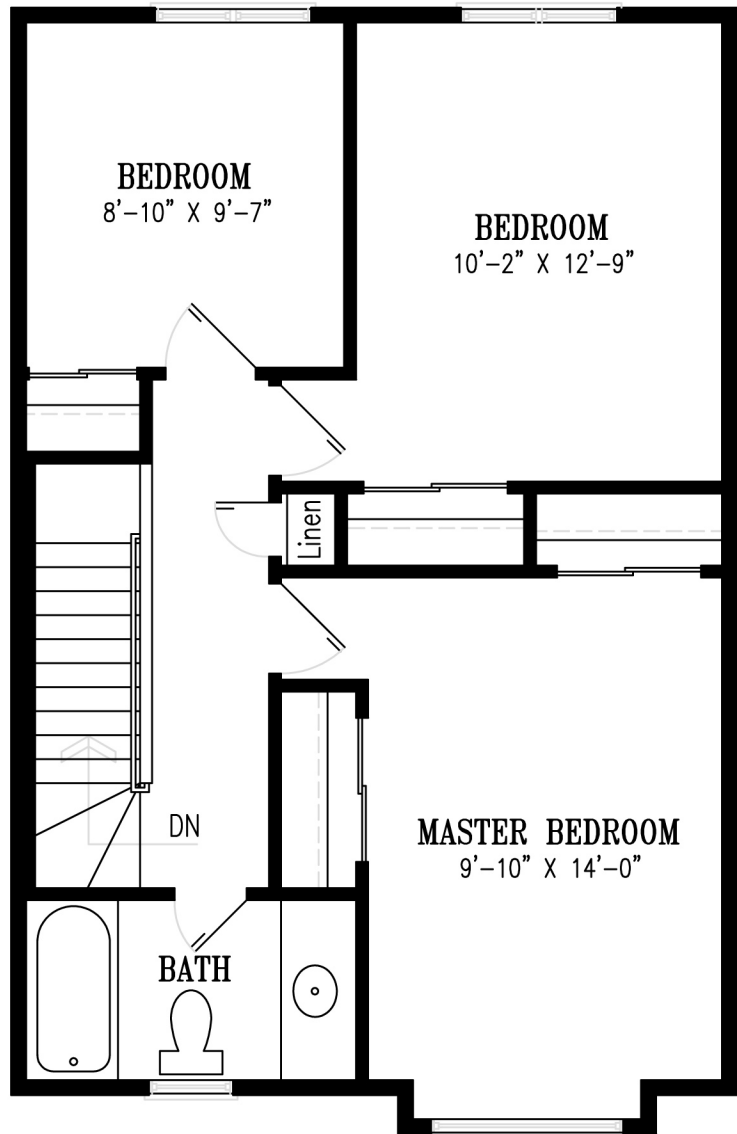
1430 sq.ft. Interior Living Space (Total)

Professionally Managed By

NORQUAY
PROPERTY MANAGEMENT LTD

CHERRY TREE MEWS

■ 310 WESTMINSTER AVENUE LONDON ■



UPPER LEVEL

THREE BEDROOM

575 sq.ft. Interior Living Space (Upper Level)
1430 sq.ft. Interior Living Space (Total)

Professionally Managed By

NORQUAY
PROPERTY MANAGEMENT LTD

Dimensions and square footage are approximate and may vary from unit to unit