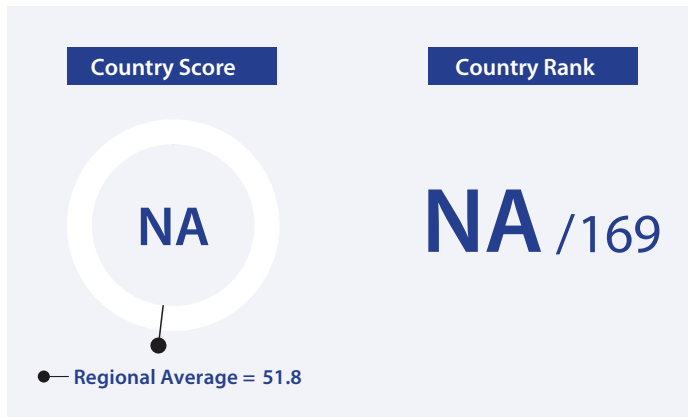
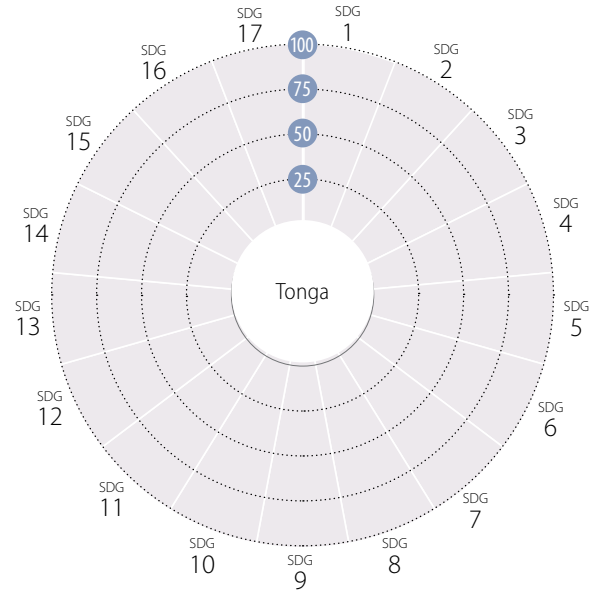


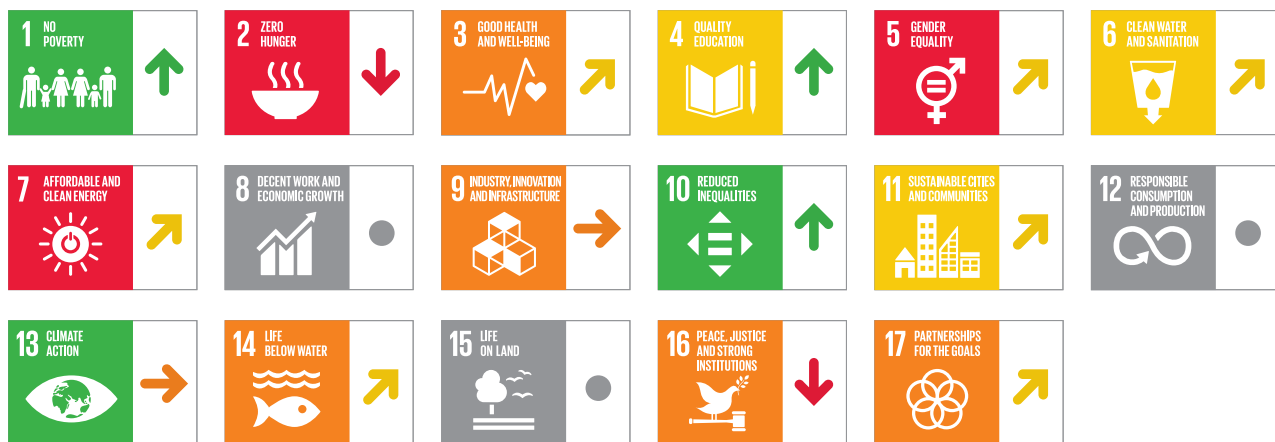
Overall Performance



Average Performance by SDG

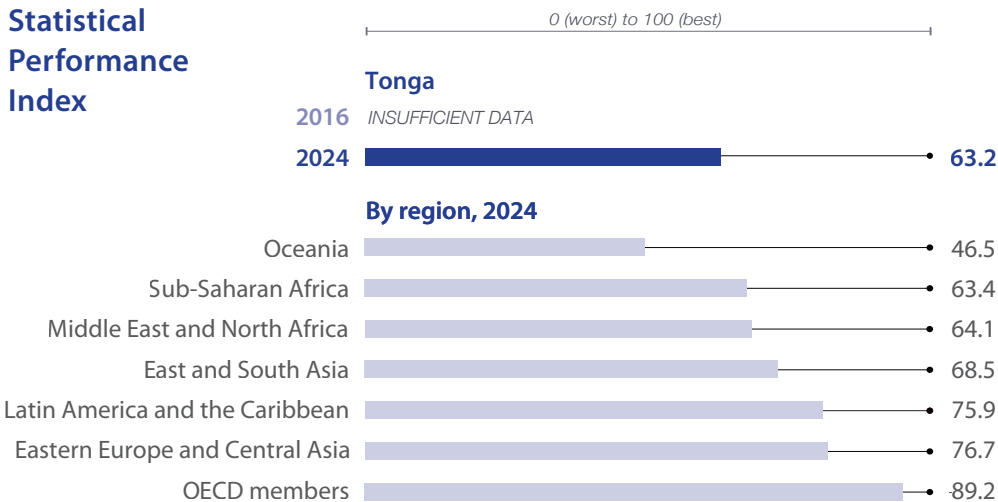


SDG Dashboard and Trends



■ Major challenges
 ■ Significant challenges
 ■ Challenges remain
 ■ SDG achieved
 ■ Information unavailable
↓ Decreasing
 → Stagnating
 ↗ Moderately improving
 ↑ On track or maintaining SDG achievement
 ● Information unavailable

Statistical Performance Index



Number of Voluntary National Reviews (VNRs)



*Progress (in percentage points) is based on a set of 17 headline SDG indicators. Please see the methodology section for details.

SDG1 – No Poverty	Value	Year	Rating	Trend	SDG9 – Industry, Innovation and Infrastructure	Value	Year	Rating	Trend
Poverty headcount ratio at \$3.00/day (%)	0.5	2026	●	↑	Rural population with access to all-season roads (%)	99.2	2026	●	→
Poverty headcount ratio at \$4.20/day (%)	1.3	2026	●	↑	Population using the internet (%)	67.4	2024	●	↑
SDG2 – Zero Hunger					SDG10 – Reduced Inequalities				
Prevalence of undernourishment (%)	NA	NA	●	●	Gini coefficient	27.1	2021	●	↑
Prevalence of stunting in children under 5 years of age (%)	2.2	2019	●	●	Palma ratio	1.0	2021	●	↑
Prevalence of wasting in children under 5 years of age (%)	1.1	2019	●	●	SDG11 – Sustainable Cities and Communities				
Minimum dietary diversity among children aged 6–23 months (%)	53.5	2019	●	●	Proportion of urban population living in slums (%)	0.3	2022	●	●
Prevalence of obesity, BMI ≥ 30 (% of adult population)	71.7	2022	●	↓	Annual mean concentration of PM2.5 (µg/m³)	4.1	2023	●	↑
Human Trophic Level (best 2–3 worst)	2.3	2023	●	●	Access to improved water source, piped (% of urban population)	96.8	2024	●	→
Cereal yield (tonnes per hectare of harvested land)	NA	NA	●	●	Population with convenient access to public transport in cities (%)	NA	NA	●	●
Progress towards productive and sustainable agriculture (worst 1–5 best)	2.1	2024	●	→	SDG12 – Responsible Consumption and Production				
Exports of hazardous pesticides (tonnes per million population)	NA	NA	●	●	Municipal solid waste (kg/capita/day)	0.2	2022	●	●
SDG3 – Good Health and Well-Being					SDG13 – Climate Action				
Maternal mortality ratio (per 100,000 live births)	66.8	2023	●	↑	CO ₂ emissions from fossil fuel combustion and cement production (tCO ₂ /capita)	1.5	2024	●	→
Neonatal mortality rate (per 1,000 live births)	4.1	2024	●	↑	GHG emissions embodied in imports (tCO _{2e} /capita)	NA	NA	●	●
Mortality rate, under-5 (per 1,000 live births)	9.5	2024	●	↑	CO ₂ emissions embodied in fossil fuel exports (tonnes/capita)	0.0	2019	●	●
Incidence of tuberculosis (per 100,000 population)	1.9	2024	●	↑	SDG14 – Life Below Water				
New HIV infections (per 1,000 uninfected population, all ages)	NA	NA	●	●	Mean area that is protected in marine sites important to biodiversity (%)	17.6	2025	●	→
Age-standardized death rate due to cardiovascular disease, cancer, diabetes, or chronic respiratory disease in adults aged 30 to 70 (%)	26.9	2021	●	↓	Ocean Health Index: Clean Waters score (worst 0–100 best)	86.9	2025	●	↑
Age-standardized death rate due to air pollution (per 100,000 population)	85.9	2023	●	→	Fish caught from overexploited or collapsed stocks (% of total catch)	0.7	2018	●	↑
Traffic deaths (per 100,000 population)	8.5	2021	●	→	Fish caught by trawling or dredging (%)	0.0	2019	●	●
Life expectancy at birth (years)	73.2	2025	●	→	Fish caught that are then discarded (%)	0.0	2009	●	●
Adolescent fertility rate (births per 1,000 females aged 15 to 19)	30.0	2017	●	●	Marine biodiversity threats embodied in imports (per million population)	NA	NA	●	●
Births attended by skilled health personnel (%)	98.3	2019	●	●	SDG15 – Life on Land				
Surviving infants who received 2 WHO-recommended vaccines (%)	99	2024	●	↑	Mean area that is protected in terrestrial sites important to biodiversity (%)	26.1	2025	●	→
Universal health coverage (UHC) index of service coverage (worst 0–100 best)	71	2023	●	→	Mean area that is protected in freshwater sites important to biodiversity (%)	NA	NA	●	●
Subjective well-being (average ladder score, worst 0–10 best)	NA	NA	●	●	Red List Index of species survival (worst 0–1 best)	0.8	2025	●	↓
SDG4 – Quality Education					SDG16 – Peace, Justice and Strong Institutions				
Participation rate in pre-primary organized learning (% of children aged 4 to 6)	77.7	2024	●	●	Homicides (per 100,000 population)	1.0	2019	●	●
Net primary enrollment rate (%)	98.1	2023	●	↑	Crime is effectively controlled (worst 0–1 best)	NA	NA	●	●
Lower secondary completion rate (%)	99.4	2024	●	●	Unsentenced detainees (% of prison population)	33.0	2022	●	↓
Literacy rate (% of population aged 15 to 24)	99.7	2023	●	↑	Birth registrations with civil authority (% of children under age 5)	97.7	2019	●	●
SDG5 – Gender Equality					SDG17 – Partnerships for the Goals				
Demand for family planning satisfied by modern methods (% of females aged 15 to 49)	50.2	2025	●	→	Corruption Perceptions Index (worst 0–100 best)	NA	NA	●	●
Ratio of female-to-male mean years of education received (%)	101.4	2023	●	↑	Children involved in child labor (%)	26.1	2019	●	●
Ratio of female-to-male labor force participation rate (%)	71.8	2025	●	↑	Exports of major conventional weapons (TIV per 100,000 population) *	0.0	2025	●	●
Seats held by women in national parliament (%)	3.9	2026	●	→	Press Freedom Index (worst 0–100 best)	66.6	2026	●	↓
SDG6 – Clean Water and Sanitation					SDG8 – Decent Work and Economic Growth				
Population using at least basic drinking water services (%)	98.9	2024	●	↑	Adjusted GDP growth index (worst 0–100 best)	53.4	2023	●	●
Population using at least basic sanitation services (%)	93.9	2024	●	↗	Victims of modern slavery (per 1,000 population)	NA	NA	●	●
Freshwater withdrawal (% of available freshwater resources)	NA	NA	●	●	Adults with an account at a bank or other financial institution or with a mobile-money-service provider (%)	NA	NA	●	●
Anthropogenic wastewater that receives treatment (%)	27.6	2015	●	●	Unemployment rate (% of total labor force, ages 15+)	2.0	2026	●	→
Scarce water consumption embodied in imports (m ³ H ₂ O eq/capita)	NA	NA	●	●	Fundamental labor rights are effectively guaranteed (worst 0–1 best)	NA	NA	●	●
SDG7 – Affordable and Clean Energy					SDG9 – Industry, Innovation and Infrastructure				
Population with access to electricity (%)	100.0	2023	●	↑	Times Higher Education world rankings: average score of top 3 universities (worst 0–100 best) *	0.0	2026	●	●
Population with access to clean fuels and technology for cooking (%)	90.1	2023	●	↑	Articles published in academic journals (per 1,000 population)	0.2	2024	●	→
CO ₂ emissions from fuel combustion per total electricity output (MtCO ₂ /TWh)	2.1	2024	●	→	Expenditure on research and development (% of GDP)	NA	NA	●	●
Renewable energy share in total final energy consumption (%)	1.4	2022	●	→	Total patent applications by applicant's origin (per million population)	46.2	2024	●	→
SDG8 – Decent Work and Economic Growth					SDG9 – Industry, Innovation and Infrastructure				
Adjusted GDP growth index (worst 0–100 best)	53.4	2023	●	●	E-government: Online Services Index (worst 0–1 best)	0.3	2024	●	↓
Victims of modern slavery (per 1,000 population)	NA	NA	●	●	SDG10 – Reduced Inequalities				
Adults with an account at a bank or other financial institution or with a mobile-money-service provider (%)	NA	NA	●	●	Gini coefficient	27.1	2021	●	↑
Unemployment rate (% of total labor force, ages 15+)	2.0	2026	●	→	Palma ratio	1.0	2021	●	↑
Fundamental labor rights are effectively guaranteed (worst 0–1 best)	NA	NA	●	●	SDG11 – Sustainable Cities and Communities				
SDG9 – Industry, Innovation and Infrastructure					SDG12 – Responsible Consumption and Production				
Government spending on health and education (% of GDP)	8.7	2023	●	↑	Production-based air pollution (DALYs per 1,000 population)	NA	NA	●	●
For high-income and all OECD DAC countries: International concessional public finance, including official development assistance (% of GNI)	**	**	**	**	Air pollution associated with imports (DALYs per 1,000 population)	NA	NA	●	●
Other countries: Government revenue excluding grants (% of GDP)	22.6	2023	●	→	Production-based nitrogen emissions (kg/capita)	NA	NA	●	●
Corporate Tax Haven Score (best 0–100 worst) *	0	2025	●	●	Nitrogen emissions associated with imports (kg/capita)	NA	NA	●	●
Shifted profits of multinationals (US\$ billion) *	0.0	2022	●	●	Exports of plastic waste (kg/capita)	NA	NA	●	●
Statistical Performance Index (worst 0–100 best)	63.2	2024	●	●	SDG13 – Climate Action				
Index of countries' support to UN-based multilateralism (worst 0–100 best)	61.9	2026	●	↑	CO ₂ emissions from fossil fuel combustion and cement production (tCO ₂ /capita)	1.5	2024	●	→
SDG10 – Reduced Inequalities					SDG14 – Life Below Water				
Gini coefficient	27.1	2021	●	↑	GHG emissions embodied in imports (tCO _{2e} /capita)	NA	NA	●	●
Palma ratio	1.0	2021	●	↑	CO ₂ emissions embodied in fossil fuel exports (tonnes/capita)	0.0	2019	●	●
SDG11 – Sustainable Cities and Communities					SDG15 – Life on Land				
Proportion of urban population living in slums (%)	0.3	2022	●	●	Mean area that is protected in terrestrial sites important to biodiversity (%)	26.1	2025	●	→
Annual mean concentration of PM2.5 (µg/m³)	4.1	2023	●	↑	Mean area that is protected in freshwater sites important to biodiversity (%)	NA	NA	●	●
Access to improved water source, piped (% of urban population)	96.8	2024	●	→	Red List Index of species survival (worst 0–1 best)	0.8	2025	●	↓
Population with convenient access to public transport in cities (%)	NA	NA	●	●	Permanent deforestation (% of forest area, 3-year average)	NA	NA	●	●
SDG12 – Responsible Consumption and Production					SDG16 – Peace, Justice and Strong Institutions				
Municipal solid waste (kg/capita/day)	0.2	2022	●	●	Imported deforestation (m ² /capita)	NA	NA	●	●
Electronic waste that is not recycled (kg/capita)	4.0	2022	●	●	SDG17 – Partnerships for the Goals				
Production-based air pollution (DALYs per 1,000 population)	NA	NA	●	●	Government spending on health and education (% of GDP)	8.7	2023	●	↑
Air pollution associated with imports (DALYs per 1,000 population)	NA	NA	●	●	For high-income and all OECD DAC countries: International concessional public finance, including official development assistance (% of GNI)	**	**	**	**
Production-based nitrogen emissions (kg/capita)	NA	NA	●	●	Other countries: Government revenue excluding grants (% of GDP)	22.6	2023	●	→
Nitrogen emissions associated with imports (kg/capita)	NA	NA	●	●	Corporate Tax Haven Score (best 0–100 worst) *	0	2025	●	●
Exports of plastic waste (kg/capita)	NA	NA	●	●	Shifted profits of multinationals (US\$ billion) *	0.0	2022	●	●
SDG13 – Climate Action					SDG17 – Partnerships for the Goals				
CO ₂ emissions from fossil fuel combustion and cement production (tCO ₂ /capita)	1.5	2024	●	→	Statistical Performance Index (worst 0–100 best)	63.2	2024	●	●
GHG emissions embodied in imports (tCO _{2e} /capita)	NA	NA	●	●	Index of countries' support to UN-based multilateralism (worst 0–100 best)	61.9	2026	●	↑
CO ₂ emissions embodied in fossil fuel exports (tonnes/capita)	0.0	2019	●	●	SDG9 – Industry, Innovation and Infrastructure				
SDG14 – Life Below Water					SDG10 – Reduced Inequalities				
Mean area that is protected in marine sites important to biodiversity (%)	17.6	2025	●	→	Gini coefficient	27.1	2021	●	↑
Ocean Health Index: Clean Waters score (worst 0–100 best)	86.9	2025	●	↑	Palma ratio	1.0	2021	●	↑
Fish caught from overexploited or collapsed stocks (% of total catch)	0.7	2018	●	↑	SDG11 – Sustainable Cities and Communities				
Fish caught by trawling or dredging (%)	0.0	2019	●	●	Proportion of urban population living in slums (%)	0.3	2022	●	●
Fish caught that are then discarded (%)	0.0	2009	●	●	Annual mean concentration of PM2.5 (µg/m³)	4.1	2023	●	↑
Marine biodiversity threats embodied in imports (per million population)	NA	NA	●	●	Access to improved water source, piped (% of urban population)	96.8	2024	●	→
SDG15 – Life on Land					SDG12 – Responsible Consumption and Production				
Mean area that is protected in terrestrial sites important to biodiversity (%)	26.1	2025	●	→	Municipal solid waste (kg/capita/day)	0.2	2022	●	●
Mean area that is protected in freshwater sites important to biodiversity (%)	NA	NA	●	●	Electronic waste that is not recycled (kg/capita)	4.0	2022	●	●
Red List Index of species survival (worst 0–1 best)	0.8	2025	●	↓	Production-based air pollution (DALYs per 1,000 population)	NA	NA	●	●
Permanent deforestation (% of forest area, 3-year average)	NA	NA	●	●	Air pollution associated with imports (DALYs per 1,000 population)	NA	NA	●	●
Imported deforestation (m ² /capita)	NA	NA	●	●	Production-based nitrogen emissions (kg/capita)	NA	NA	●	●
SDG16 – Peace, Justice and Strong Institutions					SDG13 – Climate Action				
Homicides (per 100,000 population)	1.0	2019	●	●	CO ₂ emissions from fossil fuel combustion and cement production (tCO ₂ /capita)	1.5	2024	●	→
Crime is effectively controlled (worst 0–1 best)	NA	NA	●	●	GHG emissions embodied in imports (tCO _{2e} /capita)	NA	NA	●	●
Unsentenced detainees (% of prison population)	33.0	2022	●	↓	CO ₂ emissions embodied in fossil fuel exports (tonnes/capita)	0.0	2019	●	●
Birth registrations with civil authority (% of children under age 5)	97.7	2019	●	●	SDG14 – Life Below Water				
Corruption Perceptions Index (worst 0–100 best)	NA	NA	●	●	Mean area that is protected in marine sites important to biodiversity (%)	17.6	2025	●	→
Children involved in child labor (%)	26.1	2019	●	●	Ocean Health Index: Clean Waters score (worst 0–100 best)	86.9	2025	●	↑
Exports of major conventional weapons (TIV per 100,000 population) *	0.0	2025	●	●	Fish caught from overexploited or collapsed stocks (% of total catch)	0.7	2018	●	↑
Press Freedom Index (worst 0–100 best)	66.6	2026	●	↓	Fish caught by trawling or dredging (%)	0.0	2019	●	●
Access to and affordability of justice (worst 0–1 best)	NA	NA	●	●	Fish caught that are then discarded (%)	0.0	2009	●	●
Timeliness of administrative proceedings (worst 0–1 best)	NA	NA	●	●	Marine biodiversity threats embodied in imports (per million population)	NA	NA	●	●
Expropriations are lawful and adequately compensated (worst 0–1 best)	NA	NA	●	●	SDG15 – Life on Land				
SDG17 – Partnerships for the Goals					SDG16 – Peace, Justice and Strong Institutions				
Government spending on health and education (% of GDP)	8.7	2023	●	↑	Homicides (per 100,000 population)	1.0	2019	●	●
For high-income and all OECD DAC countries: International concessional public finance, including official development assistance (% of GNI)	**	**	**	**	Crime is effectively controlled (worst 0–1 best)	NA	NA	●	●
Other countries: Government revenue excluding grants (% of GDP)	22.6	2023	●	→	Unsentenced detainees (% of prison population)	33.0	2022	●	↓
Corporate Tax Haven Score (best 0–100 worst) *	0	2025	●	●	Birth registrations with civil authority (% of children under age 5)	97.7	2019	●	●
Shifted profits of multinationals (US\$ billion) *	0.0	2022	●	●	Corruption Perceptions Index (worst 0–100 best)	NA	NA	●	●
Statistical Performance Index (worst 0–100 best)	63.2	2024	●	●	Children involved in child labor (%)	26.1	2019	●	●
Index of countries' support to UN-based multilateralism (worst 0–100 best)	61.9	2026	●	↑	Exports of major conventional weapons (TIV per 100,000 population) *	0.0	2025	●	●

* Imputed data point, ** Not applicable
NA = Data not available