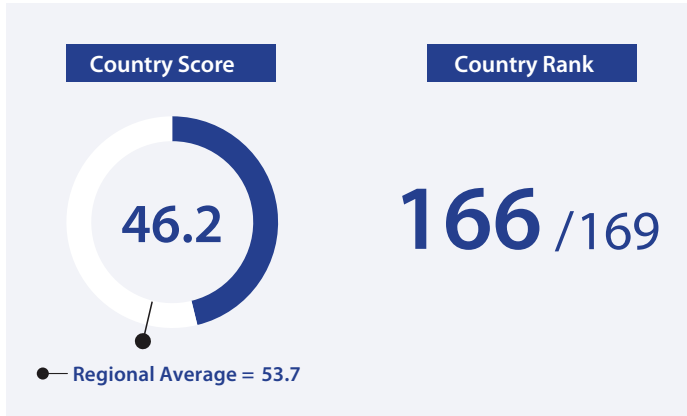
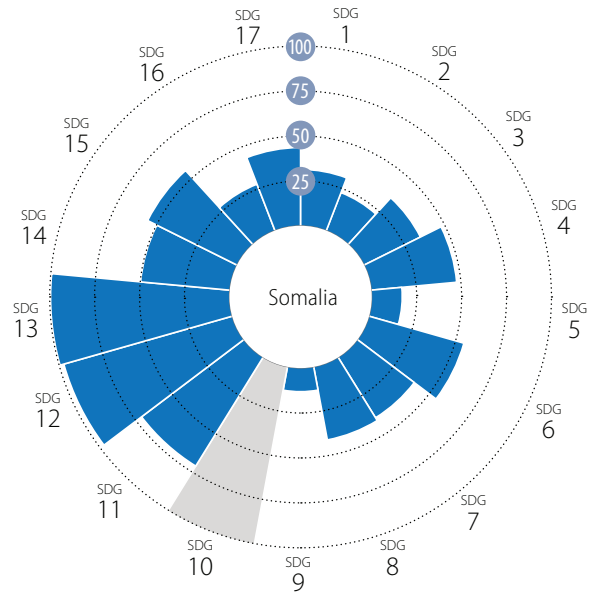


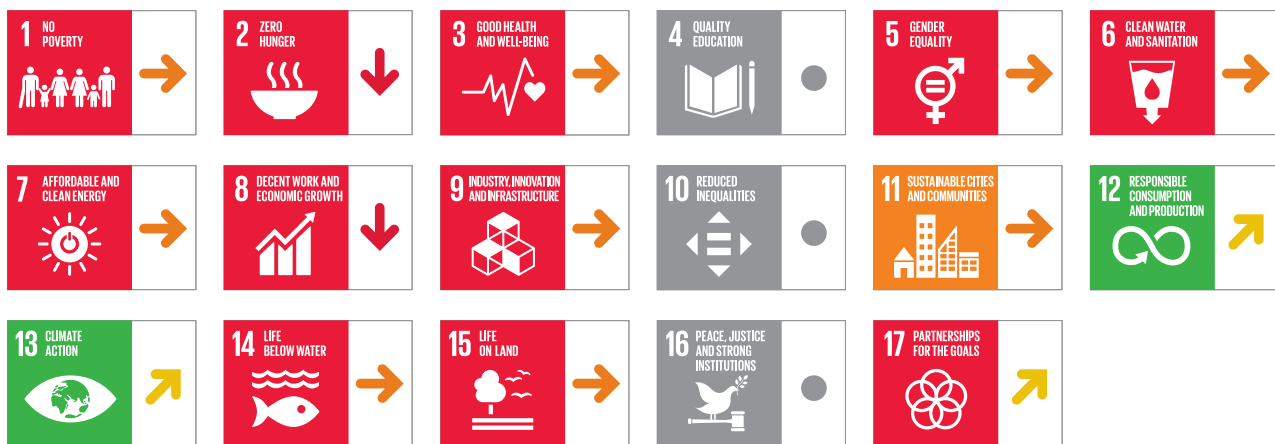
Overall Performance



Average Performance by SDG

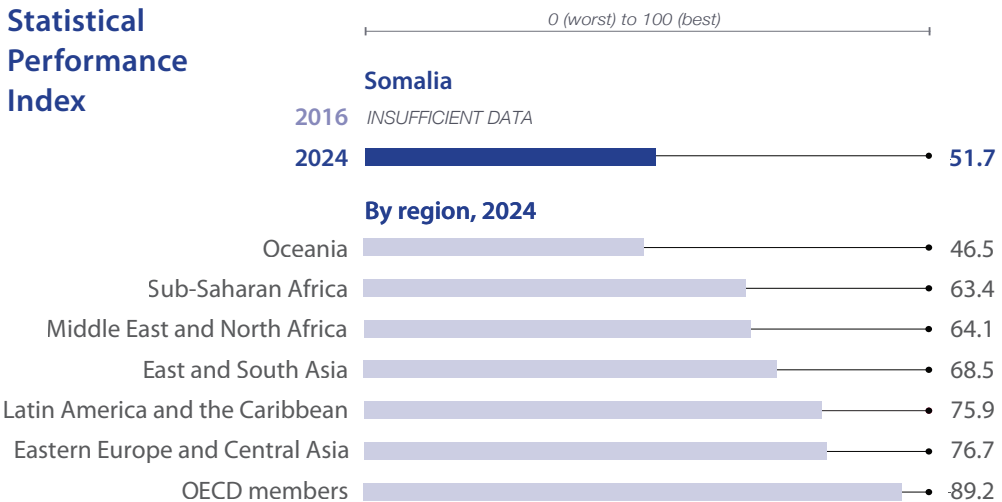


SDG Dashboard and Trends



■ Major challenges
 ■ Significant challenges
 ■ Challenges remain
 ■ SDG achieved
 ■ Information unavailable
↓ Decreasing
 → Stagnating
 ↗ Moderately improving
 ↑ On track or maintaining SDG achievement
 ● Information unavailable

Statistical Performance Index



Number of Voluntary National Reviews (VNRs)



*Progress (in percentage points) is based on a set of 17 headline SDG indicators. Please see the methodology section for details.

SDG1 – No Poverty	Value	Year	Rating	Trend	SDG9 – Industry, Innovation and Infrastructure	Value	Year	Rating	Trend
Poverty headcount ratio at \$3.00/day (%)	31.1	2026	●	→	Rural population with access to all-season roads (%)	60.3	2026	●	↓
Poverty headcount ratio at \$4.20/day (%)	47.0	2026	●	→	Population using the internet (%)	27.9	2024	●	↗
SDG2 – Zero Hunger					Mobile broadband subscriptions (per 100 population)				
Prevalence of undernourishment (%)	53.2	2023	●	→	Logistics Performance Index: Infrastructure Score (worst 1–5 best)	1.9	2023	●	→
Prevalence of stunting in children under 5 years of age (%)	25.3	2009	●	●	Times Higher Education world rankings: average score of top 3 universities (worst 0–100 best)	*	0.0	2026	●
Prevalence of wasting in children under 5 years of age (%)	14.3	2009	●	●	Articles published in academic journals (per 1,000 population)	0.0	2024	●	→
Minimum dietary diversity among children aged 6–23 months (%)	13.0	2018	●	●	Expenditure on research and development (% of GDP)	*	0.0	2024	●
Prevalence of obesity, BMI ≥ 30 (% of adult population)	14.6	2022	●	↓	Total patent applications by applicant's origin (per million population)	*	0.0	2024	●
Human Trophic Level (best 2–3 worst)	NA	NA	●	●	E-government: Online Services Index (worst 0–1 best)	0.3	2024	●	↗
Cereal yield (tonnes per hectare of harvested land)	0.5	2023	●	↓	SDG10 – Reduced Inequalities				
Progress towards productive and sustainable agriculture (worst 1–5 best)	2.3	2024	●	→	Gini coefficient	NA	NA	●	●
Exports of hazardous pesticides (tonnes per million population)	NA	NA	●	●	Palma ratio	NA	NA	●	●
SDG3 – Good Health and Well-Being					SDG11 – Sustainable Cities and Communities				
Maternal mortality ratio (per 100,000 live births)	562.6	2023	●	↗	Proportion of urban population living in slums (%)	48.7	2022	●	●
Neonatal mortality rate (per 1,000 live births)	34.2	2024	●	→	Annual mean concentration of PM2.5 (µg/m³)	12.8	2023	●	→
Mortality rate, under-5 (per 1,000 live births)	101.1	2024	●	↗	Access to improved water source, piped (% of urban population)	75.6	2024	●	↗
Incidence of tuberculosis (per 100,000 population)	151.0	2024	●	→	Population with convenient access to public transport in cities (%)	NA	NA	●	●
New HIV infections (per 1,000 uninfected population, all ages)	0.0	2022	●	↑	SDG12 – Responsible Consumption and Production				
Age-standardized death rate due to cardiovascular disease, cancer, diabetes, or chronic respiratory disease in adults aged 30 to 70 (%)	27.6	2021	●	→	Municipal solid waste (kg/capita/day)	0.1	2022	●	●
Age-standardized death rate due to air pollution (per 100,000 population)	77.6	2023	●	→	Electronic waste that is not recycled (kg/capita)	0.5	2022	●	●
Traffic deaths (per 100,000 population)	20.2	2021	●	↗	Production-based air pollution (DALYs per 1,000 population)	0.2	2024	●	↑
Life expectancy at birth (years)	59.1	2025	●	→	Air pollution associated with imports (DALYs per 1,000 population)	0.9	2024	●	→
Adolescent fertility rate (births per 1,000 females aged 15 to 19)	115.6	2017	●	●	Production-based nitrogen emissions (kg/capita)	13.4	2024	●	↑
Births attended by skilled health personnel (%)	31.9	2019	●	●	Nitrogen emissions associated with imports (kg/capita)	5.2	2024	●	→
Surviving infants who received 2 WHO-recommended vaccines (%)	64	2024	●	↗	Exports of plastic waste (kg/capita)	NA	NA	●	●
Universal health coverage (UHC) index of service coverage (worst 0–100 best)	30	2023	●	→	SDG13 – Climate Action				
Subjective well-being (average ladder score, worst 0–10 best)	4.5	2025	●	↓	CO ₂ emissions from fossil fuel combustion and cement production (tCO ₂ /capita)	0.1	2024	●	→
SDG4 – Quality Education					GHG emissions embodied in imports (tCO _{2e} /capita)	0.8	2024	●	↑
Participation rate in pre-primary organized learning (% of children aged 4 to 6)	NA	NA	●	●	CO ₂ emissions embodied in fossil fuel exports (tonnes/capita)	*	0.0	2025	●
Net primary enrollment rate (%)	NA	NA	●	●	SDG14 – Life Below Water				
Lower secondary completion rate (%)	NA	NA	●	●	Mean area that is protected in marine sites important to biodiversity (%)	0.0	2025	●	→
Literacy rate (% of population aged 15 to 24)	70.7	2022	●	●	Ocean Health Index: Clean Waters score (worst 0–100 best)	54.1	2025	●	→
SDG5 – Gender Equality					Fish caught from overexploited or collapsed stocks (% of total catch)	14.0	2018	●	↑
Demand for family planning satisfied by modern methods (% of females aged 15 to 49)	9.8	2025	●	→	Fish caught by trawling or dredging (%)	0.0	2019	●	●
Ratio of female-to-male mean years of education received (%)	30.5	2023	●	●	Fish caught that are then discarded (%)	14.9	2019	●	↓
Ratio of female-to-male labor force participation rate (%)	43.8	2025	●	↓	Marine biodiversity threats embodied in imports (per million population)	NA	NA	●	●
Seats held by women in national parliament (%)	19.0	2026	●	→	SDG15 – Life on Land				
SDG6 – Clean Water and Sanitation					Mean area that is protected in terrestrial sites important to biodiversity (%)	0.0	2025	●	→
Population using at least basic drinking water services (%)	75.3	2024	●	↗	Mean area that is protected in freshwater sites important to biodiversity (%)	0.0	2025	●	→
Population using at least basic sanitation services (%)	44.5	2024	●	→	Red List Index of species survival (worst 0–1 best)	0.9	2025	●	→
Freshwater withdrawal (% of available freshwater resources)	24.5	2023	●	↑	Permanent deforestation (% of forest area, 3-year average)	0.1	2024	●	●
Anthropogenic wastewater that receives treatment (%)	0.0	2015	●	●	Imported deforestation (m ² /capita)	0.4	2022	●	→
Scarce water consumption embodied in imports (m ³ H ₂ O eq/capita)	1,127.3	2024	●	↓	SDG16 – Peace, Justice and Strong Institutions				
SDG7 – Affordable and Clean Energy					Homicides (per 100,000 population)	NA	NA	●	●
Population with access to electricity (%)	50.3	2023	●	↓	Crime is effectively controlled (worst 0–1 best)	NA	NA	●	●
Population with access to clean fuels and technology for cooking (%)	5.4	2023	●	→	Unsented detainees (% of prison population)	NA	NA	●	●
CO ₂ emissions from fuel combustion per total electricity output (MtCO ₂ /TWh)	3.1	2024	●	→	Birth registrations with civil authority (% of children under age 5)	3.0	2006	●	●
Renewable energy share in total final energy consumption (%)	33.4	2022	●	↑	Corruption Perceptions Index (worst 0–100 best)	9.0	2025	●	→
SDG8 – Decent Work and Economic Growth					Children involved in child labor (%)	NA	NA	●	●
Adjusted GDP growth index (worst 0–100 best)	30.5	2024	●	●	Exports of major conventional weapons (TIV per 100,000 population)	*	0.0	2025	●
Victims of modern slavery (per 1,000 population)	6.2	2022	●	●	Press Freedom Index (worst 0–100 best)	43.8	2026	●	↗
Adults with an account at a bank or other financial institution or with a mobile-money-service provider (%)	38.7	2014	●	●	Access to and affordability of justice (worst 0–1 best)	NA	NA	●	●
Unemployment rate (% of total labor force, ages 15+)	18.9	2026	●	↓	Timeliness of administrative proceedings (worst 0–1 best)	NA	NA	●	●
Fundamental labor rights are effectively guaranteed (worst 0–1 best)	NA	NA	●	●	Expropriations are lawful and adequately compensated (worst 0–1 best)	NA	NA	●	●
					SDG17 – Partnerships for the Goals				
					Government spending on health and education (% of GDP)	0.5	2023	●	●
					For high-income and all OECD DAC countries: International concessional public finance, including official development assistance (% of GNI)	**	**	**	**
					Other countries: Government revenue excluding grants (% of GDP)	3.1	2024	●	●
					Corporate Tax Haven Score (best 0–100 worst)	*	0	2025	●
					Shifted profits of multinationals (US\$ billion)	*	0.0	2022	●
					Statistical Performance Index (worst 0–100 best)	51.7	2024	●	↑
					Index of countries' support to UN-based multilateralism (worst 0–100 best)	41.0	2026	●	→

* Imputed data point, ** Not applicable
NA = Data not available