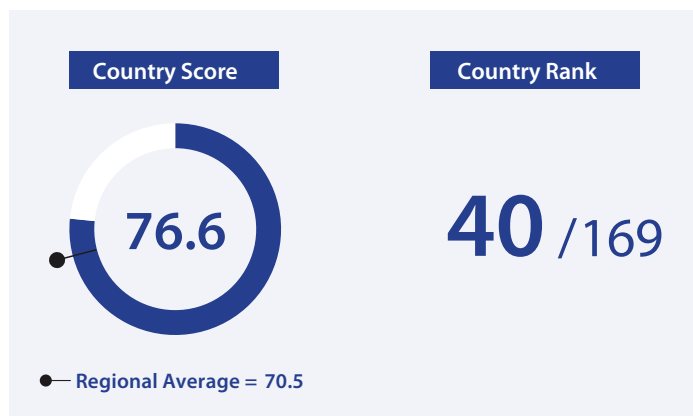
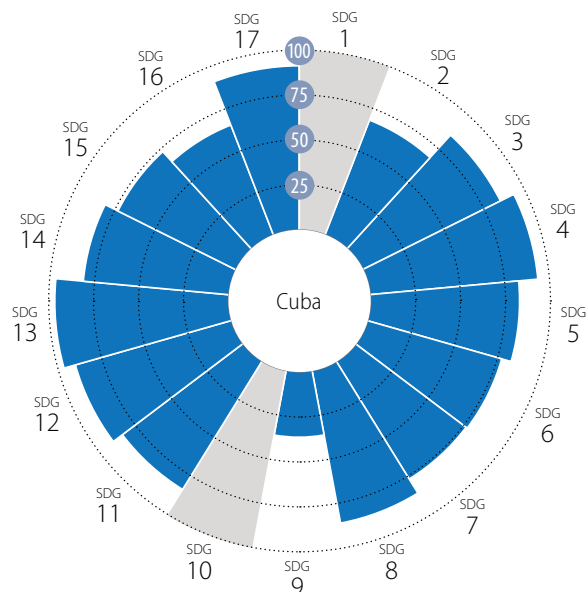


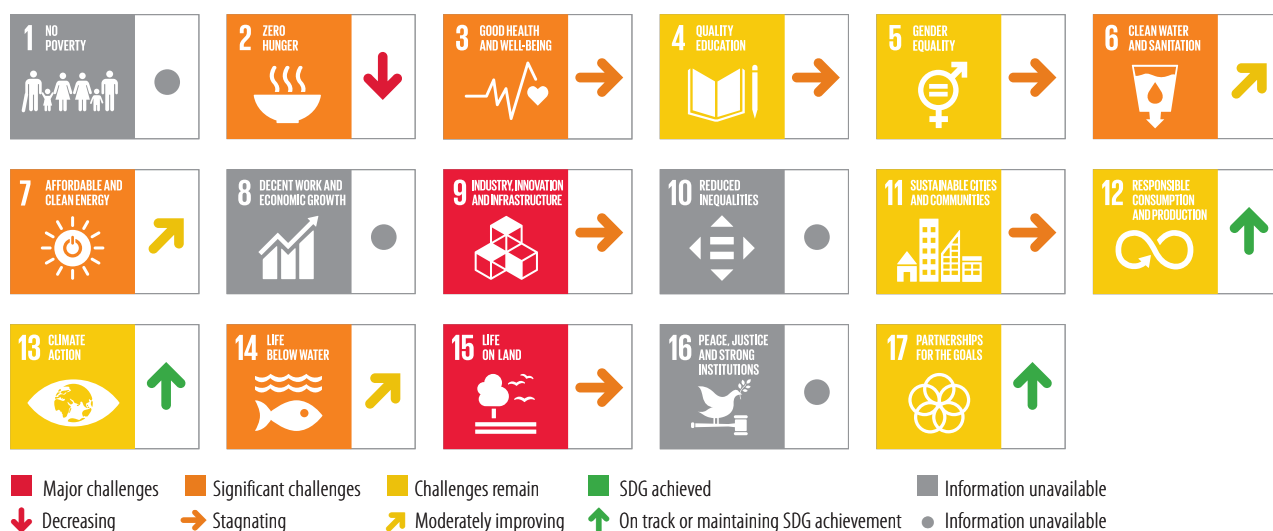
Overall Performance



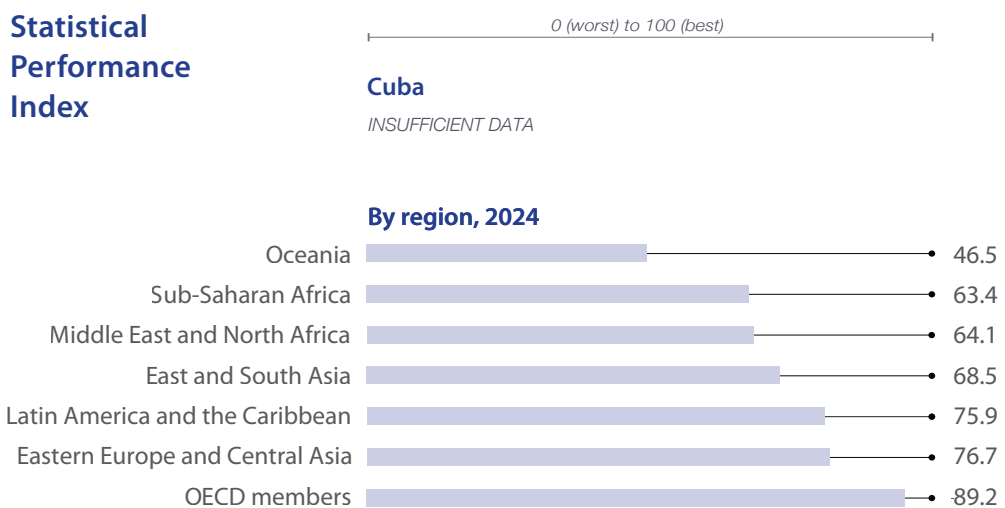
Average Performance by SDG



SDG Dashboard and Trends



Statistical Performance Index



Number of Voluntary National Reviews (VNRs)



*Progress (in percentage points) is based on a set of 17 headline SDG indicators. Please see the methodology section for details.

SDG1 – No Poverty	Value	Year	Rating	Trend
Poverty headcount ratio at \$3.00/day (%)	NA	NA	● ●	
Poverty headcount ratio at \$4.20/day (%)	NA	NA	● ●	
SDG2 – Zero Hunger				
Prevalence of undernourishment (%)	2.5	2006	● ●	
Prevalence of stunting in children under 5 years of age (%)	7.1	2019	● ●	
Prevalence of wasting in children under 5 years of age (%)	2.0	2019	● ●	
Minimum dietary diversity among children aged 6–23 months (%)	57.9	2019	● ●	
Prevalence of obesity, BMI ≥ 30 (% of adult population)	21.8	2022	● ↓	
Human Trophic Level (best 2–3 worst)	2.2	2022	● →	
Cereal yield (tonnes per hectare of harvested land)	2.1	2023	● ↓	
Progress towards productive and sustainable agriculture (worst 1–5 best)	3.0	2024	● ↓	
Exports of hazardous pesticides (tonnes per million population)	0.0	2021	● ●	
SDG3 – Good Health and Well-Being				
Maternal mortality ratio (per 100,000 live births)	34.8	2023	● ↑	
Neonatal mortality rate (per 1,000 live births)	4.3	2024	● →	
Mortality rate, under-5 (per 1,000 live births)	8.6	2024	● →	
Incidence of tuberculosis (per 100,000 population)	11.0	2024	● ↓	
New HIV infections (per 1,000 uninfected population, all ages)	0.2	2024	● ↑	
Age-standardized death rate due to cardiovascular disease, cancer, diabetes, or chronic respiratory disease in adults aged 30 to 70 (%)	17.6	2021	● ↓	
Age-standardized death rate due to air pollution (per 100,000 population)	43.8	2023	● →	
Traffic deaths (per 100,000 population)	5.4	2021	● ↑	
Life expectancy at birth (years)	78.4	2025	● →	
Adolescent fertility rate (births per 1,000 females aged 15 to 19)	48.6	2022	● →	
Births attended by skilled health personnel (%)	99.8	2024	● →	
Surviving infants who received 2 WHO-recommended vaccines (%)	99	2024	● ↑	
Universal health coverage (UHC) index of service coverage (worst 0–100 best)	86	2023	● ↑	
Subjective well-being (average ladder score, worst 0–10 best)	5.4	2011	● ●	
SDG4 – Quality Education				
Participation rate in pre-primary organized learning (% of children aged 4 to 6)	97.1	2024	● →	
Net primary enrollment rate (%)	95.3	2024	● ↓	
Lower secondary completion rate (%)	89.2	2024	● ↑	
Literacy rate (% of population aged 15 to 24)	99.6	2019	● ●	
SDG5 – Gender Equality				
Demand for family planning satisfied by modern methods (% of females aged 15 to 49)	84.0	2025	● →	
Ratio of female-to-male mean years of education received (%)	101.9	2023	● ↑	
Ratio of female-to-male labor force participation rate (%)	61.4	2025	● ↓	
Seats held by women in national parliament (%)	57.2	2026	● ↑	
SDG6 – Clean Water and Sanitation				
Population using at least basic drinking water services (%)	95.1	2024	● ↑	
Population using at least basic sanitation services (%)	94.8	2024	● ↑	
Freshwater withdrawal (% of available freshwater resources)	22.2	2023	● →	
Anthropogenic wastewater that receives treatment (%)	24.3	2021	● ●	
Scarce water consumption embodied in imports (m ³ H ₂ O eq/capita)	284.1	2024	● ↑	
SDG7 – Affordable and Clean Energy				
Population with access to electricity (%)	100.0	2023	● ↑	
Population with access to clean fuels and technology for cooking (%)	94.9	2023	● ↑	
CO ₂ emissions from fuel combustion per total electricity output (MtCO ₂ /TWh)	1.3	2024	● ↗	
Renewable energy share in total final energy consumption (%)	18.2	2022	● ↓	
SDG8 – Decent Work and Economic Growth				
Adjusted GDP growth index (worst 0–100 best)	NA	NA	● ●	
Victims of modern slavery (per 1,000 population)	5.4	2022	● ●	
Adults with an account at a bank or other financial institution or with a mobile-money-service provider (%)	NA	NA	● ●	
Unemployment rate (% of total labor force, ages 15+)	1.7	2026	● ↑	
Fundamental labor rights are effectively guaranteed (worst 0–1 best)	NA	NA	● ●	
SDG9 – Industry, Innovation and Infrastructure				
Rural population with access to all-season roads (%)	92.6	2026	● →	
Population using the internet (%)	70.5	2024	● ↑	
Mobile broadband subscriptions (per 100 population)	52.4	2024	● ↑	
Logistics Performance Index: Infrastructure Score (worst 1–5 best)	2.2	2023	● ↓	
Times Higher Education world rankings: average score of top 3 universities (worst 0–100 best)	18.8	2026	● ●	
Articles published in academic journals (per 1,000 population)	0.2	2024	● →	
Expenditure on research and development (% of GDP)	0.4	2024	● →	
Total patent applications by applicant's origin (per million population)	12.7	2024	● ↓	
E-government: Online Services Index (worst 0–1 best)	0.2	2024	● →	
SDG10 – Reduced Inequalities				
Gini coefficient	NA	NA	● ●	
Palma ratio	NA	NA	● ●	
SDG11 – Sustainable Cities and Communities				
Proportion of urban population living in slums (%)	11.0	2022	● ●	
Annual mean concentration of PM _{2.5} (µg/m ³)	10.9	2023	● →	
Access to improved water source, piped (% of urban population)	86.6	2024	● →	
Population with convenient access to public transport in cities (%)	67.2	2020	● ●	
SDG12 – Responsible Consumption and Production				
Municipal solid waste (kg/capita/day)	1.1	2022	● ●	
Electronic waste that is not recycled (kg/capita)	NA	NA	● ●	
Production-based air pollution (DALYs per 1,000 population)	2.0	2024	● ↑	
Air pollution associated with imports (DALYs per 1,000 population)	0.8	2024	● ↑	
Production-based nitrogen emissions (kg/capita)	23.4	2024	● ↑	
Nitrogen emissions associated with imports (kg/capita)	5.4	2024	● ↑	
Exports of plastic waste (kg/capita)	0.0	2021	● ●	
SDG13 – Climate Action				
CO ₂ emissions from fossil fuel combustion and cement production (tCO ₂ /capita)	2.2	2024	● ↑	
GHG emissions embodied in imports (tCO _{2e} /capita)	0.5	2024	● ↑	
CO ₂ emissions embodied in fossil fuel exports (tonnes/capita)	0.1	2021	● ●	
SDG14 – Life Below Water				
Mean area that is protected in marine sites important to biodiversity (%)	70.1	2025	● →	
Ocean Health Index: Clean Waters score (worst 0–100 best)	81.0	2025	● ↑	
Fish caught from overexploited or collapsed stocks (% of total catch)	54.3	2018	● →	
Fish caught by trawling or dredging (%)	2.7	2019	● ↑	
Fish caught that are then discarded (%)	0.0	2019	● ↑	
Marine biodiversity threats embodied in imports (per million population)	0.02	2018	● ●	
SDG15 – Life on Land				
Mean area that is protected in terrestrial sites important to biodiversity (%)	55.8	2025	● →	
Mean area that is protected in freshwater sites important to biodiversity (%)	98.2	2025	● ↑	
Red List Index of species survival (worst 0–1 best)	0.69	2025	● ↓	
Permanent deforestation (% of forest area, 3-year average)	0.1	2024	● ●	
Imported deforestation (m ² /capita)	3.4	2022	● ↑	
SDG16 – Peace, Justice and Strong Institutions				
Homicides (per 100,000 population)	4.5	2019	● ●	
Crime is effectively controlled (worst 0–1 best)	NA	NA	● ●	
Unsentenced detainees (% of prison population)	NA	NA	● ●	
Birth registrations with civil authority (% of children under age 5)	99.8	2019	● ●	
Corruption Perceptions Index (worst 0–100 best)	40.0	2025	● ↓	
Children involved in child labor (%)	NA	NA	● ●	
Exports of major conventional weapons (TIV per 100,000 population) *	0.00	2025	● ●	
Press Freedom Index (worst 0–100 best)	29.2	2026	● ↓	
Access to and affordability of justice (worst 0–1 best)	NA	NA	● ●	
Timeliness of administrative proceedings (worst 0–1 best)	NA	NA	● ●	
Expropriations are lawful and adequately compensated (worst 0–1 best)	NA	NA	● ●	
SDG17 – Partnerships for the Goals				
Government spending on health and education (% of GDP)	16.3	2023	● ↑	
For high-income and all OECD DAC countries: International concessional public finance, including official development assistance (% of GNI)	**	**	**	**
Other countries: Government revenue excluding grants (% of GDP)	NA	NA	● ●	
Corporate Tax Haven Score (best 0–100 worst) *	0	2025	● ●	
Shifted profits of multinationals (US\$ billion) *	0.0	2022	● ●	
Statistical Performance Index (worst 0–100 best)	NA	NA	● ●	
Index of countries' support to UN-based multilateralism (worst 0–100 best)	67.9	2026	● ↑	

* Imputed data point, ** Not applicable
NA = Data not available