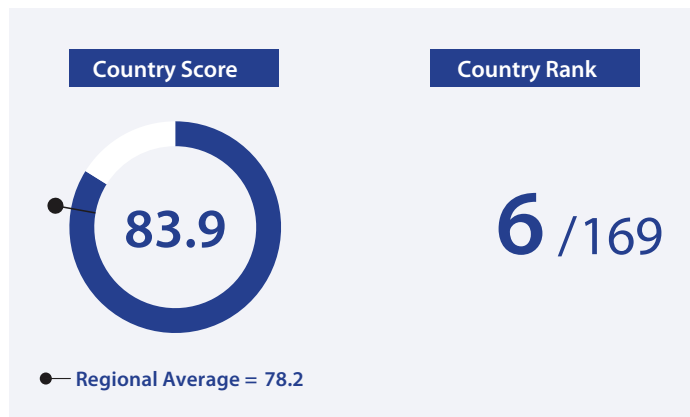
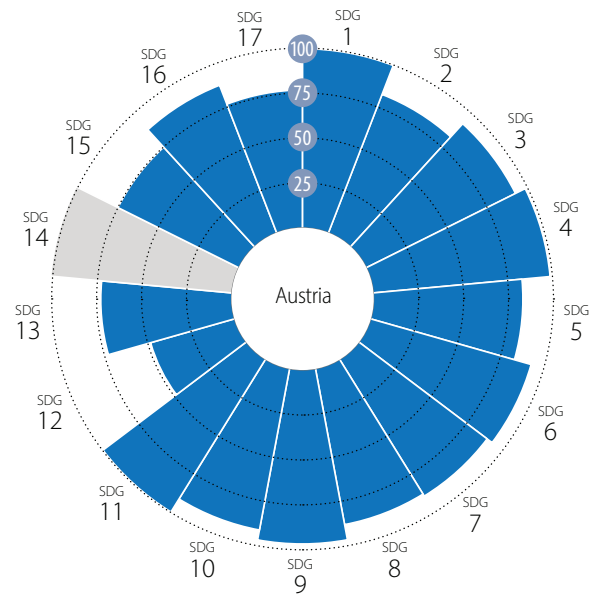


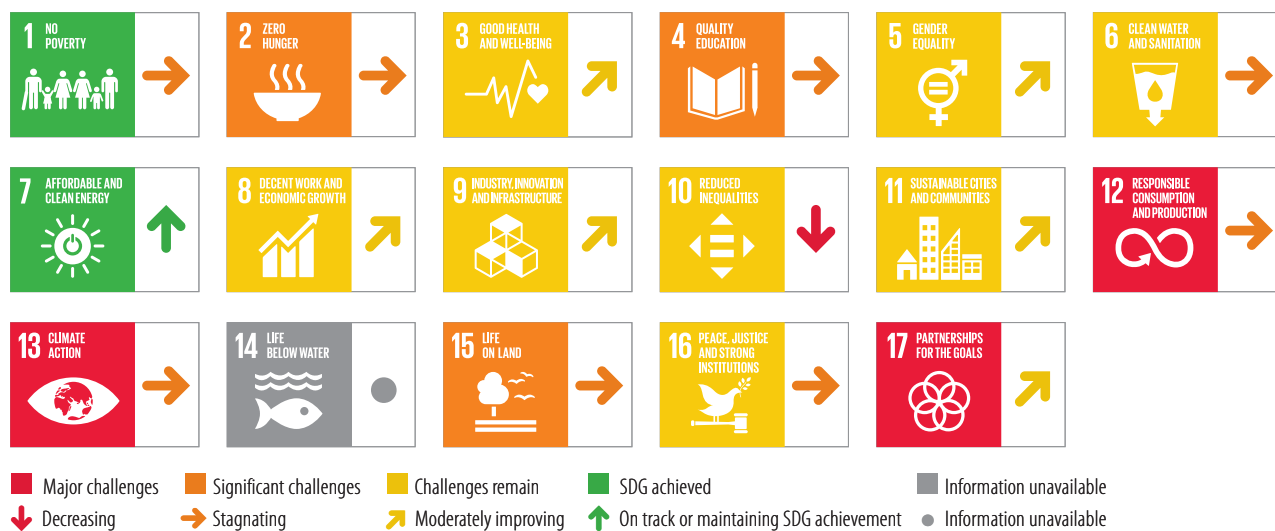
Overall Performance



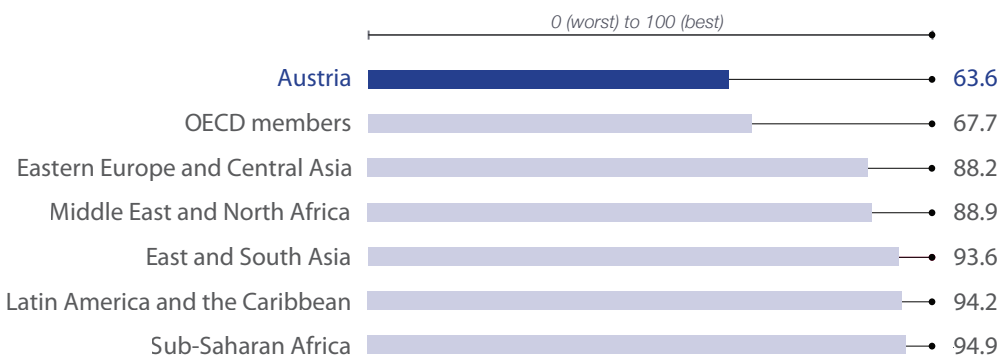
Average Performance by SDG



SDG Dashboard and Trends



International Spillover Index



Number of Voluntary National Reviews (VNRs)



*Progress (in percentage points) is based on a set of 17 headline SDG indicators. Please see the methodology section for details.

SDG1 – No Poverty	Value	Year	Rating	Trend	SDG9 – Industry, Innovation and Infrastructure	Value	Year	Rating	Trend	
Poverty headcount ratio at \$3.00/day (%)	0.3	2026	●	→	Rural population with access to all-season roads (%)	100.0	2026	●	↑	
Poverty headcount ratio at \$4.20/day (%)	0.4	2026	●	→	Population using the internet (%)	91.9	2025	●	↑	
Poverty rate after taxes and transfers (%)	9.3	2023	●	→	Mobile broadband subscriptions (per 100 population)	132.1	2024	●	↑	
SDG2 – Zero Hunger					Logistics Performance Index: Infrastructure Score (worst 1–5 best)	3.9	2023	●	↑	
Prevalence of undernourishment (%)	2.5	2023	●	↑	Times Higher Education world rankings: average score of top 3 universities (worst 0–100 best)	61.3	2026	●	↑	
Prevalence of stunting in children under 5 years of age (%)	*	2.6	2023	●	Articles published in academic journals (per 1,000 population)	3.4	2024	●	↑	
Prevalence of wasting in children under 5 years of age (%)	*	0.7	2023	●	Expenditure on research and development (% of GDP)	3.3	2023	●	↑	
Minimum dietary diversity among children aged 6–23 months (%)	*	90.0	2025	●	Total patent applications by applicant's origin (per million population)	1,404.6	2024	●	↑	
Prevalence of obesity, BMI ≥ 30 (% of adult population)	15.4	2022	●	↓	Researchers (per 1,000 employed population)	13.1	2024	●	↑	
Human Trophic Level (best 2–3 worst)	2.4	2023	●	↓	Female share of graduates from STEM fields at the tertiary level (%)	29.4	2023	●	↑	
Cereal yield (tonnes per hectare of harvested land)	7.1	2023	●	→	E-government: Online Services Index (worst 0–1 best)	0.8	2024	●	→	
Progress towards productive and sustainable agriculture (worst 1–5 best)	4.4	2024	●	→	SDG10 – Reduced Inequalities					
Yield gap closure (% of potential yield)	73.1	2024	●	●	Gini coefficient	31.2	2023	●	→	
Exports of hazardous pesticides (tonnes per million population)	14.4	2023	●	●	Palma ratio	1.0	2023	●	↓	
SDG3 – Good Health and Well-Being					Elderly poverty rate (% of population aged 66 or over)	12.3	2023	●	↓	
Maternal mortality ratio (per 100,000 live births)	6.1	2023	●	↑	SDG11 – Sustainable Cities and Communities					
Neonatal mortality rate (per 1,000 live births)	2.2	2024	●	↑	Proportion of urban population living in slums (%)	*	0.0	2022	●	↑
Mortality rate, under-5 (per 1,000 live births)	3.3	2024	●	↑	Annual mean concentration of PM2.5 (µg/m³)	8.9	2023	●	↑	
Incidence of tuberculosis (per 100,000 population)	4.9	2024	●	↑	Access to improved water source, piped (% of urban population)	NA	NA	●	●	
New HIV infections (per 1,000 uninfected population, all ages)	NA	NA	●	●	Population with rent overburden (%)	12.4	2022	●	↓	
Age-standardized death rate due to cardiovascular disease, cancer, diabetes, or chronic respiratory disease in adults aged 30 to 70 (%)	9.9	2021	●	↑	Urban population with access to points of interest within a 15min walk (%)	98.0	2025	●	↑	
Age-standardized death rate due to air pollution (per 100,000 population)	36.8	2023	●	↑	Population with convenient access to public transport in cities (%)	99.7	2024	●	●	
Traffic deaths (per 100,000 population)	4.6	2021	●	↑	SDG12 – Responsible Consumption and Production					
Life expectancy at birth (years)	82.3	2025	●	↑	Electronic waste that is not recycled (kg/capita)	4.7	2022	●	●	
Adolescent fertility rate (births per 1,000 females aged 15 to 19)	3.9	2022	●	↑	Production-based air pollution (DALYs per 1,000 population)	12.8	2024	●	→	
Births attended by skilled health personnel (%)	98.7	2024	●	↑	Air pollution associated with imports (DALYs per 1,000 population)	13.9	2024	●	↓	
Surviving infants who received 2 WHO-recommended vaccines (%)	85	2024	●	↓	Production-based nitrogen emissions (kg/capita)	43.1	2024	●	→	
Universal health coverage (UHC) index of service coverage (worst 0–100 best)	84	2023	●	↑	Nitrogen emissions associated with imports (kg/capita)	50.0	2024	●	↓	
Subjective well-being (average ladder score, worst 0–10 best)	6.8	2025	●	→	Exports of plastic waste (kg/capita)	18.7	2024	●	●	
Gap in life expectancy at birth among regions (years)	2.3	2023	●	→	Non-recycled municipal solid waste (kg/capita/day)	0.8	2023	●	↓	
Gap in self-reported health status by income (percentage points)	23.7	2024	●	↓	SDG13 – Climate Action					
Daily smokers (% of population aged 15 and over)	20.6	2019	●	●	CO ₂ emissions from fossil fuel combustion and cement production (tCO ₂ /capita)	6.2	2024	●	→	
SDG4 – Quality Education					GHG emissions embodied in imports (tCO ₂ e/capita)	8.6	2024	●	↓	
Participation rate in pre-primary organized learning (% of children aged 4 to 6)	97.2	2024	●	↑	CO ₂ emissions embodied in fossil fuel exports (tonnes/capita)	0.2	2024	●	●	
Net primary enrollment rate (%)	98.6	2024	●	→	Net Effective Carbon Rate (EUR/tCO ₂ e)	85.9	2023	●	↑	
Lower secondary completion rate (%)	*	98.4	2023	●	↑	SDG14 – Life Below Water				
Literacy rate (% of population aged 15 to 24)	*	100.0	2024	●	●	Mean area that is protected in marine sites important to biodiversity (%)	NA	NA	●	●
Tertiary educational attainment (% of population aged 25 to 34)	43.5	2023	●	↑	Ocean Health Index: Clean Waters score (worst 0–100 best)	NA	NA	●	●	
PISA score (worst 0–600 best)	486.3	2022	●	↓	Fish caught from overexploited or collapsed stocks (% of total catch)	NA	NA	●	●	
Variation in mathematics performance explained by socio-economic status (%)	19.4	2022	●	↓	Fish caught by trawling or dredging (%)	NA	NA	●	●	
Underachievers in mathematics (% of 15-year-olds)	24.9	2022	●	↓	Fish caught that are then discarded (%)	NA	NA	●	●	
SDG5 – Gender Equality					Marine biodiversity threats embodied in imports (per million population)	0.07	2018	●	●	
Demand for family planning satisfied by modern methods (% of females aged 15 to 49)	88.9	2025	●	↑	SDG15 – Life on Land					
Ratio of female-to-male mean years of education received (%)	96.2	2023	●	↑	Mean area that is protected in terrestrial sites important to biodiversity (%)	68.1	2025	●	→	
Ratio of female-to-male labor force participation rate (%)	84.2	2025	●	↑	Mean area that is protected in freshwater sites important to biodiversity (%)	71.4	2025	●	→	
Seats held by women in national parliament (%)	35.5	2026	●	→	Red List Index of species survival (worst 0–1 best)	0.95	2025	●	→	
Gender wage gap (% of male median wage)	11.1	2024	●	↑	Permanent deforestation (% of forest area, 3-year average)	0.0	2024	●	●	
SDG6 – Clean Water and Sanitation					Imported deforestation (m ² /capita)	27.3	2022	●	↓	
Population using at least basic drinking water services (%)	100.0	2024	●	↑	SDG16 – Peace, Justice and Strong Institutions					
Population using at least basic sanitation services (%)	100.0	2024	●	→	Homicides (per 100,000 population)	1.0	2024	●	→	
Freshwater withdrawal (% of available freshwater resources)	8.7	2023	●	↑	Crime is effectively controlled (worst 0–1 best)	0.9	2024	●	↑	
Anthropogenic wastewater that receives treatment (%)	96.0	2021	●	●	Unsented detainees (% of prison population)	19.5	2024	●	↑	
Scarce water consumption embodied in imports (m ³ H ₂ O eq/capita)	3,039.7	2024	●	→	Birth registrations with civil authority (% of children under age 5)	100.0	2024	●	●	
Population using safely managed water services (%)	98.9	2024	●	→	Corruption Perceptions Index (worst 0–100 best)	69.0	2025	●	→	
Population using safely managed sanitation services (%)	98.5	2024	●	→	Children involved in child labor (%)	0.0	2025	●	●	
SDG7 – Affordable and Clean Energy					Exports of major conventional weapons (TIV per 100,000 population)	0.08	2025	●	↑	
Population with access to electricity (%)	100.0	2023	●	↑	Press Freedom Index (worst 0–100 best)	79.4	2026	●	→	
Population with access to clean fuels and technology for cooking (%)	100.0	2023	●	↑	Access to and affordability of justice (worst 0–1 best)	0.67	2024	●	→	
CO ₂ emissions from fuel combustion per total electricity output (MtCO ₂ /TWh)	0.8	2024	●	↑	Timeliness of administrative proceedings (worst 0–1 best)	0.62	2024	●	↓	
Renewable energy share in total final energy consumption (%)	36.9	2022	●	↑	Expropriations are lawful and adequately compensated (worst 0–1 best)	0.80	2024	●	→	
SDG8 – Decent Work and Economic Growth					Persons held in prison (per 100,000 population)	99.5	2023	●	→	
Adjusted GDP growth index (worst 0–100 best)	70.3	2024	●	●	SDG17 – Partnerships for the Goals					
Victims of modern slavery (per 1,000 population)	1.9	2022	●	●	Government spending on health and education (% of GDP)	13.8	2023	●	↑	
Adults with an account at a bank or other financial institution or with a mobile-money-service provider (%)	99.5	2024	●	↑	For high-income and all OECD DAC countries: International concessional public finance, including official development assistance (% of GNI)	0.33	2025	●	→	
Unemployment rate (% of total labor force, ages 15+)	5.7	2026	●	→	Other countries: Government revenue excluding grants (% of GDP)	**	**	**	**	
Fundamental labor rights are effectively guaranteed (worst 0–1 best)	0.82	2024	●	↑	Corporate Tax Haven Score (best 0–100 worst)	52	2025	●	↓	
Youth not in employment, education, or training (NEET) (% of population aged 15 to 24)	9.0	2022	●	↑	Financial Secrecy Score (best 0–100 worst)	60	2025	●	↓	
					Shifted profits of multinationals (US\$ billion)	*	0.0	2022	●	●
					Statistical Performance Index (worst 0–100 best)	89.3	2024	●	↑	
					Index of countries' support to UN-based multilateralism (worst 0–100 best)	74.5	2026	●	→	

* Imputed data point, ** Not applicable
NA = Data not available