

Xilinx Vivado 2022.1 Installation

Software used in



Procedure

Updated: 7/26/2022

Before you start

Multisim 14.1 is required to connect with the PLTW S7 chip.

It is imperative that you consult your IT team before you install any software or attempt to change any settings on your computer. Administrative rights are based on a profile created by your System Administrator. Many variations are possible, and these “rights” may not allow you to install this software properly.

Please note: If the previous installation of Vivado 2017.4 is working properly for you, you are not required to move to the 2022.1 version of Vivado.

Prepare Your System

1. Disable the User Account Controls (set to **Never notify**).
2. Disable your anti-virus software.
3. Disable the pop-up blocker in the browser you are using.

Note: You can re-enable these settings after the software is installed and operational.

4. Ensure you have permissions to install USB drivers and all USB driver installation through the network.



Procedure: Install Vivado ML Edition with the Unified Installer

The CMOS S7 has an XC7S25 FPGA on it, and to program it from Multisim follow these steps. This installation takes about 3 hours to complete. You will need 130 GB of free disk space to install, and the program will take up around 45 GB of memory on the hard drive. **Note: If you are not logged in as the local admin, the software may not work after installation.**

1. Navigate to the Xilinx support page using the link below.
<https://www.xilinx.com/support/download.html>
2. Select 2022.1 from the left side of the screen.

Version

- 2022.1
- 2021.2
- 2021.1
- Vivado Archive
- ISE Archive
- CAE Vendor Libraries Archive

Vivado ML Edition - 2022.1 Full Product Installation

Important Information

Vivado ML 2022.1 is now available for download:

- 5-8% Versal QoR improvement
- Introducing ML-based resource estimation
- ML Strategy Runs now available for Versal devices
- Devices enabled in the Enterprise & Standard Editions of Vivado ML
 - Artix® UltraScale+™ devices: XCAU15P and XCAU10P
 - Additional Versal® Prime, Premium, AI Core, and AI Edge series devices

We **strongly recommend** to use the web installers as it reduces download time and

Download Includes	Vivado ML Edition
Download Type	Full Product Installation
Last Updated	Apr 26, 2022
Answers	2022.x - Vivado Known Issues
Documentation	Release Notes OS Support Update What's New in Vivado
Support Forums	Installation and Licensing

3. Select **Xilinx Unified Installer 2022.1: Windows Self Extracting Web Installer** under Vivado ML Edition - 2022.1 Full Product Installation.

Xilinx Unified Installer 2022.1: Windows Self Extracting Web Installer (EXE - 205.92 MB)

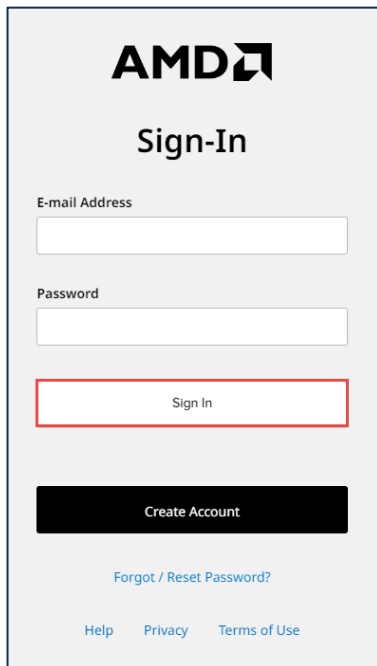
MD5 SUM Value : 76a6221ea8eed8c635c654cc100a1cae

Download Verification

Digests **Signature** **Public Key**

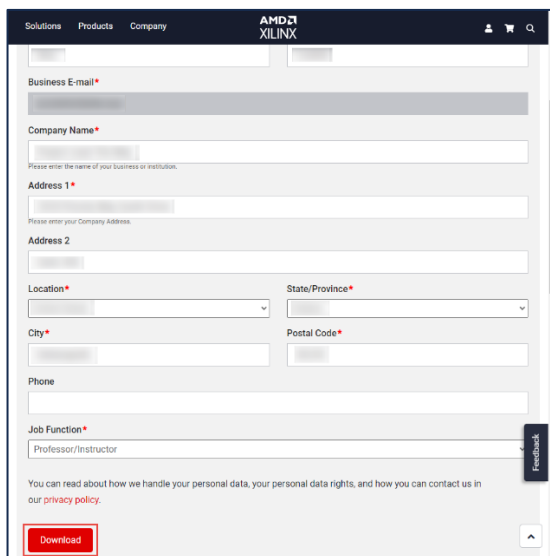


- This will prompt you to sign in. If you do not have a Xilinx account then select Create Your Account.



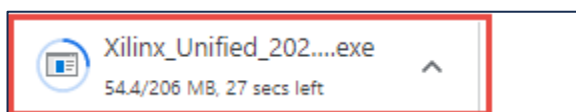
The image shows the AMD Sign-In page. At the top is the AMD logo. Below it is the heading "Sign-In". There are two input fields: "E-mail Address" and "Password". Below these is a "Sign In" button. Further down is a "Create Account" button. At the bottom, there is a link for "Forgot / Reset Password?" and three links: "Help", "Privacy", and "Terms of Use".

- Follow the prompts to create an account if needed.
- Sign in with your account information, if you are prompted again.
- Enter the required information and then select Next at the bottom to start the download process.

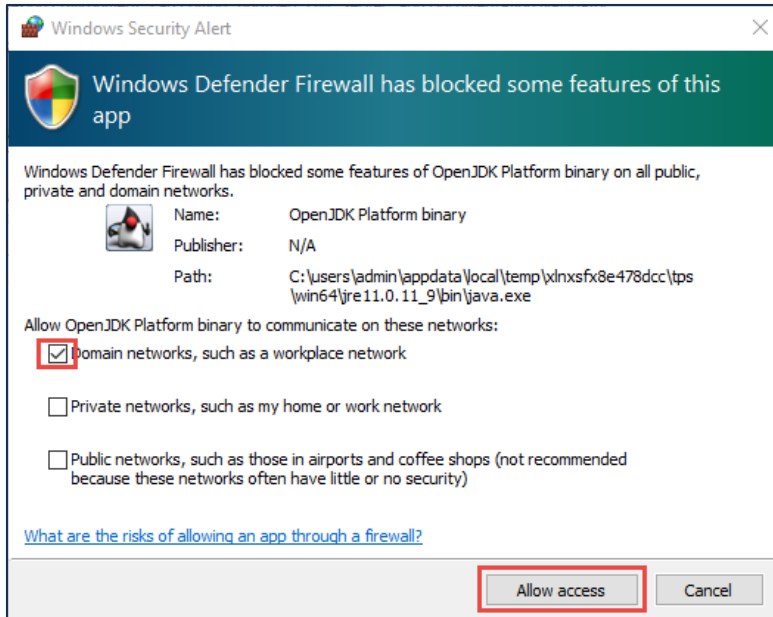


The image shows the AMD Xilinx registration form. The header includes "Solutions", "Products", "Company", and the AMD XILINX logo. The form fields include: "Business E-mail", "Company Name", "Address 1", "Address 2", "Location" (dropdown), "State/Province" (dropdown), "City", "Postal Code", "Phone", and "Job Function" (with "Professor/Instructor" selected). There is a "Download" button at the bottom left and a "Feedback" button on the right. A privacy policy link is also present.

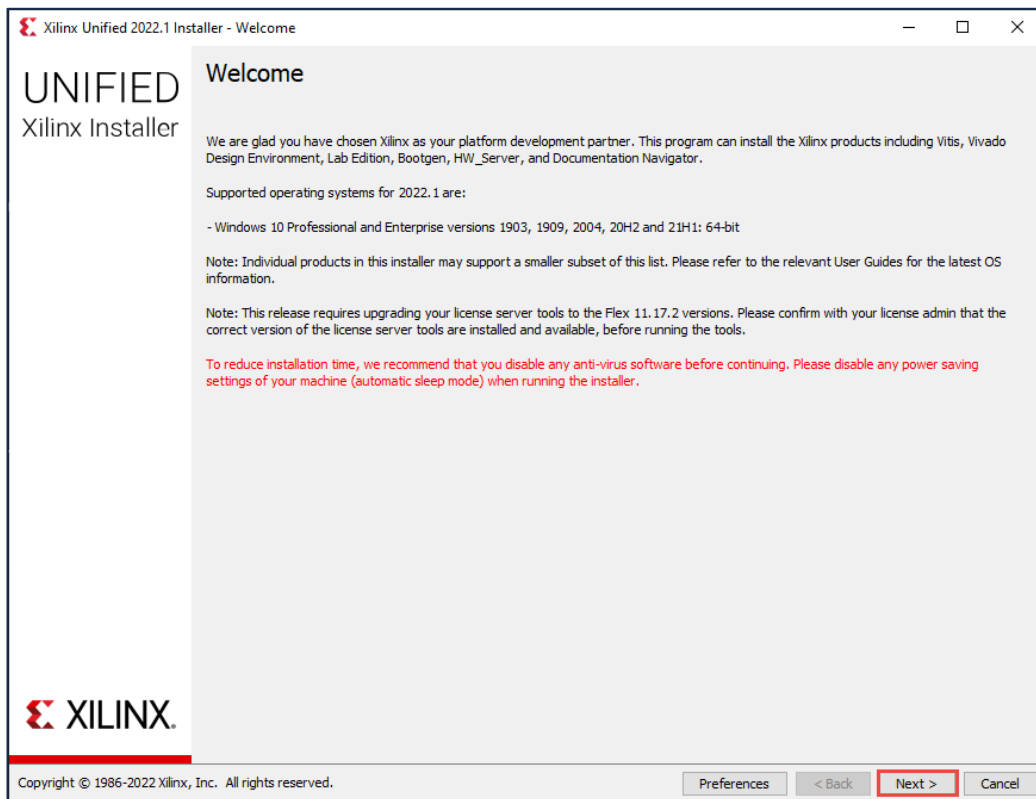
- Once the software is downloaded, launch the installer.



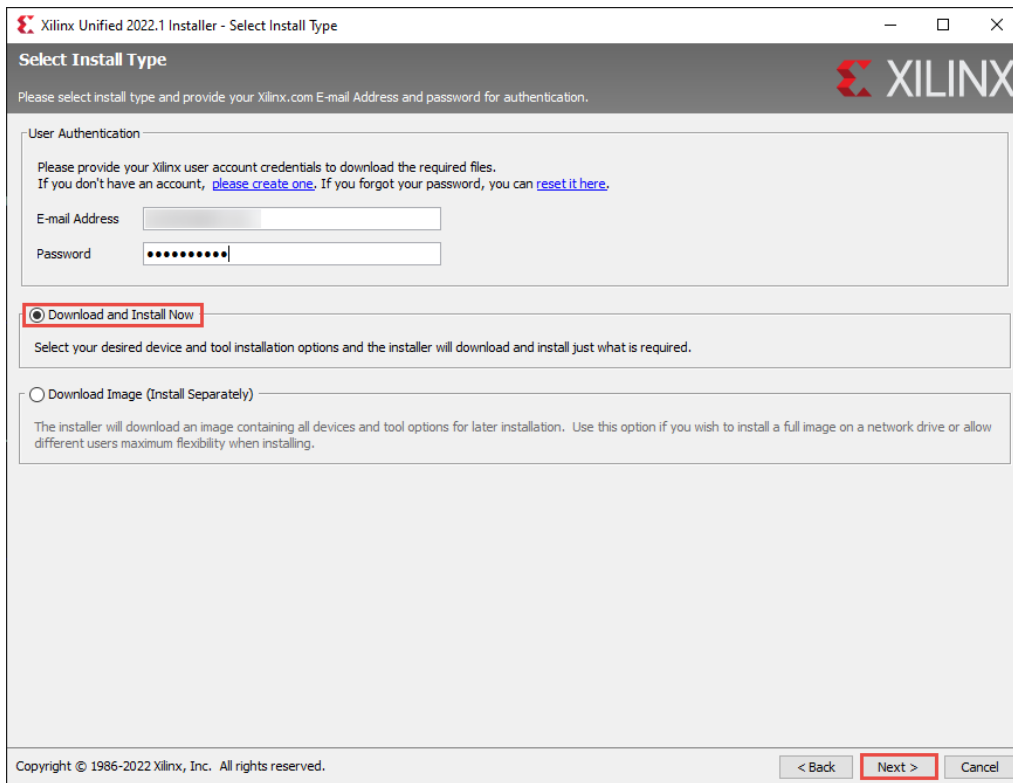
9. If prompted, allow the .exe in through the network firewall.



10. On the Welcome screen select Next.



11. Enter the User profile credentials from the earlier step, select Download and Install Now, and select Next. If you would like download to a network drive, select Download Image.



Xilinx Unified 2022.1 Installer - Select Install Type

Please select install type and provide your Xilinx.com E-mail Address and password for authentication.

User Authentication

Please provide your Xilinx user account credentials to download the required files.
If you don't have an account, [please create one](#). If you forgot your password, you can [reset it here](#).

E-mail Address:

Password:

☒ **Download and Install Now**

Select your desired device and tool installation options and the installer will download and install just what is required.

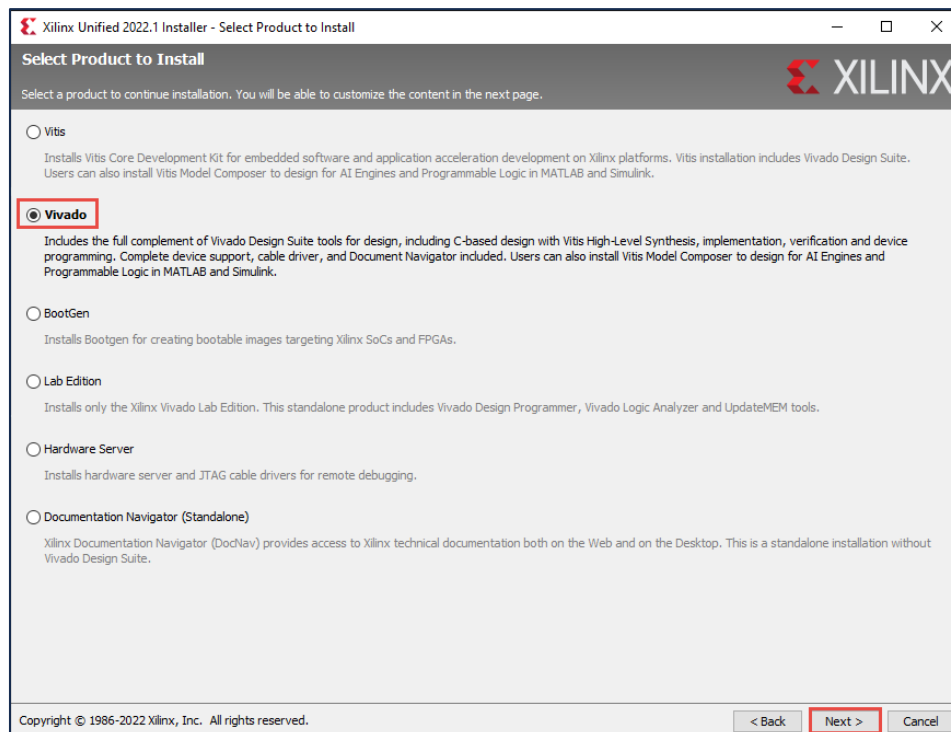
☐ **Download Image (Install Separately)**

The installer will download an image containing all devices and tool options for later installation. Use this option if you wish to install a full image on a network drive or allow different users maximum flexibility when installing.

Copyright © 1986-2022 Xilinx, Inc. All rights reserved.

< Back **Next >** Cancel

12. Select Vivado and Select Next.



Xilinx Unified 2022.1 Installer - Select Product to Install

Select a product to continue installation. You will be able to customize the content in the next page.

☐ **Vitis**

Installs Vitis Core Development Kit for embedded software and application acceleration development on Xilinx platforms. Vitis installation includes Vivado Design Suite. Users can also install Vitis Model Composer to design for AI Engines and Programmable Logic in MATLAB and Simulink.

☒ **Vivado**

Includes the full complement of Vivado Design Suite tools for design, including C-based design with Vitis High-Level Synthesis, implementation, verification and device programming. Complete device support, cable driver, and Document Navigator included. Users can also install Vitis Model Composer to design for AI Engines and Programmable Logic in MATLAB and Simulink.

☐ **BootGen**

Installs Bootgen for creating bootable images targeting Xilinx SoCs and FPGAs.

☐ **Lab Edition**

Installs only the Xilinx Vivado Lab Edition. This standalone product includes Vivado Design Programmer, Vivado Logic Analyzer and UpdateMEM tools.

☐ **Hardware Server**

Installs hardware server and JTAG cable drivers for remote debugging.

☐ **Documentation Navigator (Standalone)**

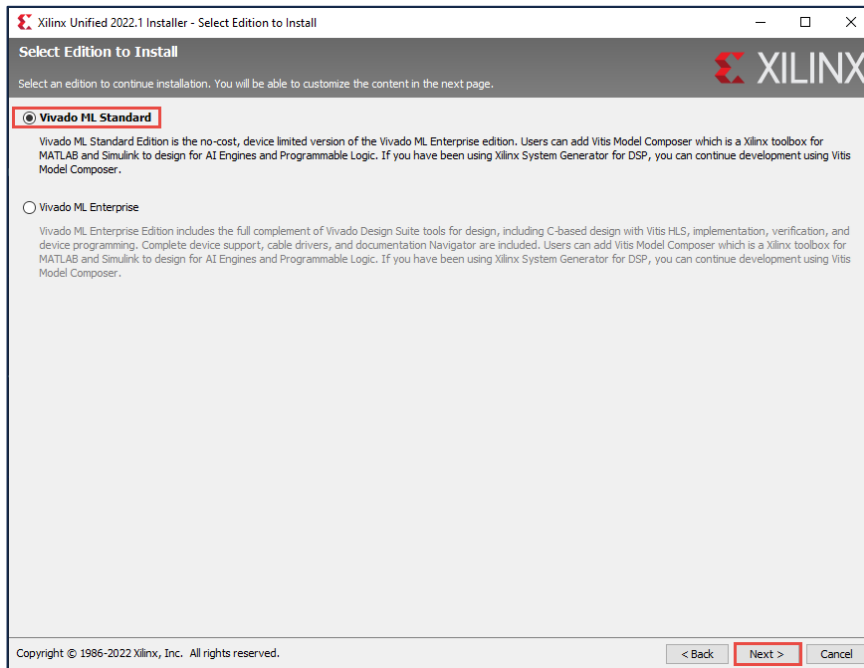
Xilinx Documentation Navigator (DocNav) provides access to Xilinx technical documentation both on the Web and on the Desktop. This is a standalone installation without Vivado Design Suite.

Copyright © 1986-2022 Xilinx, Inc. All rights reserved.

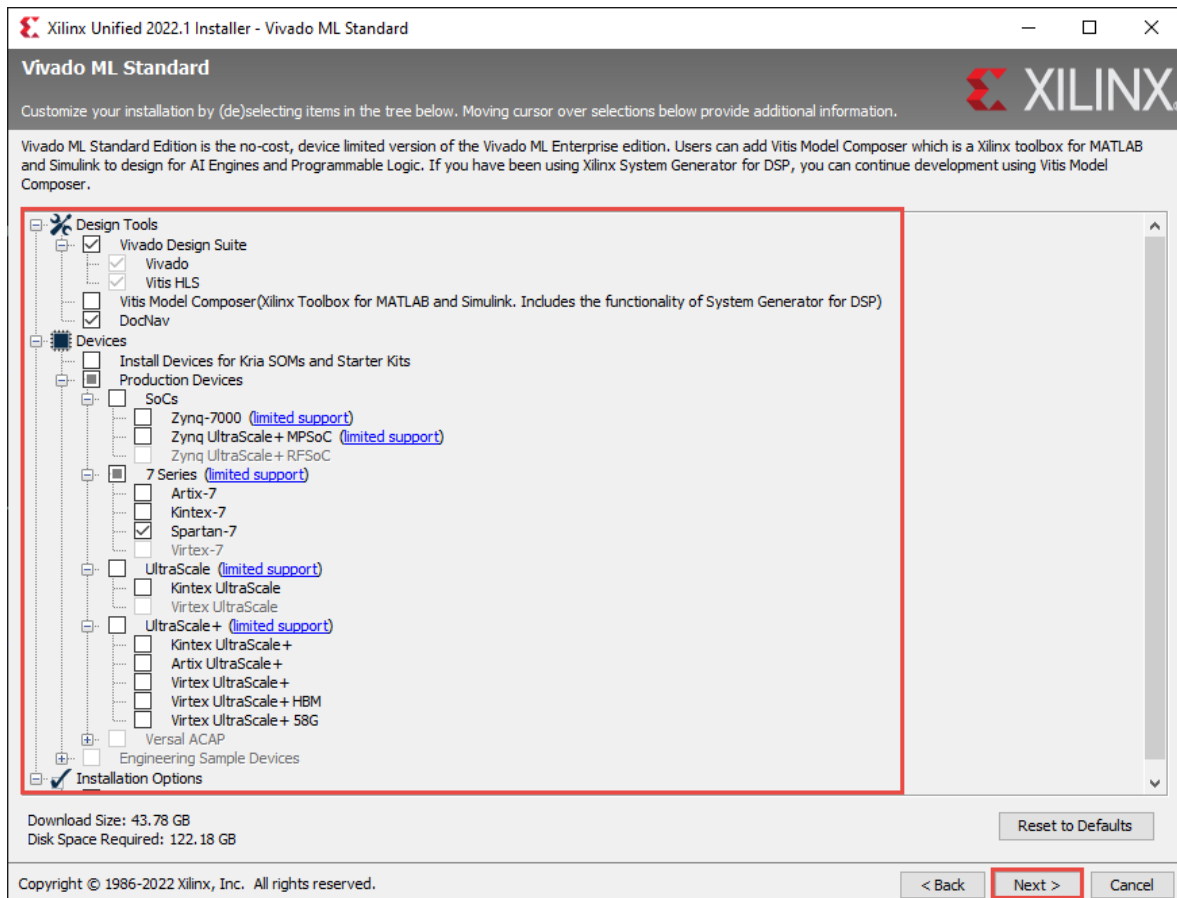
< Back **Next >** Cancel



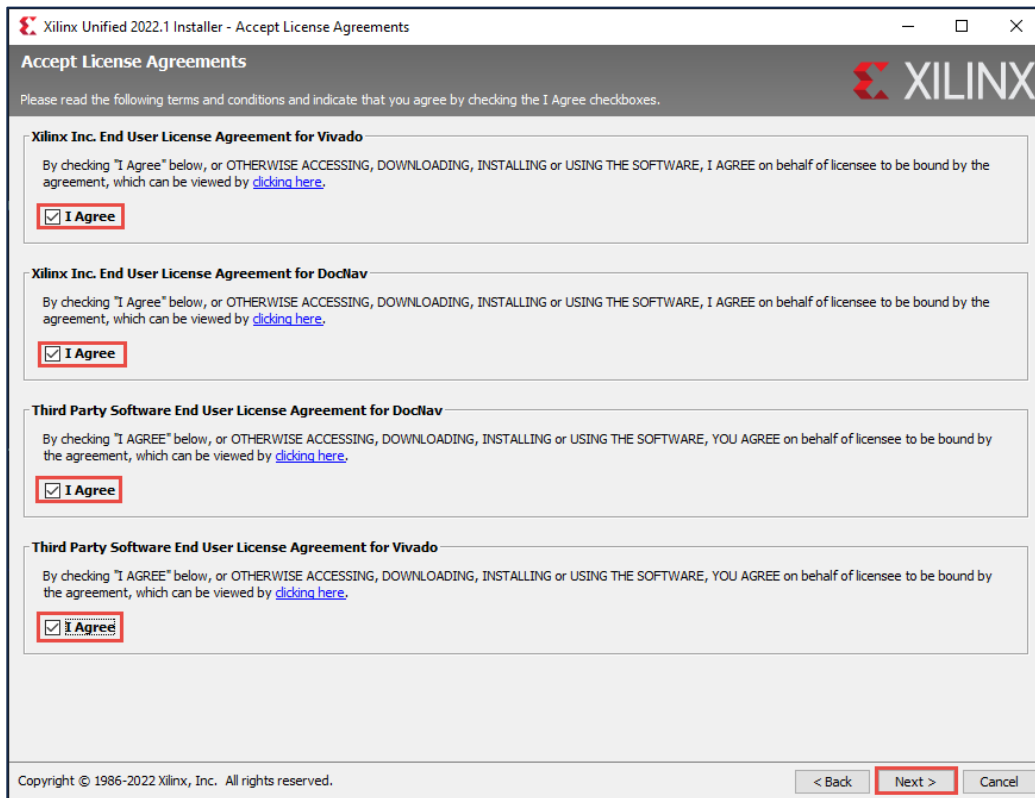
13. Select the Vivado ML Standard option and then Next.



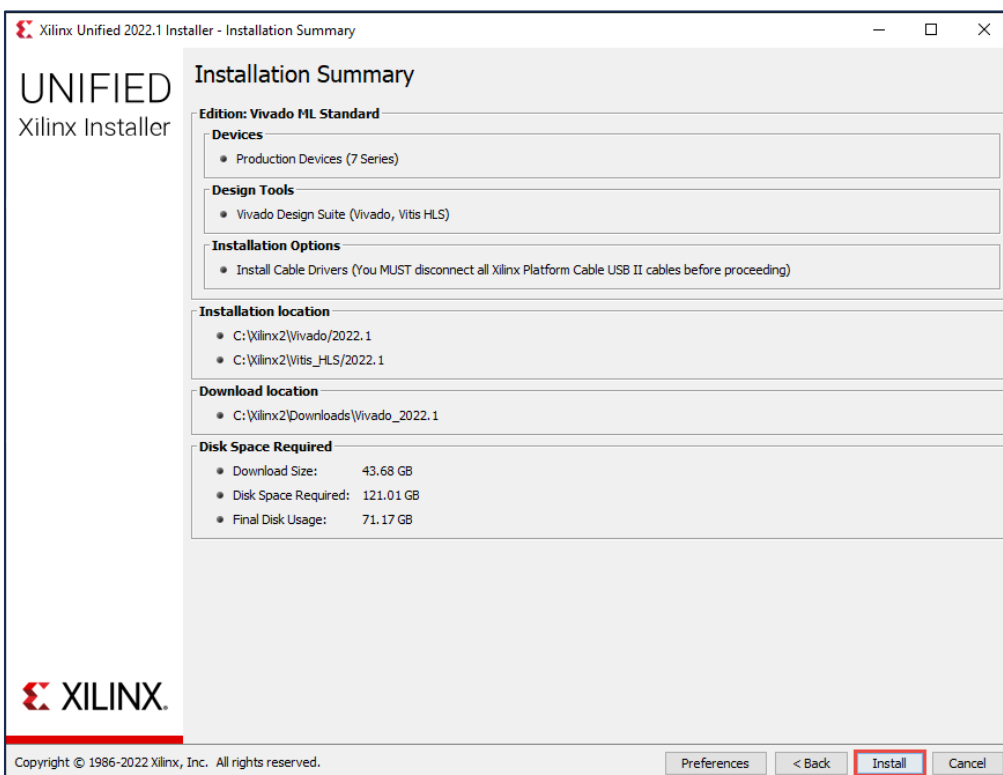
14. Expand each section by clicking on the plus signs and **deselect** as described below. **Deselect** DocNav if you already have it installed and select Next.



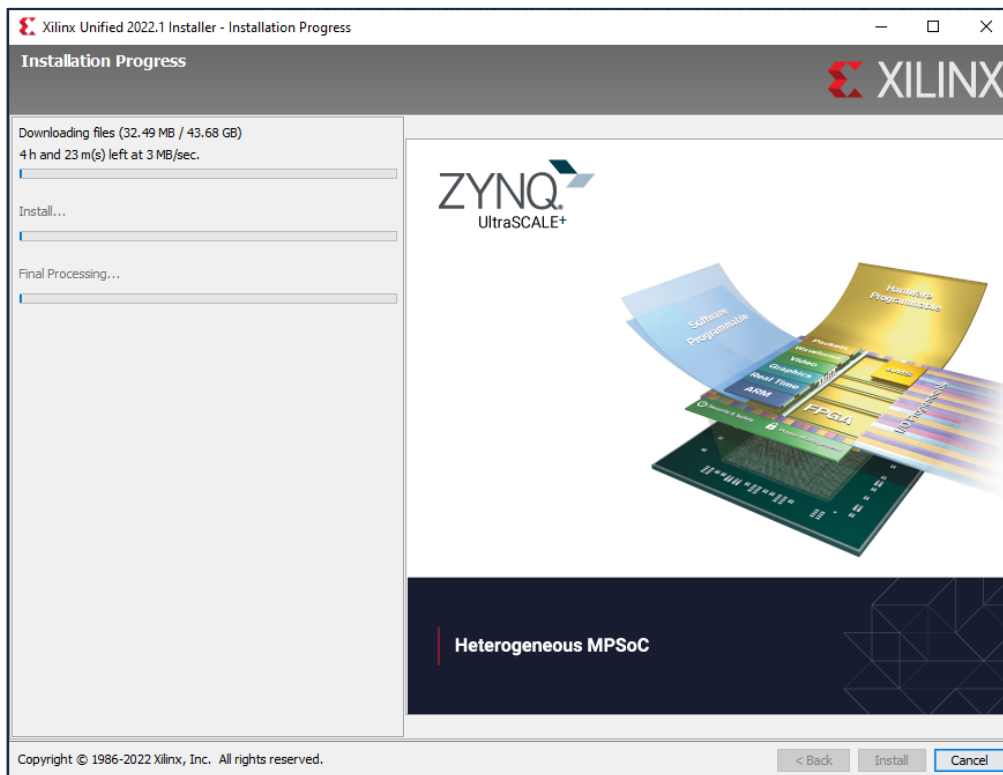
15. Agree to the License Agreements and then select Next. Note: If you are not installing DocNav, you will only see two options.



16. Review the Installation Summary page and then select Install.

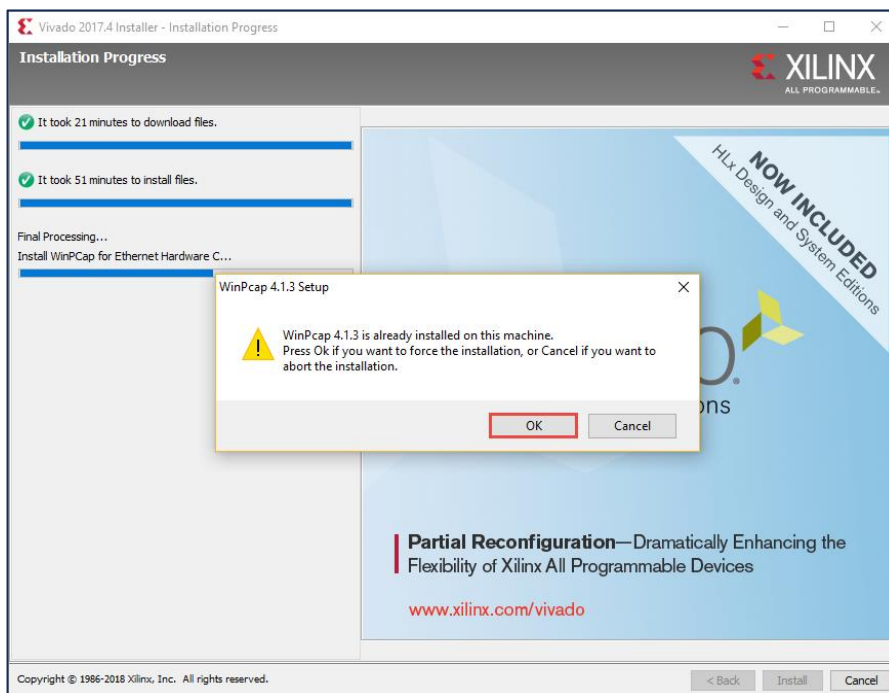


17. Wait for the installation to complete.

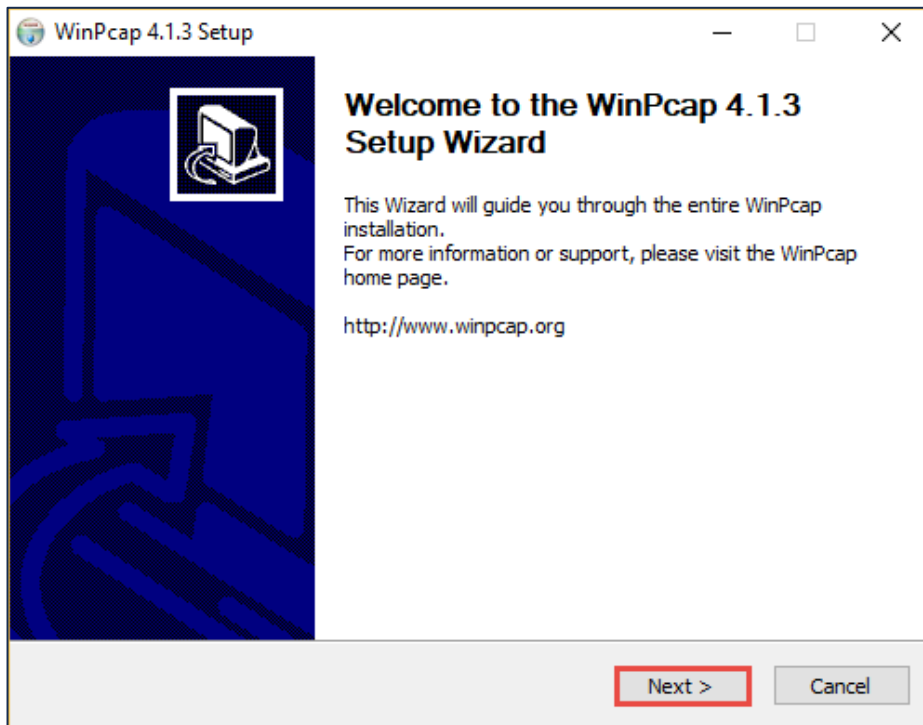


18. Do not use auto update tools if offered through a pop up window.

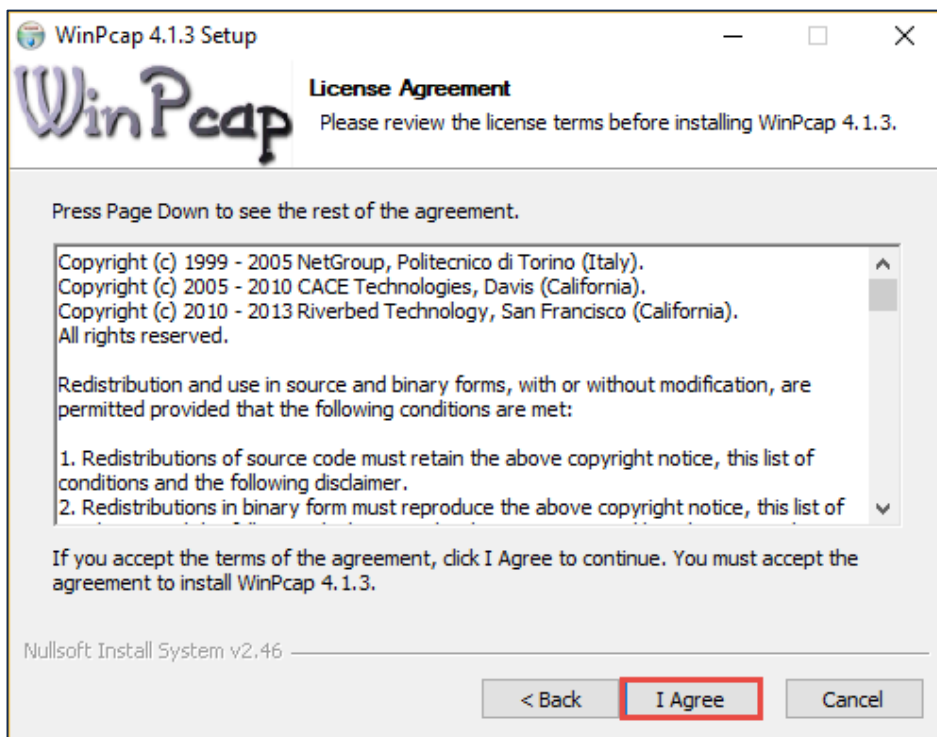
19. Select OK if asked to Force the installation of WinPcap 4.1.3



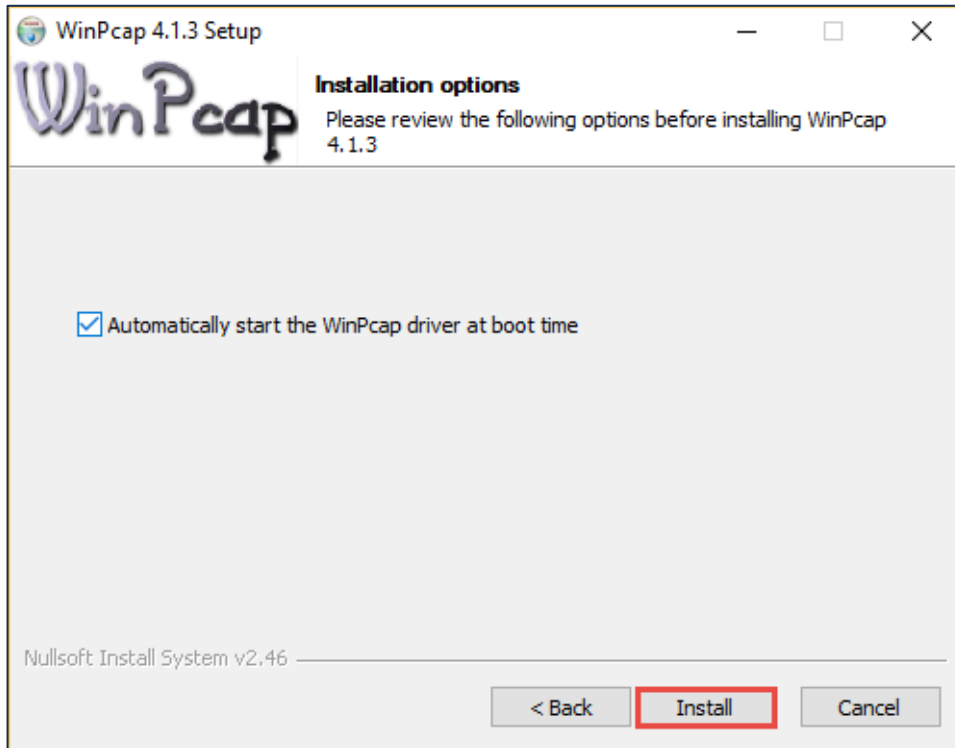
20. Select Next to proceed with the WinPcap 4.1.3 Setup



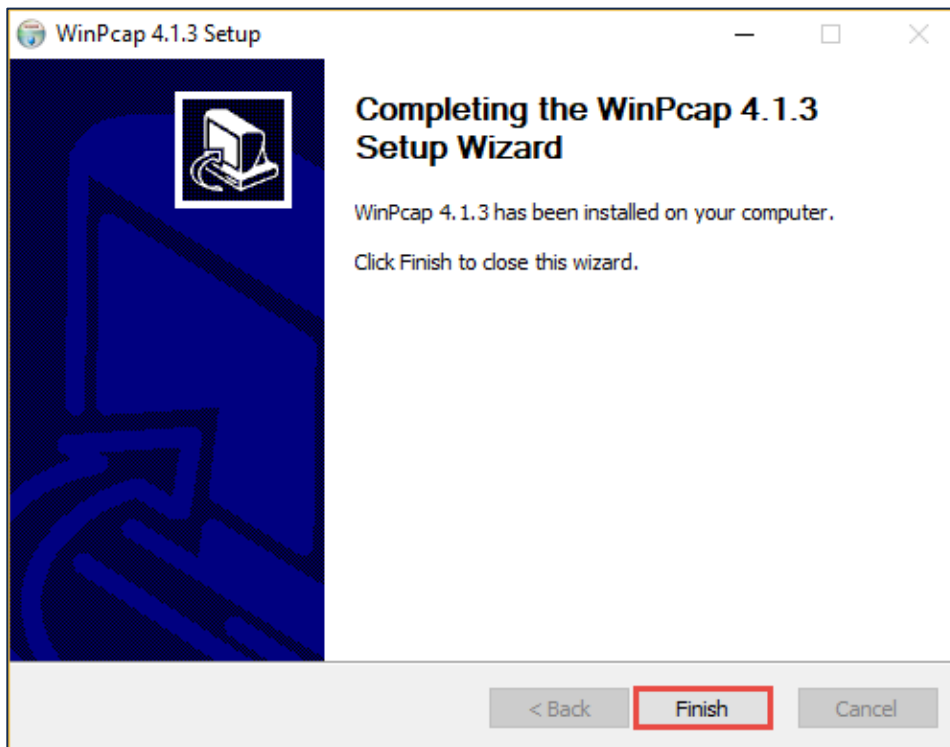
21. Select I Agree



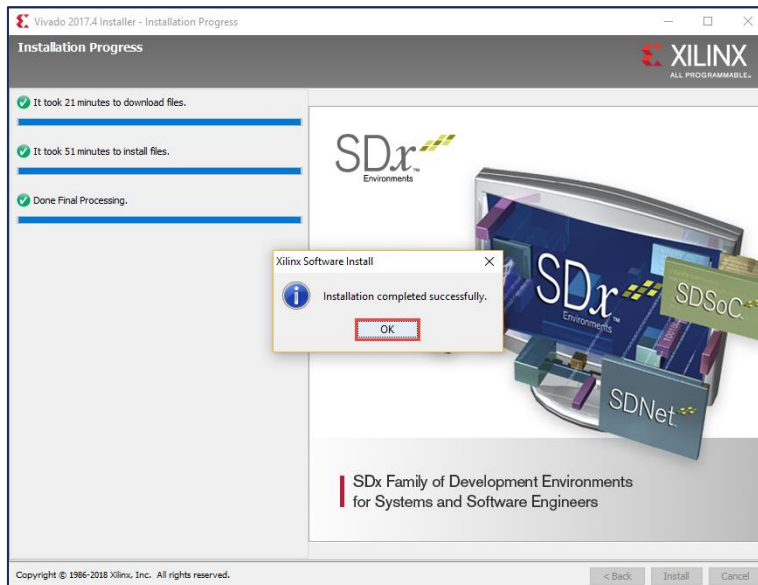
22. Select Install



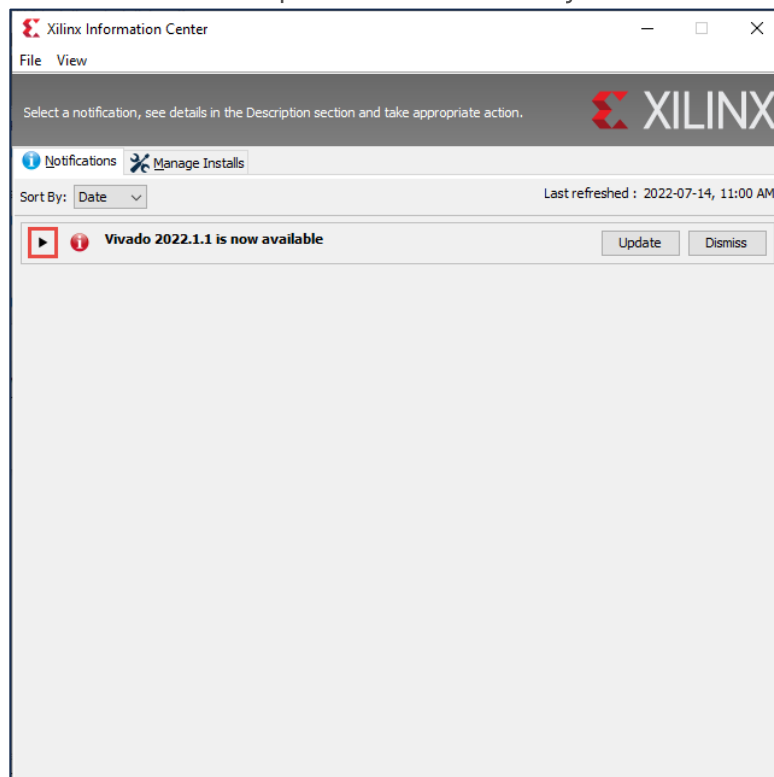
23. Choose Finish to close the installer



24. Choose OK to close the Vivado installer. If you are asked to install a license, note that Vivado will run without a license. Close the license window.



25. You will see the following screenshot after installation is complete. Select the arrow to see if updates are necessary.



26. The files shown were not installed and therefore do not need to be updated. Select Dismiss.



27. Consider removing the installation files in the folder shown to reduce unnecessary files. C:\Xilinx\download\