

PLTW Kite Student Portal Whitelist and Firewall Settings

Whitelist

To ensure your school can properly access the PLTW Kite Student Portal, please add the site below to your school's whitelist.

- *.kiteaai.org

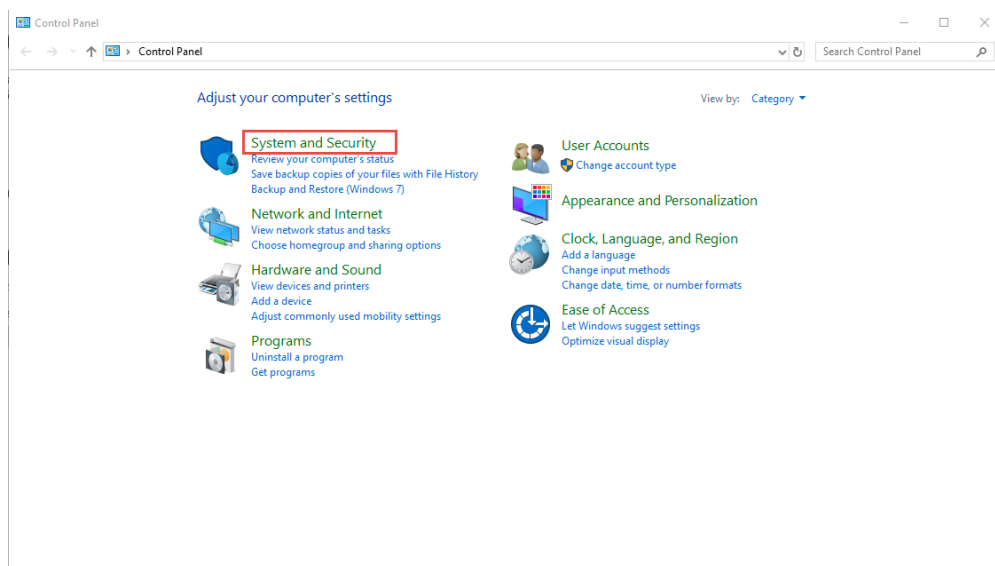
Folder Permissions

Please note students will need Write access to C:\Users\

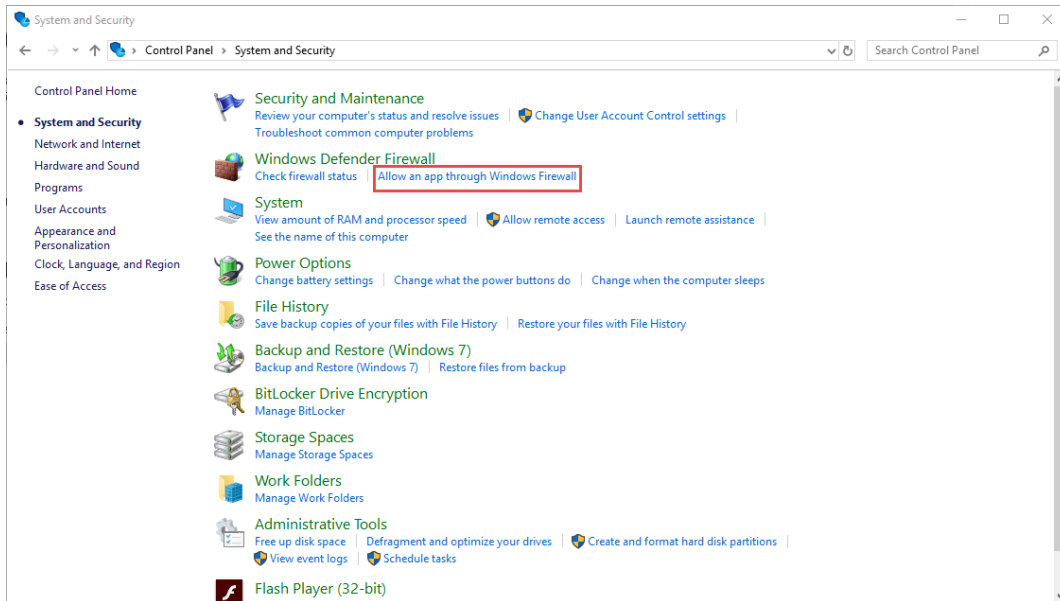
Firewall Settings

Allow the two files below access through the firewall. Instructions for allowing them in the Windows Firewall are below.

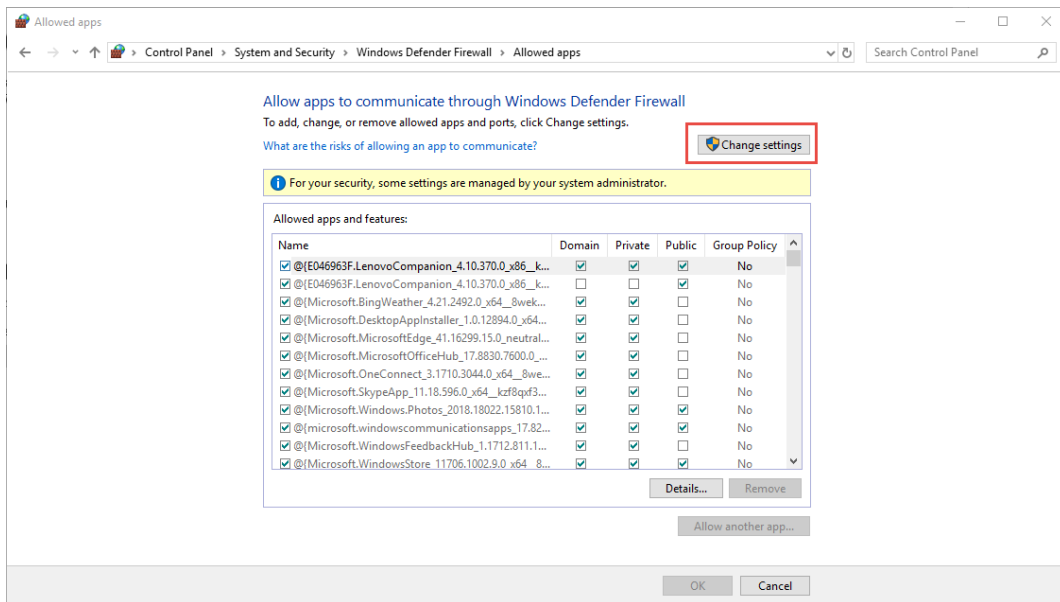
- kitestudentportal.exe
 - kite.exe
1. Open the **Control Panel**.
 2. Select **System and Security**.



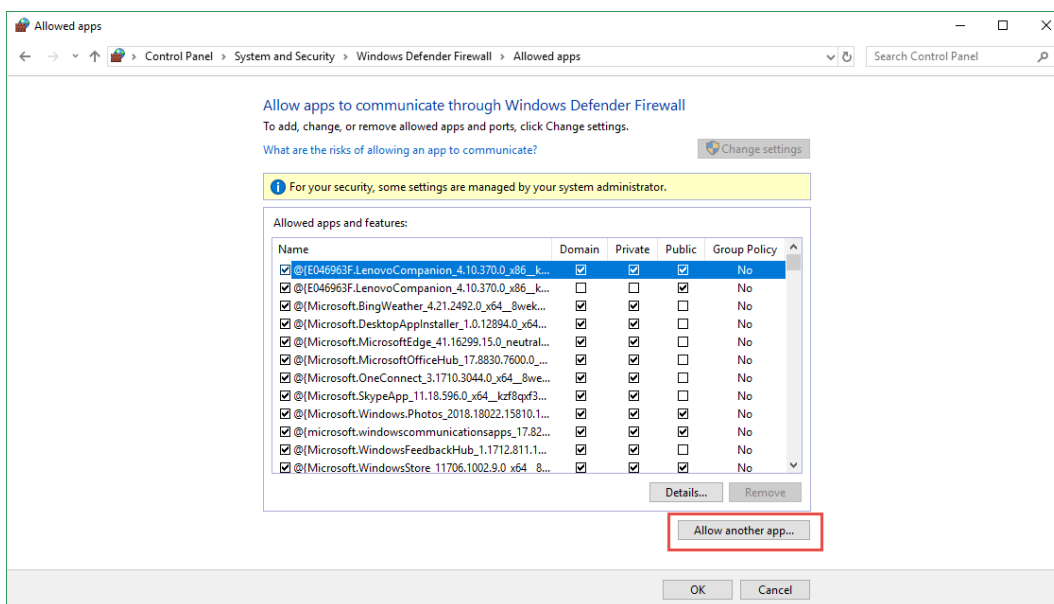
3. Select **Allow an app through Windows Firewall.**



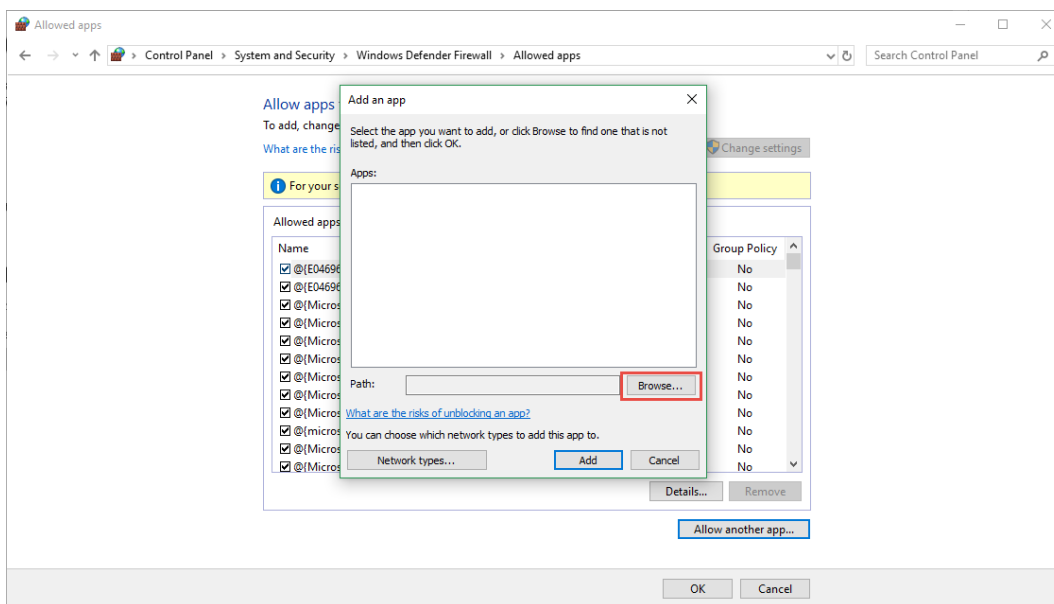
4. Select **Change settings.**



5. Select **Allow another app...**

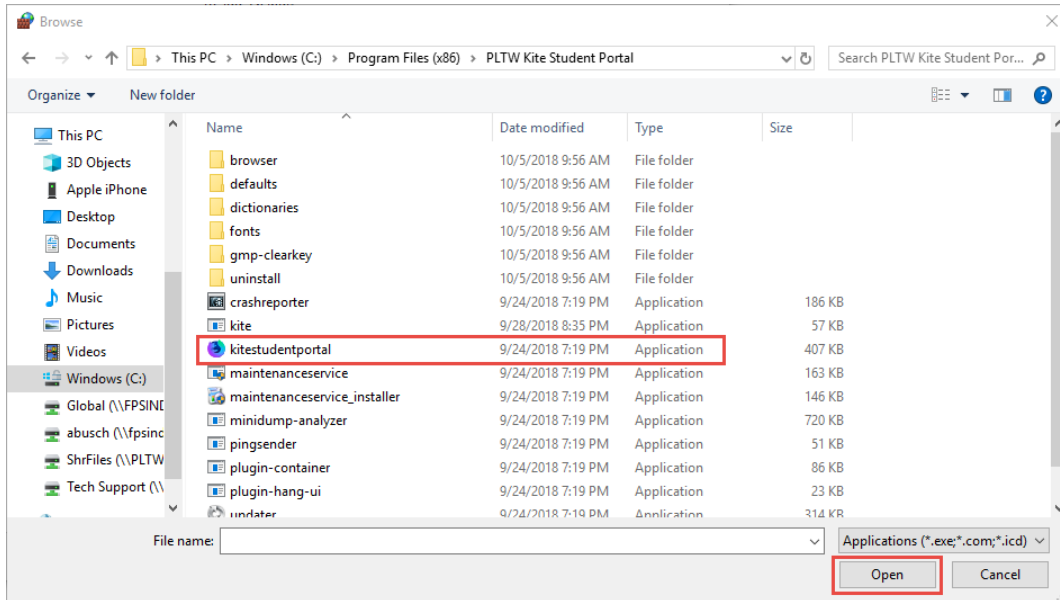


6. In the new window, select **Browse**.

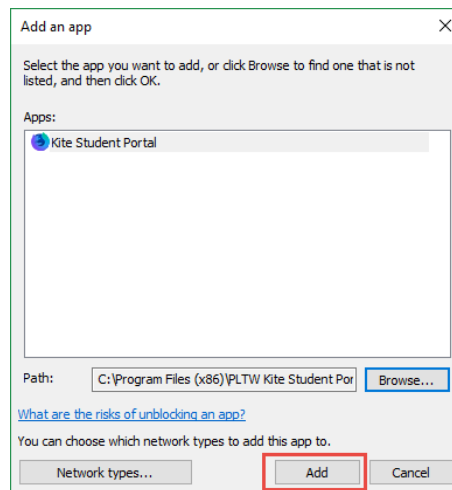


7. Navigate to the following file path: **C:\Program Files (x86)\PLTW Kite Student Portal**.

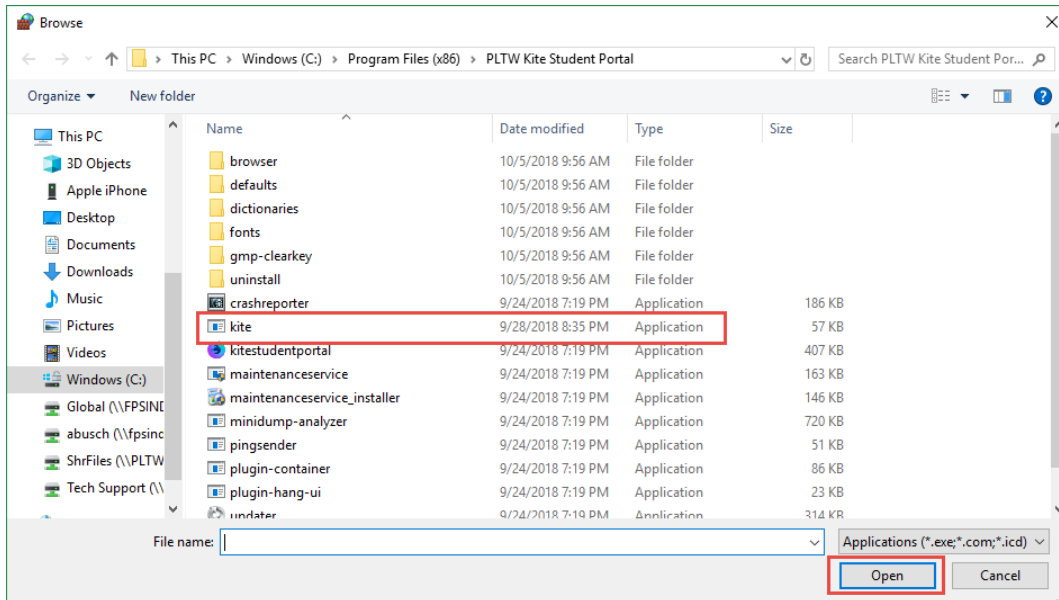
8. Select the **kitestudentportal.exe** file and click **Open**.



9. Click **Add**.



10. Repeat steps 5-9, this time selecting the **kite.exe** file.



11. Both the PLTW Kite Student Portal and Kite should now appear in the Allowed apps area.

