

## PLTW Kite Student Portal Installation Guide for Windows

Welcome to the PLTW Kite Student Portal installation guide for Windows.

---

**Note:** The PLTW Kite Student Portal is supported for both 32-bit and 64-bit Windows® computers.

---

The PLTW Kite Student Portal is what students will use to take the End-of-Course (EoC) Assessment and *Informative Assessments*. The PLTW Kite Student Portal covers the full screen of the test-taking machine, preventing students from accessing outside information during the test.

This installation guide serves as a tool for the individuals responsible for installing the PLTW Kite Student Portal on testing machines before students take assessments.

### Installing the PLTW Kite Student Portal for Windows

**Note:** Students will need Write access to C:\Users\\AppData

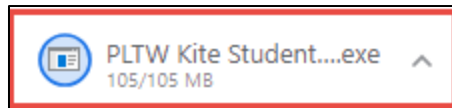
You can keep the C: Drive hidden but students will need Write permissions to the mentioned folder.

To install the PLTW Kite Student Portal, perform the following steps:

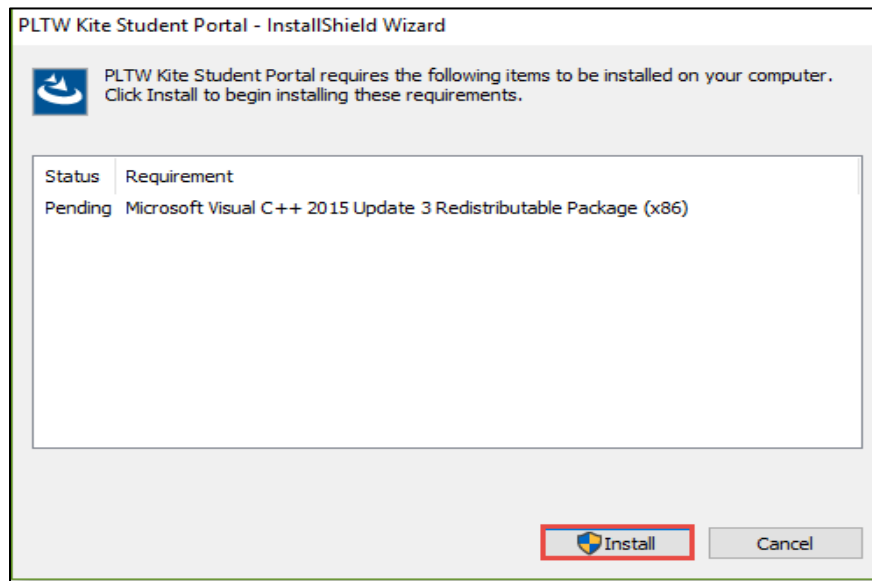
1. Choose the installation link.
  - For Windows EXE Please click – [Here](#)
  - For Windows MSI Please click – [Here](#)

**Note:** The instructions provided below are for the EXE. Schools looking for mass deployment across their school should use the MSI.

2. The file will begin downloading.

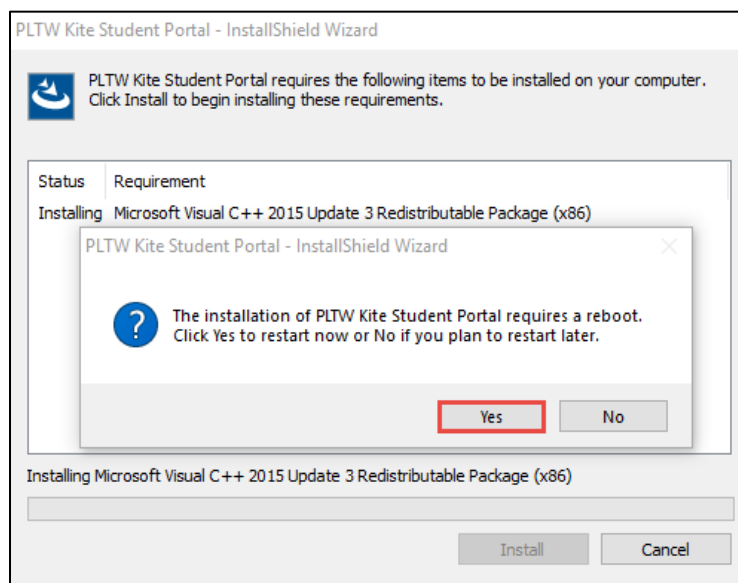


**Note:** If using the .exe installer and Visual C++ redistributable is not up to date, this screen will appear and prompt an update. Please click **Install**.

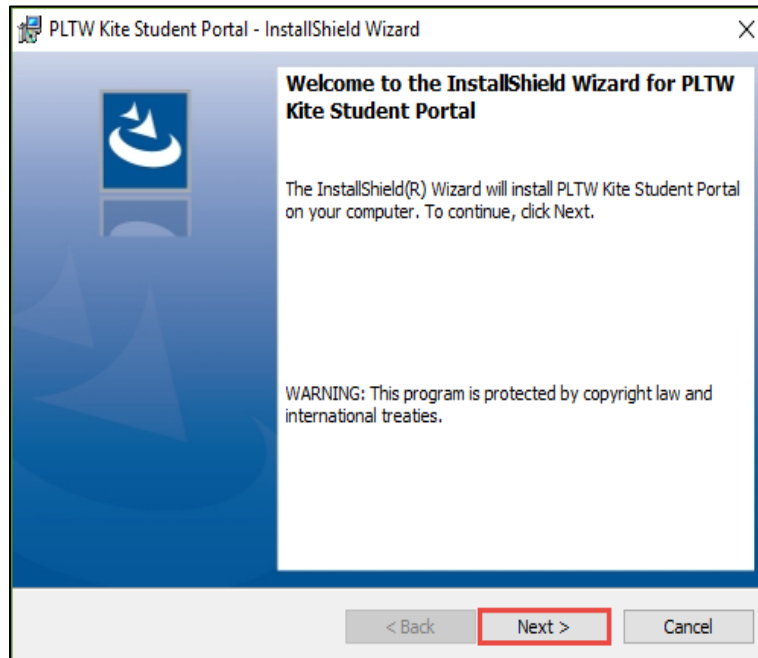


3. You will need to reboot your computer. Please click **Yes**.

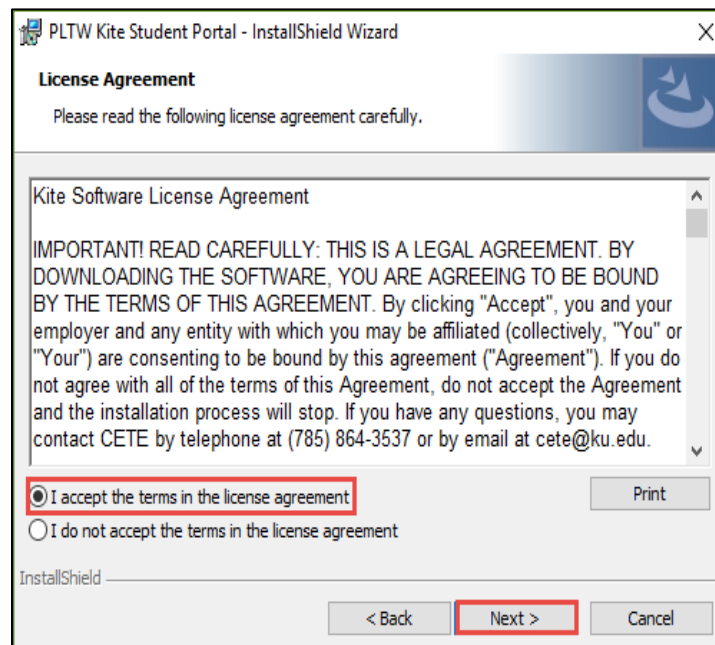
**Note:** You may need to restart the installer once the computer has rebooted.



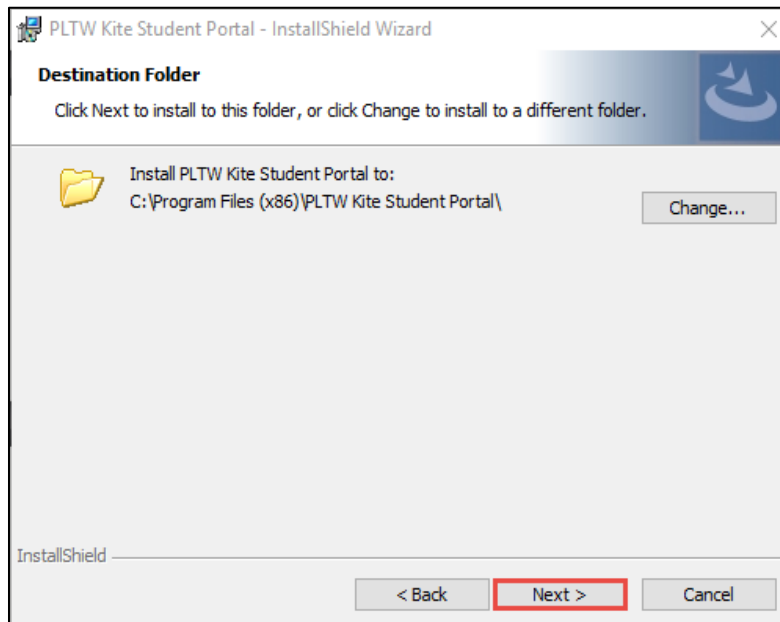
4. On the InstallShield Wizard dialog box, click **Next**.



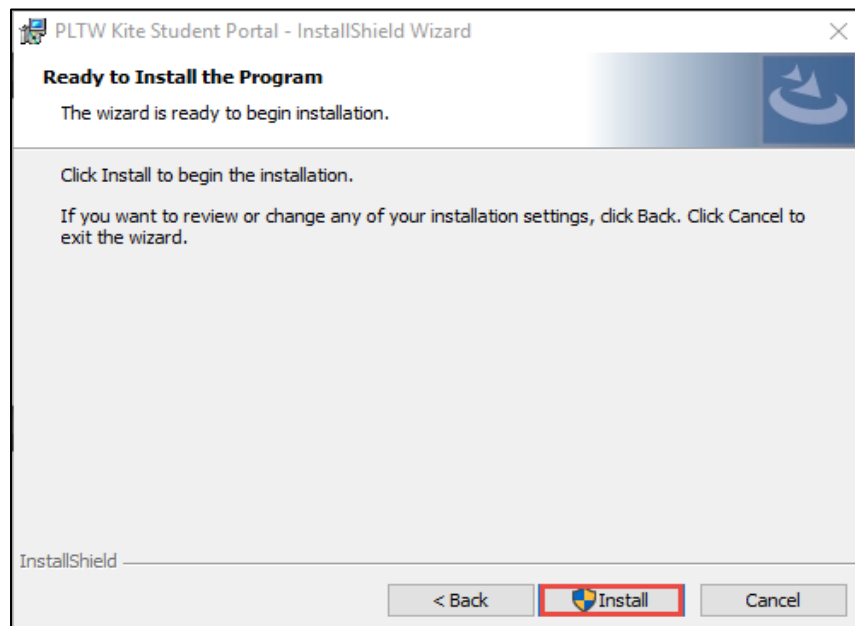
5. On the License Agreement window, click **I accept the terms in the license agreement**. Click **Next**.



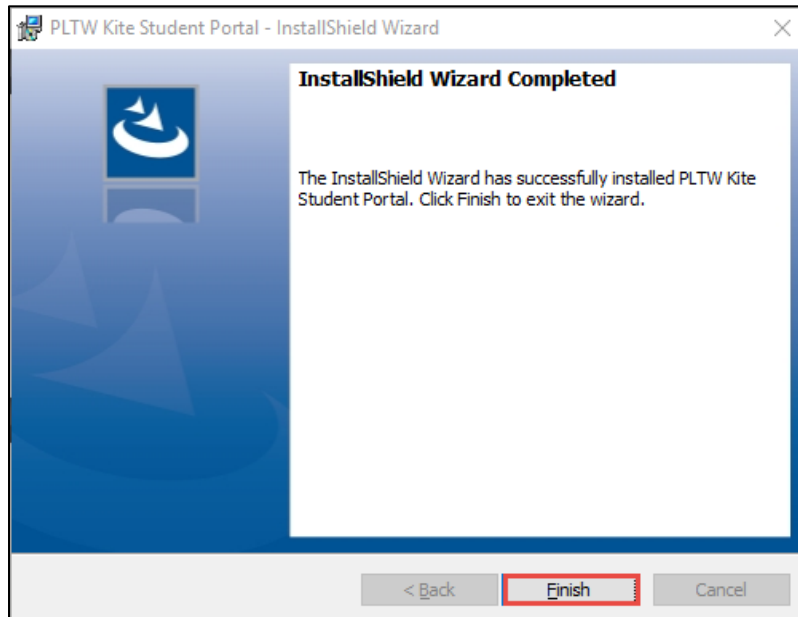
6. Click **Next**.



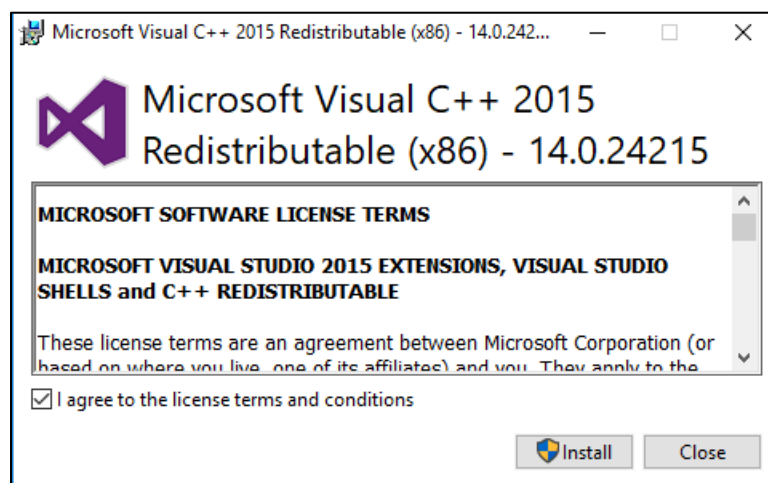
7. To begin the PLTW Kite Student Portal installation, click **Install**.



8. Click **Next**.
9. Once the installation is complete, click **Finish**.



**Note:** If using the .msi installer and Visual C++ redistributable is not up to date, this screen will appear and prompt an update.



## Accessing PLTW Kite Student Portal Software

For more information about using the PLTW Kite Student Portal Software, refer to the PLTW Kite Student Portal User Manual.

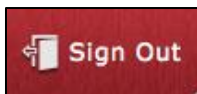
## Starting the PLTW Kite Student Portal Software

Once the PLTW Kite Student Portal software has been successfully installed, you can access it by an icon on your computer desktop or through the Start menu.

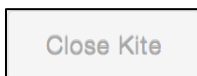
## Closing the PLTW Kite Student Portal Software

To close the PLTW Kite Student Portal software, perform the following steps\:

1. Click the **Sign Out** button.



2. Click the **Close Kite** button.



## Troubleshooting

If you encounter any errors while using the PLTW Kite Student Portal software, you can always contact the PLTW Solution Center at 877.335.7589 or [solutioncenter@pltw.org](mailto:solutioncenter@pltw.org).

### **After exiting the PLTW Kite Student Portal software (Windows 8.1 and 10), the process does not quit.**

Sometimes, after exiting the PLTW Kite Student Portal software (in Windows 8.1 and 10), the process will continue to run in the background. To close the process, open the Task Manager and end the process.