

Installation Guide for Robocell


Updated: 7/2/2020

Product Key: To obtain the Product Key, please email the Solution Center at technicalsupport@pltw.org

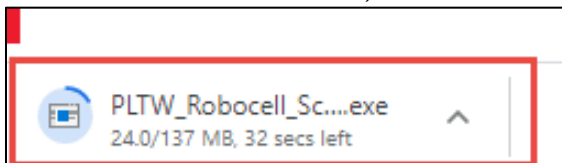
**** Note:** The Product Key that will be provided from the Solution Center will only work on the version of Robocell that is listed below. The Product Key will not work on any other version of Robocell

Procedure

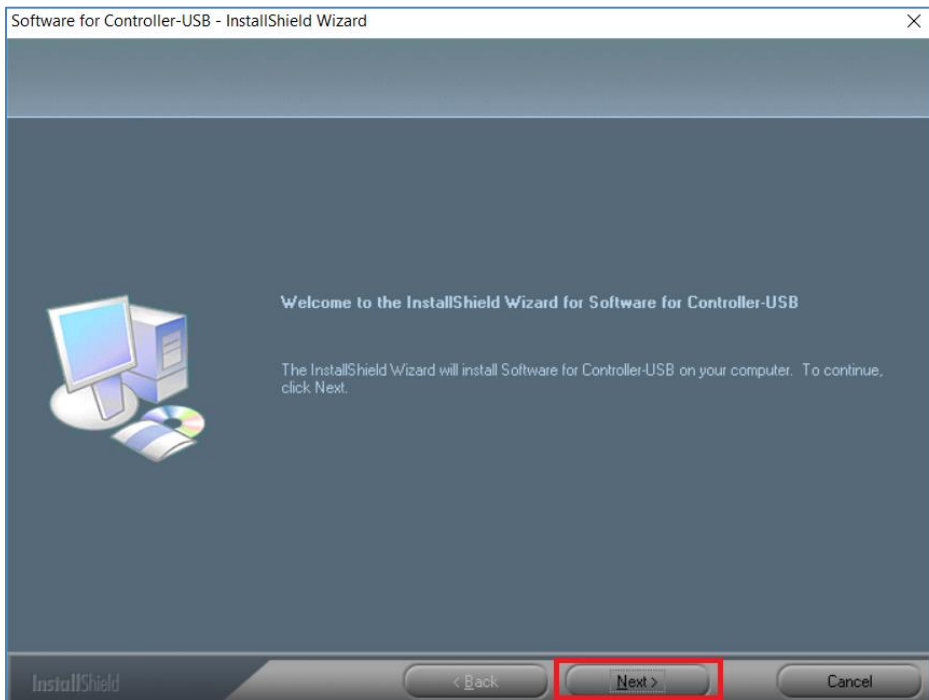
1. Click the link to download the software
<http://intelitekdownloads.com/PLTW/ROBOCELL/>
2. Click Download for the **Robocell_Scorbase_Setup_7.0.9.8.exe** version

Filename	Download	Filetype	Filesize
PLTW_Robocell_Scorbase_Setup_7.0.9.8.exe	 DOWNLOAD	file - exe	143615432
Robocell_Scorbase_Setup_7.0.14.1.exe	 DOWNLOAD	file - exe	177820960
ViewFlex+3.3+build+14.zip	 DOWNLOAD	file - zip	573081910

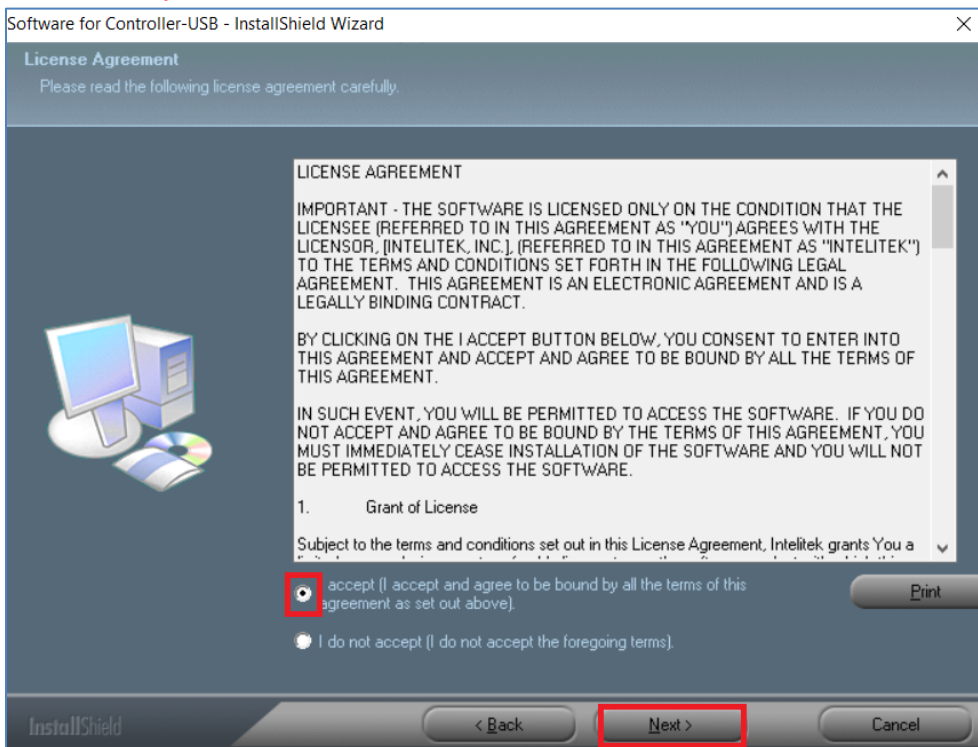
3. Once the download is done, select it in the lower left corner to start the install.



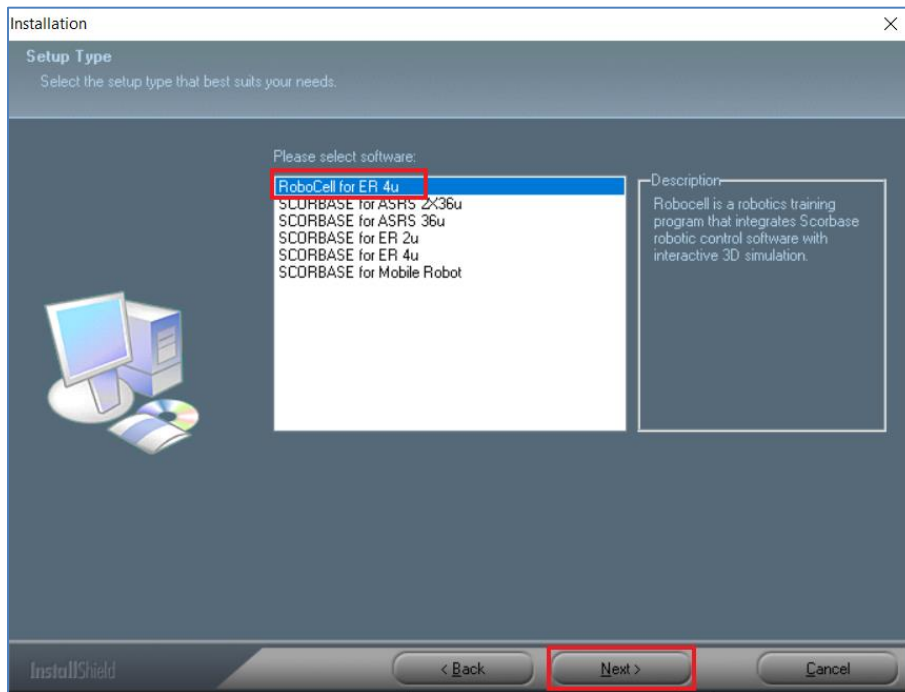
4. Select **Next** on the install wizard.



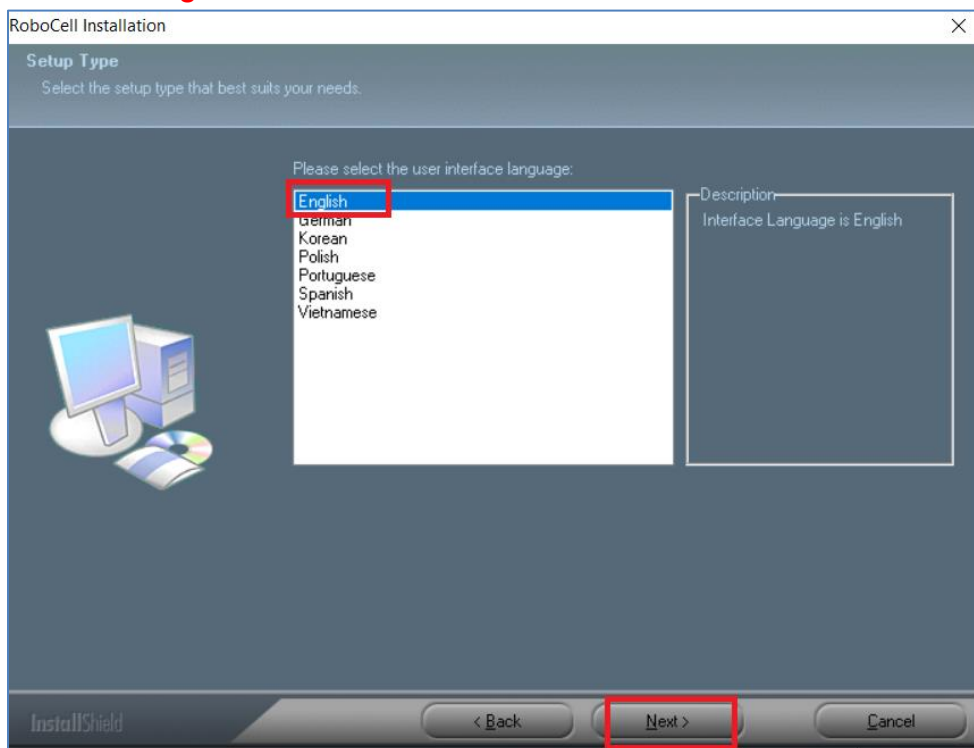
5. Select **I accept** and then **Next**.



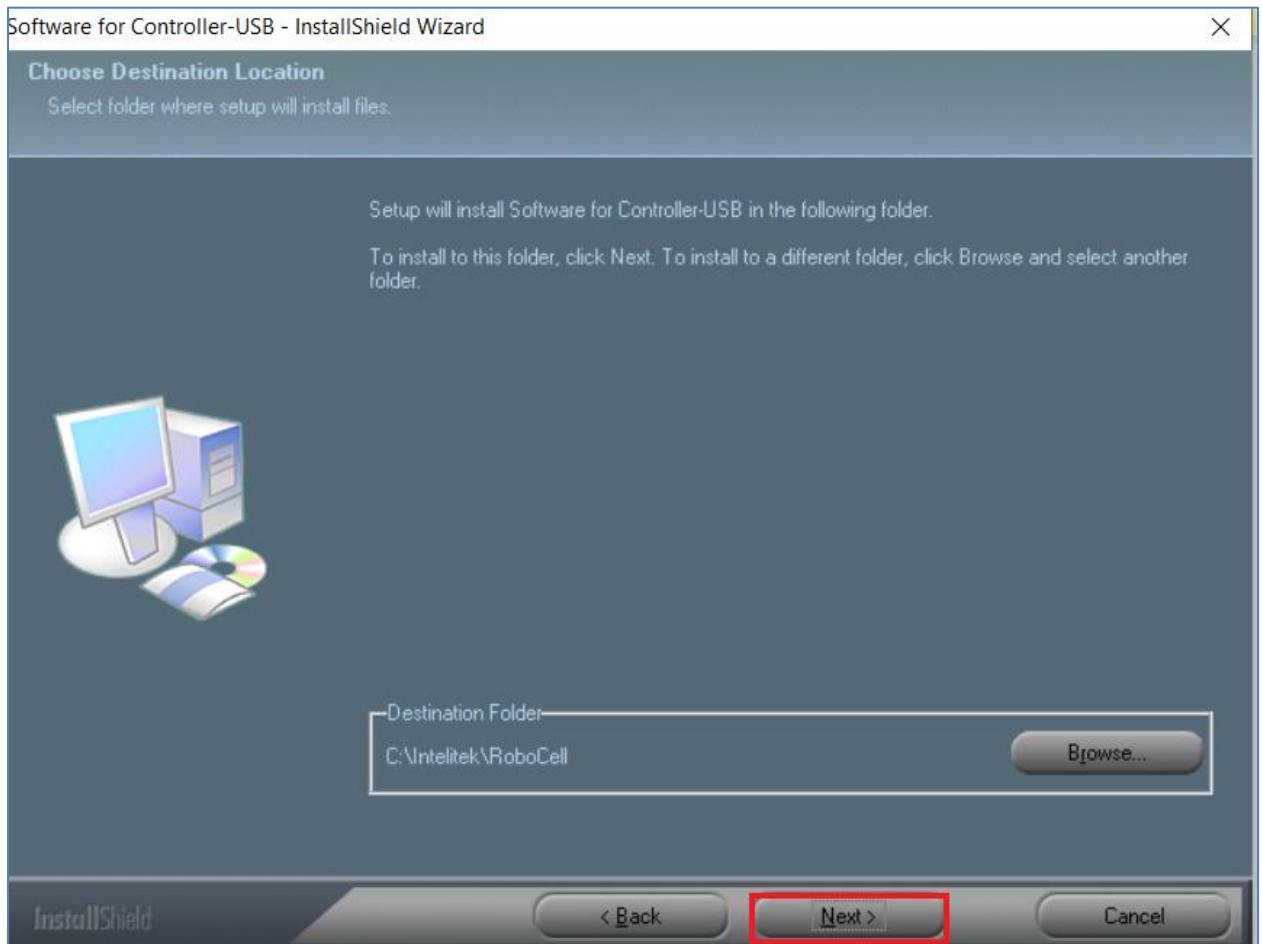
6. Select **RoboCell for ER 4u** and then select **Next**.



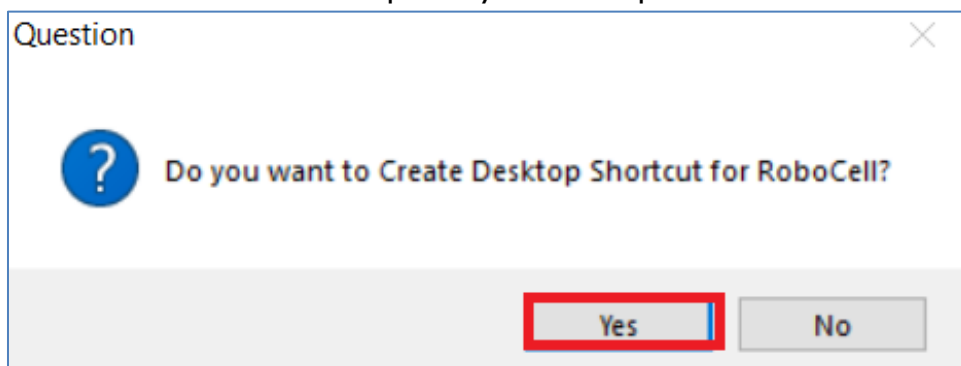
7. Make sure **English** is selected, and then select **Next**.



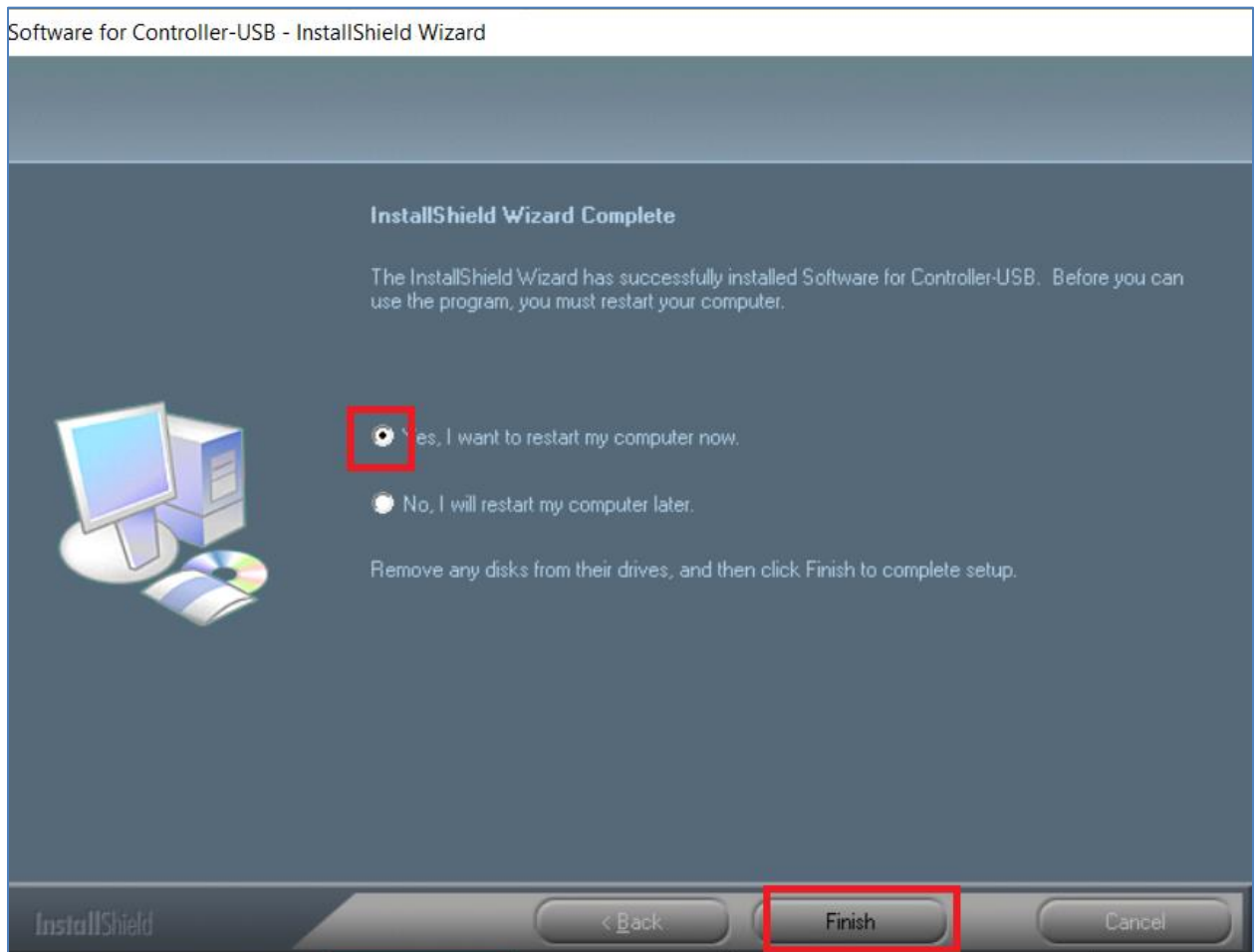
8. Double check the file path, then select **Next**.



9. For Robocell shortcut to be put on your desktop select **Yes**



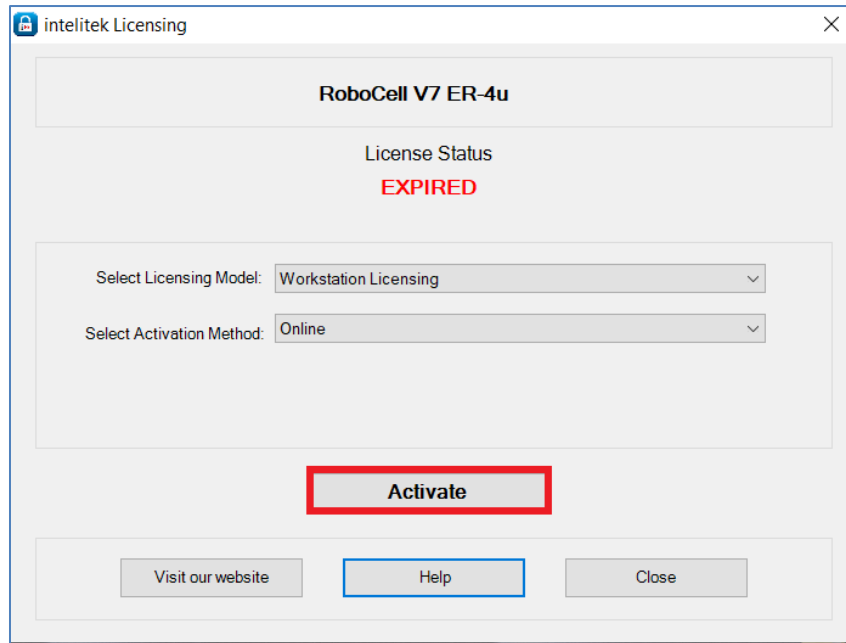
10. Select **Yes, I want to restart my computer now**, then select **Next**.



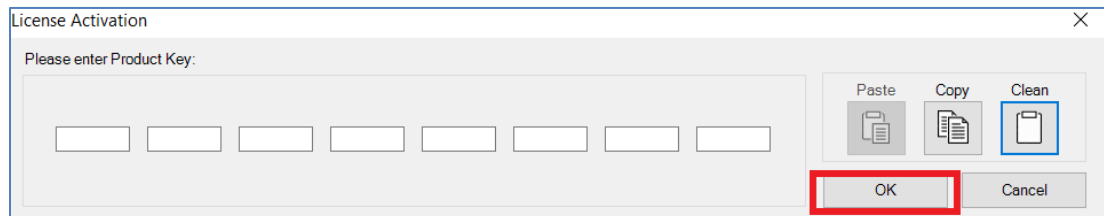
*****If using imaging software, do not license the software. Gather the image, and deploy it. License the software after all the machines are imaged. DO NOT license the Master Image.*****

12. After you restart your computer, right-click on RoboCell and select 'Run as Administrator'.

13. Select **Activate** to add the license key



14. Enter in the Product Key then select **Ok**



15. Select **Ok**

