

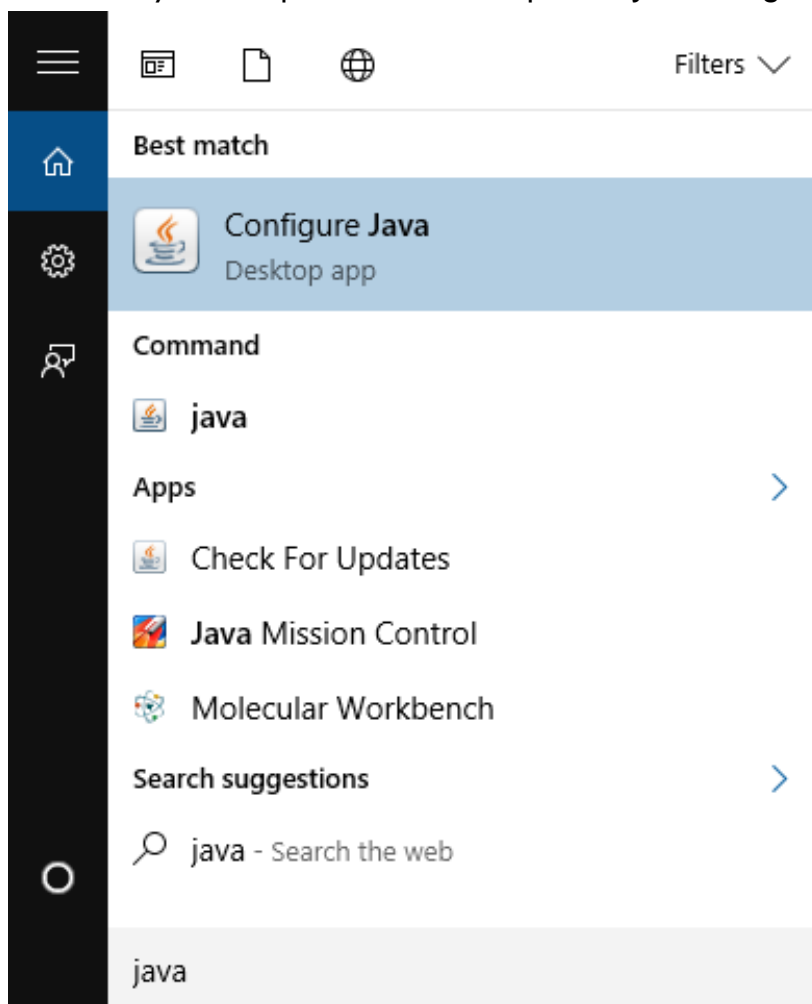
Installation Guide for Rocket Modeler

Note: Rocket Modeler will only run in Internet Explorer with Java 8

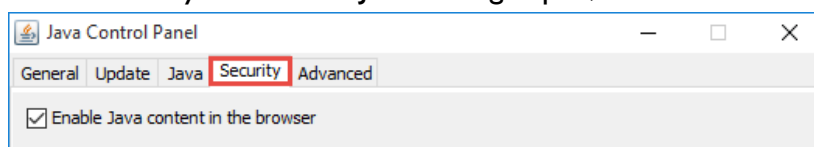
Updated: 5/8/2018

Procedure

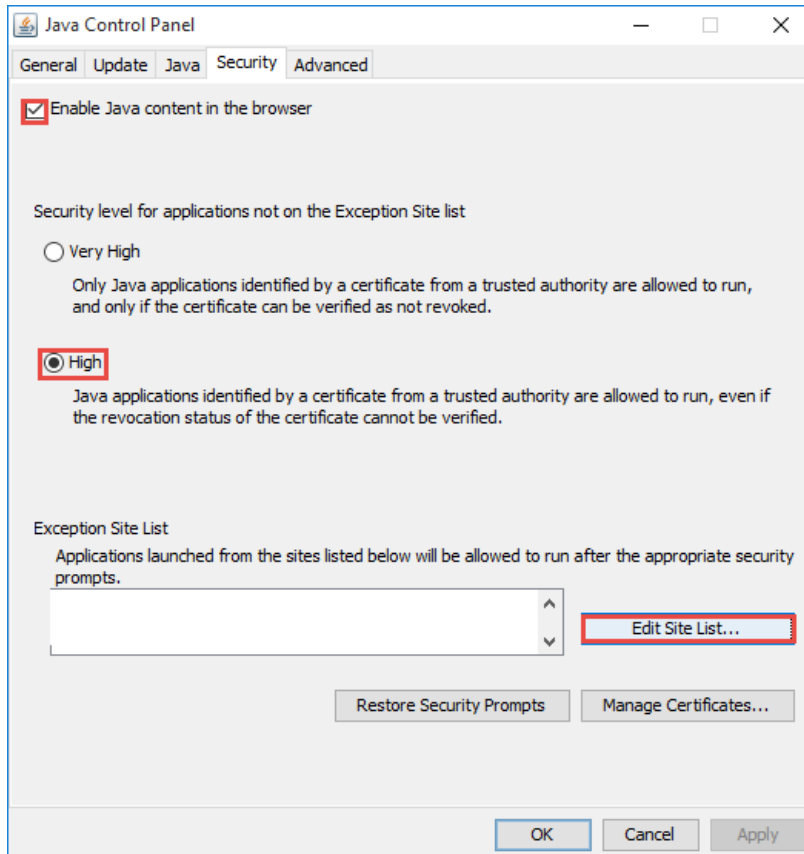
- I. Before running the simulator, you will need to modify the Java settings on your machine.
 - a. On your computer, locate and open the Java settings.



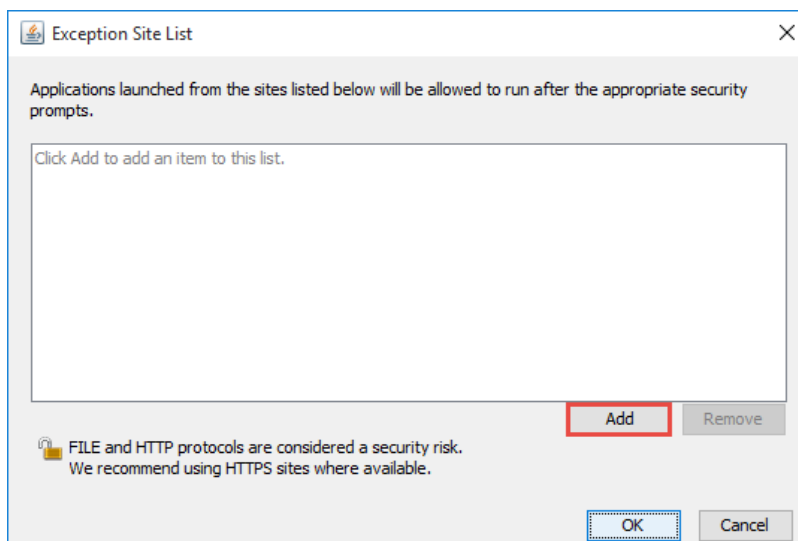
- b. Once you have the Java settings open, select the **security** tab on the top.



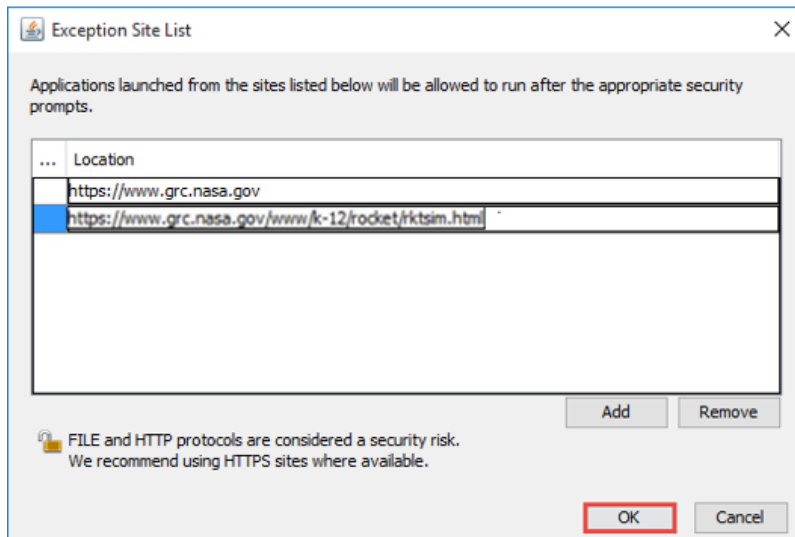
- c. On the Java **security** tab, you will then need to check the **Enable Java Content in the browser** checkbox, select **High** for the security level and select the **Edit Site List** button under Exception Site List.



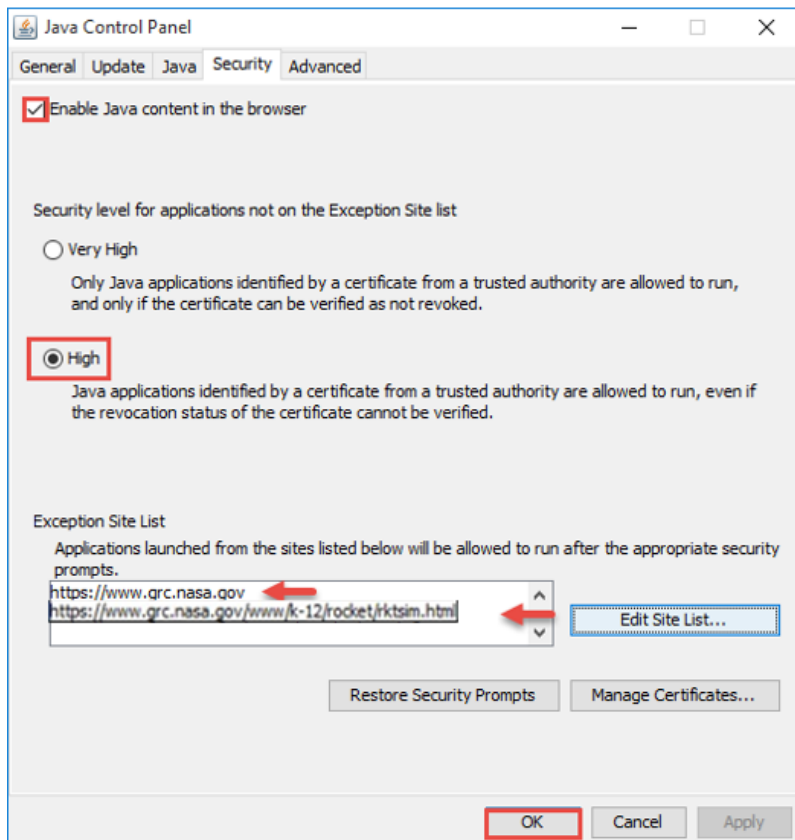
- d. On the Exception Site List box that opens, Select **Add** twice.



- e. Next, type the following URLs into each line:
“https://www.grc.nasa.gov/WWW/k-12/airplane/rktsim.html” and
“https://www.grc.nasa.gov” then select **OK**.



- f. Verify your selections were input correctly, and select **OK** to save your changes.



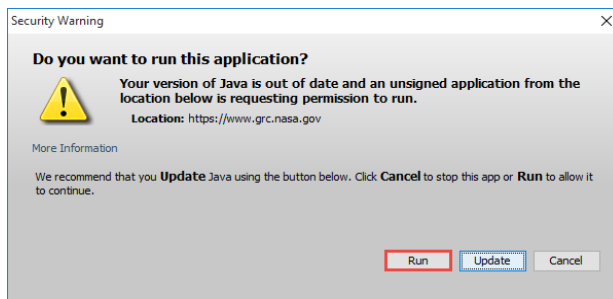
2. Now that your Java settings have been updated, you will be able to run the simulator.

a. Open the simulator by going to the following URL:

<https://www.grc.nasa.gov/WWW/k-12/airplane/rktsim.html>

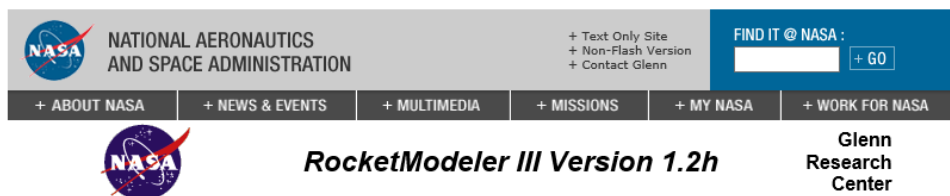
Note: This website will only work in Internet Explorer

b. If prompted to allow Java, select **Run**



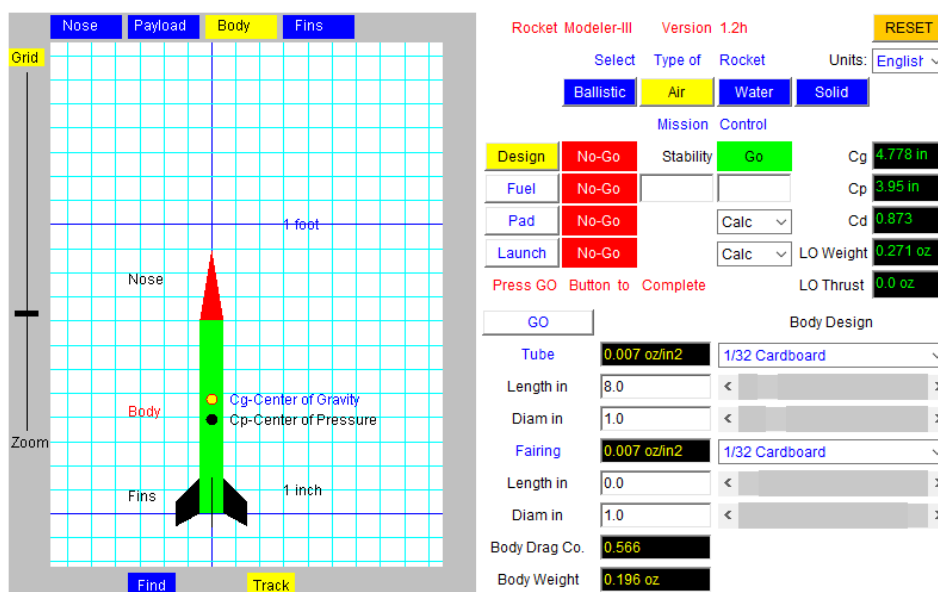
c. Rocket Modeler will now run in the browser, we recommend bookmarking this page for easier future access.

<https://www.grc.nasa.gov/WWW/k-12/airplane/rktsim.html>



This is a beta 1.2h version of the **RocketModeler III** program. You are invited to participate in the beta testing. If you find errors in the program or would like to suggest improvements, please send an e-mail to Thomas.J.Benson@nasa.gov. The [RocketModeler II](#) and the original [RocketModeler](#) program, written by Eric Bishop, are also still available, if you prefer older versions of the program.

Due to IT security concerns, many users are currently experiencing problems running NASA Glenn educational applets. There are [security settings](#) that you can adjust that may correct this problem.



Rocket Modeler-III Version 1.2h [RESET]

Select Type of Rocket Units: English

Ballistic **Air** Water Solid

Mission Control

Design	No-Go	Stability	Go	Cg	4.778 in
Fuel	No-Go			Cp	3.95 in
Pad	No-Go	Calc		Cd	0.873
Launch	No-Go	Calc		LO Weight	0.271 oz
Press GO Button to Complete				LO Thrust	0.0 oz

GO

Body Design

Tube	0.007 oz/in ²	1/32 Cardboard
Length in	8.0	< >
Diam in	1.0	< >
Fairing	0.007 oz/in ²	1/32 Cardboard
Length in	0.0	< >
Diam in	1.0	< >
Body Drag Co.	0.566	
Body Weight	0.196 oz	

RocketModeler III