

Installation Guide for Fly To Learn by X-Plane

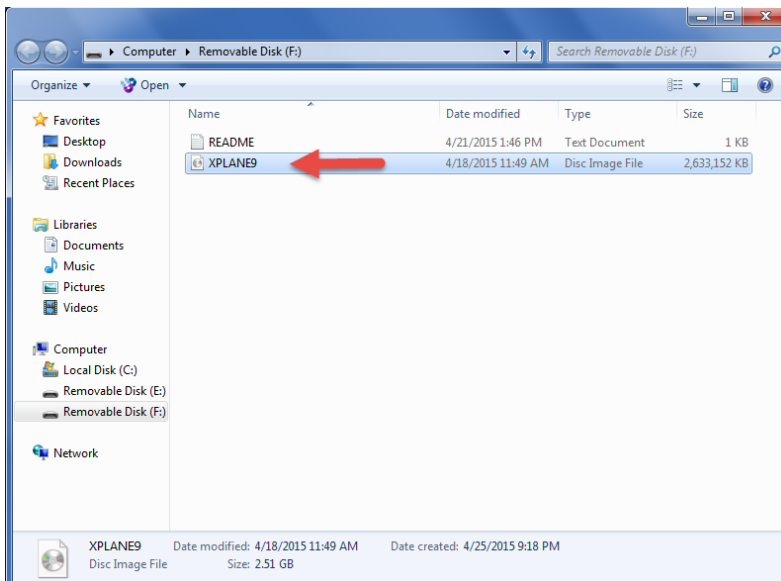
Updated: 4/19/2017

Note: Fly To Learn is an ISO Image. You must install the following ISO imaging software before you begin this installation if you are using Windows 7.

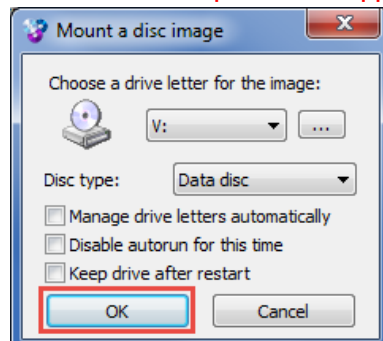
Please see the Installation Guide Video here: <http://youtu.be/96fpdlQU9WU>

Procedure- Install Fly to Learn by X-Plane

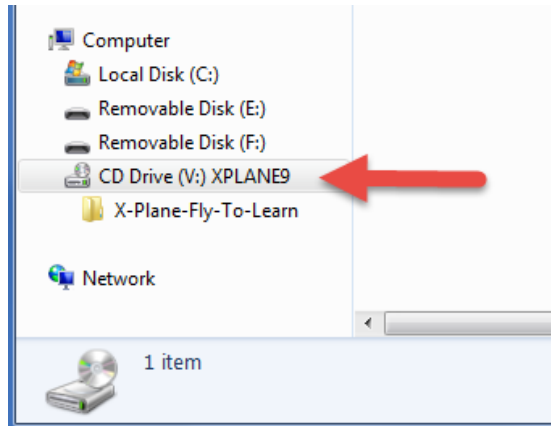
1. Insert the Fly to Learn Thumb Drive
2. Double click **XPLANE9.iso**



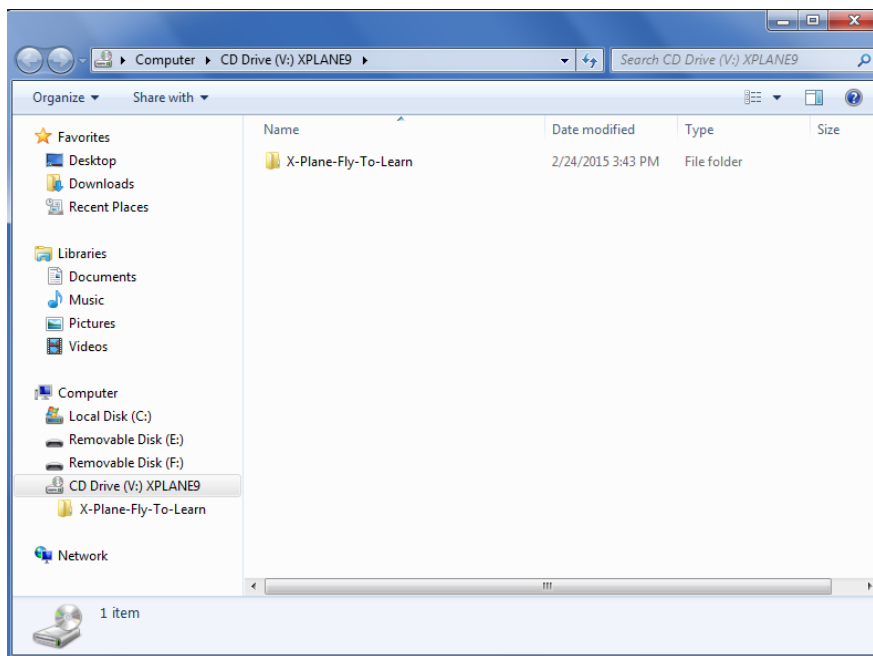
- a. Select **OK**, unless drive V: is already occupied.
**** Note: This step will not happen on Windows 8 machines. ****



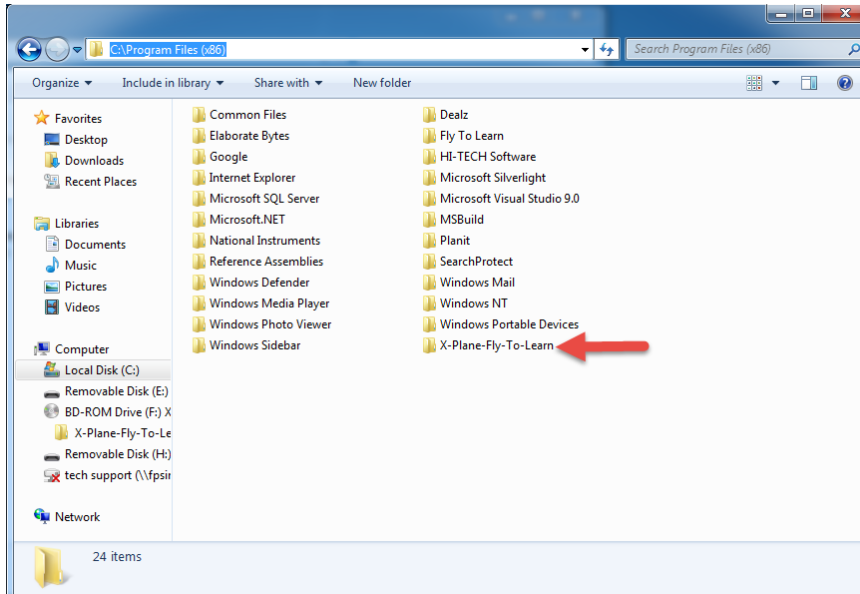
- b. This should now mount to a virtual DVD drive



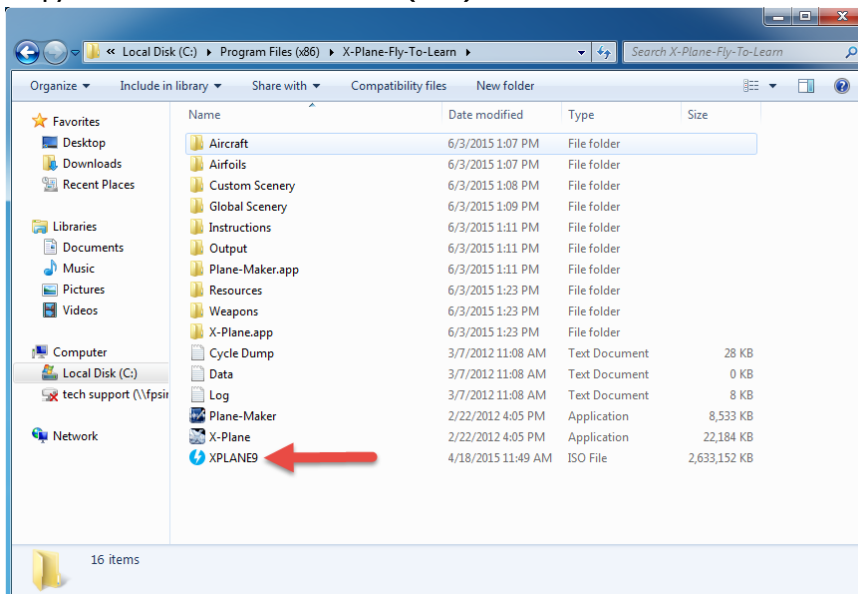
3. Go to the mounted .iso file and open it



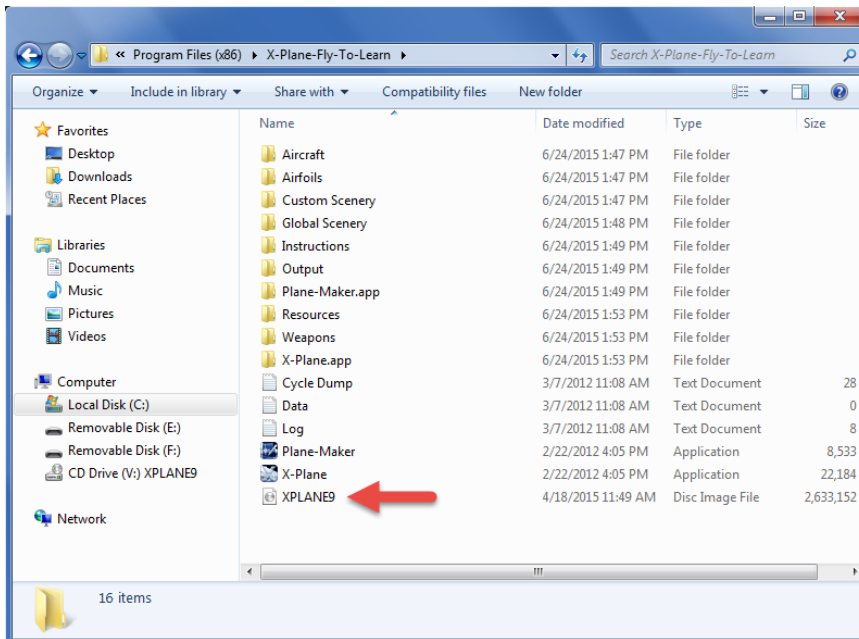
4. Open **C:\Program Files (x86)** in a separate window.
5. Copy the **entire folder** titled **X-Plane-Fly-To-Learn** from the above mounted drive in Step2b into the **C:\Program Files (x86)** location.



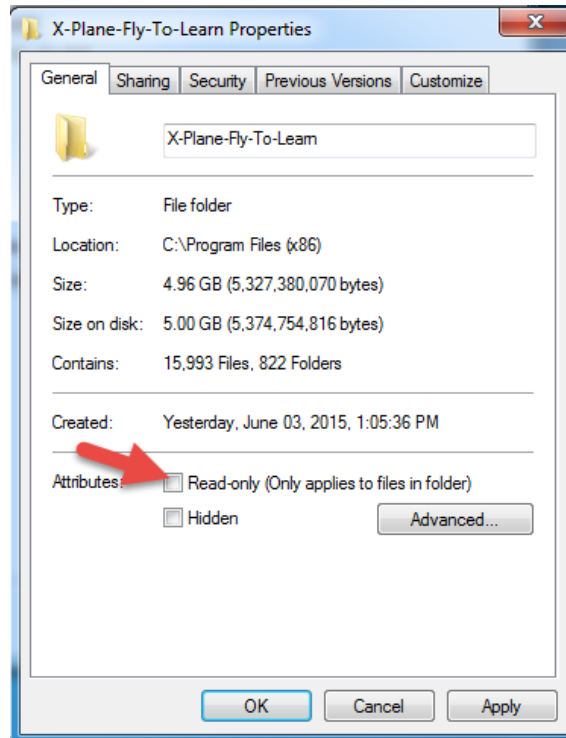
6. Copy the XPLANE.iso into same (x86) location.



7. Right click on the **X-Plane-Fly-To-Learn** folder under C:\Program Files (x86) and select **Properties**.



8. Uncheck **Read-Only**



9. Create shortcuts for
 - a. Xplane9.iso on desktop



- b. Fly To Learn (X-Plane)

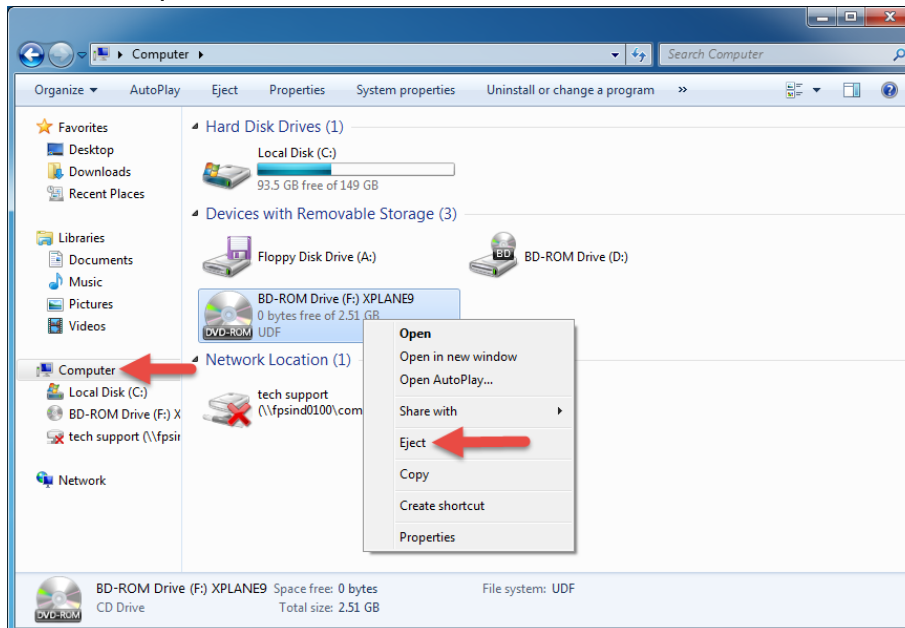


- c. Plane-Maker



To Run the Software

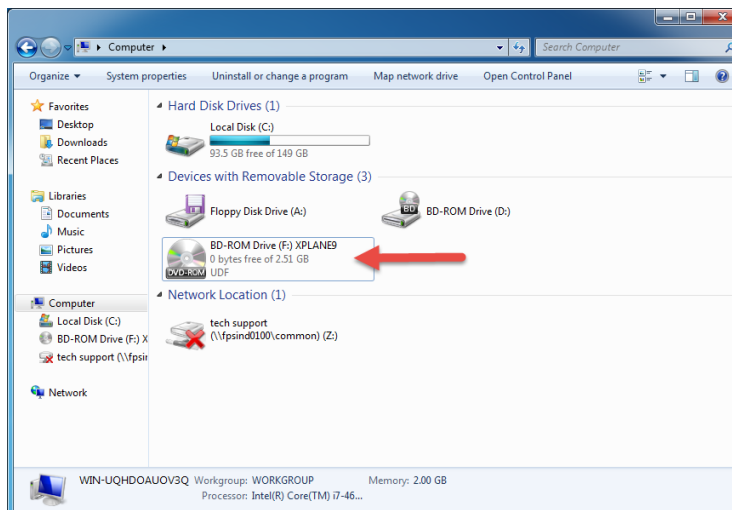
1. Go to “Computer” and unmount the above virtual DVD drive



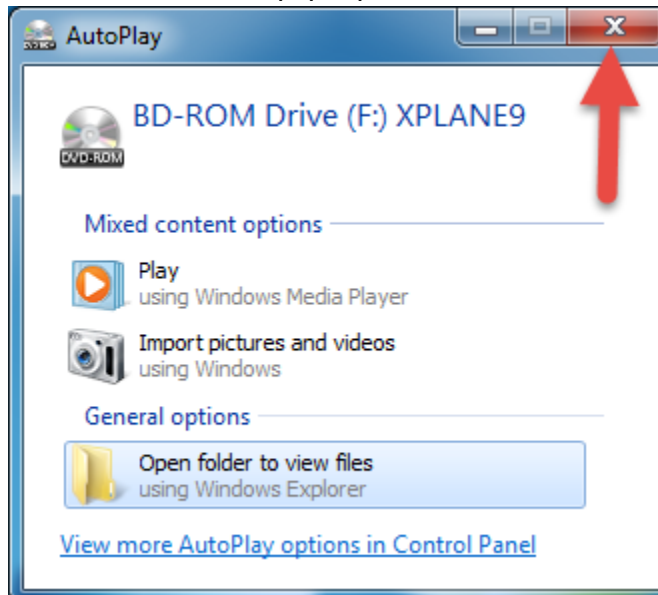
2. Remove Fly to Learn Thumb Drive from the PC.
3. On desktop select **XPLANE9.iso**



4. You should see the virtual drive mount



5. Cancel the screen that pops up.

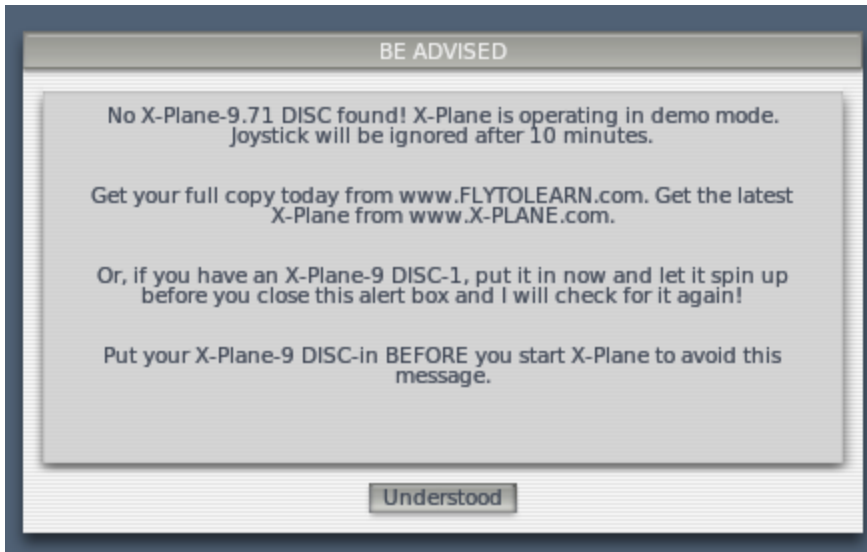


6. Select **X-plane.exe** and Fly To Learn will begin running



Troubleshooting Steps

1. In the event you see the below error, verify you have mounted the .iso image as outline in [Step 3 of How to Run the Software](#).



2. In the event you receive the below error, verify you have adjusted the permissions of the folder as outlined in [Step 8 of Procedure- Install Fly to Learn by X-Plane](#).

