

## Installation Guide for AGI STK 10- Standalone

Updated: 6/26/2018

STK Standalone Node-lock licenses can only be generated for 25 computers and cannot be used for imaging. If you have greater than 25 computers, please follow the guidelines for a [Network license located here](#). Node-lock licenses must be requested for each computer.

STK Licenses run on a yearly basis set by AGI. Plan accordingly on gaining licensing in the timeframe that you will be using the software.

Current Node-locked license timeframe: **January 1<sup>st</sup> 2017- June 30<sup>st</sup> 2018**

**\*\*Please note: If you are needing a license for the 2018-2019 school year, you must wait until after July 1<sup>st</sup> to request your license.**

**STK licenses are manually generated by PLTW. Please allow up to one business day for license requests to be fulfilled.**

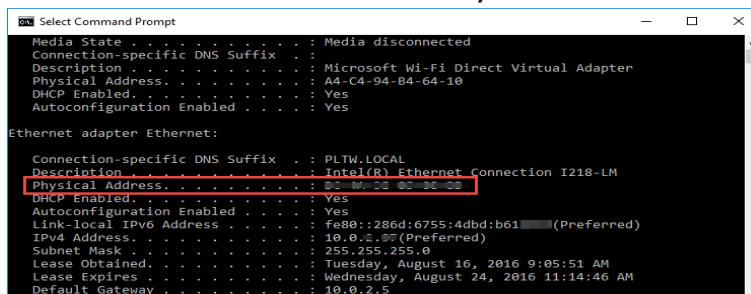
### Request a Standalone License

To get a Standalone license, you will need to send an email with the subject “STK Node Lock License Request” to [technicalsupport@pltw.org](mailto:technicalsupport@pltw.org). Please include the following information in the body of the email:

- Host ID (This is a 12-digit string of numbers)
- Registration ID (Volume serial number)
- Recipient Name

To find the Host ID (aka Physical Address) and Registration ID (aka Volume Serial Number), please use the following instructions:

1. Click Start in the Windows task bar.
2. In the search box, type **cmd** and press Enter to open the Command Prompt.
3. In the command window that opens, type **ipconfig/all**.
4. Scroll until you find the Ethernet adapter Ethernet or Ethernet adapter Local Area Connection section and note the Physical Address. This is the **Host ID**.



```
Select Command Prompt
Media State . . . . . : Media disconnected
Connection-specific DNS Suffix . . : 
Description . . . . . : Microsoft Wi-Fi Direct Virtual Adapter
Physical Address . . . . . : A4-C4-94-B4-64-10
DHCP Enabled. . . . . : Yes
Autoconfiguration Enabled . . . . . : Yes

Ethernet adapter Ethernet:
Connection-specific DNS Suffix . . : PLTW.LOCAL
Description . . . . . : Intel(R) Ethernet Connection I218-LM
Physical Address . . . . . : 82-ME-DE-82-9C-23
DHCP Enabled. . . . . : Yes
Autoconfiguration Enabled . . . . . : Yes
Link-local IPv6 Address . . . . . : fe80::286d:6755:4dbd:b61 (Preferred)
IPv4 Address. . . . . : 10.0.1.5 (Preferred)
Subnet Mask . . . . . : 255.255.255.0
Lease Obtained. . . . . : Tuesday, August 16, 2016 9:05:51 AM
Lease Expires . . . . . : Wednesday, August 24, 2016 11:14:46 AM
Default Gateway . . . . . : 10.0.2.5
```

- At the C: prompt in the command window, type **vol**. The window returns: “Volume Serial Number is XXXX-XXXX”. This is the **Registration ID**.



```
Select Command Prompt
C:\>
C:\>
C:\>vol
Volume in drive C has no label.
Volume Serial Number is 5A4A-9D52
C:\>
```

**Note:** Part 3 describes how to install the license after you receive the license file from PLTW

- When you receive your STK 10 license, download and save the license file to your desktop.

\*Please allow up to one business day for license requests to be generated.

## Install AGI STK 10

- Go to: <http://support.agi.com/downloads/>
- Log In if you have an existing AGI account, or select REGISTER NEW ACCOUNT

### LOG IN

Email

Password

[Forgot your password?](#)

LOG IN

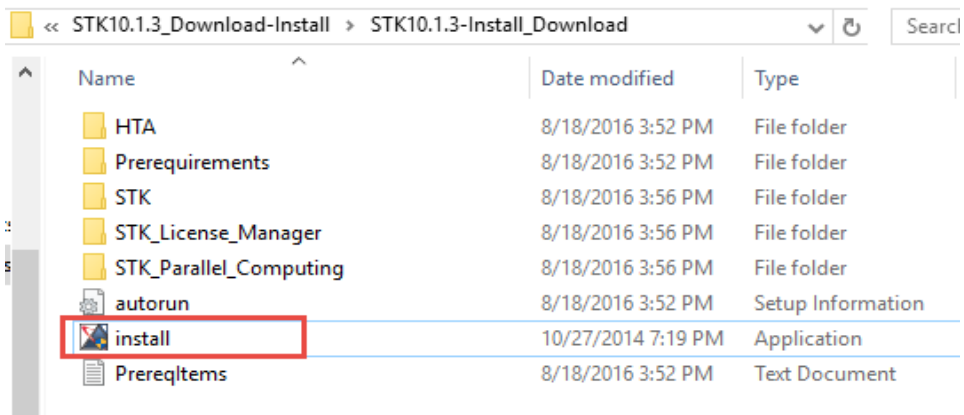
REGISTER NEW ACCOUNT

- If you are creating a new AGI account, fill out the required information and select Create Account. Then select the link in the confirmation email AGI sends to confirm your account, and go back to <http://support.agi.com/downloads/>

3. Scroll down and select **STK 10.1.3**

STK 11.0.1 STK only: 32 bit or 64 bit ? STK + Add-ons: 32 bit or 64 bit	2	2	2	11.0.1
STK 11 STK only: 32 bit or 64 bit ? STK + Add-ons: 32 bit or 64 bit	2	2	2	11.0
<b>STK 10.1.3</b>	10.1.3	10.1.3	10.1.3	10.1.1
STK 10.1.2	10.1.2	10.1.2	10.1.2	10.1.1
STK 10.1.1	10.1.1	10.1.1	10.1.1	10.1.1

4. When prompted, save the STK download files to your computer. The download may take a full hour to finish.
5. When the download is complete, extract the files to a location of your choice.
6. In the extracted folder, select the **install** application.

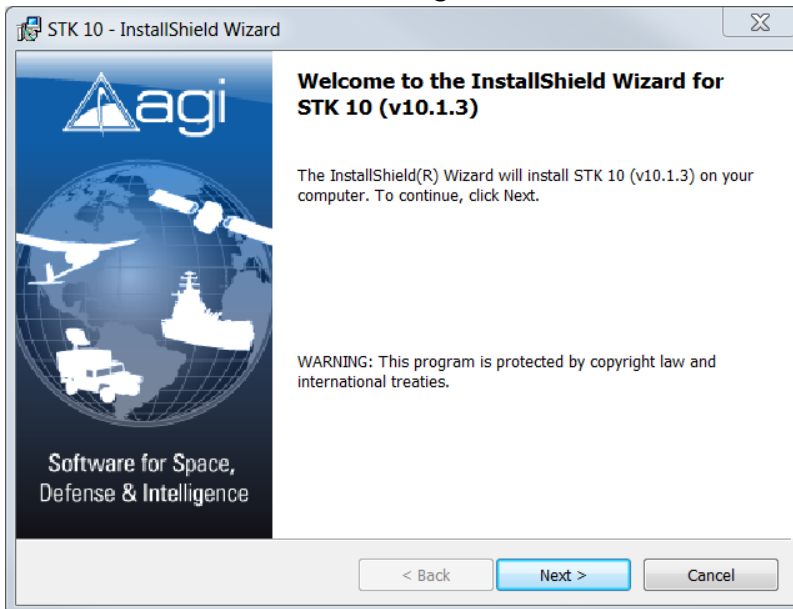


7. If prompted to allow the software to make changes to your computer, select **Yes (or Run)**.

8. Select **STK 10** and select **Start Installation**.

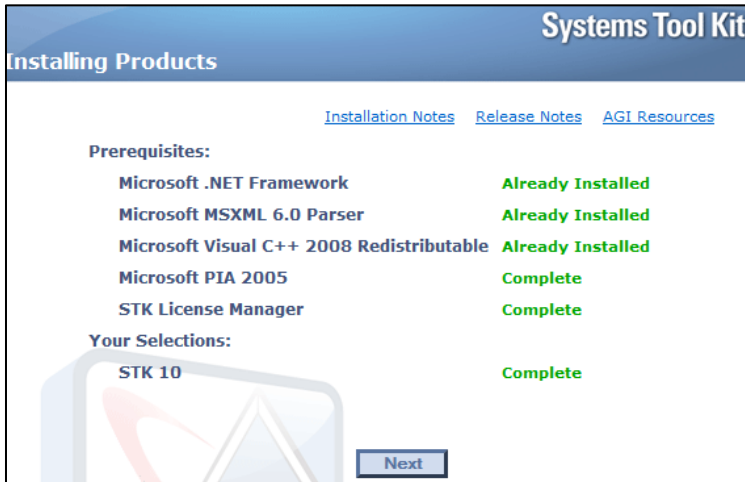


9. On the InstallShield Wizard dialog box, select **Next**.



10. Follow the prompts to install to the default locations.

11. When the installation is complete, select **Finish**.
12. When the STK 10 status shows “Complete”, select **Next**.

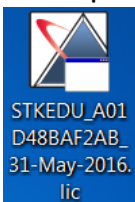


13. To exit the installation program, select **Finish**.  
The STK 10 shortcut is now on your desktop.

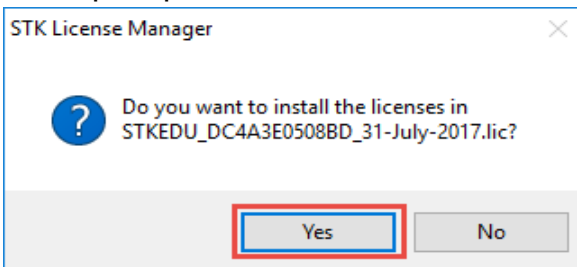


## Install a Standalone License

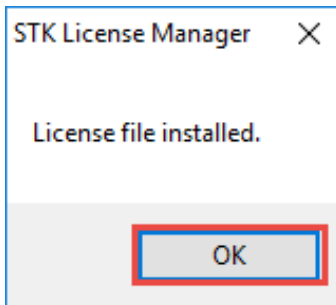
1. If you have not already, save the license file you received by email from PTLW to your desktop.



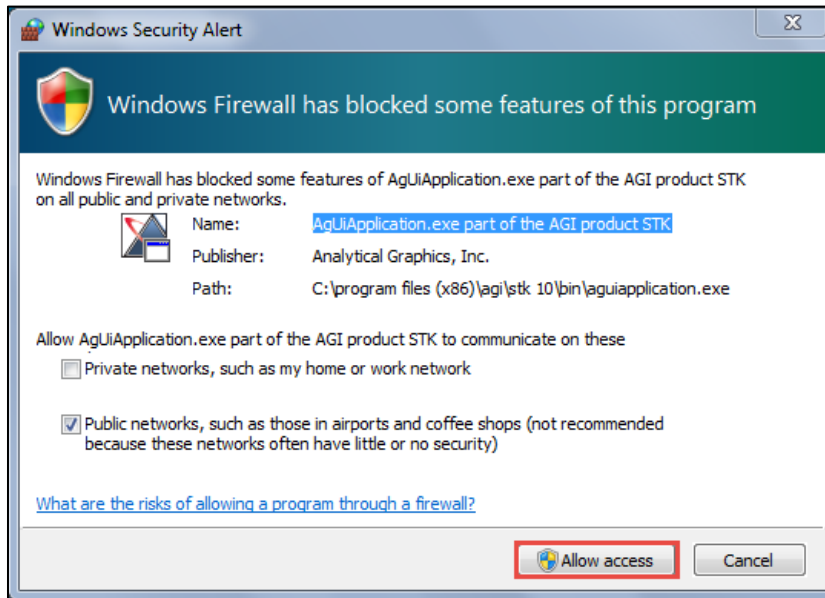
2. Double-click the license file.
3. When prompted to install the licenses, select **Yes**.



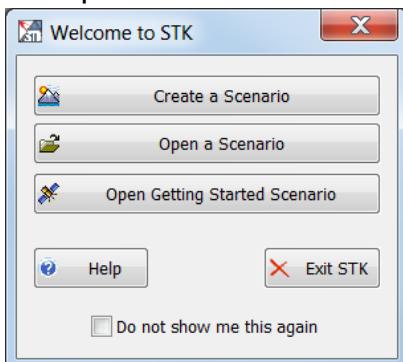
4. When the installation is complete, select **OK**.



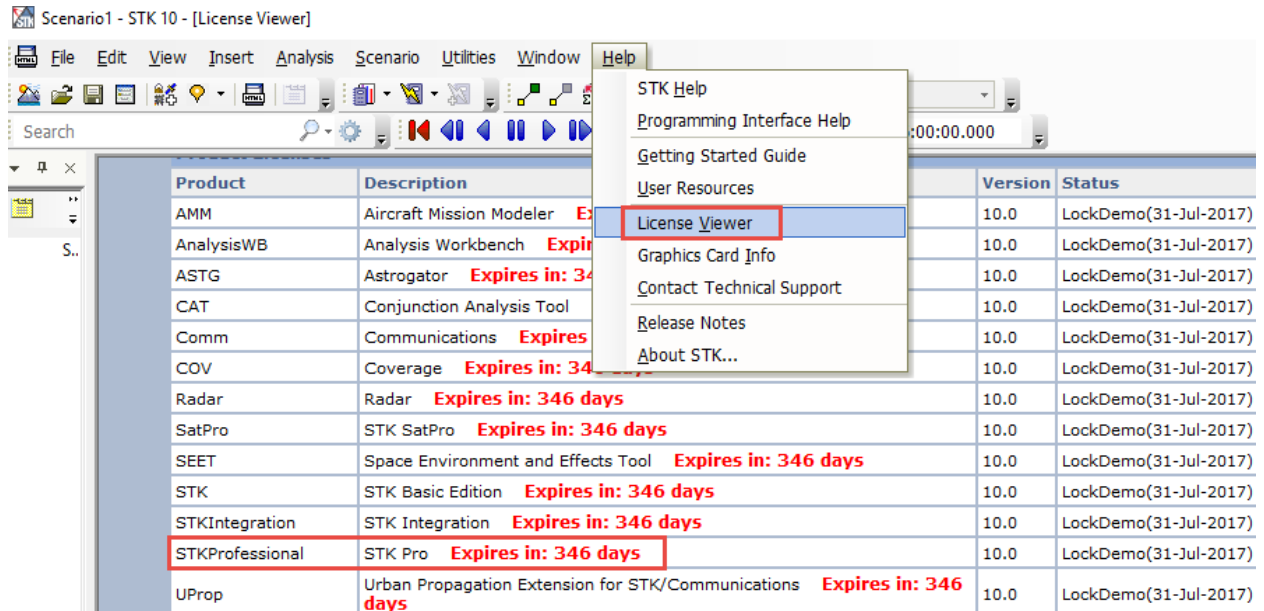
5. Use the desktop shortcut to launch STK 10.  
6. When prompted, select **Allow access**.



When the software is successfully deployed, the STK 10 window and a Welcome dialog box open.



7. To see how many days are left on the licenses at any time, select **Help > License Viewer**.



Product	Description	Expires in	Version	Status
AMM	Aircraft Mission Modeler	Expires in: 346 days	10.0	LockDemo(31-Jul-2017)
AnalysisWB	Analysis Workbench	Expires in: 346 days	10.0	LockDemo(31-Jul-2017)
ASTG	Astrogator	Expires in: 346 days	10.0	LockDemo(31-Jul-2017)
CAT	Conjunction Analysis Tool	Expires in: 346 days	10.0	LockDemo(31-Jul-2017)
Comm	Communications	Expires in: 346 days	10.0	LockDemo(31-Jul-2017)
COV	Coverage	Expires in: 346 days	10.0	LockDemo(31-Jul-2017)
Radar	Radar	Expires in: 346 days	10.0	LockDemo(31-Jul-2017)
SatPro	STK SatPro	Expires in: 346 days	10.0	LockDemo(31-Jul-2017)
SEET	Space Environment and Effects Tool	Expires in: 346 days	10.0	LockDemo(31-Jul-2017)
STK	STK Basic Edition	Expires in: 346 days	10.0	LockDemo(31-Jul-2017)
STKIntegration	STK Integration	Expires in: 346 days	10.0	LockDemo(31-Jul-2017)
STKProfessional	STK Pro	Expires in: 346 days	10.0	LockDemo(31-Jul-2017)
UProp	Urban Propagation Extension for STK/Communications	Expires in: 346 days	10.0	LockDemo(31-Jul-2017)

8. Scroll down to the Product Licenses section. Verify that **STKProfessional** is active.