



Multisim Installation Guide

Updated: 6/8/2018

Procedure

It is imperative that you consult your IT team before you install any software or attempt to change any settings on your computer. Administrative rights are based on a profile created by your System Administrator. Many variations are possible, and these “rights” may not allow you to install this software properly.

Prepare Your System

1. Disable the User Account Controls (set to **Never notify**).
2. Disable your anti-virus software.
3. Disable the pop-up blocker in the browser you are using.

Note: You can re-enable these settings after the software is installed and operational.

4. Ensure you have permissions to install USB drivers for any Android, Robotics, or other devices that will connect to the computer via USB.

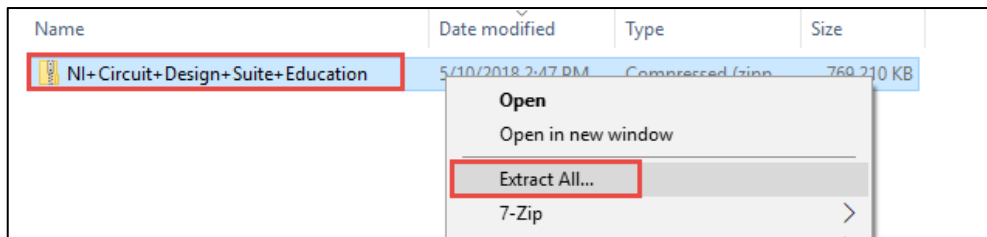
*For Classroom Installation, use the following serial number: **M83X72319***

*For Student home installation use the following serial number: **H11X42400***

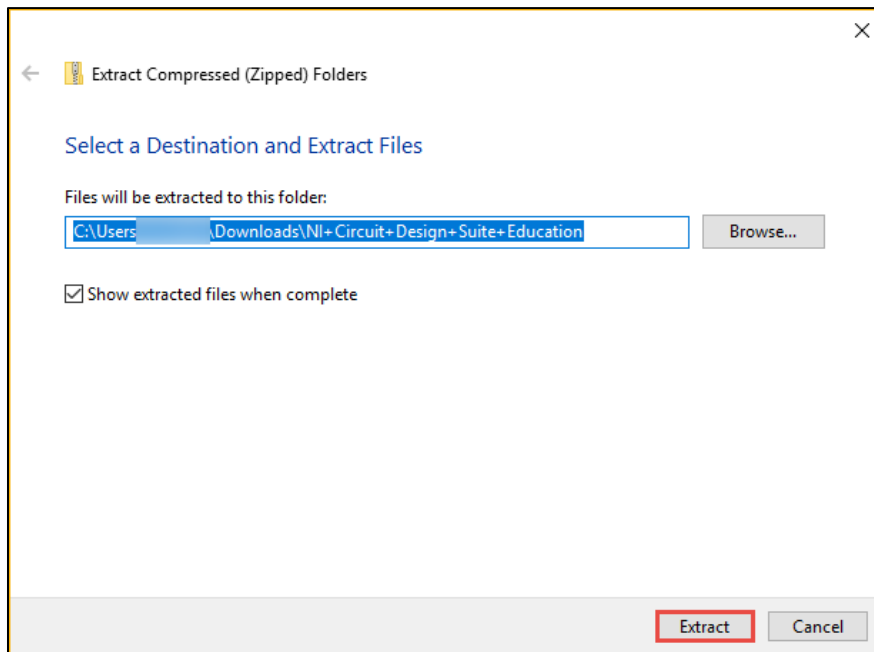
Note: This step takes about 40 minutes to complete.

Part 1: Install Multisim

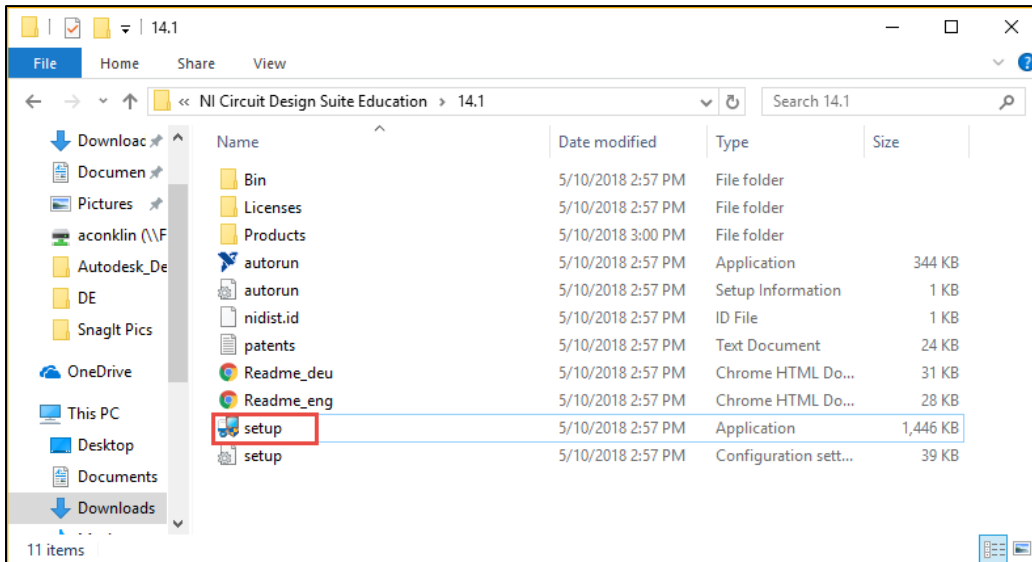
1. Select the following link to download the installer:
<https://s3.amazonaws.com/support-downloads.pltw.org/Installers/Digital+Electronics/NI+Circuit+Design+Suite+Education.zip>
2. Go to the downloaded file and extract the .zip file.



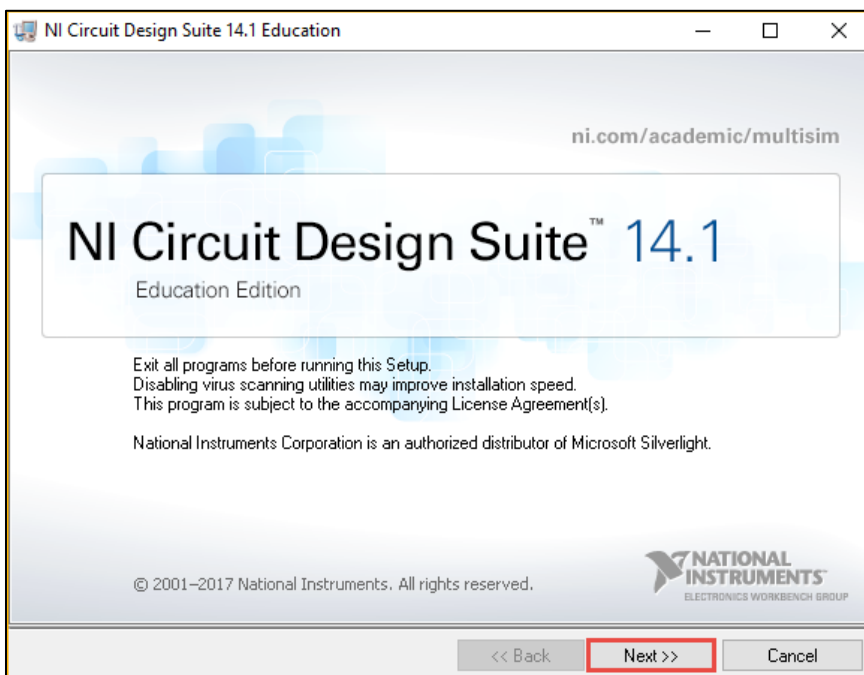
3. Choose a location for the installer to extract and begin extraction. Once the extraction is complete, select the **next** button.



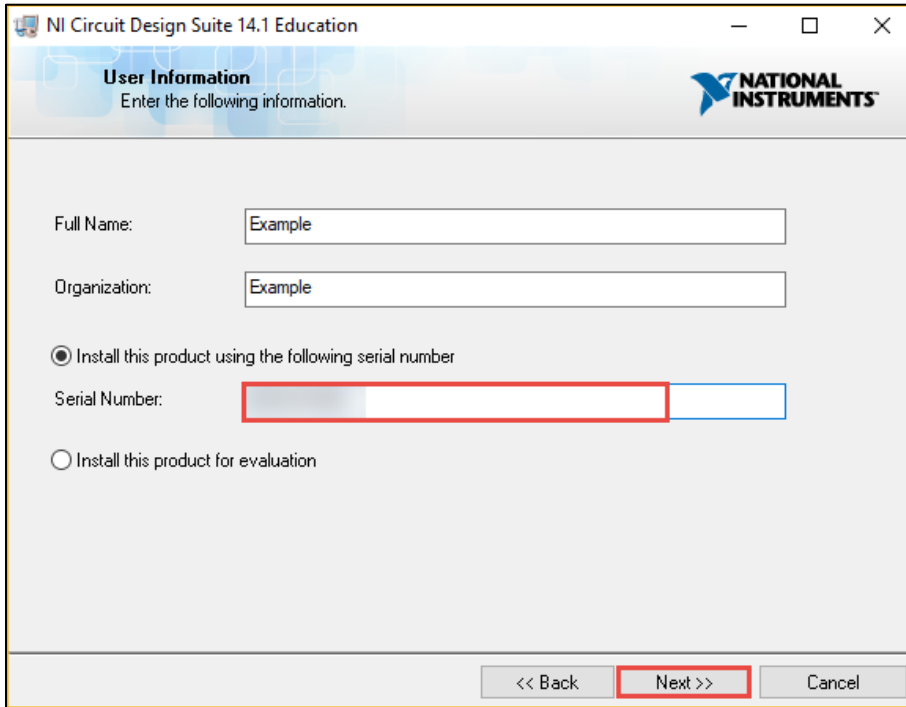
4. Open the downloaded folder and click through the folders until you can select **setup**.



5. If prompted to allow the software to make changes to your computer, select **Run**.
6. Select **Next** on the installer.



7. Enter your **Name, Organization, and the Serial Number** from page 1 and select **Next**.



NI Circuit Design Suite 14.1 Education

User Information
Enter the following information.

NATIONAL INSTRUMENTS

Full Name:

Organization:

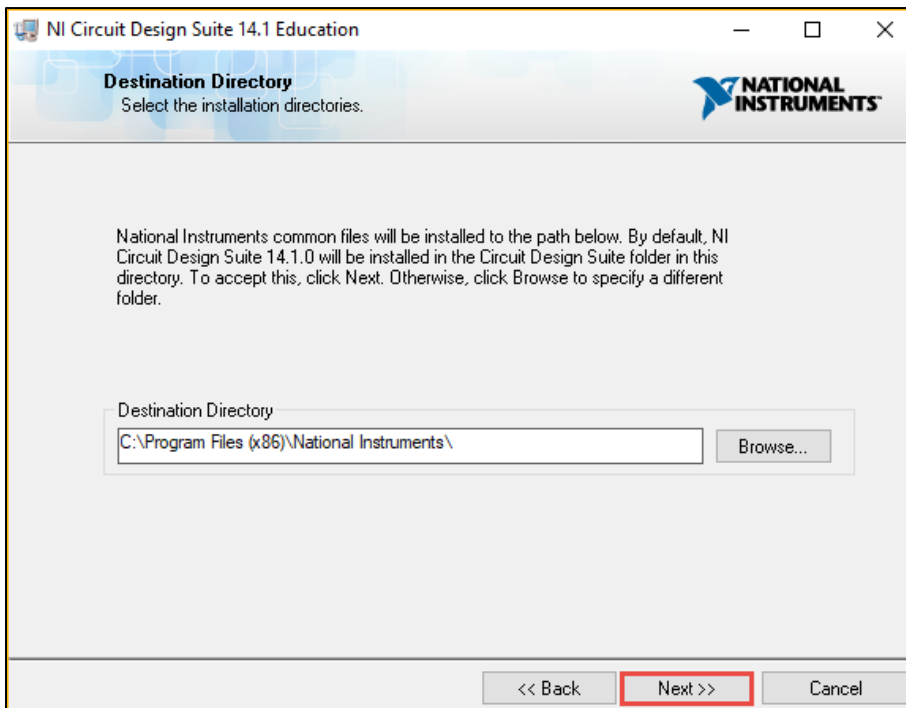
Install this product using the following serial number

Serial Number:

Install this product for evaluation

<< Back **Next >>** Cancel

8. To keep the default directory, select **Next**.



NI Circuit Design Suite 14.1 Education

Destination Directory
Select the installation directories.

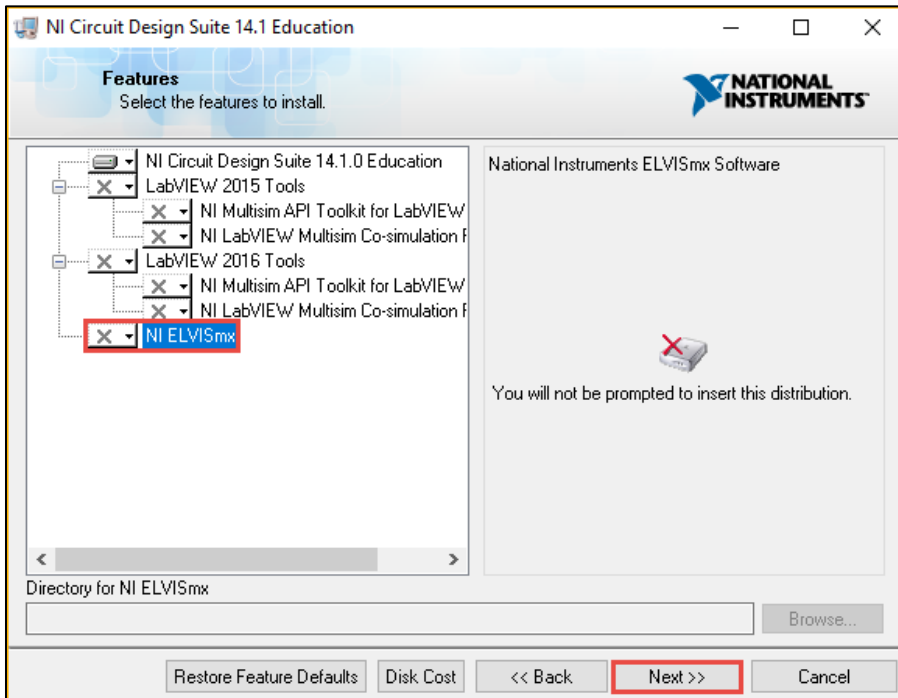
NATIONAL INSTRUMENTS

National Instruments common files will be installed to the path below. By default, NI Circuit Design Suite 14.1.0 will be installed in the Circuit Design Suite folder in this directory. To accept this, click Next. Otherwise, click Browse to specify a different folder.

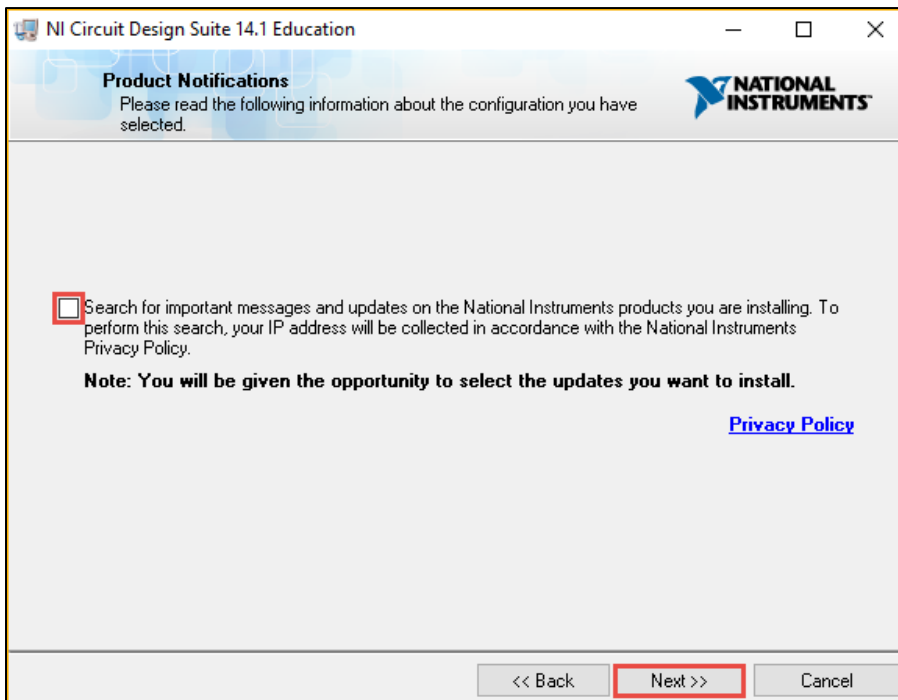
Destination Directory

<< Back **Next >>** Cancel

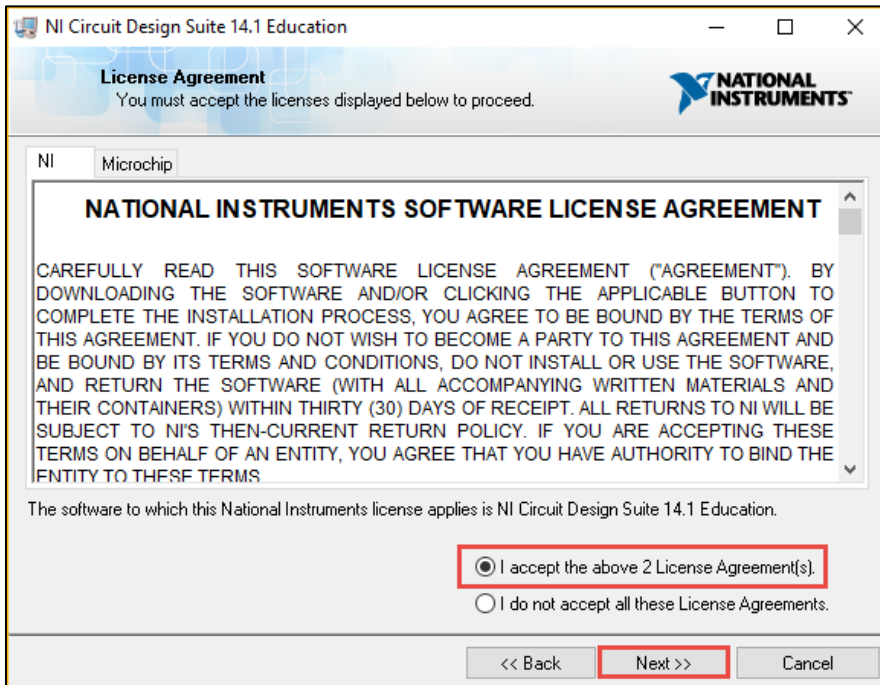
9. In the Features window, select **Do not install NI ELVISmx**, then select **Next**.



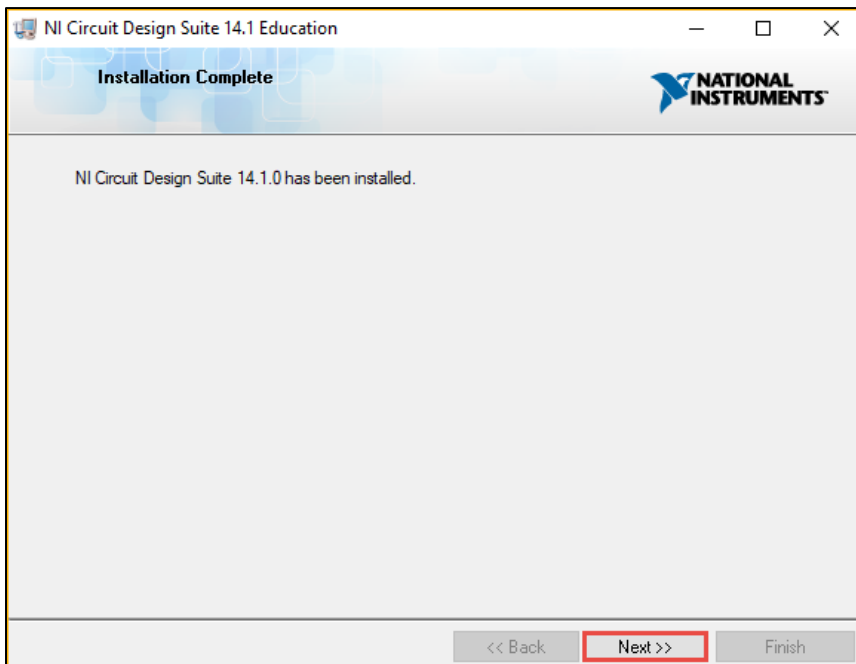
10. **Clear** the check box and select **Next**. Please do not search and make future updates to the software.



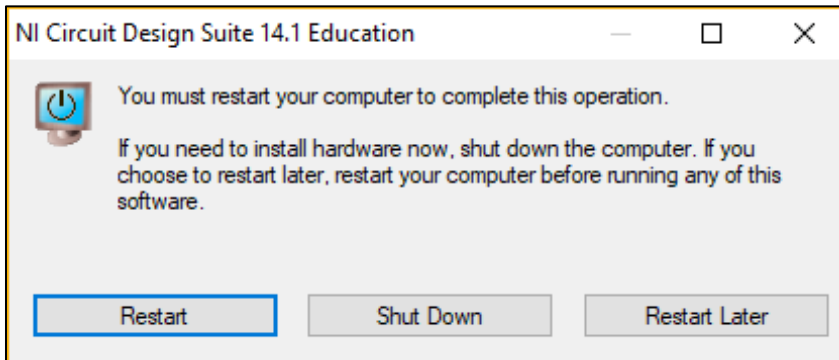
11. For the License Agreement, select **I accept** and **Next**.



12. When the installation is complete, select **Next**.

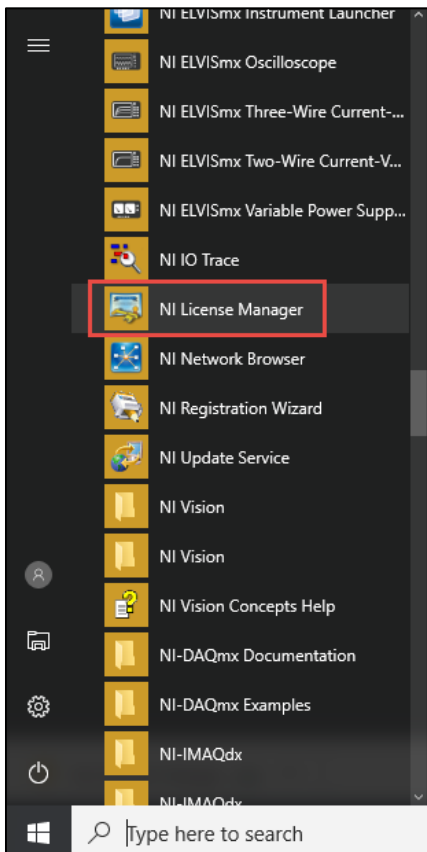


13. Select **Restart** or **Restart Later**.

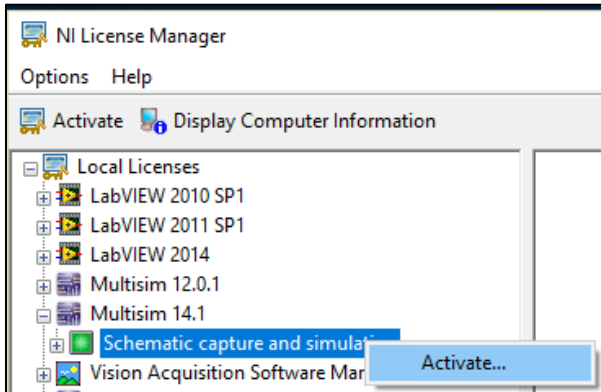


Part 2: *Activate Multisim*

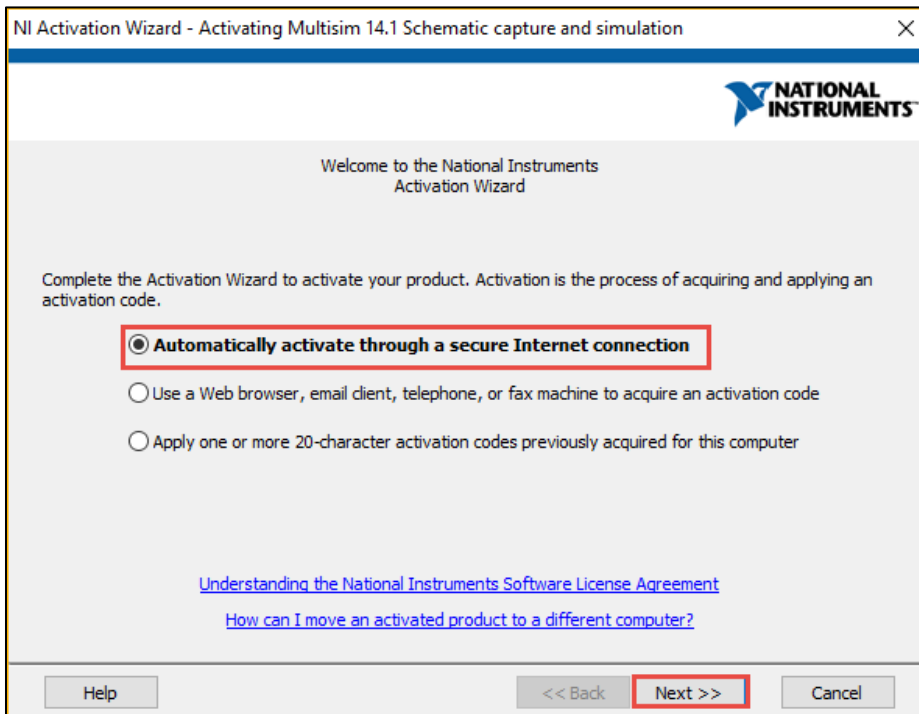
14. Select **Start > All Programs > National Instruments > NI License Manager**.



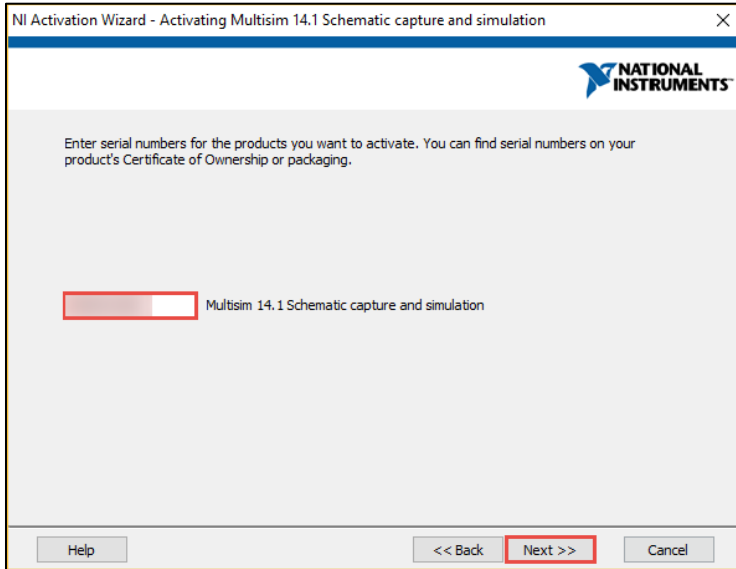
15. Under Multisim 14.1, right-click **Schematic capture and simulation** and select **Activate**.



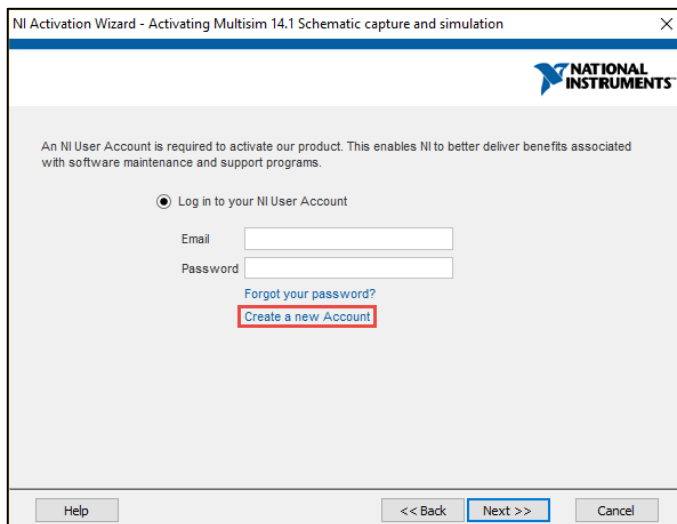
16. On the Activation Wizard box, select **Automatically activate** and then select **Next**.



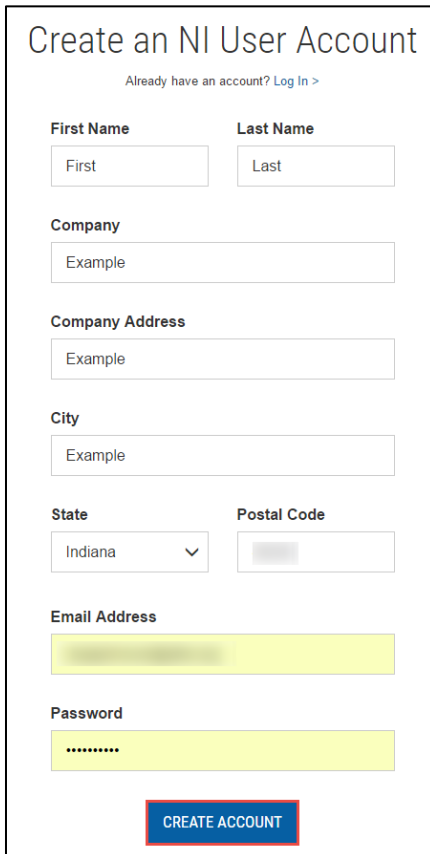
17. Input the serial number from page 1 and select **Next**.



18. Select **Create a new Account** if you do not have an account. If you do have an NI account, skip to step 20.

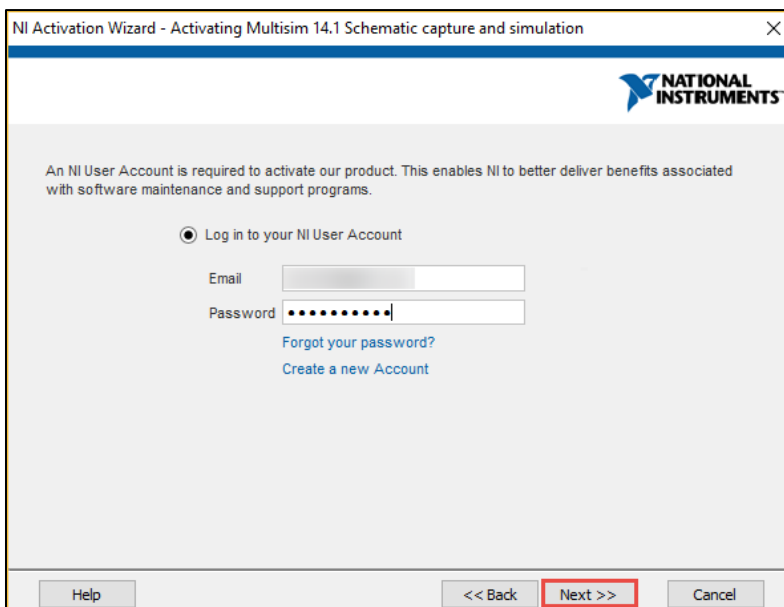


19. Fill out the information requested on the NI website and select **Create Account**.



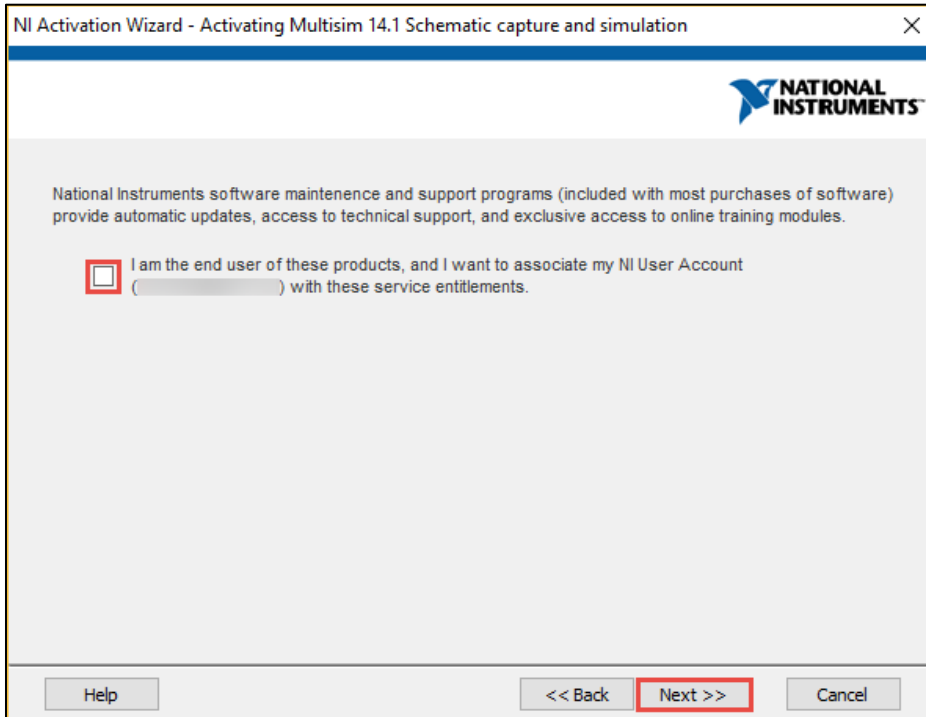
The screenshot shows a web form titled "Create an NI User Account". At the top, there is a link "Already have an account? Log In >". The form contains several input fields: "First Name" (with "First" as a placeholder), "Last Name" (with "Last" as a placeholder), "Company" (with "Example" as a placeholder), "Company Address" (with "Example" as a placeholder), "City" (with "Example" as a placeholder), "State" (a dropdown menu currently showing "Indiana"), and "Postal Code" (with a greyed-out placeholder). Below these are "Email Address" and "Password" fields, both highlighted in yellow. At the bottom of the form is a blue button labeled "CREATE ACCOUNT".

20. After your account is successfully created, you can return to the activation wizard and input your credentials. Then click **Next** to proceed.



The screenshot shows a dialog box titled "NI Activation Wizard - Activating Multisim 14.1 Schematic capture and simulation". The National Instruments logo is in the top right corner. The main text reads: "An NI User Account is required to activate our product. This enables NI to better deliver benefits associated with software maintenance and support programs." Below this, there is a radio button selected for "Log in to your NI User Account". Underneath are "Email" and "Password" input fields, both containing greyed-out text. There are two links: "Forgot your password?" and "Create a new Account". At the bottom, there are three buttons: "Help", "Next >>" (highlighted with a red box), and "Cancel".

21. Deselect the check box, unless you would like to receive automatic updates and other information by email, and select **Next**.



NI Activation Wizard - Activating Multisim 14.1 Schematic capture and simulation

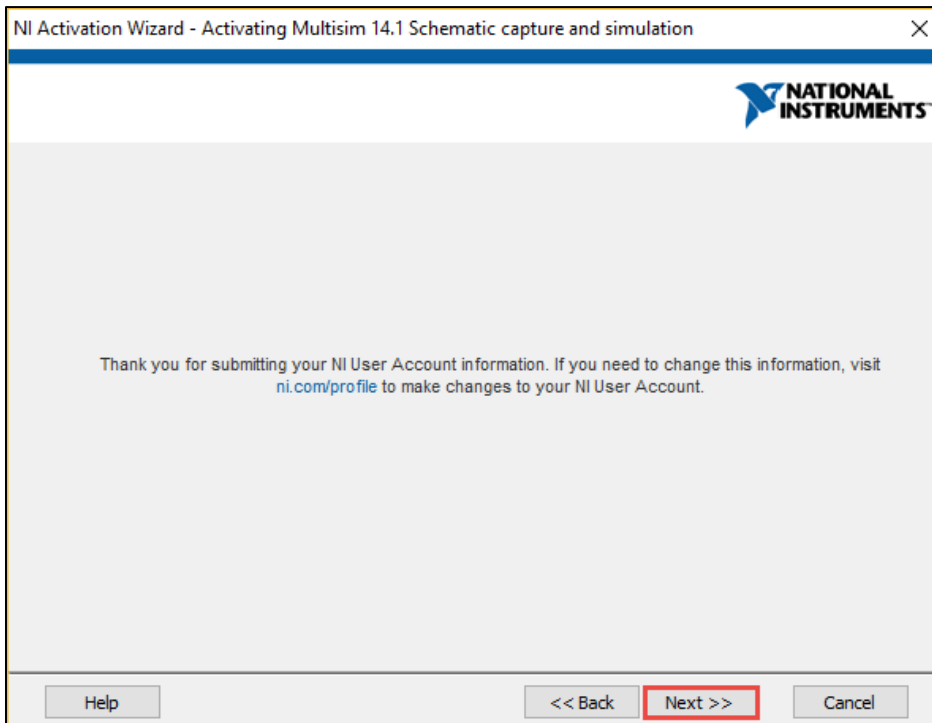
NATIONAL INSTRUMENTS

National Instruments software maintenance and support programs (included with most purchases of software) provide automatic updates, access to technical support, and exclusive access to online training modules.

I am the end user of these products, and I want to associate my NI User Account () with these service entitlements.

Help << Back **Next >>** Cancel

22. Select **Next**



NI Activation Wizard - Activating Multisim 14.1 Schematic capture and simulation

NATIONAL INSTRUMENTS

Thank you for submitting your NI User Account information. If you need to change this information, visit ni.com/profile to make changes to your NI User Account.

Help << Back **Next >>** Cancel

23. When activation is complete, select **Finish**.

