

Step 4: NI ELVISmx I6.0 Driver Installation Guide

Updated: 5/9/2018

Before you start

NI Elvismx I6 is compatible for all versions of Windows.

It is imperative that you consult your IT team before you install any software or attempt to change any settings on your computer. Administrative rights are based on a profile created by your System Administrator. Many variations are possible, and these “rights” may not allow you to install this software properly.

Note: This procedure is the fourth in a four-step process. This step takes about 15 minutes to complete.

Prepare Your System

1. Disable the User Account Controls (set to **Never notify**).
2. Disable your anti-virus software.
3. Disable the pop-up blocker in the browser you are using.

Note: You can re-enable these settings after the software is installed and operational.

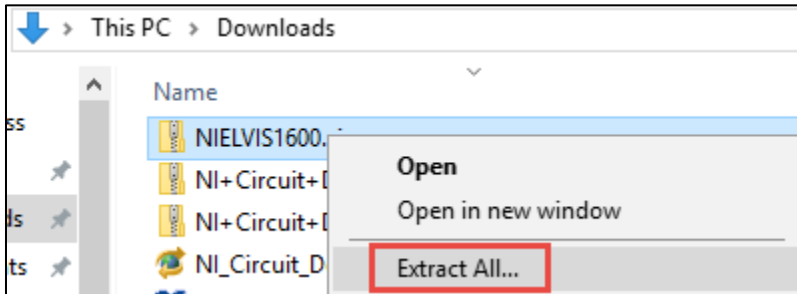
4. Ensure you have permissions to install USB drivers for any Android, Robotics, or other devices that will connect to the computer via USB.

Step 4 – NI ELVISmx I6.0 Driver

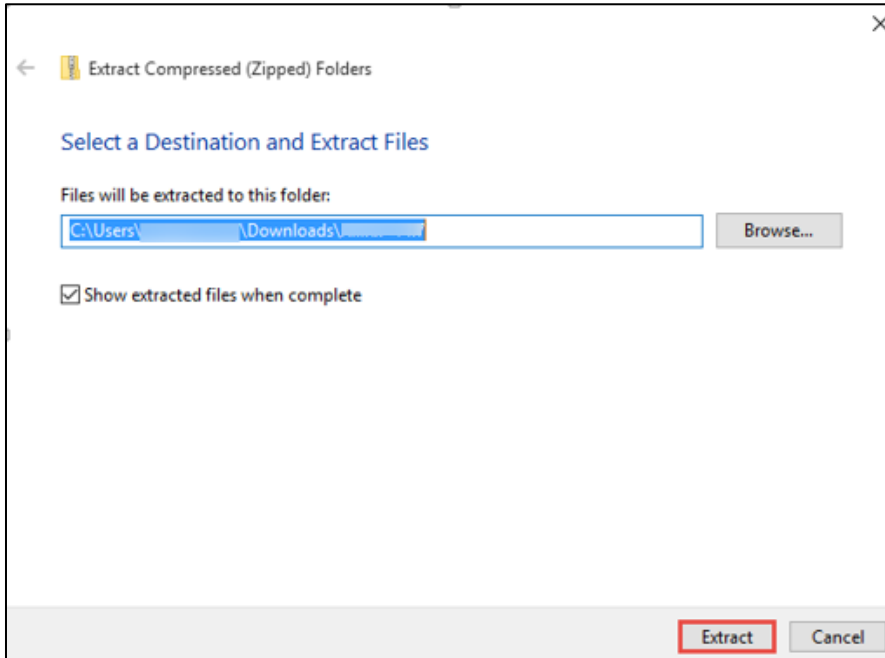
Note: This procedure takes about an hour to complete.

1. Select the following link to download the installer:
<https://s3.amazonaws.com/support-downloads.pltw.org/Installers/Digital+Electronics/NIELVIS1600.zip>

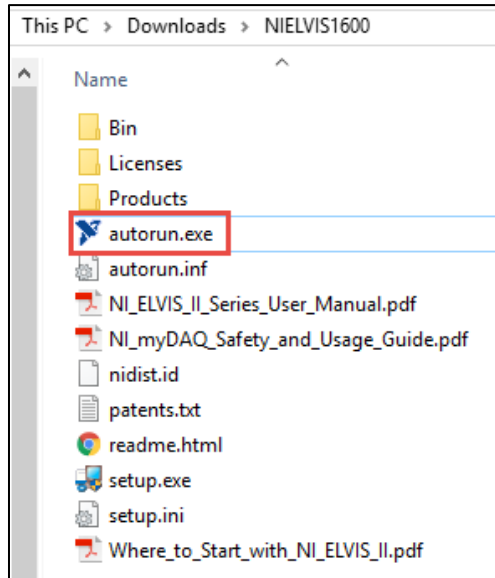
2. Go to the downloaded file in file explorer and right click to select **Extract All**



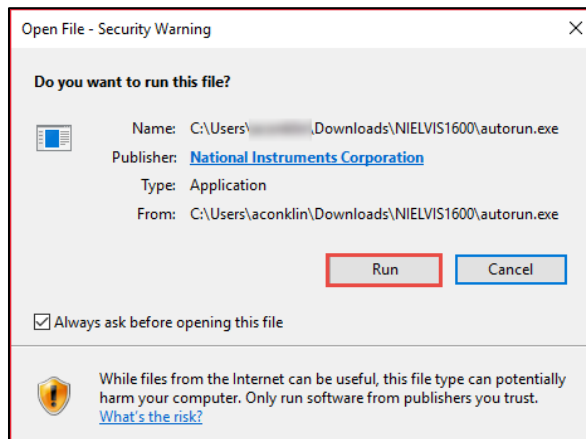
3. **Extract** the files to a destination where you can easily access them.



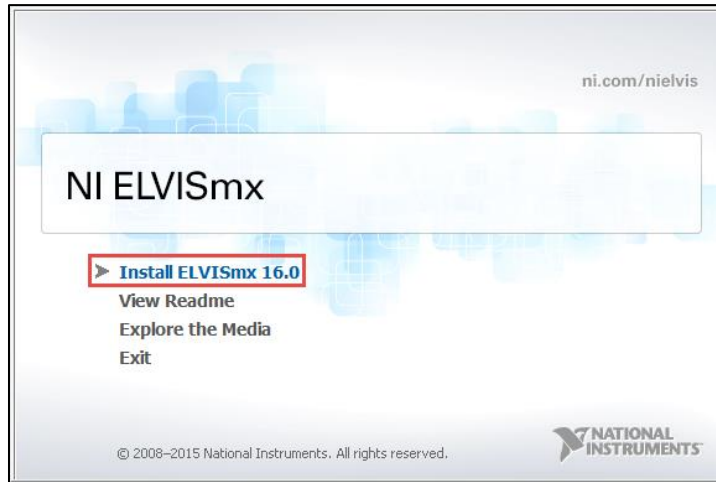
4. Open the extracted folder and run **autorun.exe**.



5. Select RUN if prompted.



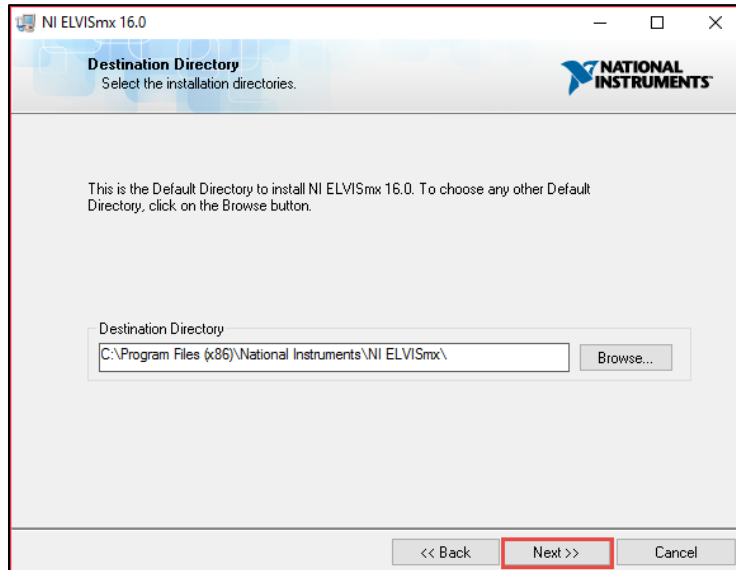
6. Select **Install ELVISmx 16.0**



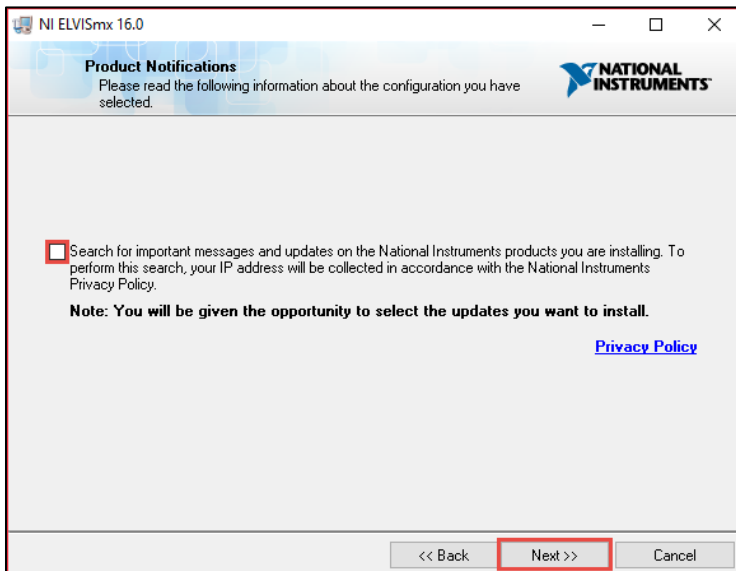
7. Select **Next**.



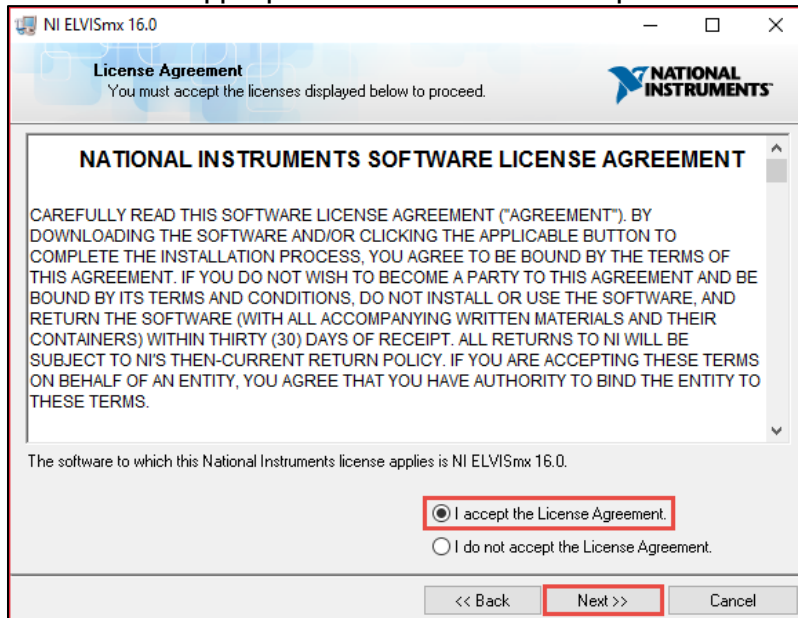
8. Select **Next**.



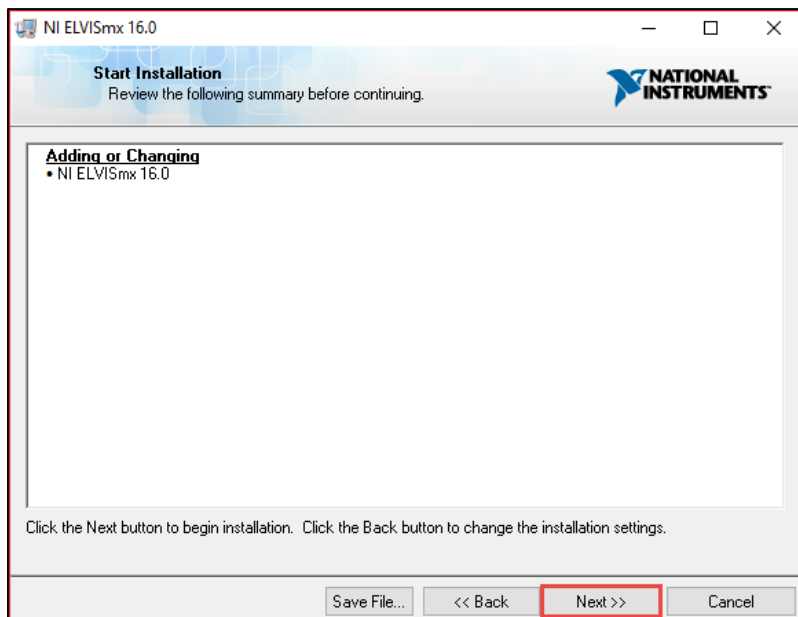
9. Uncheck the checkbox and select **Next**. Please do not apply updates to this software in the future.



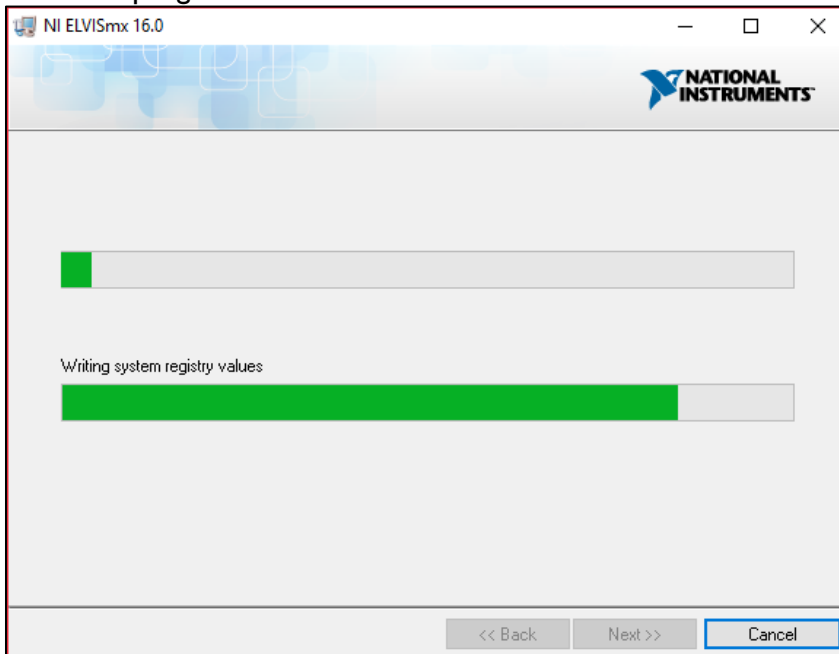
10. Select the appropriate radio button to accept the license agreement and select **Next**



11. Select **Next**.



12. Allow program to install



13. Installation complete. Select **Next** to finish and close installer.

