

# Installation Guide for CNC Motion: Benchmill 6000, ProMill8000, Super proLIGHT & Expert Mill

Updated: 12/3/2018

For **Classroom installation**, use the license key that is provided by the Solution Center. Contact them at [solutioncenter@pltw.org](mailto:solutioncenter@pltw.org). Select **BenchMill 6000 Machining Center** in step 7.

- This is a standalone license; not a network license
- These instructions are for the 6000, 8000, Super, or Expert Mill only. They will not work for the Regular Prolight 1000 Mill.
- If imaging, **DO NOT** activate the master image. The image must be pushed out, then individually activate each client machine.

Note: This process takes about 20 minutes to complete.

## Before you start

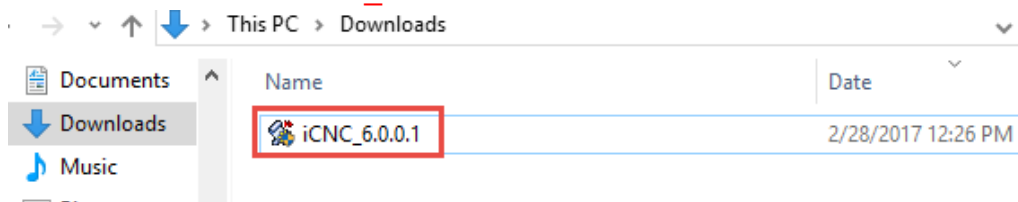
- Disable your anti-virus program.
- Have Administrative Rights

## Procedure

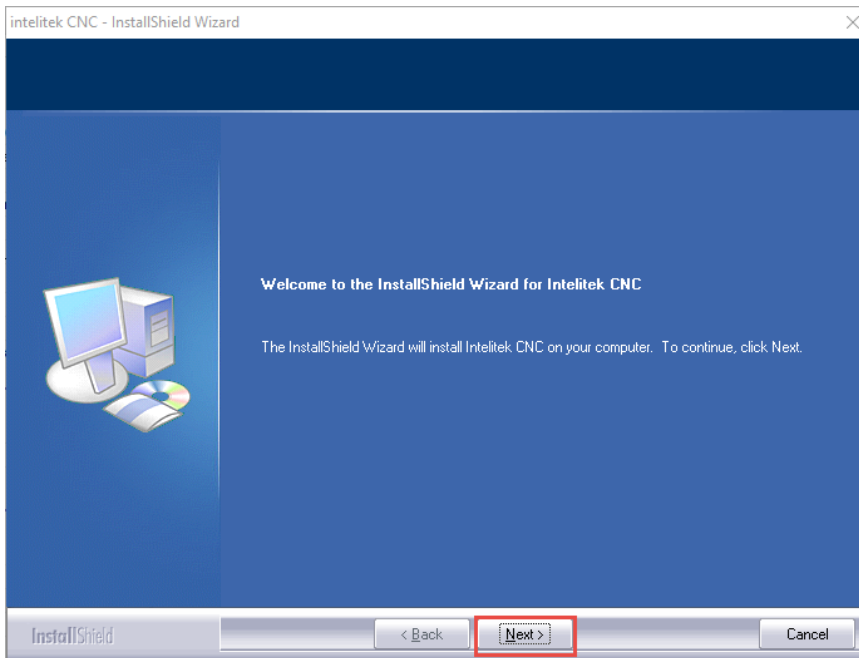
1. Go to <http://intelitekdownloads.com/PLTW/ICNC/>
2. Select **DOWNLOAD**

Filename	Download	Filetype	Filesize
iCNC_6.0.0.1.exe	 <b>DOWNLOAD</b>	file - exe	205027616

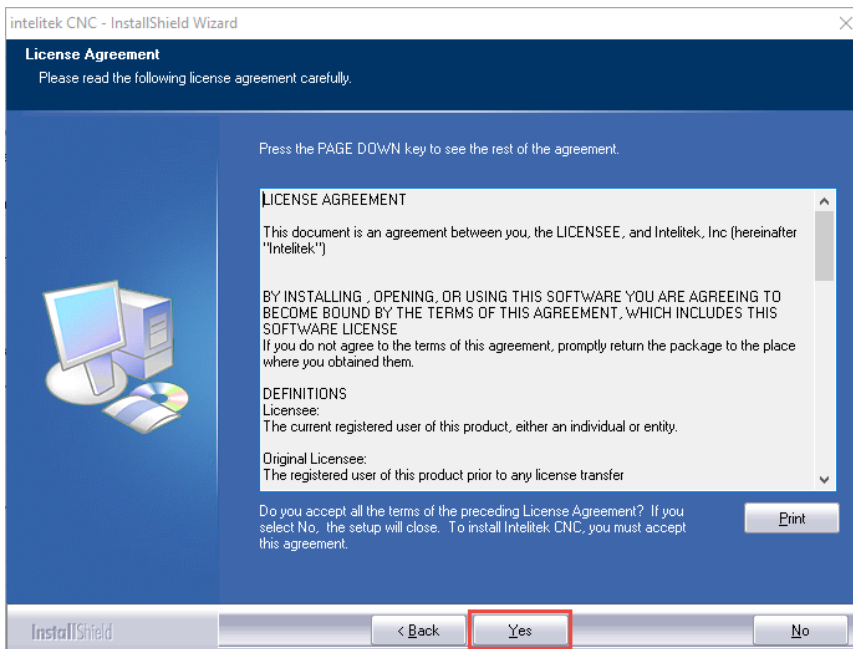
3. Run the downloaded **iCNC\_6.0.0.1**



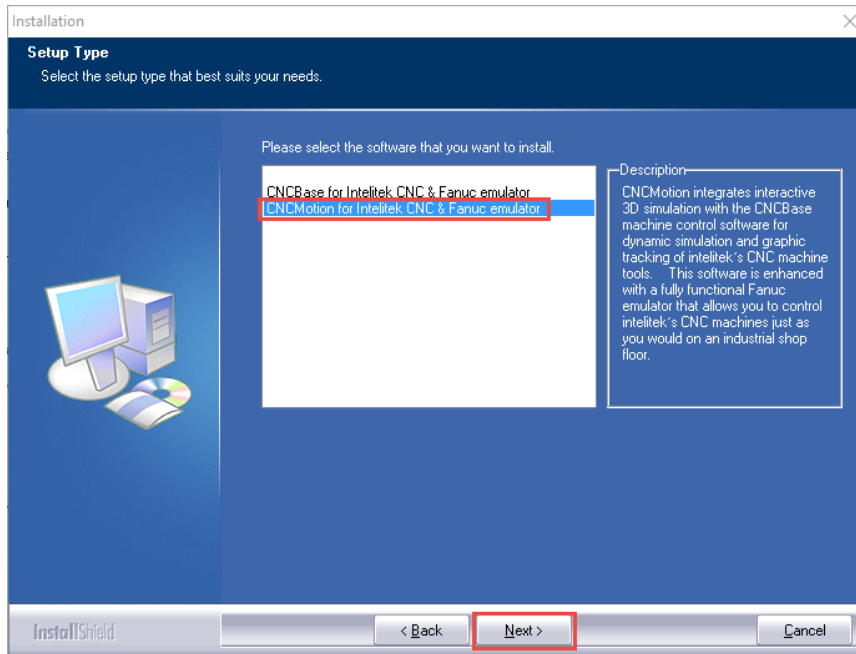
4. Select **Next**



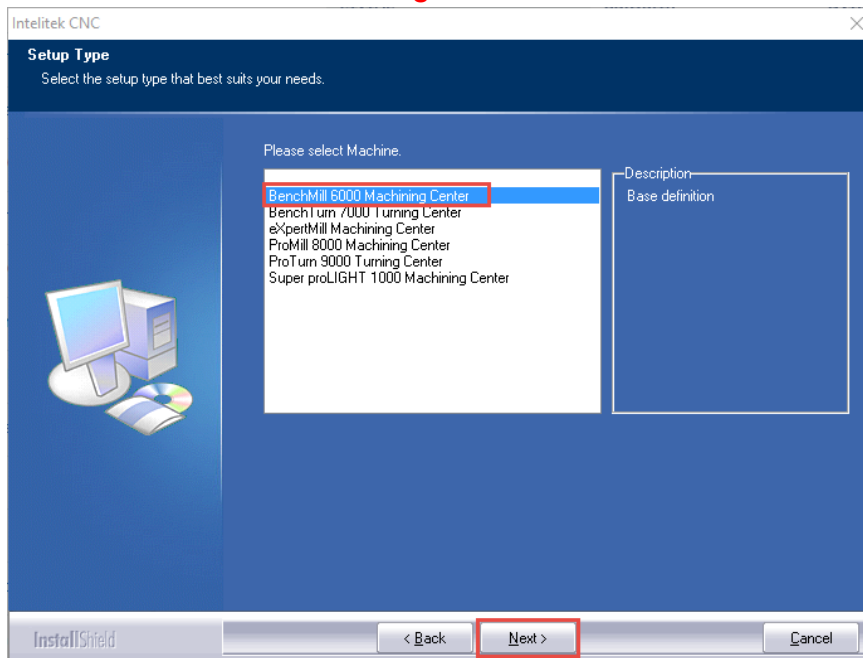
5. Select **Yes**



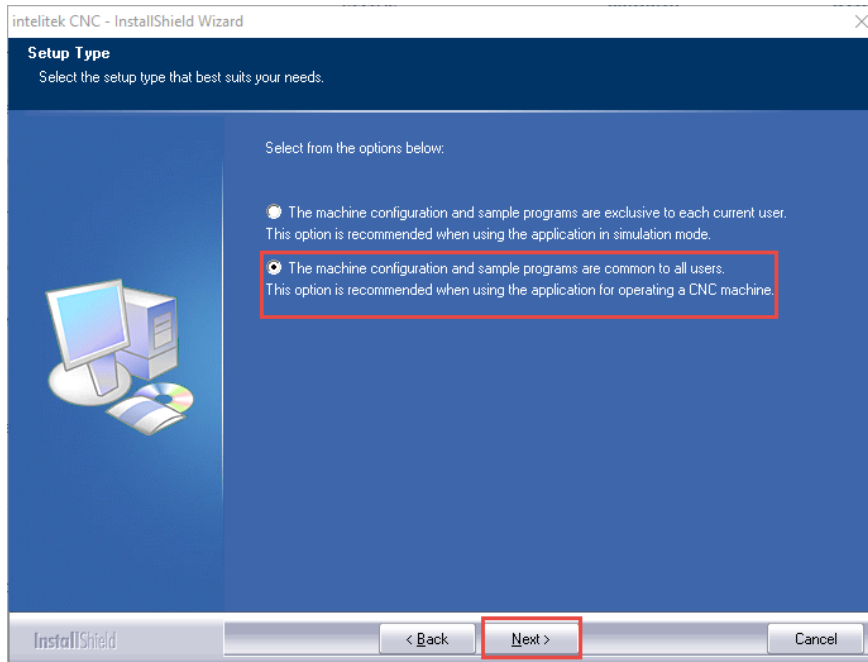
6. Select **CNCMotion for Intelitek CNC & Fanuc emulator**. Then select **Next**.



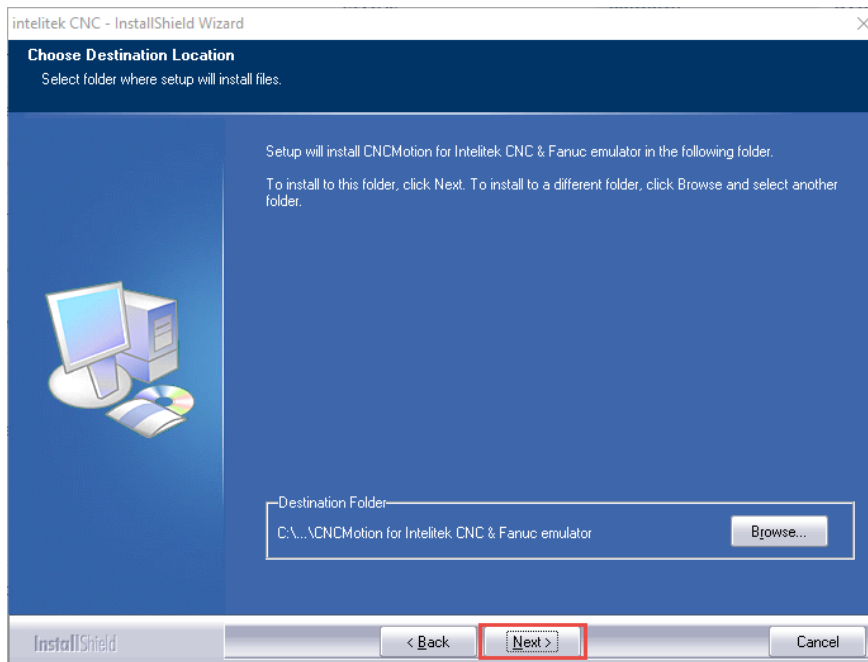
7. Select **BenchMill 6000 Machining Center**. Then select **Next**.



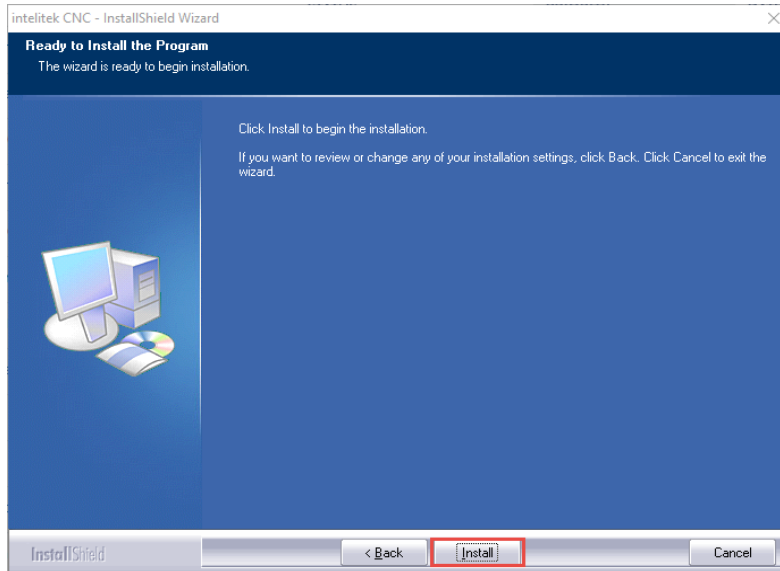
8. Select **machine configuration are common for all users**. Then select **Next**.



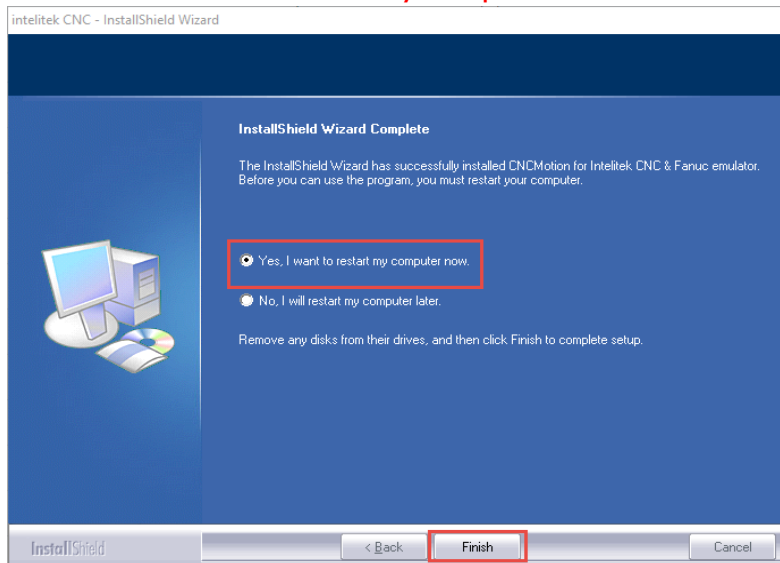
9. Select **Next**



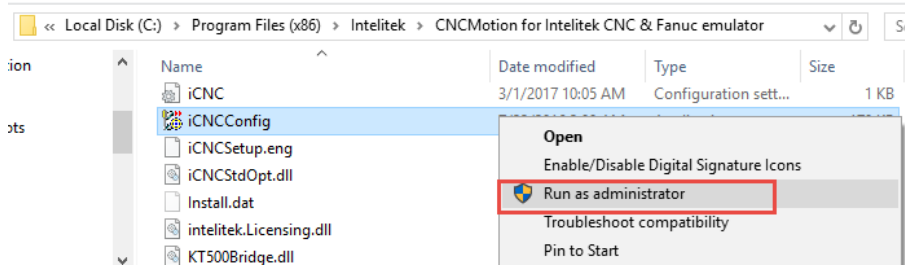
## 10. Select **Install**



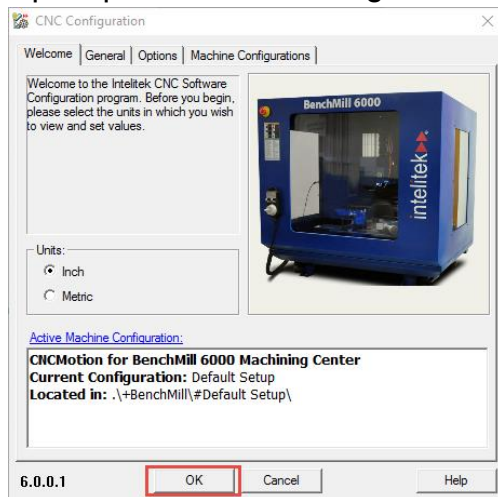
## 11. Select **Yes, I want to restart my computer now.**



## 12. After your computer restarts, right-click on CNC Motion and select **run as administrator**. If no desktop icon is available, run iCNCCConfig as an administrator from *C:\Program Files (x86)\Intelitek\CNCMotion for Intelitek CNC & Fanuc emulator*

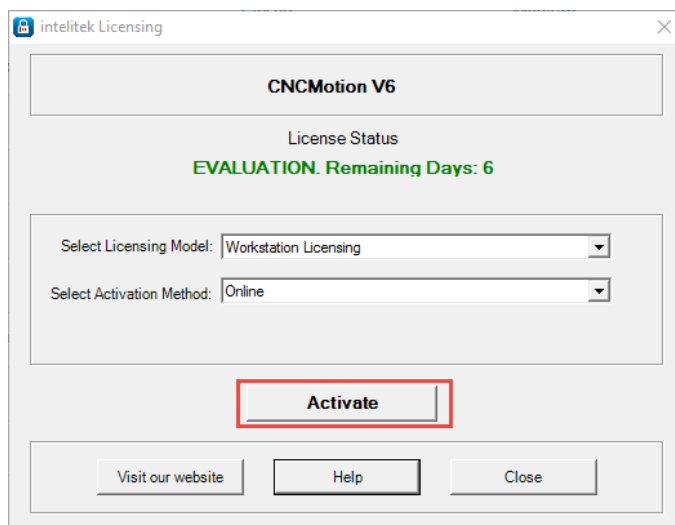


13. If prompted for CNC Configuration, select **OK** then Yes.



**\*\* If using imaging software, do not license the software. Gather the image, and deploy it. License the software after all the machines are imaged. DO NOT license the Master Image. \*\***

14. Select **Activate**



15. Enter the following Product Key then select **OK**:

Product Key: **Contact the Solution Center for the key.**

