

Step 3: LabVIEW/Xilinx 14.7 Drivers Installation Guide

Updated: 2/24/2017

Before you start

1. **Complete Step 1 – Install Multisim 14.0.1** as described in the Multisim Installation Guide.
2. **Complete Step 2 – Install LV Xilinx 14.7 Tools** as described in the LabVIEW/Xilinx 14.7 Tools Installation Guide.

It is imperative that you consult your IT team before you install any software or attempt to change any settings on your computer. Administrative rights are based on a profile created by your System Administrator. Many variations are possible, and these “rights” may not allow you to install this software properly.

Note: This procedure is the second in a four-step process. This step takes about 2 hours to complete.

Prepare Your System

1. Disable the User Account Controls (set to **Never notify**).
2. Disable your anti-virus software.
3. Disable the pop-up blocker in the browser you are using.

Note: You can re-enable these settings after the software is installed and operational.

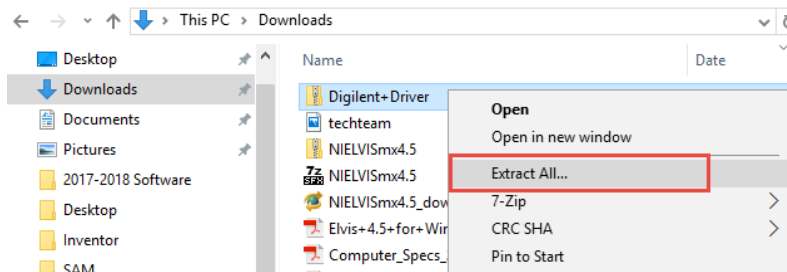
4. Ensure you have permissions to install USB drivers for any Android, Robotics, or other devices that will connect to the computer via USB.

Procedure

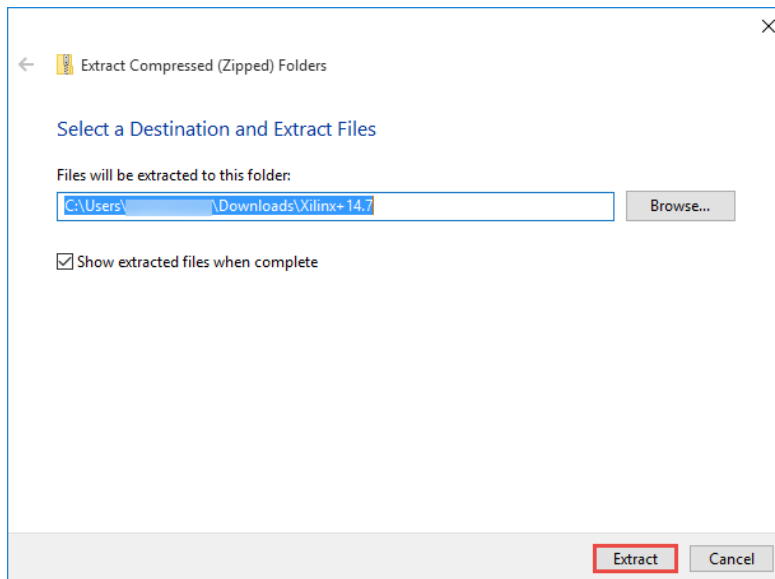
Step 3 – LabVIEW FPGA Xilinx Tools 14.7 Drivers

3. Select the following link to download the installer: <https://s3.amazonaws.com/support-downloads.pltw.org/Installers/Digital+Electronics/Digilent+Driver.zip>

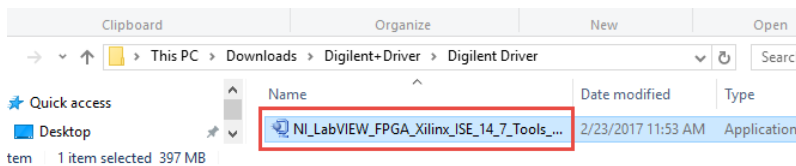
4. Go to the downloaded file in file explorer and right click to select **Extract All**



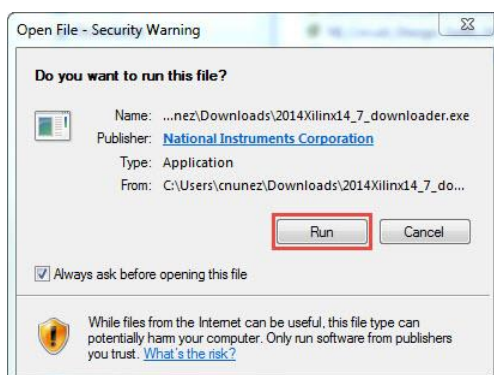
5. Extract the files to a destination where you can easily access them.



6. After it extracts, go to the location where you extracted the files and run the executable **NI_LabVIEW_FPGA_Xilinx_ISE_14_7_Tools_Drivers.exe**.



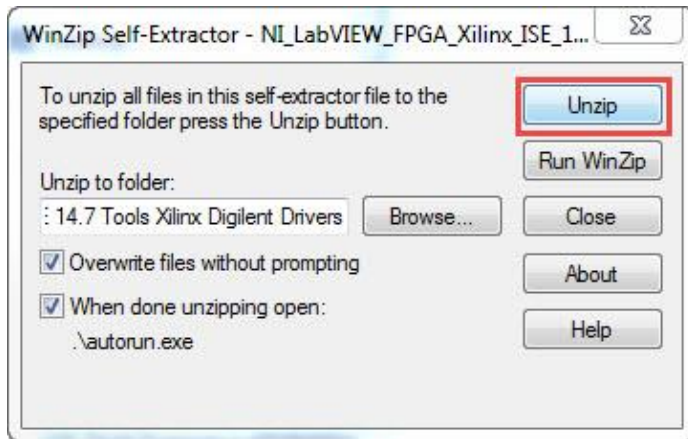
7. If prompted to allow the software to make changes on your computer, select **Run**.



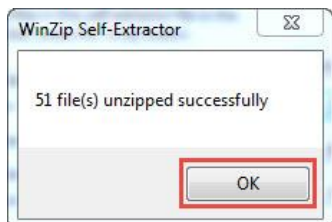
8. On the message box, select **OK**.



9. When prompted, select **Unzip**.



10. When the extraction is complete, select **OK**.

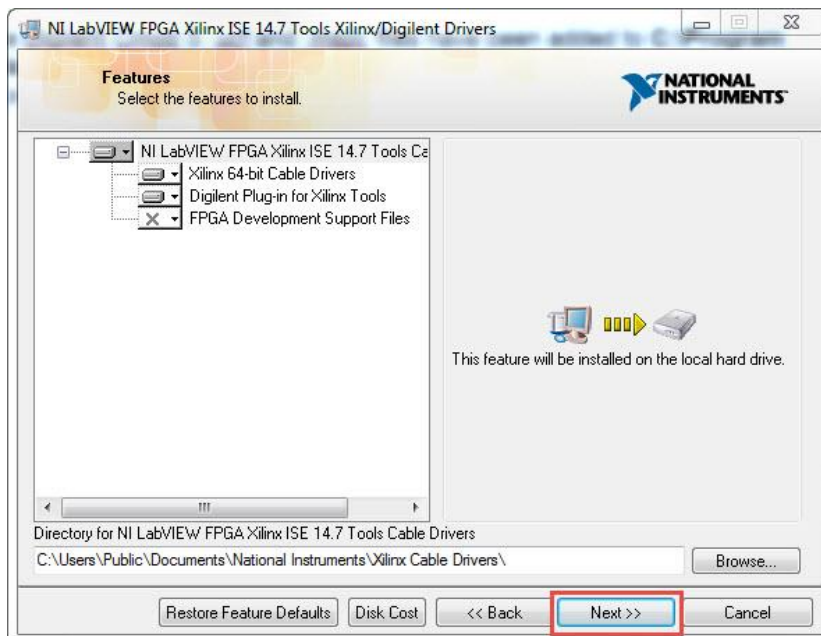


11. If the installer does not launch automatically, run the **Setup** or **Autorun** executable within the unzipped folder.

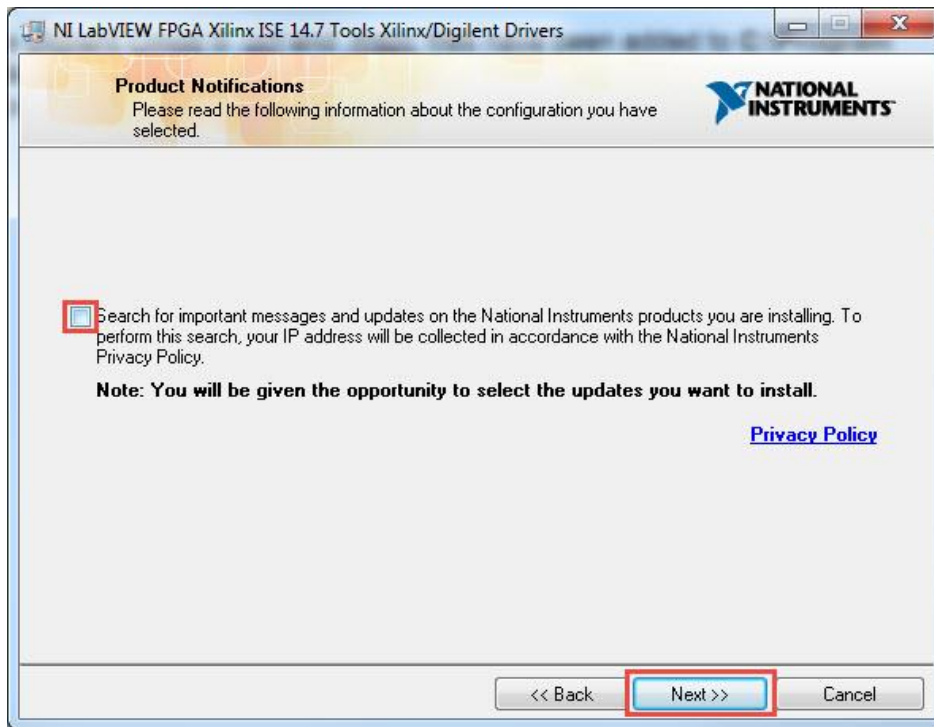
12. On the LabVIEW 2014 splash screen, select **Install NI LabVIEW FPGA Xilinx ISE 14.7 Xilinx Drivers**.



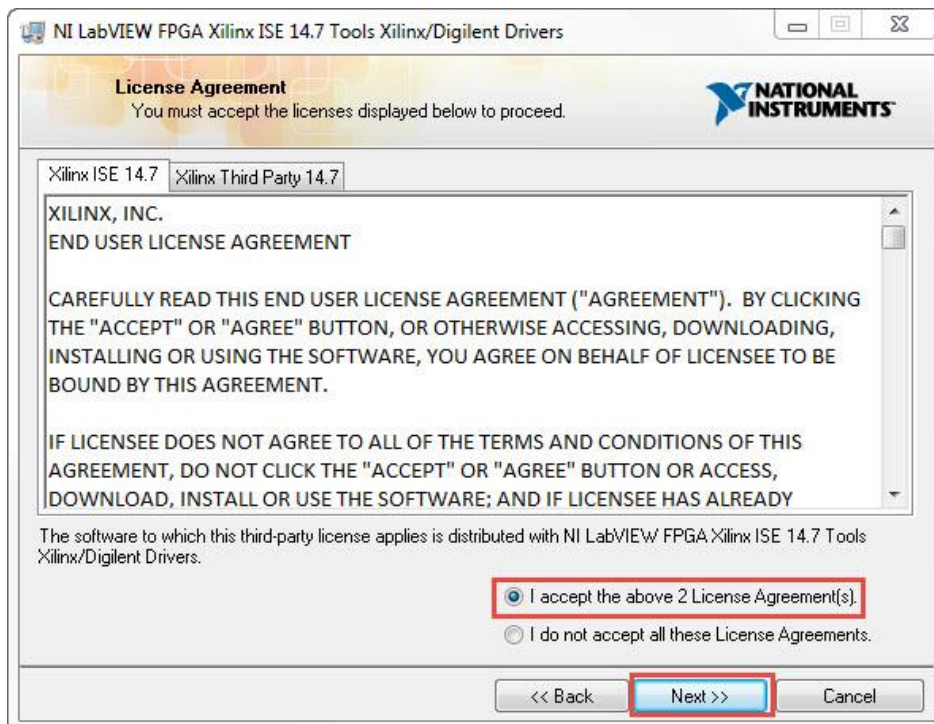
13. In the Features window, select **Next**.



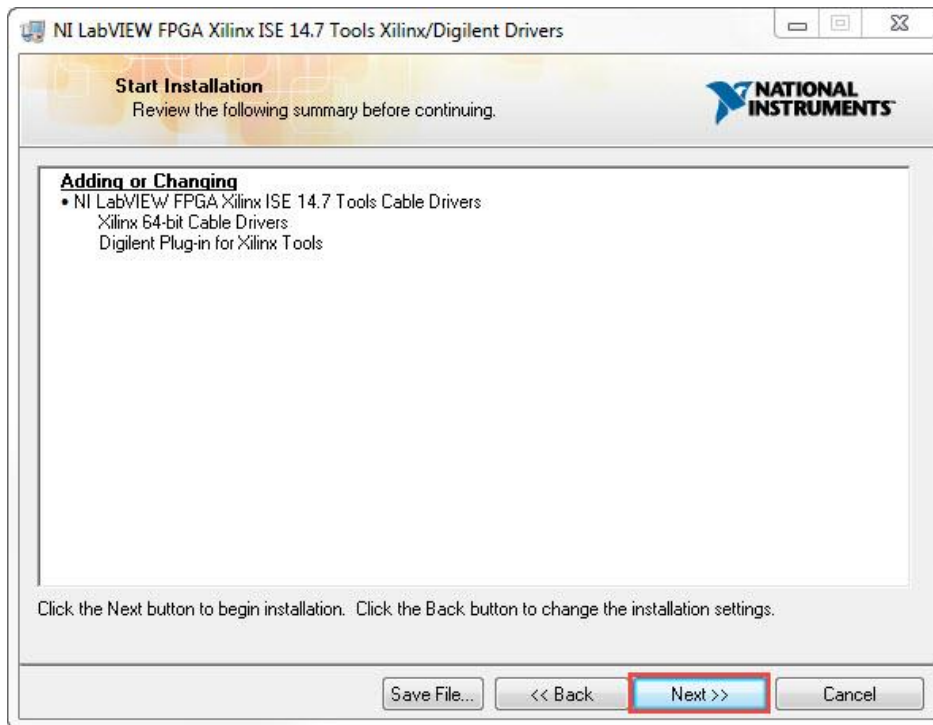
14. Clear the check box and select **Next**.



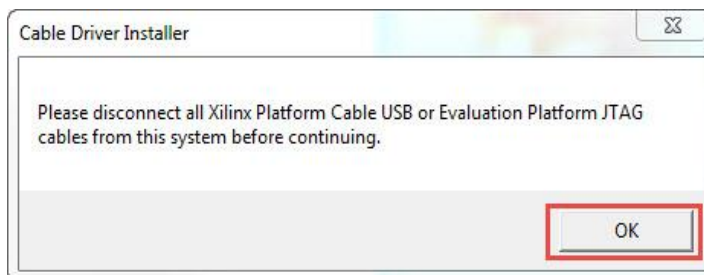
15. For the License Agreement, select **I accept** and then **Next**.



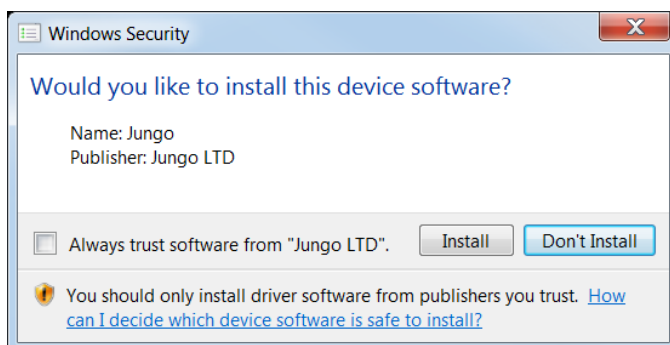
16. On the Start Installation window, select **Next**.



17. Make sure all Xilinx USB cables are disconnected and select **OK**.



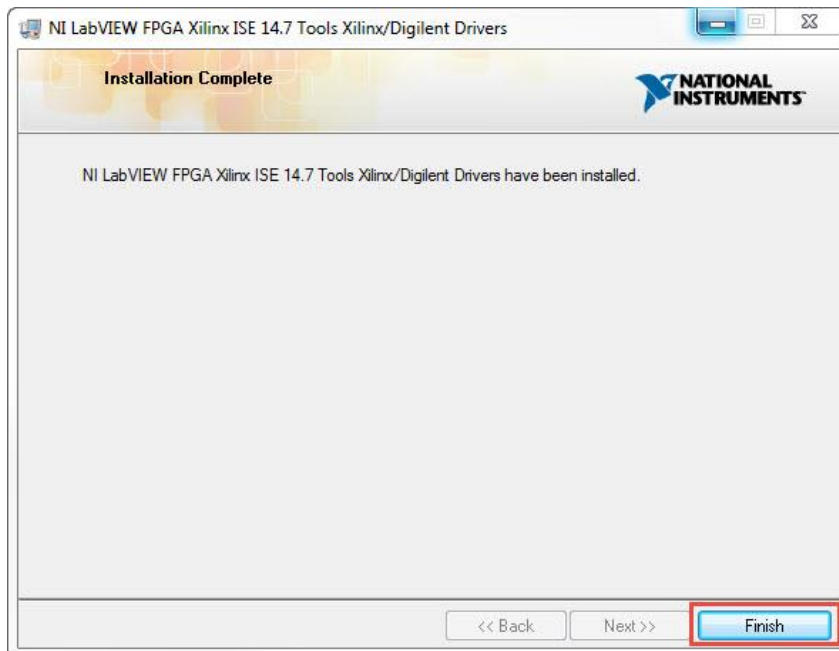
18. When prompted to install Jungo, select **Install**.



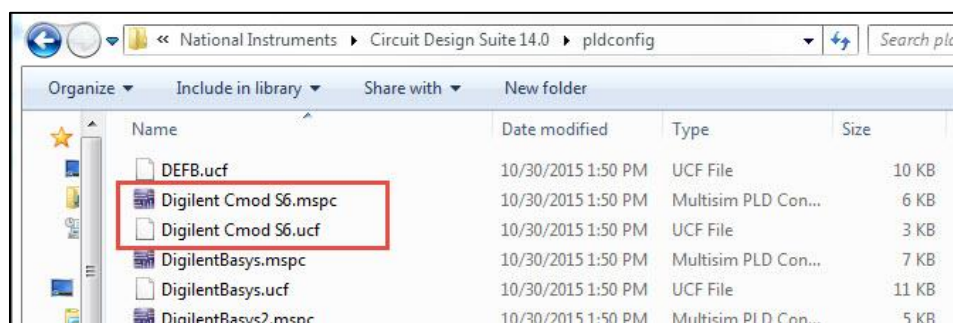
19. When prompted to install Xilinx, select **Install**.



20. When the installation is complete, select **Finish**.



21. Navigate to **C:\Program Files (x86)\National Instruments\Circuit Design Suite 14.0\pldconfig** and verify that the files **Digilent Cmod S6.mspc** and **.ucf** have been added.



22. Continue with the instructions for step 4 in the NI Elvis 4.4 Driver Installation Guide.