

Step 2: LabVIEW/Xilinx 14.7 Tools Installation Guide

Updated: 2/24/2017

Before you start

Complete **Step 1 – Install Multisim 14.0.1** as described in the Multisim Installation Guide.

It is imperative that you consult your IT team before you install any software or attempt to change any settings on your computer. Administrative rights are based on a profile created by your System Administrator. Many variations are possible, and these “rights” may not allow you to install this software properly.

Note: This procedure is the second in a four-step process. This step takes about 2 hours to complete.

Prepare Your System

1. Disable the User Account Controls (set to **Never notify**).
2. Disable your anti-virus software.
3. Disable the pop-up blocker in the browser you are using.

Note: You can re-enable these settings after the software is installed and operational.

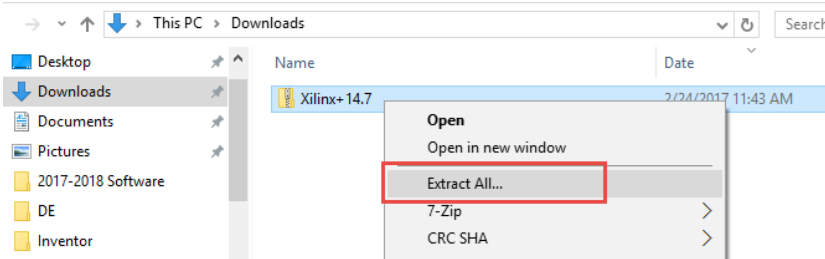
4. Ensure you have permissions to install USB drivers for any Android, Robotics, or other devices that will connect to the computer via USB.

Procedure

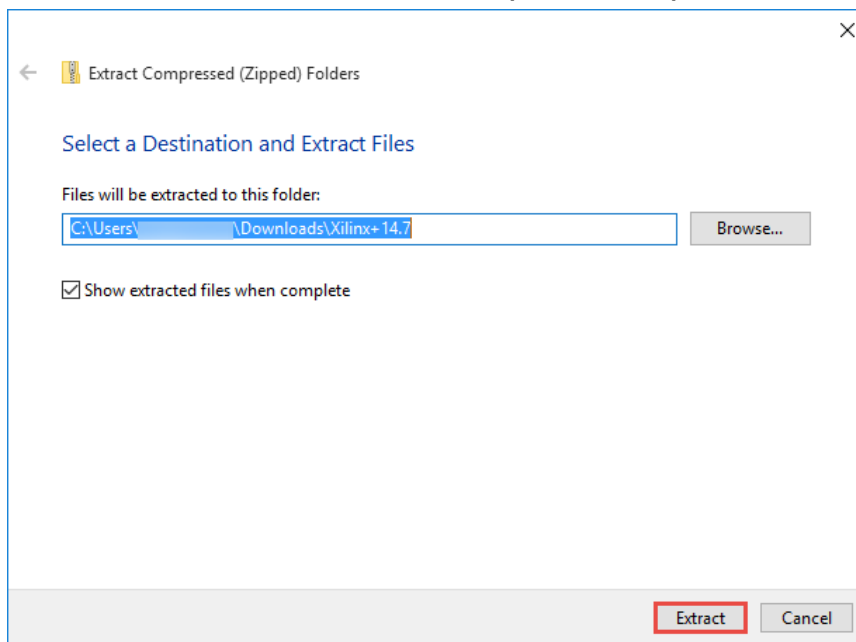
Step 2 – LabVIEW 2014 FPGA Module Xilinx Tools 14.7

1. Select the following link to download the installer: <https://s3.amazonaws.com/support-downloads.pltw.org/Installers/Digital+Electronics/Xilinx+14.7.zip>

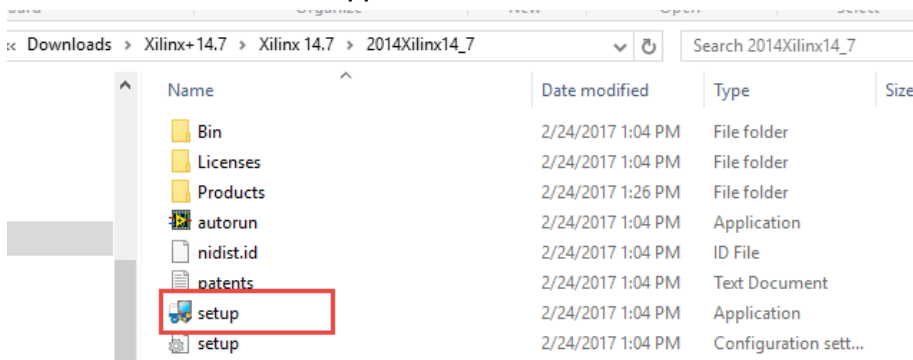
2. Go to the downloaded file in file explorer and right click to select **Extract All**



3. Extract the files to a destination where you can easily access them.



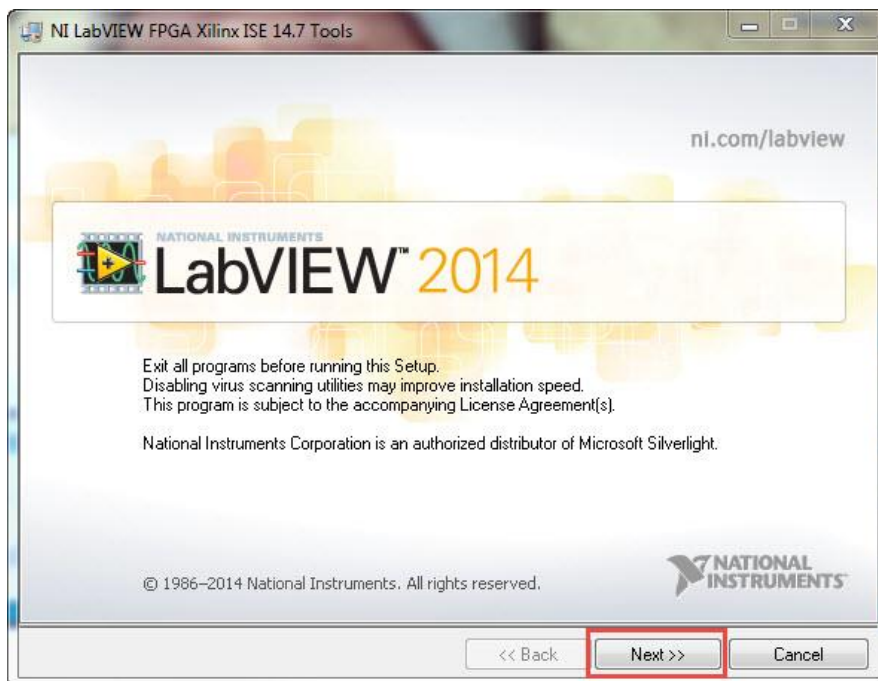
4. After it extracts, go to the location where you extracted the files and run the **Setup** executable within the unzipped folder.



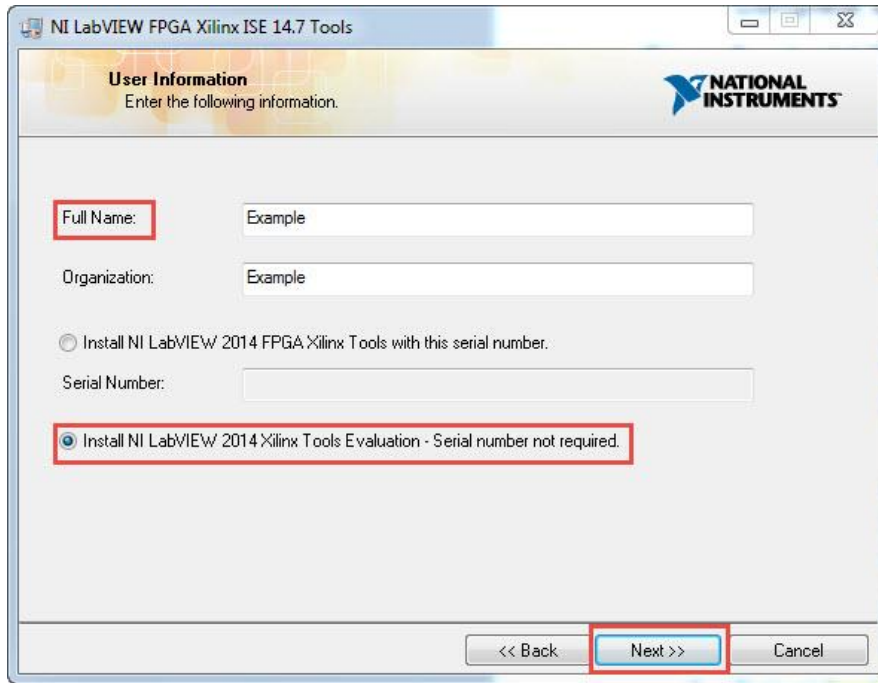
5. On the LabVIEW 2014 splash screen, select **Install NI LabVIEW FPGA Xilinx ISE 14.7 Tools**.



6. On the LabVIEW window, select **Next**.



7. Enter your Name and Organization and select **Serial number not required**, then select **Next**.



NI LabVIEW FPGA Xilinx ISE 14.7 Tools

User Information
Enter the following information.

NATIONAL INSTRUMENTS

Full Name: Example

Organization: Example

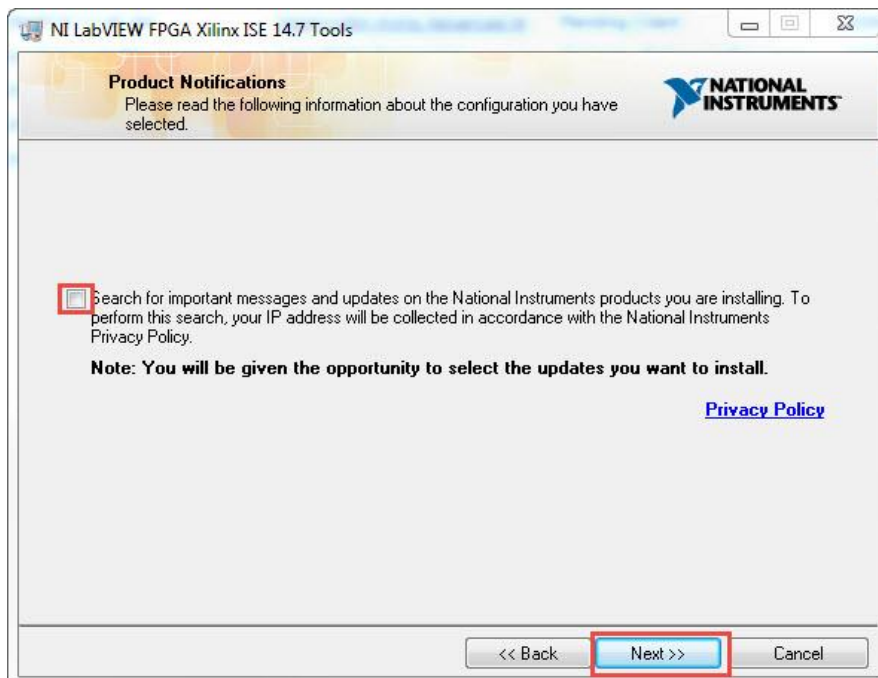
Install NI LabVIEW 2014 FPGA Xilinx Tools with this serial number.

Serial Number:

Install NI LabVIEW 2014 Xilinx Tools Evaluation - Serial number not required.

<< Back Next >> Cancel

8. Clear the check box and select **Next**.



NI LabVIEW FPGA Xilinx ISE 14.7 Tools

Product Notifications
Please read the following information about the configuration you have selected.

NATIONAL INSTRUMENTS

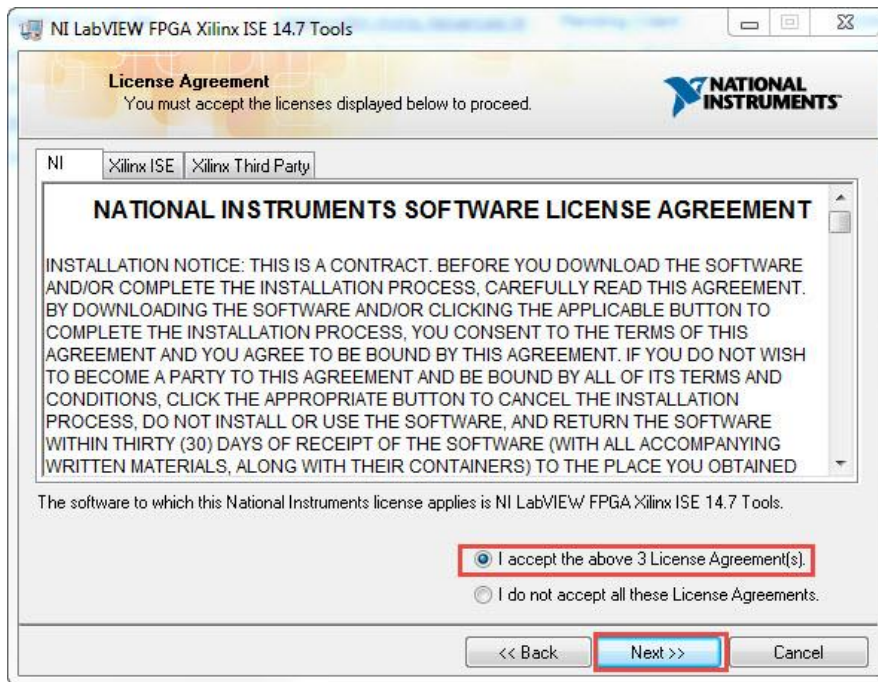
Search for important messages and updates on the National Instruments products you are installing. To perform this search, your IP address will be collected in accordance with the National Instruments Privacy Policy.

Note: You will be given the opportunity to select the updates you want to install.

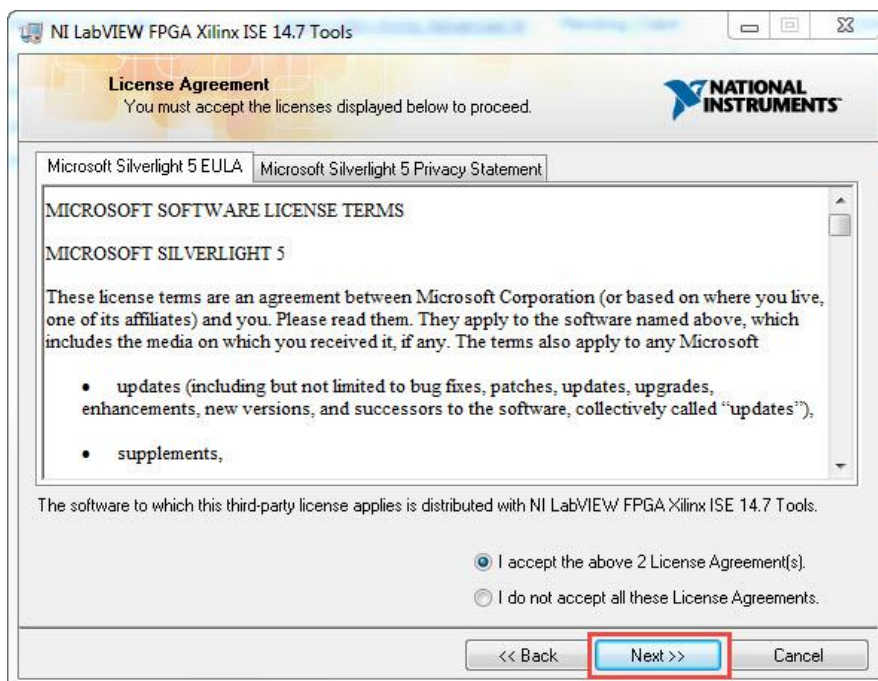
[Privacy Policy](#)

<< Back Next >> Cancel

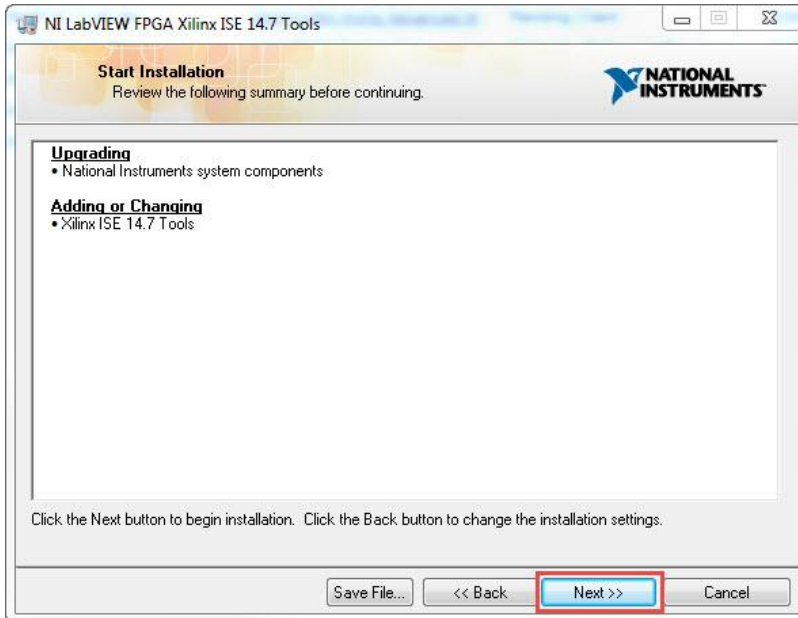
9. For the License Agreement, select **I accept** and then **Next**.



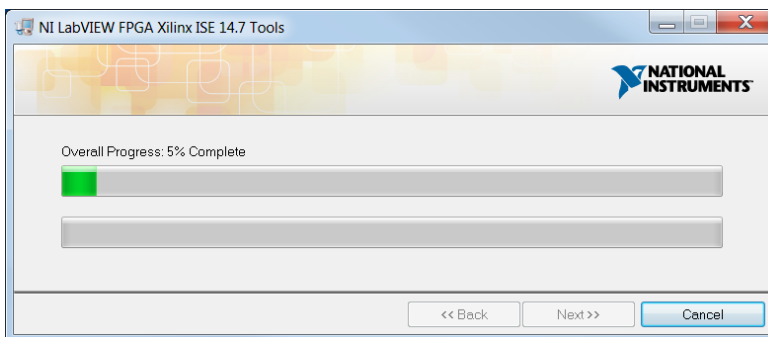
10. Select **Next**.



11. On the Start Installation window, select **Next**.



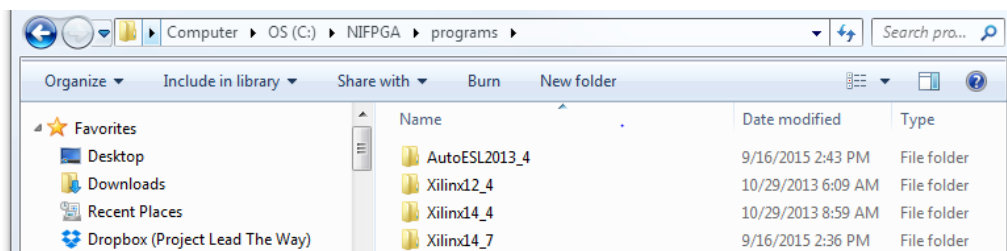
The installation begins to run.



12. When the installation is complete, select Finish.

13. Restart your computer.

The folder **Xilinx 14_7** is located in the following directory: **C:\NIFPGA\programs**. Earlier versions of Xilinx may also be visible.



14. Continue with the instructions for Step 3 in the LV Xilinx 14.7 Drivers Installation Guide.