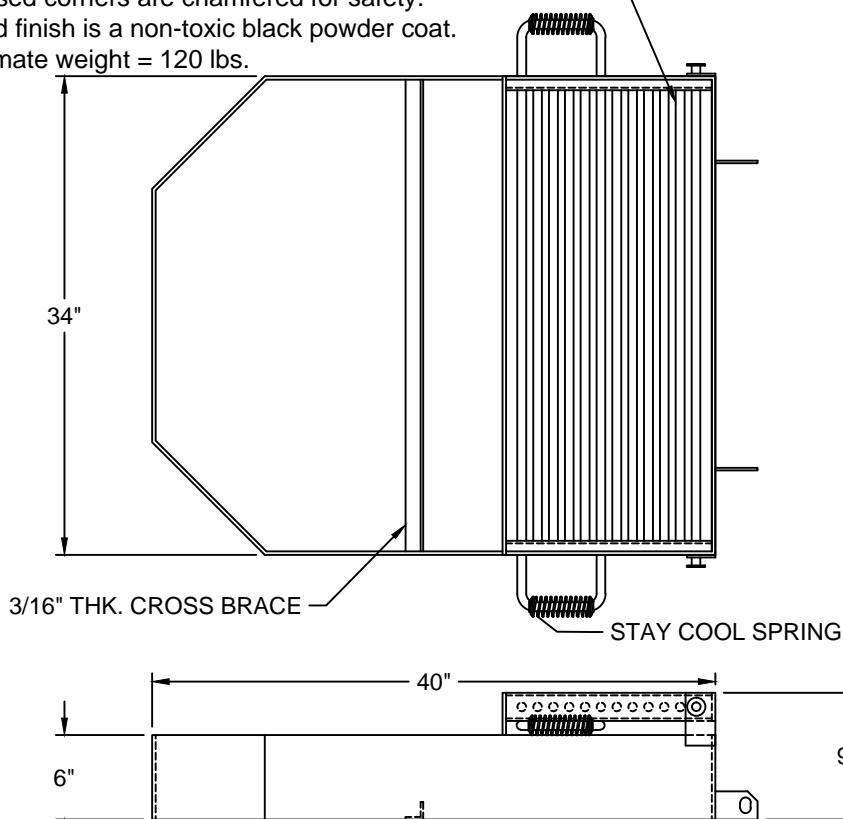


PART NO.	DESCRIPTION
11233	NON-ADJUSTABLE FIRE RING, PAINTED
11233-1	NON-ADJUSTABLE FIRE RING, UNPAINTED
11233-2	NON-ADJUSTABLE FIRE RING, W/S.A. PAINTED
11233-3	NON-ADJUSTABLE FIRE RING, W/S.A. UNPAINTED

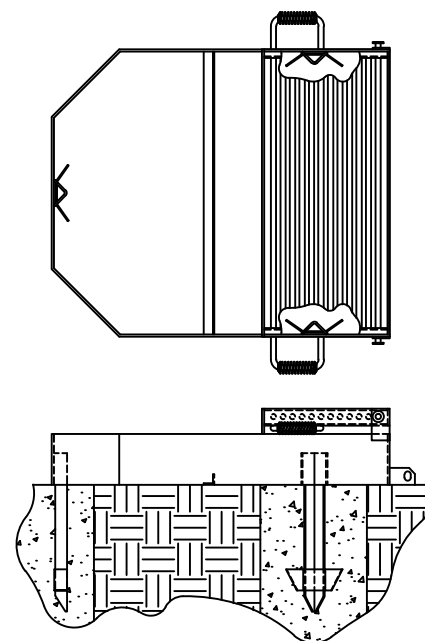
- Fire ring is 34" x 40" x 6" high constructed of 1/4" thick steel (A1011).
- Grate is constructed from 5/8" dia. A36 steel bars located on 1 1/8" centers, and has a cooking area of 517 sq. in. Grate design allows the bars to be secure, but loose, so that the bars can expand when heated. The perimeter of the grate is constructed of 1/4" thick steel and is hinged to allow the grate to tilt back.
- Grate handles are constructed of a 5/8" dia. A36 steel bar with stay cool spring grips suitable for public use.
- Fire ring has a 1" gap between the ring and grate to prevent pinching hazards.
- Ring is mounted using staples that allow the ring to tilt back for ease of cleaning or optional spade anchors. The spade anchors permanently anchor the fire ring to the ground.
- All joints are continuously welded.
- All exposed corners are chamfered for safety.
- Standard finish is a non-toxic black powder coat.
- Approximate weight = 120 lbs.



Ø1/2" STAPLE

GRATE: Ø5/8" STEEL BARS
ON 1 1/8" CENTERS

SPADE ANCHOR (S.A.) OPTION



APPROX. WEIGHT: 130 LBS

NOTE: CUSTOMER TO PROVIDE
CONCRETE (RECOMMENDED)

WARNING: MUST BE PERMANENTLY MOUNTED

CUSTOMER APPROVAL :

DATE :

JAMESTOWN
ADVANCED
PRODUCTS
CORPORATION

THIS DRAWING, WHICH CONTAINS PROPRIETARY INFORMATION, IS THE PROPERTY OF JAMESTOWN ADVANCED PRODUCTS CORPORATION. IT SHALL NOT BE REPRODUCED IN ANY MANNER NOR DISCLOSED TO THIRD PARTIES WITHOUT WRITTEN PERMISSION OF JAMESTOWN ADVANCED PRODUCTS CORPORATION.

PRODUCT PART NUMBER : 11233 (THRU -3)

PRODUCT DESCRIPTION :

34" WIDE x 40" LONG x 6" HIGH FIRE RING

DATE : 1-23-01

REV. NO. 4 12/9/15

2855 GIRTS ROAD
JAMESTOWN, NY 14701

PHONE 800-452-0639 -- FAX 716-483-5398 -- WWW.JAMESTOWNADVANCED.COM