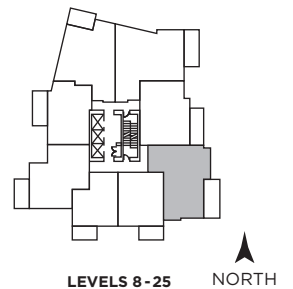
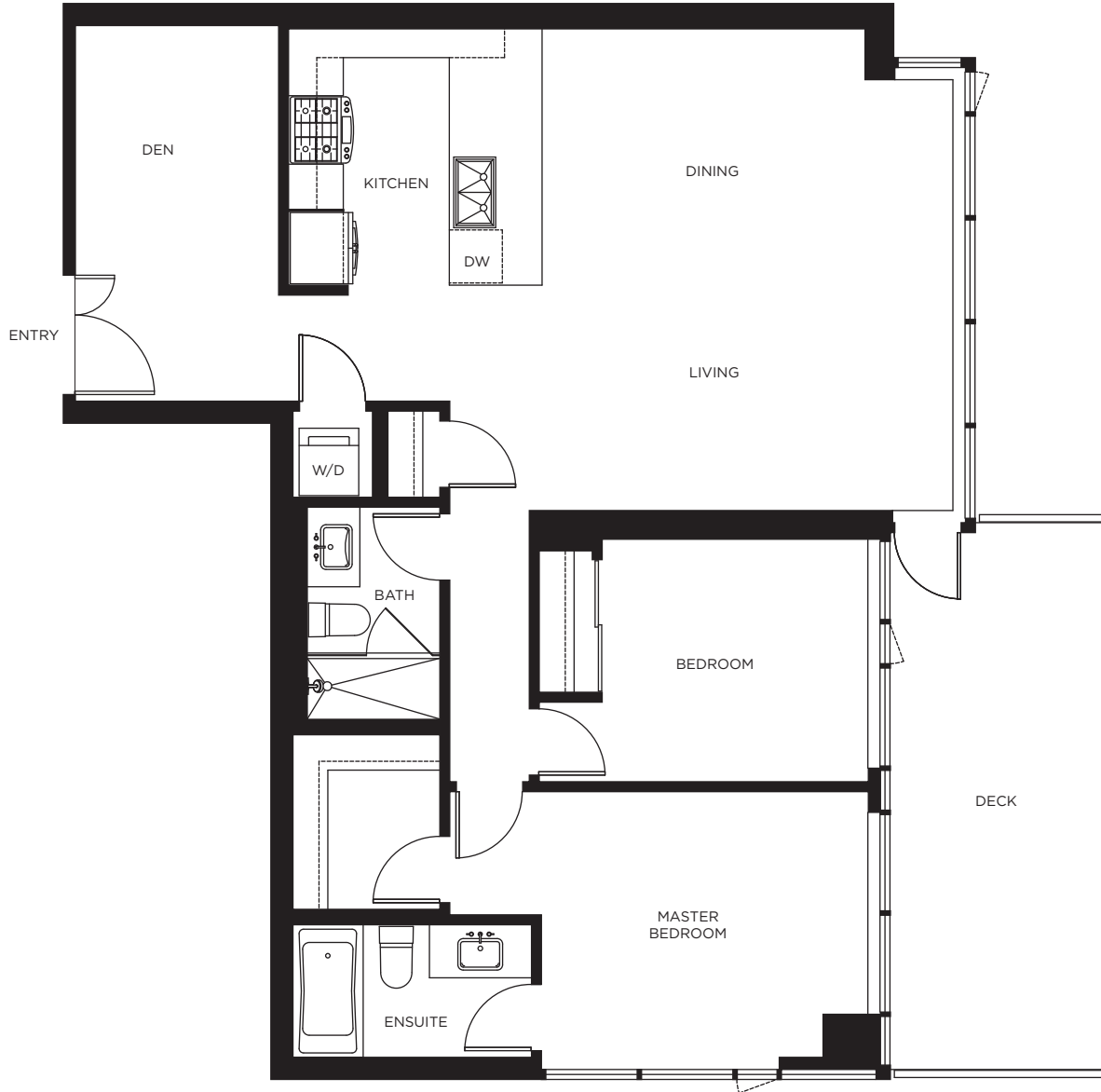


# E PLAN

PULSE

2 BED / 2 BATH + DEN

1,109 SQ FT



The developer reserves the right to change features and specifications without notice. All renderings, floorplans, and siteplans shown in the sales office, brochure and other advertising material are approximate only and are subject to change without notice. E&OE.

# EVOLUTION

RIVERFRONT URBAN LIVING IN EAST VILLAGE