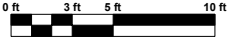
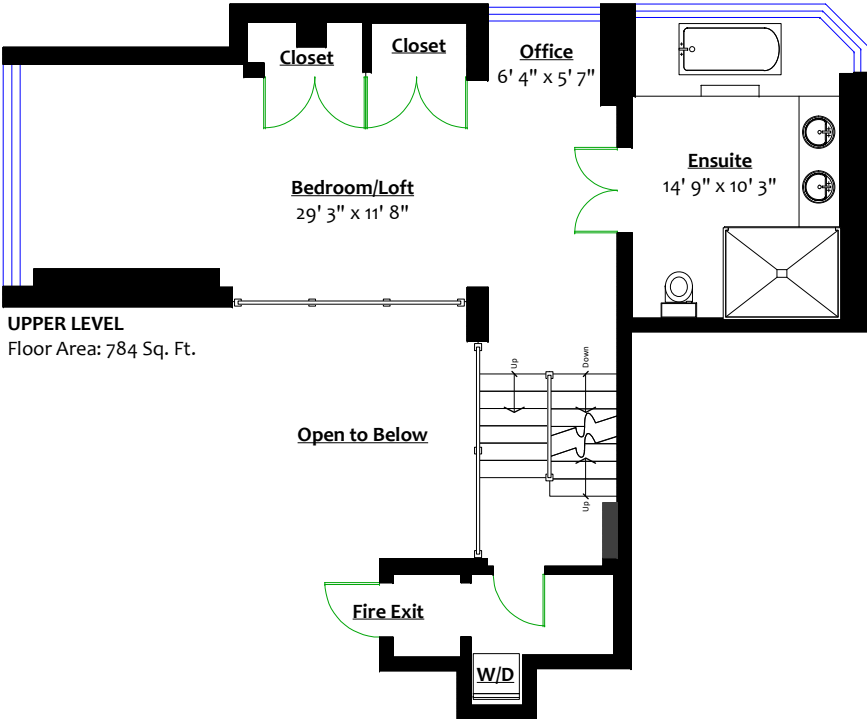
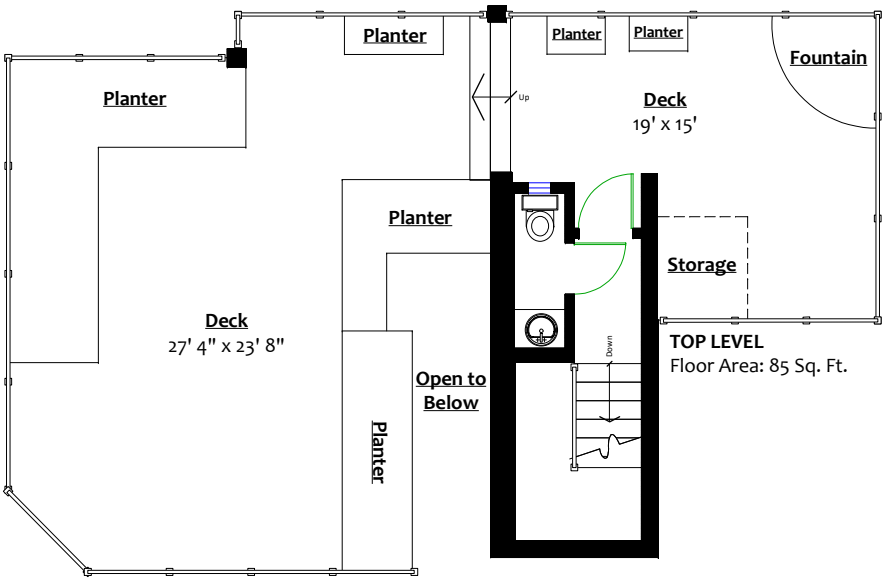
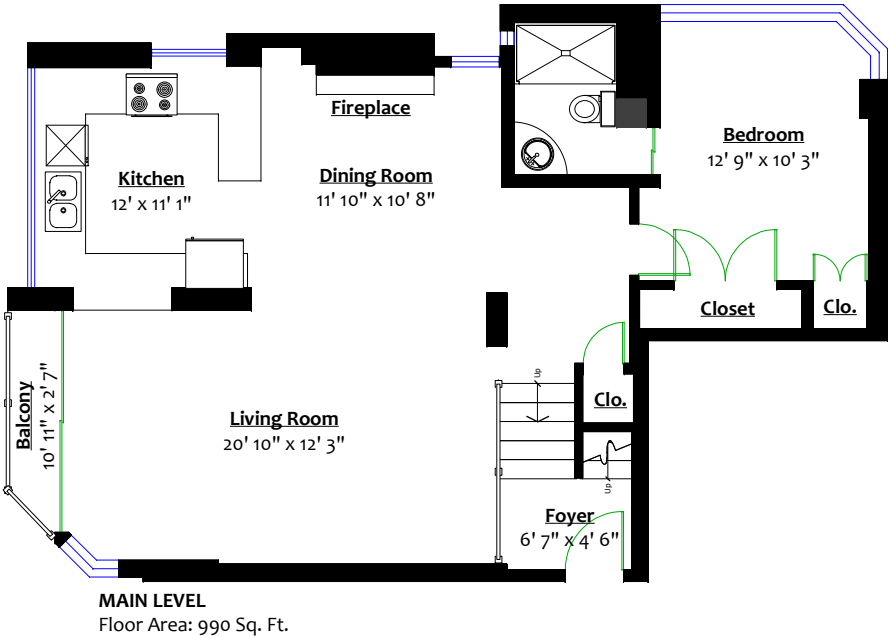


#1601 – 1236 Bidwell Street,
Vancouver, B.C.

Totals**

Main Level:	990 sq. ft.	Balcony:	23 sq. ft.
Upper Level:	784 sq. ft.	Deck:	786 sq. ft.
Top Level:	85 sq. ft.	Total:	809 sq. ft.
Total:	1,859 sq. ft.		



** Approx. based on interior measurements to exterior walls
** Total square footage not taken from original blueprints
** Deck square footage includes planters