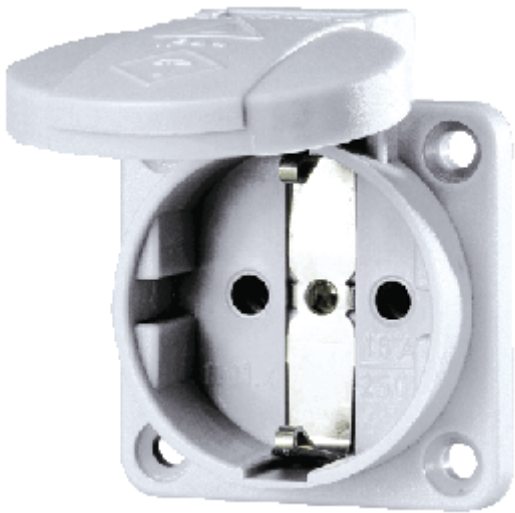
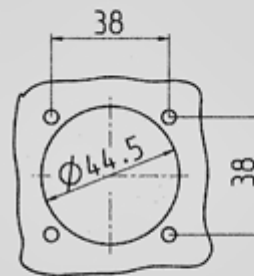
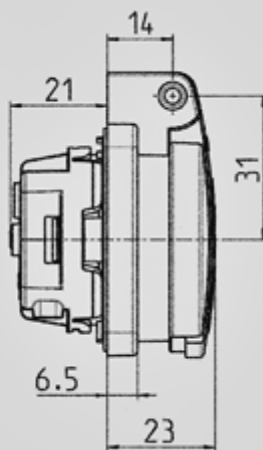
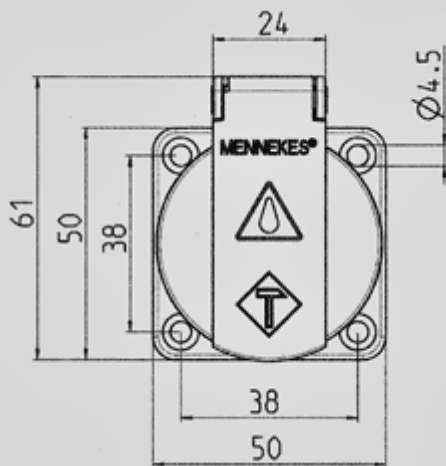


**Panel mounted socket SCHUKO® - Part no. 11010**



- for stationary use
- with hinged lid
- 3 plug-in terminals as connecting terminals for 1.5 – 2.5 mm<sup>2</sup>

Protection type	IP 54
Ampere	16 A
Voltage	230 V
Contact	standard
Connection technology	Plug-in terminals



Installation dimensions in mm

Drawing  
1 MB 410

Dim. in mm