



MILLENNIUM WATER

VANCOUVER'S LAST WATERFRONT COMMUNITY

PLAN A1

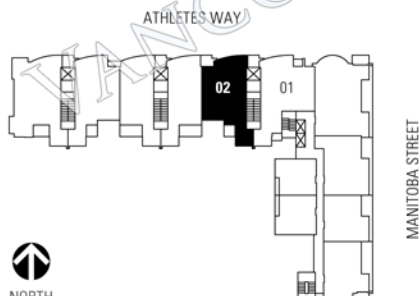
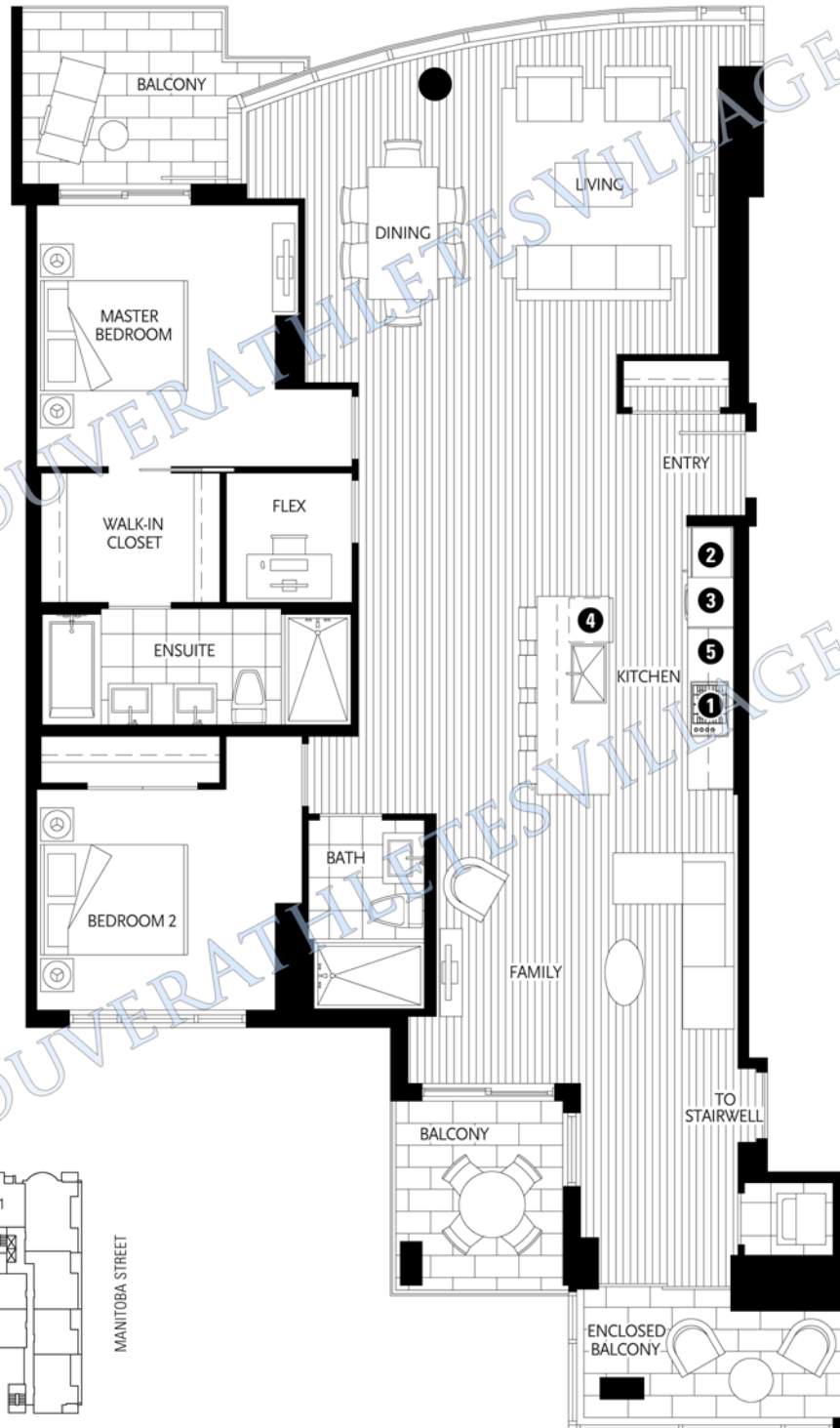
118 ATHLETES WAY

2 BEDROOM + FAMILY + ENCLOSED BALCONY + FLEX

1633 SF LIVING

155 SF BALCONY

- 1 Miele gas cooktop
- 2 Sub-Zero refrigerator
- 3 Miele wall oven & Panasonic built-in microwave
- 4 Miele dishwasher
- 5 Eggersmann of Germany eco-wood cabinetry



5TH FLOOR
ALSO AVAILABLE ON FLOOR 4

Washer/dryer are optional items. Dimensions, sizes, areas, specifications, layouts and materials are approximate only and subject to change without notice. Floorplates and unit numbers may vary between floors and appliance brands and sizes are subject to change. Please see a sales representative for more details. E.&O.E.

