



MILLENNIUM WATER

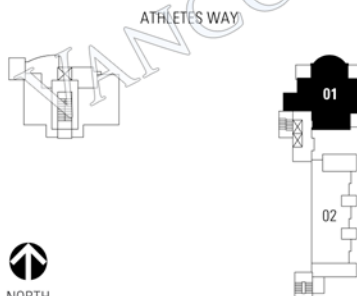
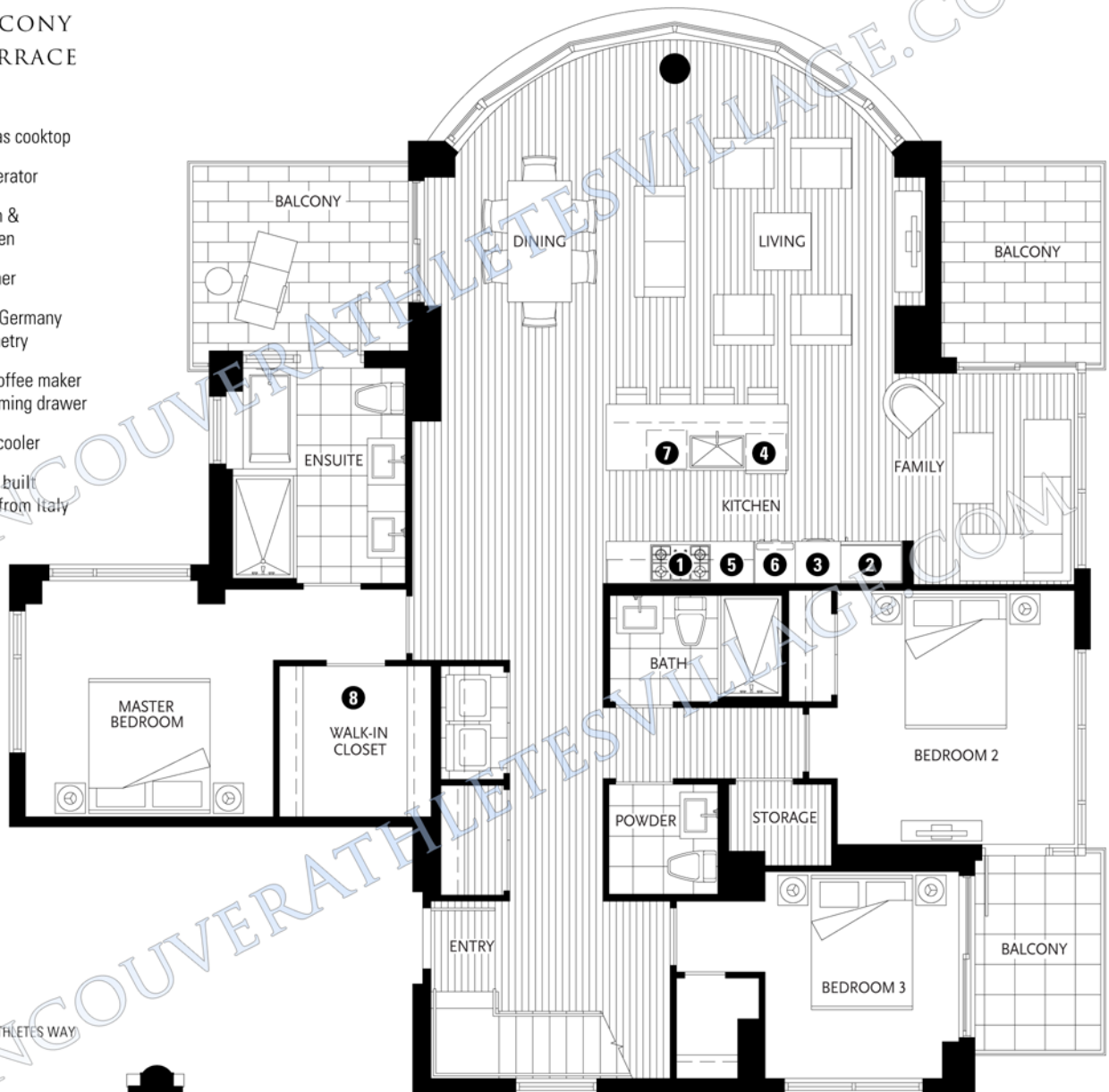
VANCOUVER'S LAST WATERFRONT COMMUNITY

PLAN N LOWER FLOOR

1625 MANITOBA STREET

3 BEDROOM + FAMILY
2116 SF LIVING
186 SF BALCONY
1832 SF TERRACE

- 1 Miele 5-zone gas cooktop
- 2 Sub-Zero refrigerator
- 3 Miele wall oven & Miele speed oven
- 4 Miele dishwasher
- 5 Eggersmann of Germany eco-wood cabinetry
- 6 Miele built-in coffee maker with Miele warming drawer
- 7 Sub-Zero wine cooler
- 8 Cabina custom built walk-in closet from Italy



9TH FLOOR

Washer/dryer are optional items. Dimensions, sizes, areas, specifications, layouts and materials are approximate only and subject to change without notice. Floorplates and unit numbers may vary between floors and appliance brands and sizes are subject to change. Please see a sales representative for more details. E.&O.E.

