



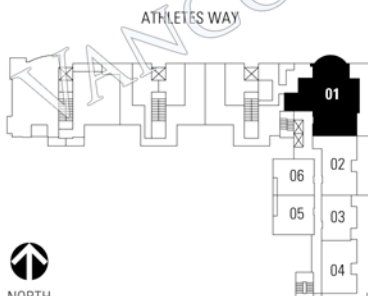
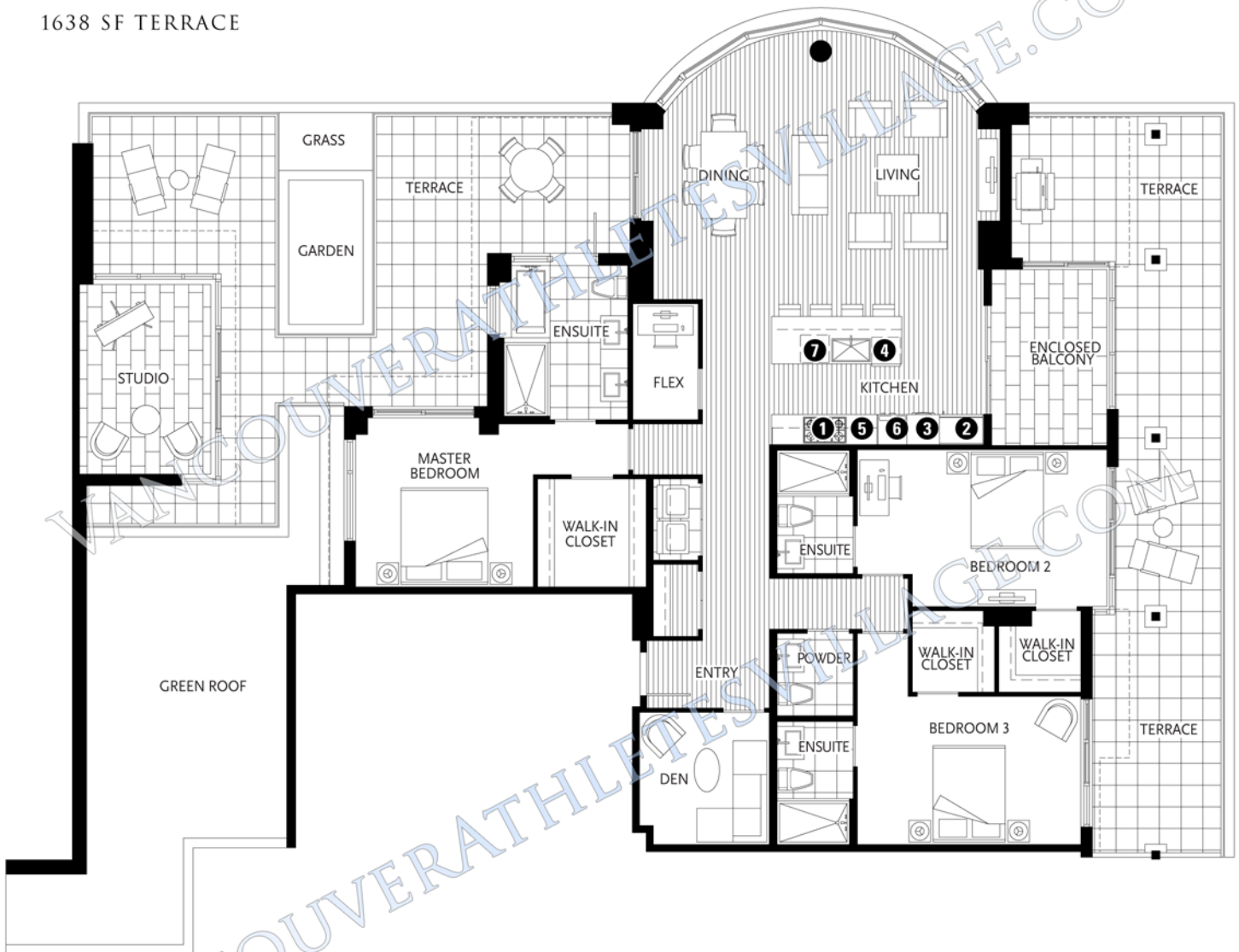
MILLENNIUM WATER

VANCOUVER'S LAST WATERFRONT COMMUNITY

PLAN F

1625 MANITOBA STREET

3 BEDROOM + DEN + ENCLOSED BALCONY + FLEX + STUDIO
2199 SF LIVING
1638 SF TERRACE



- 1 Miele 5-zone gas cooktop
- 2 Sub-Zero refrigerator
- 3 Miele wall oven & Miele speed oven
- 4 Miele dishwasher
- 5 Eggersmann of Germany eco-wood cabinetry
- 6 Miele built-in coffee maker with Miele warming drawer
- 7 Sub-Zero wine cooler

7TH FLOOR

Washer/dryer are optional items. Dimensions, sizes, areas, specifications, layouts and materials are approximate only and subject to change without notice. Floorplates and unit numbers may vary between floors and appliance brands and sizes are subject to change. Please see a sales representative for more details. E.&O.E.

