



# MILLENNIUM WATER

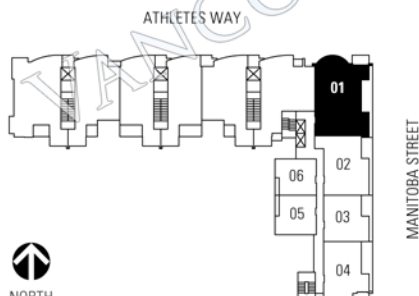
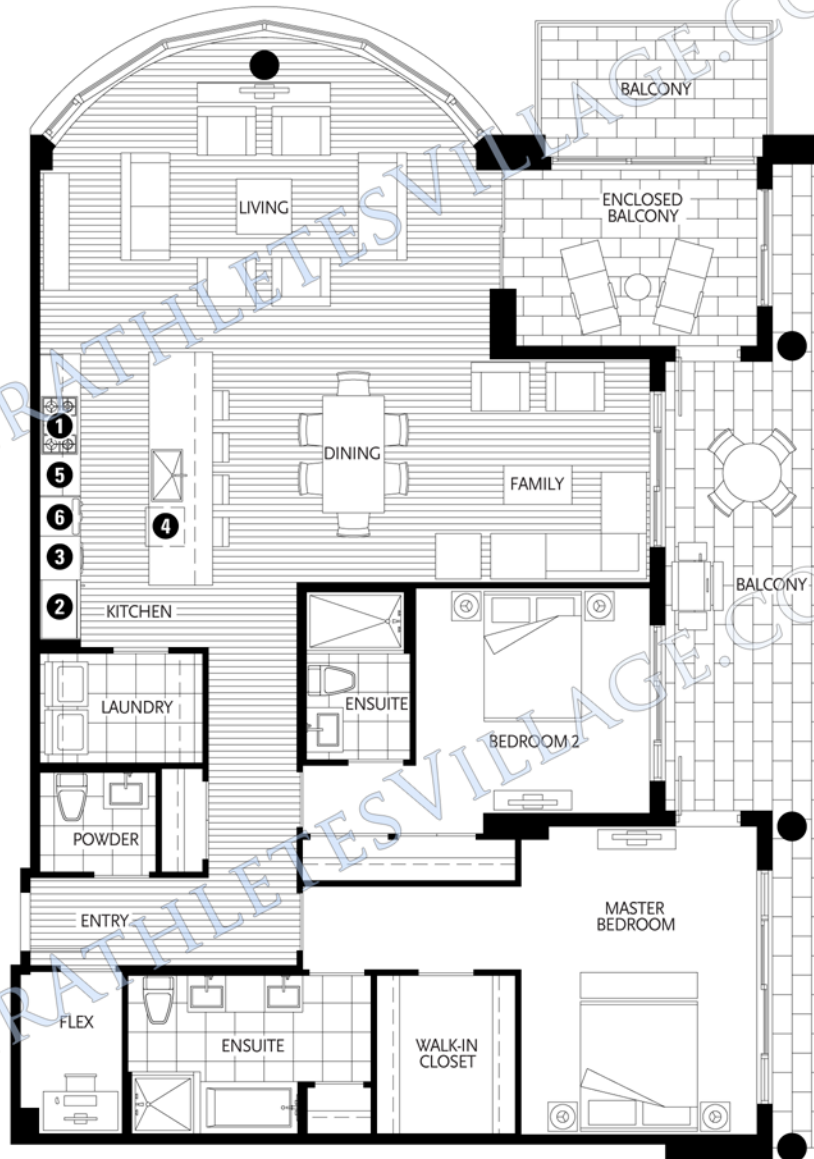
VANCOUVER'S LAST WATERFRONT COMMUNITY

## PLAN A

1625 MANITOBA STREET

2 BEDROOM + FAMILY + ENCLOSED BALCONY + FLEX  
1930 SF LIVING  
374 SF BALCONY

- 1 Miele 5-zone gas cooktop
- 2 Sub-Zero refrigerator
- 3 Miele wall oven & Miele speed oven
- 4 Miele dishwasher
- 5 Eggersmann of Germany eco-wood cabinetry
- 6 Miele built-in coffee maker with Miele warming drawer



**5TH FLOOR**  
ALSO AVAILABLE ON FLOORS 3, 4, 6

Washer/dryer are optional items. Dimensions, sizes, areas, specifications, layouts and materials are approximate only and subject to change without notice. Floorplates and unit numbers may vary between floors and appliance brands and sizes are subject to change. Please see a sales representative for more details. E.&O.E.

