



# MILLENNIUM WATER

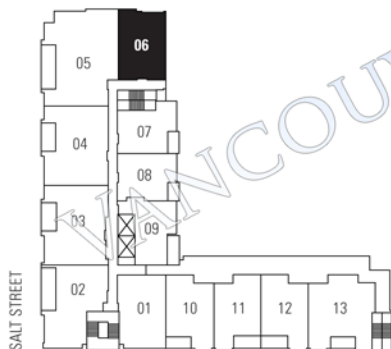
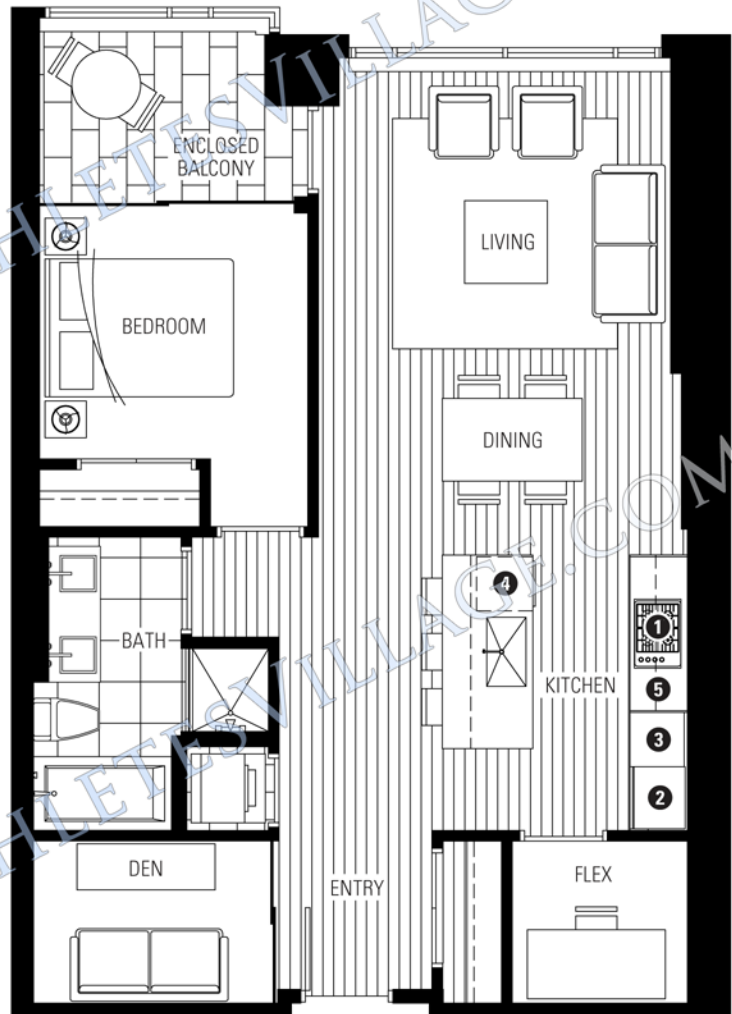
A GREEN WATERFRONT COMMUNITY

## PLAN F

77 WALTER HARDWICK AVENUE

1 BEDROOM + DEN + FLEX + EB  
873 SF LIVING

- 1 Miele gas cooktop
- 2 Sub-Zero refrigerator
- 3 Miele wall oven & Panasonic built-in microwave
- 4 Miele dishwasher
- 5 Eggersmann of Germany eco-wood cabinetry



WALTER HARDWICK AVENUE



### 4TH - 5TH FLOOR

ALSO AVAILABLE ON  
FLOOR 3

Washer/dryer are optional items. Dimensions, sizes, areas, specifications, layouts and materials are approximate only and subject to change without notice. Floor plates will vary between floors and appliance brands and sizes are subject to change. Please see a sales representative for more details. E.&O.E.

