



# MILLENNIUM WATER

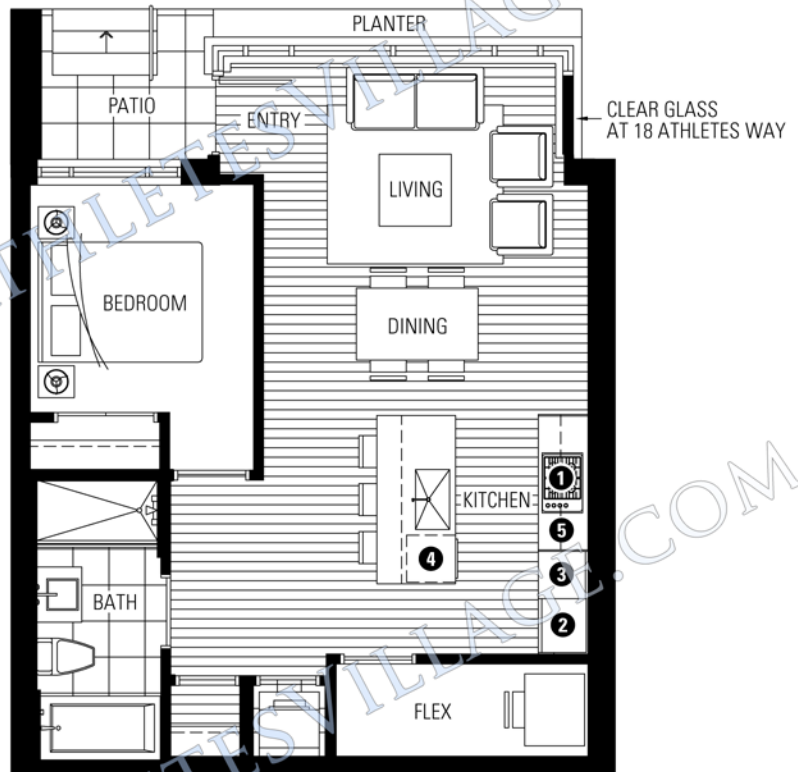
VANCOUVER'S LAST WATERFRONT COMMUNITY

## PLAN K

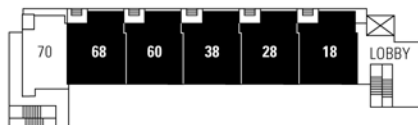
68, 60, 38, 28, 18 ATHLETES WAY

1 BEDROOM + FLEX  
697-706 SF LIVING  
31-40 SF PATIO

- 1 Miele gas cooktop
- 2 Sub-Zero refrigerator
- 3 Miele wall oven & Panasonic built-in microwave
- 4 Miele dishwasher
- 5 Eggersmann of Germany eco-wood cabinetry



ATHLETES WAY



NORTH

### GROUND FLOOR

Washer/dryer are optional items. Dimensions, sizes, areas, specifications, layouts and materials are approximate only and subject to change without notice. Floor plates will vary between floors and appliance brands and sizes are subject to change. Please see a sales representative for more details. E.&O.E.

