



MILLENNIUM WATER

VANCOUVER'S LAST WATERFRONT COMMUNITY

PLAN D

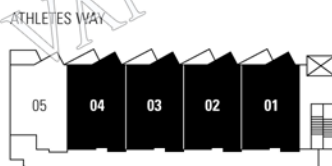
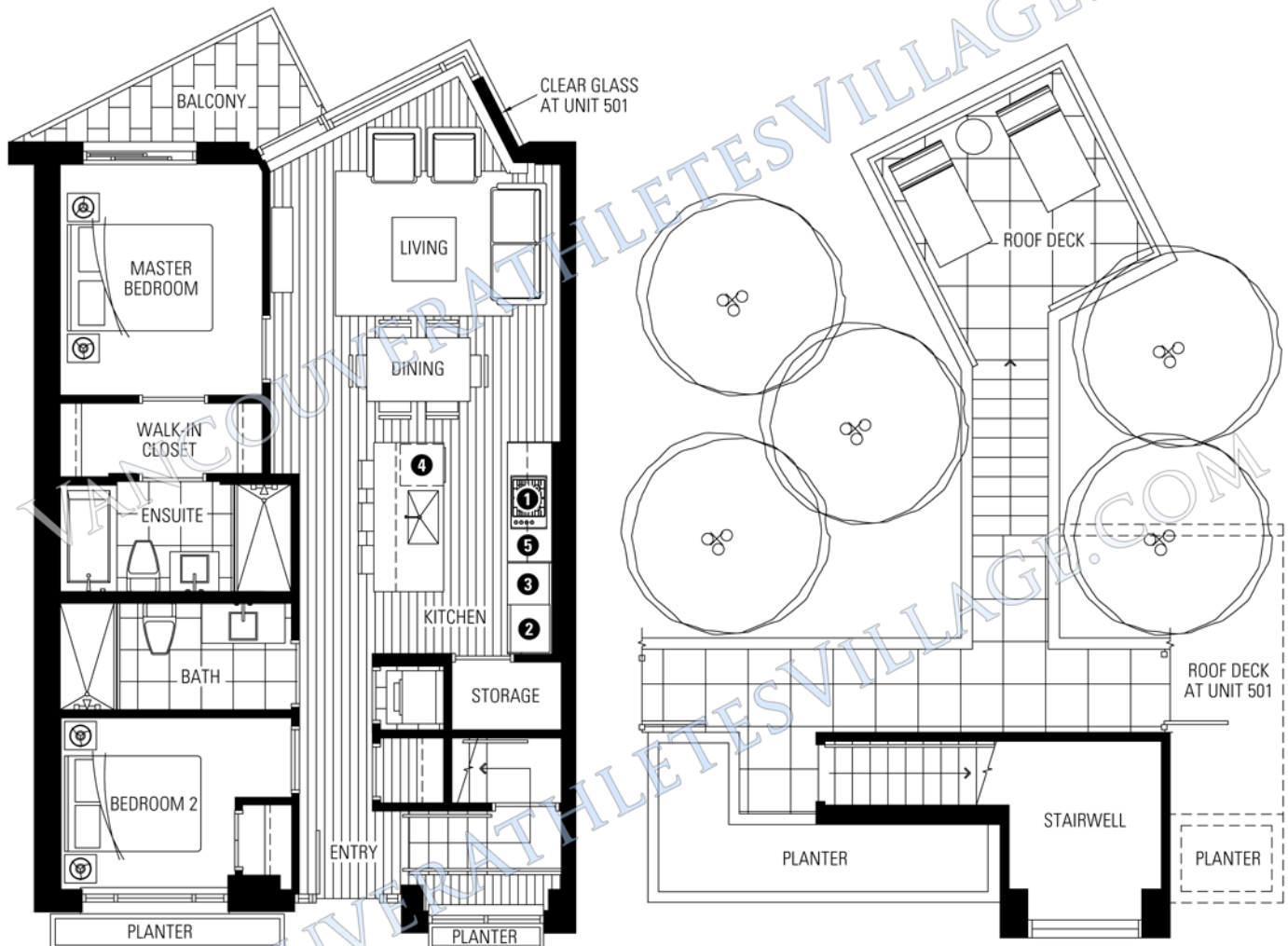
12 ATHLETES WAY

2 BEDROOM + ROOF DECK

912-925 SF LIVING

49 SF BALCONY

524-645 SF ROOF DECK



5TH FLOOR



- 1 Miele gas cooktop
- 2 Sub-Zero refrigerator
- 3 Miele wall oven & Panasonic built-in microwave
- 4 Miele dishwasher
- 5 Eggersmann of Germany eco-wood cabinetry

Washer/dryer are optional items. Dimensions, sizes, areas, specifications, layouts and materials are approximate only and subject to change without notice. Floor plates will vary between floors and appliance brands and sizes are subject to change. Please see a sales representative for more details. E.&O.E.

