



MILLENNIUM WATER

A GREEN WATERFRONT COMMUNITY

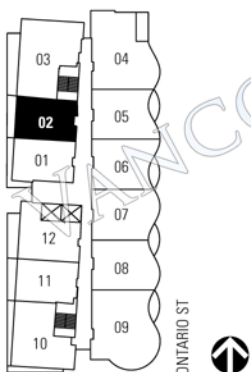
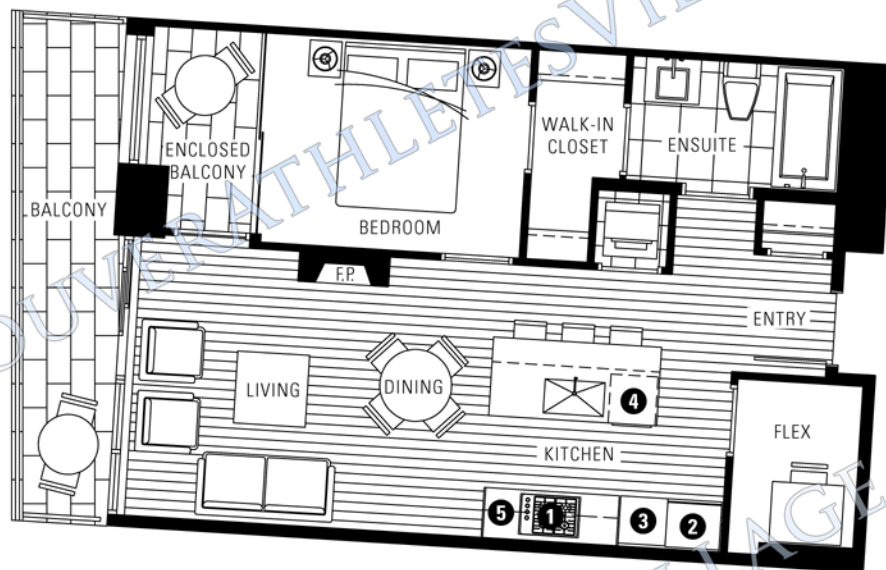
PLAN G2

1 BEDROOM + FLEX + EB

671 SF LIVING

113 SF BALCONY

1661 ONTARIO STREET



WEST FIRST AVE

5TH - 10TH FLOOR

ALSO AVAILABLE ON
FLOORS 3, 4

- 1 Miele gas cooktop with Miele hood
- 2 Sub-Zero refrigerator
- 3 Miele wall oven and Panasonic built-in microwave
- 4 Miele dishwasher
- 5 Eggersmann of Germany eco-wood cabinetry

Fireplace and washer/dryer are optional items. Dimensions, sizes, areas, specifications, layouts and materials are approximate only and subject to change without notice. Floorplates will vary between floors and appliance brands and sizes are subject to change. Please see a sales representative for more details. E.&O.E.

