

CANADA HOUSE

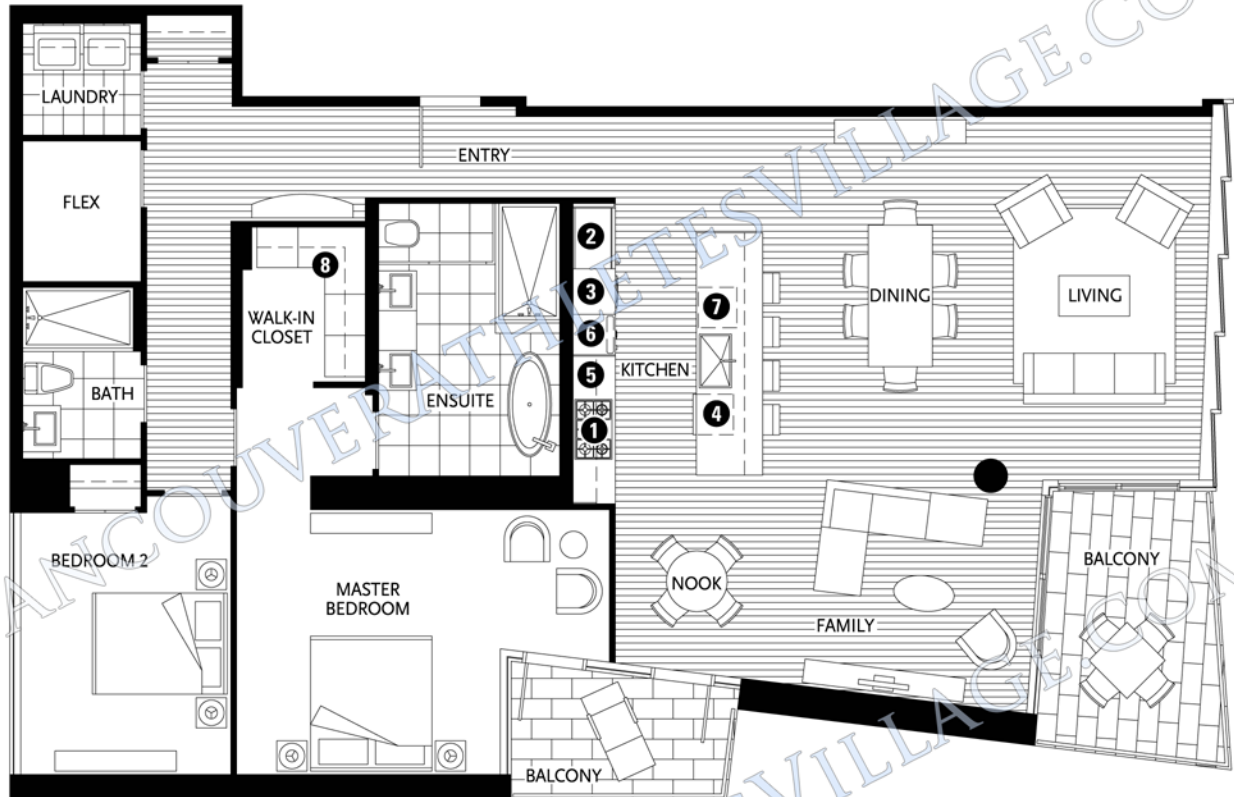
ON THE WATER

PLAN E2E • 151 ATHLETES WAY

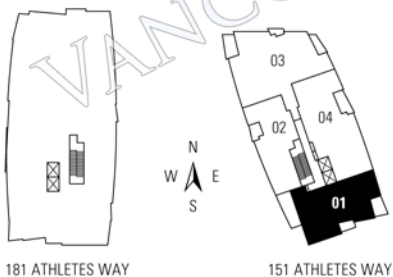
2 Bedroom + Family + Flex

1884 Sf Living

179 Sf Balcony



- 1 Miele 5-zone gas cooktop
- 2 Sub-Zero refrigerator
- 3 Miele wall oven & Miele speed oven
- 4 Miele dishwasher
- 5 Eggersmann of Germany eco-wood cabinetry
- 6 Miele built-in coffee maker with Miele warming drawer
- 7 Sub-Zero wine cooler
- 8 Cabina custom built walk-in closet from Italy



181 ATHLETES WAY

151 ATHLETES WAY

2ND FLOOR

Dimensions, sizes, areas, specifications, layouts and materials shown in these plans are approximate, for information purposes only and should not be relied upon by the buyer. As the strata lot is complete, the buyer must rely on its own viewing of the strata lot to confirm the actual dimensions, sizes, areas, specifications, layouts and materials. Flooring patterns may vary from what is shown in these plans. Please see a sales representative for more details.

1693 MANITOBA STREET
VANCOUVER BC V5Y 0B8

CANADAHOUSEONTHEWATER.COM
604.733.2010

RENNIE
MARKETING
SYSTEMS