

# Expedition Station Condo FOR SALE

Suite 5 - 7450 Prospect St., Pemberton, BC



## NEWLY RENOVATED, SUPER CENTRAL, 2 BEDROOM TOP FLOOR CORNER UNIT

Enjoy the convenience of living by downtown Pemberton in this nicely updated 2 bedroom, 2 bathroom suite with high ceilings and plenty of natural sunlight. The open plan corner unit on the top floor offers privacy and great views while features include laminate flooring, LED lighting, energy efficient thermostats, ceiling fan, and in-suite laundry. A large, private, covered deck is perfect for BBQ's and entertaining. Low density with only 8 units in the building.

LISTED AT \$579,000

📞 (604) 230-8167 ✉️ [Frank@Frankingham.com](mailto:Frank@Frankingham.com)

F R A N K I N G H A M . C O M

Connecting Vancouver, Sea to Sky, and Pemberton Buyers and Sellers.



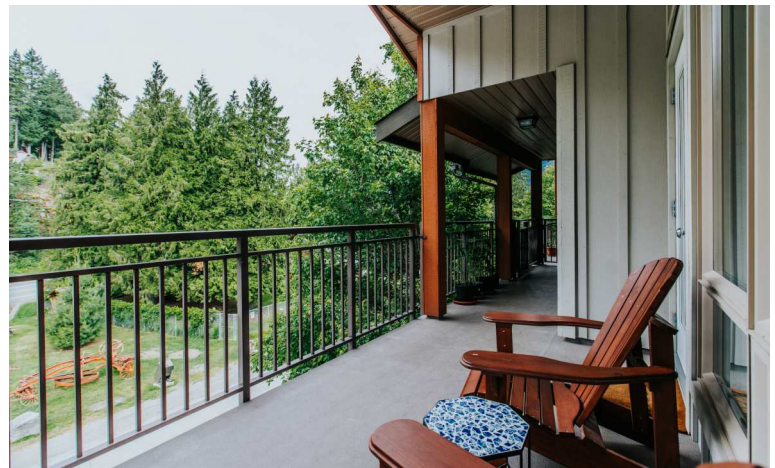
**FRANK  
INGHAM**  
REAL ESTATE





# Home & Property FEATURES

Suite 5 - 7450 Prospect St., Pemberton, BC



## SPACIOUS, CLEAN, CONTEMPORARY INTERIOR

- 916 sq ft 2 bed/2 bath suite with high ceilings and plenty of light
- Open plan top floor corner unit offers a quiet setting and great views
- Laminate flooring, LED lighting, new back splash, energy efficient thermostats, ceiling fan, fireplace, and in-suite laundry
- Storage includes a pantry and walk-in closet with plenty of shelving
- Large, private, covered deck perfect for BBQ's and entertaining
- Double length one car garage with storage plus visitor parking
- Wired for fibre optics, mail boxes on-site, rentals and pets allowed
- Steps to all services and amenities in the heart of Pemberton

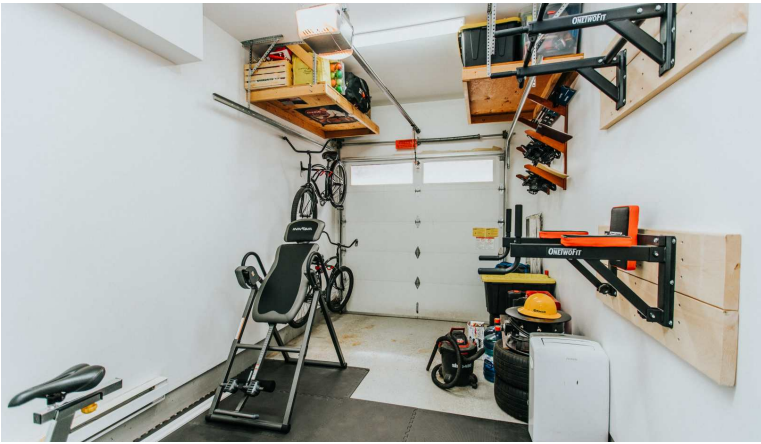
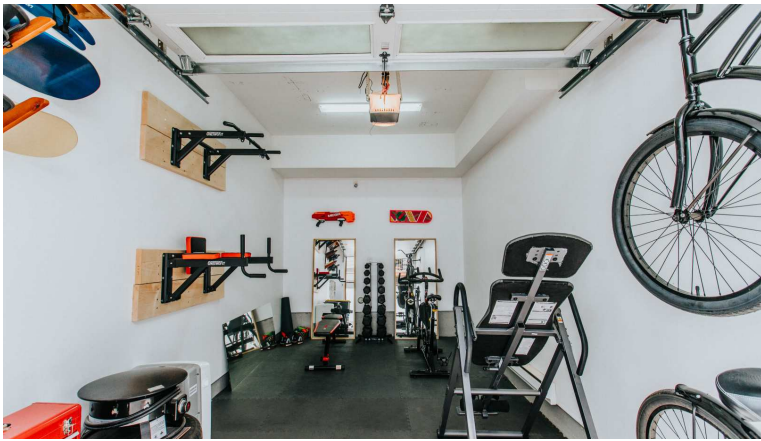
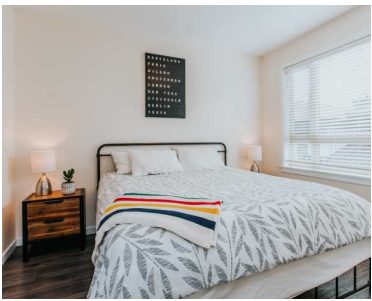
Connecting Vancouver, Sea to Sky, and Pemberton Buyers and Sellers.



**FRANK  
INGHAM**  
REAL ESTATE



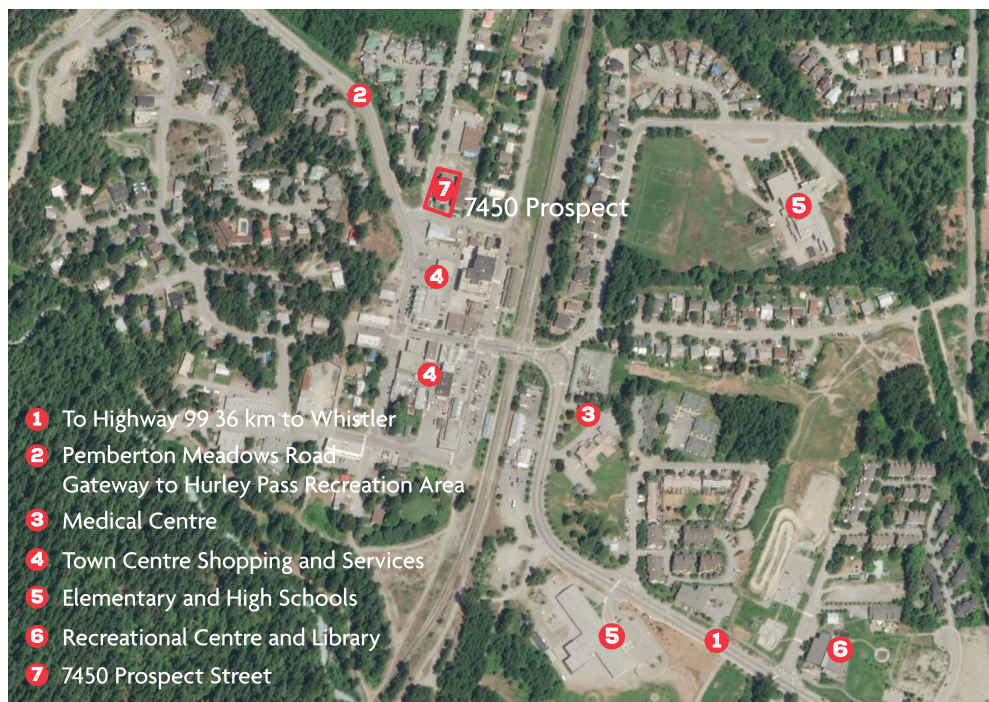






# LOCATION

Suite 5 - 7450 Prospect St., Pemberton, BC



## DOWNTOWN PEMBERTON, 25 MINUTES TO WHISTLER, 2 HOURS TO VANCOUVER

Pemberton is a beautiful 25 minute drive north of Whistler, ranked one of the world's top four season destination resorts. Located at the foot of majestic Mt. Currie, the Pemberton Valley is the gateway to everything outdoors. A lovely rural family and farming community, Pemberton is centrally located for easy access to Whistler, beautiful lakes and rivers, golf, and back country adventure.

LISTED AT \$579,000

☎ (604) 230-8167 ✉ [frank@frankingham.com](mailto:frank@frankingham.com)

[FRANKINGHAM.COM](http://FRANKINGHAM.COM)

Connecting Vancouver, Sea to Sky, and Pemberton Buyers and Sellers.



**FRANK  
INGHAM**  
REAL ESTATE

