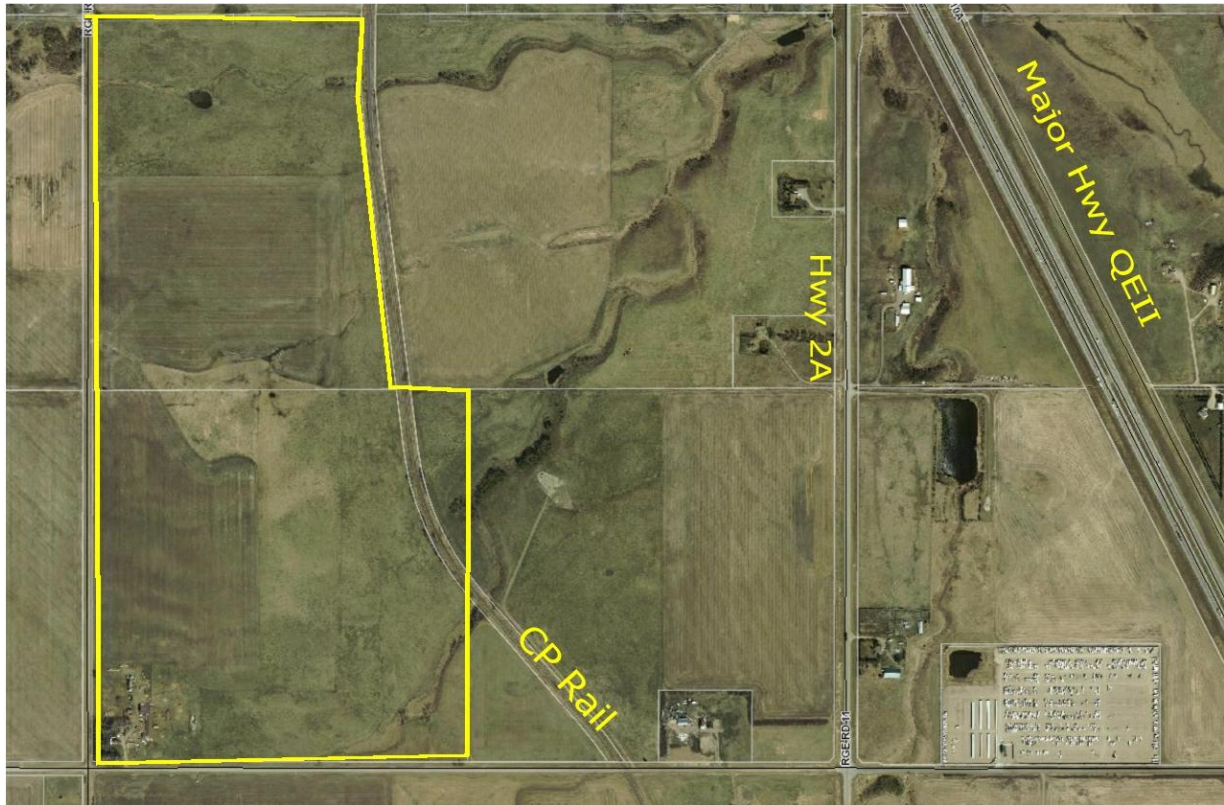


Rural Rocky View County, Alberta, Canada



Property Details

Land Parcel Size	279 acres
Site Location	West ½ section 2 township 29 Range 1 west of 5 meridian
Asking Price	\$3,398,000 (\$12,179/acre)
Zoning	RF
Taxes	\$1,800.

Property Highlights

- Possible access to CP Rail
- Services close by
- Easy access to Hwy QEII, 72, 9, 1 and Stoney Trail allowing direct access to major trading centres
- No business tax
- Land is located in the County of Rocky View and borders the Town of Crossfield.
- 40 minute drive to downtown Calgary

Rural Rocky View County, Alberta, Canada

Looking for somewhere to set up your business? Here is a great opportunity to design this space exactly as you need it to be. This location offers many benefits such as lower purchase price than comparable properties close to or within the surrounding cities and there are no business taxes to be paid. Being situated between the growing communities of Crossfield and Carstairs, there is opportunity to hire local employees or bring your own. Residential homes save you and your employees money as housing prices are lower than city homes. Both communities offer a great combination of country and urban living. Residents have easy access to work, shopping, recreational/cultural attractions, and educational institutions.

With Calgary and Airdrie continuously expanding north, the potential for long-term land appreciation make this property a good solid investment.





www.donsackett.com

DON SACKETT Realtor | Broker
RE/MAX ACA REALTY

Crossfield • Carstairs • Didsbury • Olds •
Calgary and Surrounding Areas

B: 403.946.5657 | M: 403.650.0316

E: donsackett@remax.net

RE/MAX
COMMERCIAL®