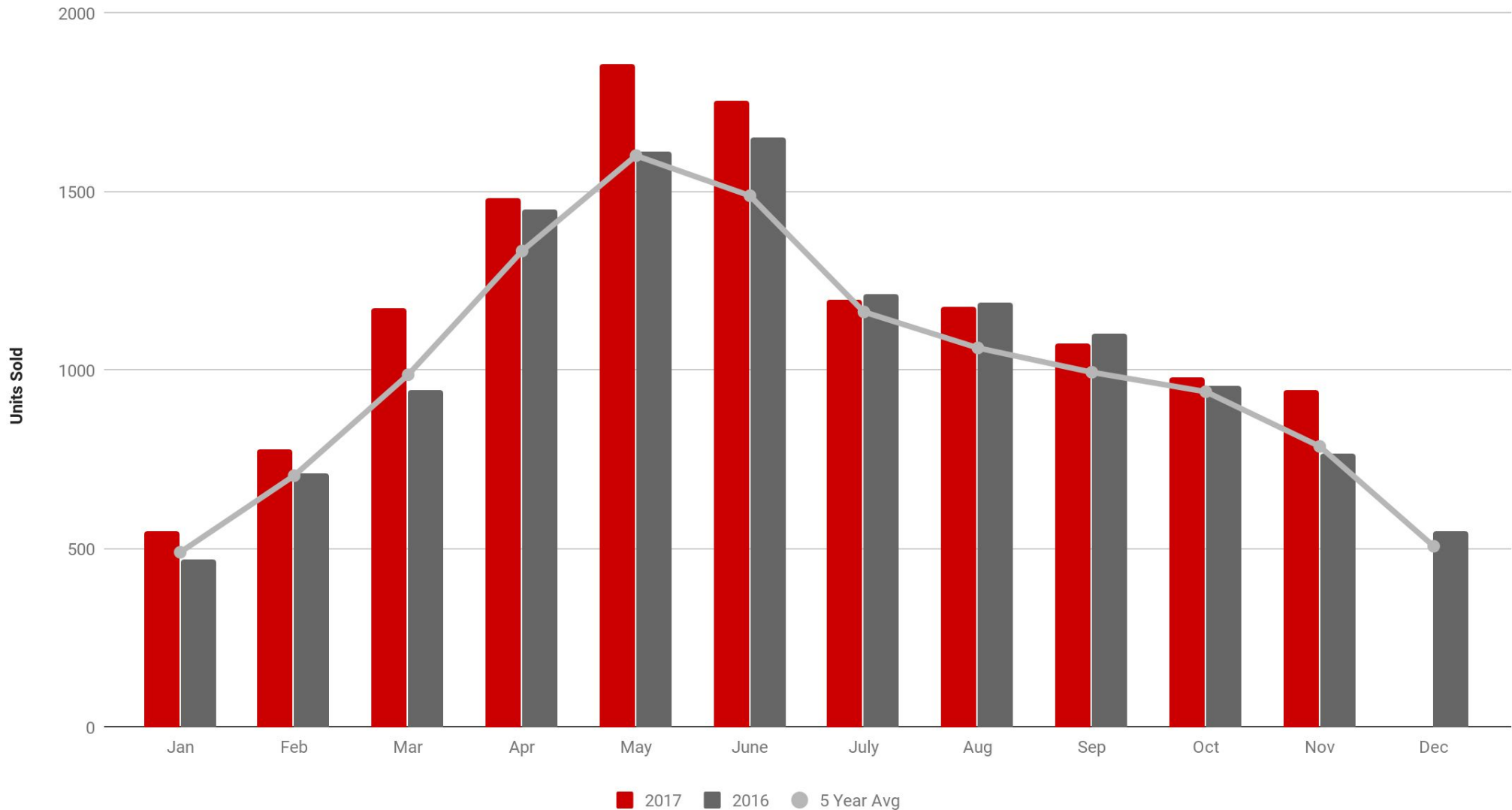


Ottawa Residential Unit Sales



The chart above compares the monthly residential MLS® unit sales for the current year to those of the previous year. The light grey line shows the residential sales trend by plotting the average unit sales over a five year period.

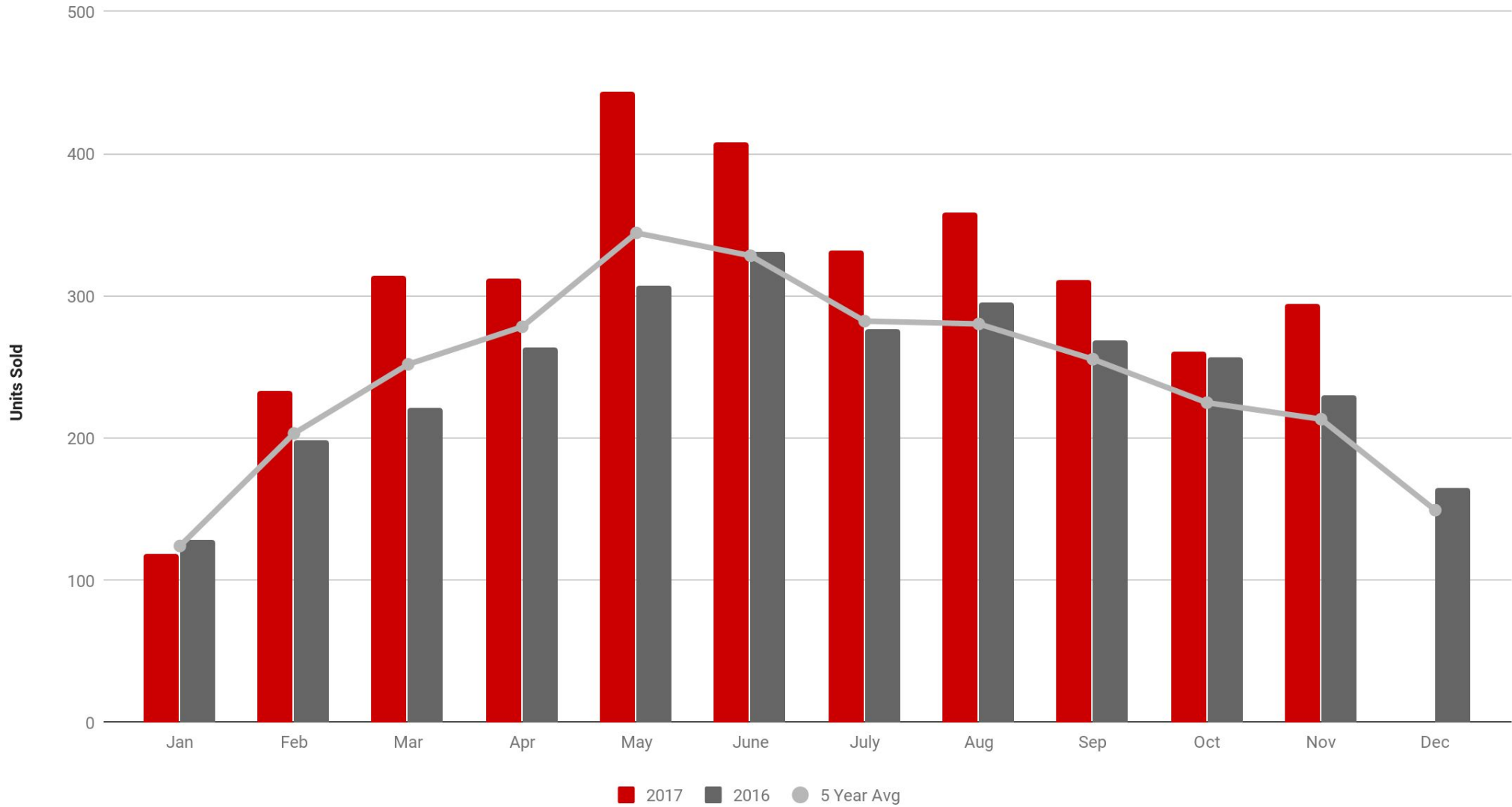


Source: OREB

Prepared by: Kaela Mieztis

Brokerage, Independently Owned & Operated

Ottawa Condominium Unit Sales



The chart above compares the monthly condominium MLS® unit sales for the current year to those of the previous year. The light grey line shows the condominium sales trend by plotting the average unit sales over a five year period.

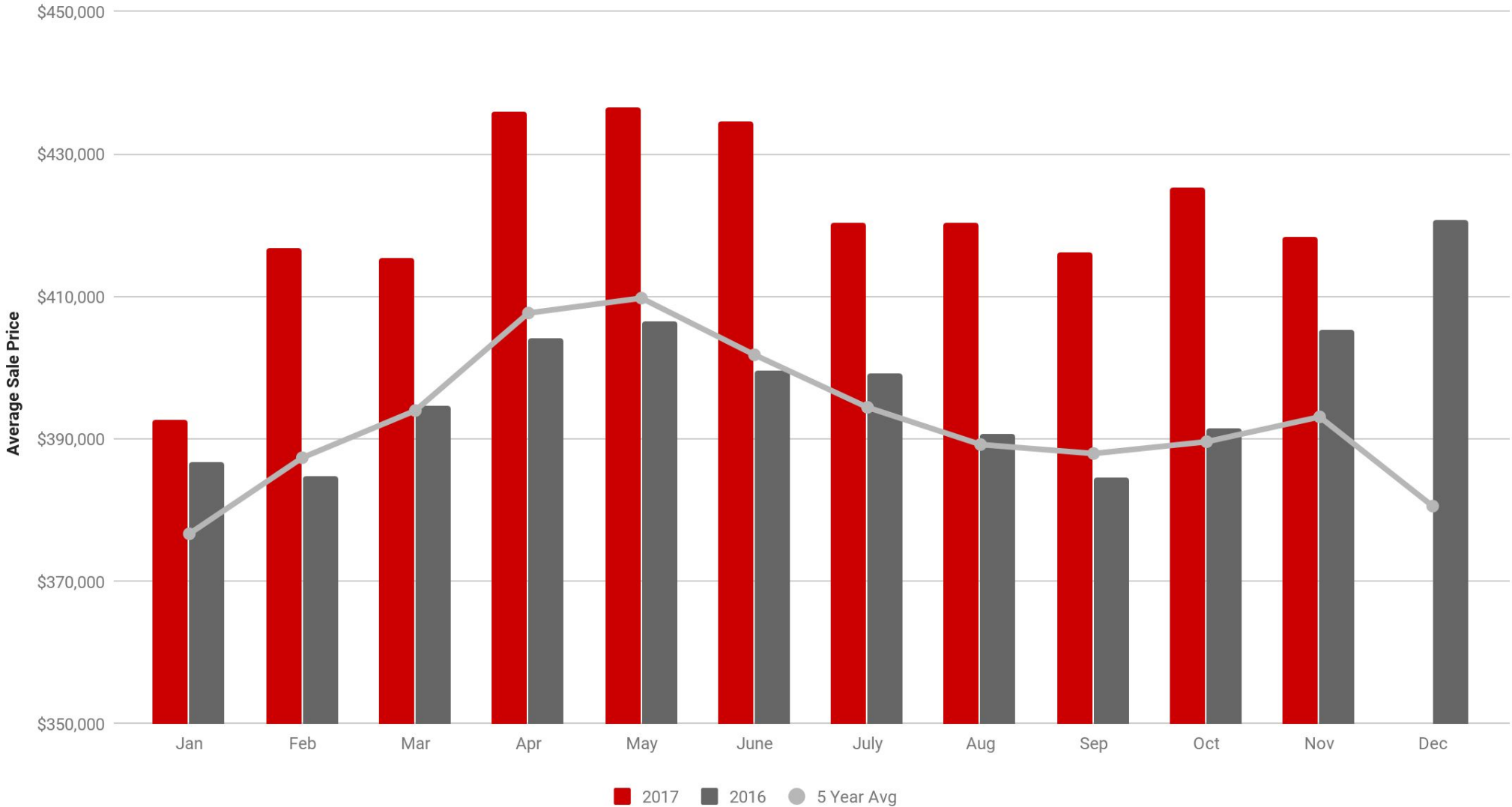


Source: OREB

Prepared by: Kaela Mieztis

Brokerage, Independently Owned & Operated

Ottawa Residential Sale Price



The chart above compares the monthly residential MLS® sale price for the current year to those of the previous year. The light grey line shows the residential sale price trend by plotting the average sale price over a five year period.

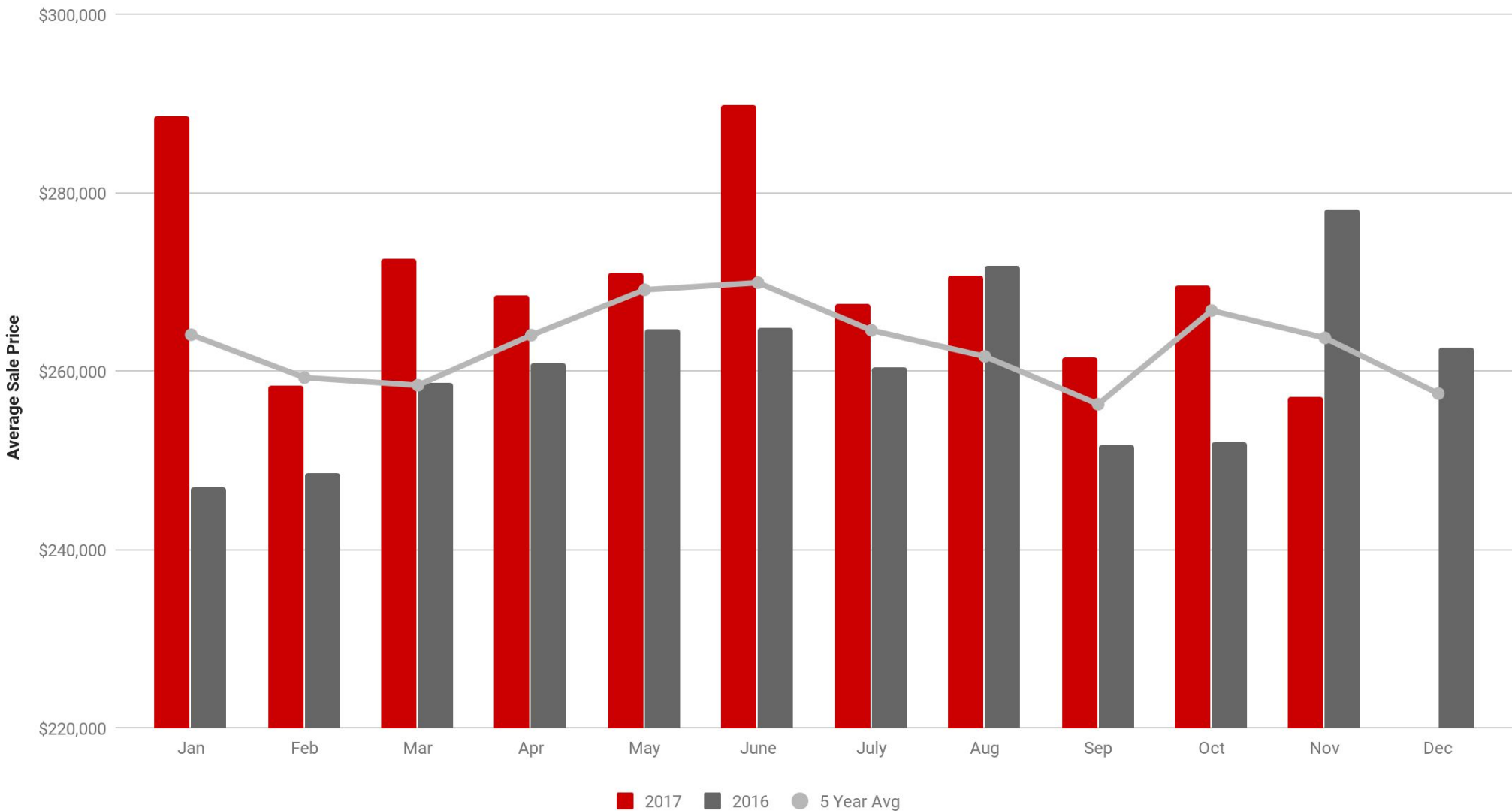
Source: OREB

Prepared by: Kaela Mieztis



Brokerage, Independently Owned & Operated

Ottawa Condominium Sale Price



The chart above compares the monthly condominium MLS® sale price for the current year to those of the previous year. The light grey line shows the condominium sale price trend by plotting the average sale price over a five year period.

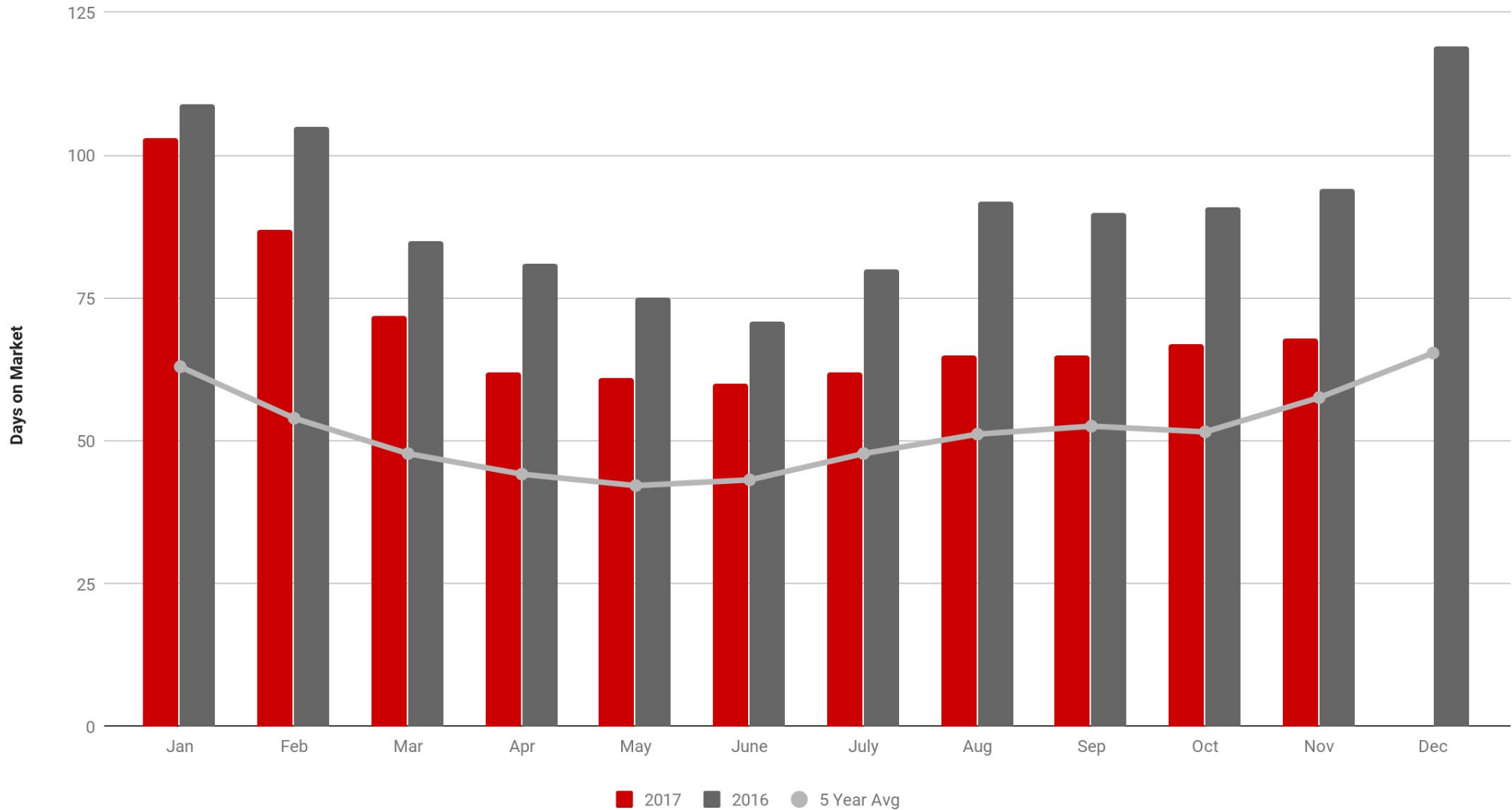
Source: OREB

Prepared by: Kaela Mieztis



Brokerage, Independently Owned & Operated

Ottawa Residential Selling Time



This chart compares the monthly MLS® residential cumulative days on market for the current year to those of the previous year. The light grey line plots the five year average residential days on market trend. CDOM reflects all listing information for a specific property; while DOM reflects for the current listing only.

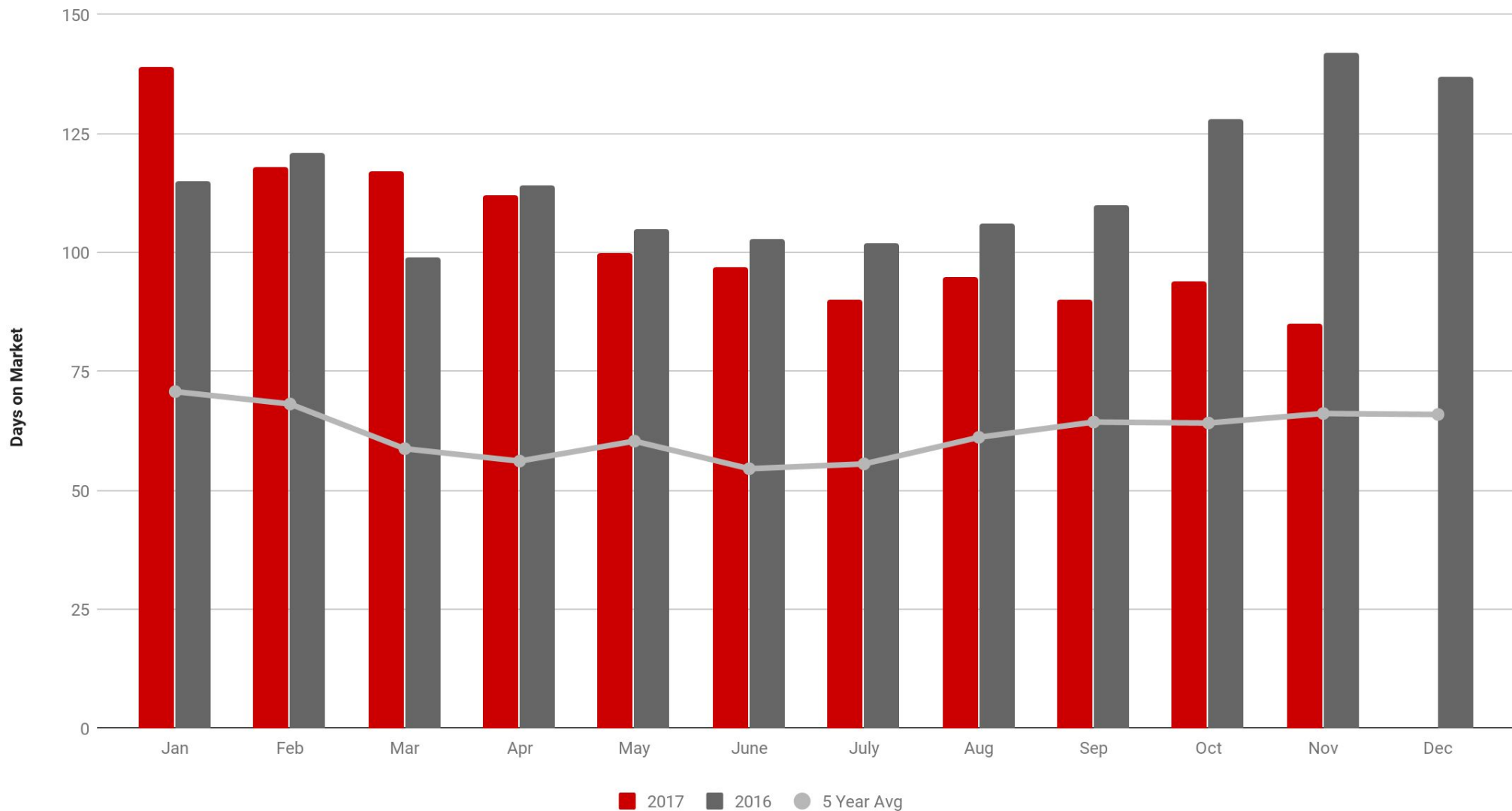


Source: OREB

Prepared by: Kaela Miezitis

Brokerage, Independently Owned & Operated

Ottawa Condominium Selling Time



This chart compares the monthly MLS® condominium cumulative days on market for the current year to those of the previous year. The light grey line plots the five year average condominium days on market trend. CDOM reflects all listing information for a specific property; while DOM reflects for the current listing only.

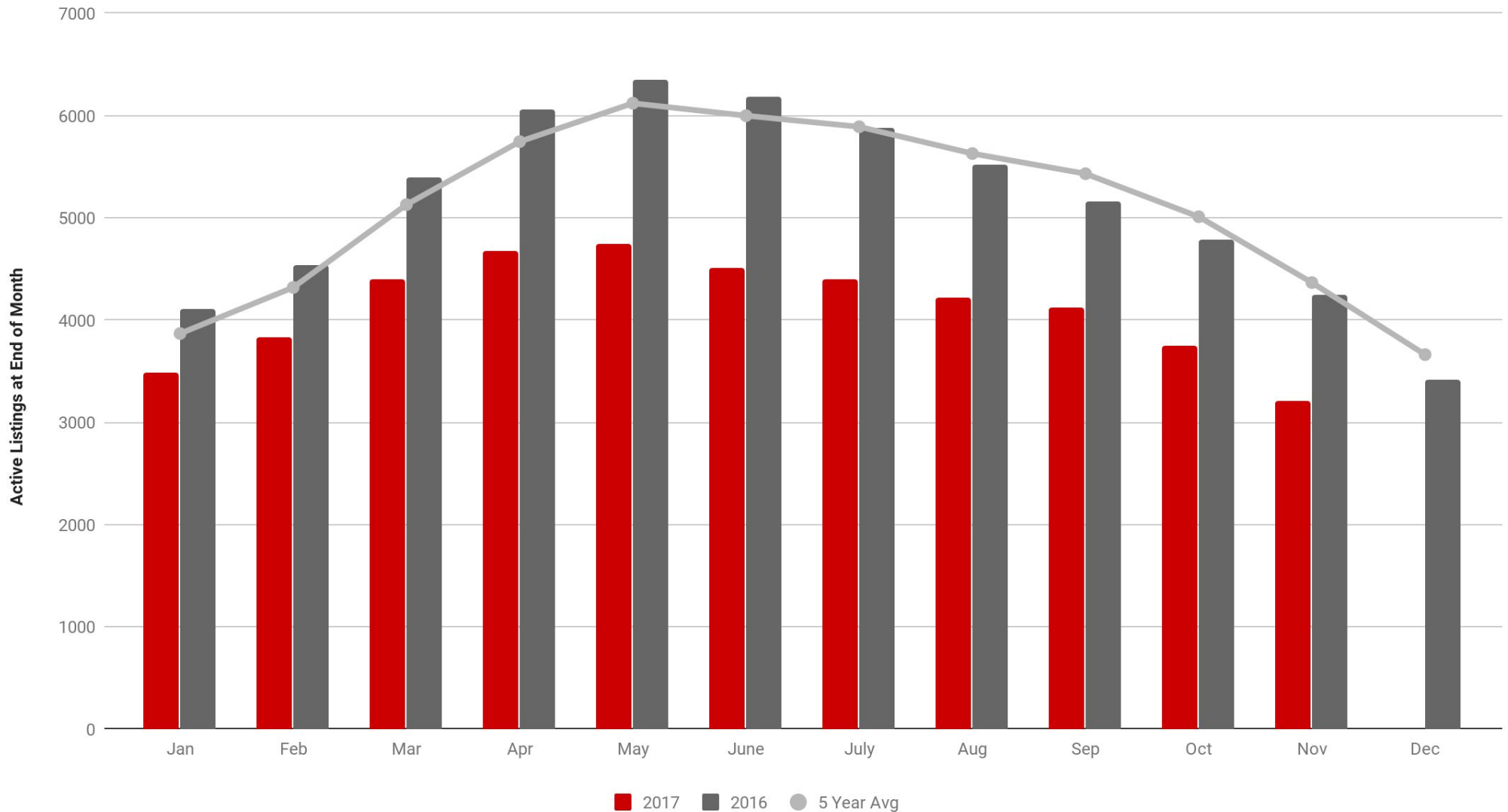


Source: OREB

Prepared by: Kaela Miezitis

Brokerage, Independently Owned & Operated

Ottawa Residential Listing Inventory



The chart above compares the residential MLS® listing inventory at the end the month for the current year to those of the previous year. The light grey line shows the residential inventory trend by plotting the average listing inventory at the end of the month over a five year period.

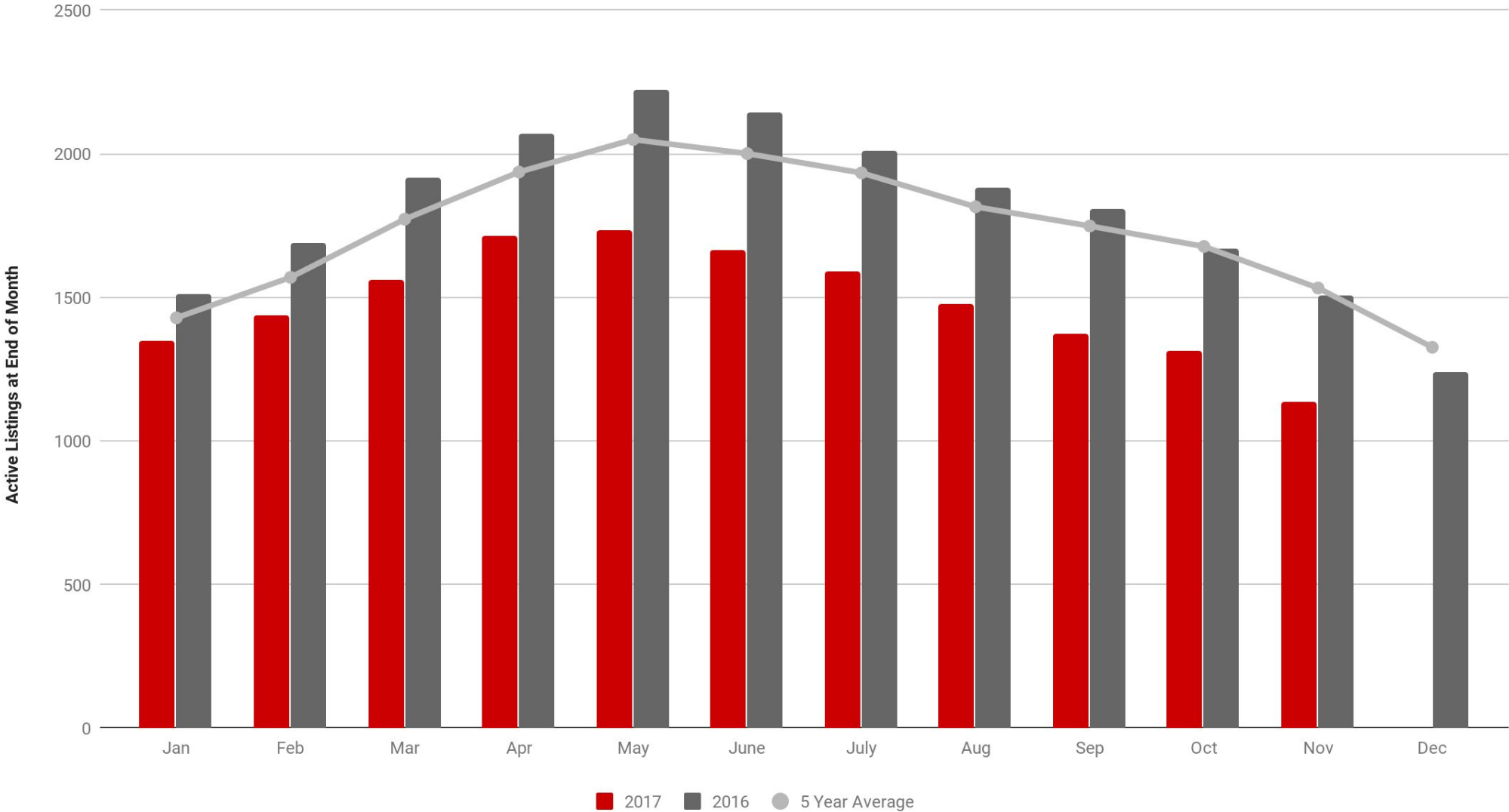


Source: OREB

Prepared by: Kaela Mieztis

Brokerage, Independently Owned & Operated

Ottawa Condominium Listing Inventory



The chart above compares the condominium MLS® listing inventory at the end the month for the current year to those of the previous year. The light grey line shows the condominium inventory trend by plotting the average listing inventory at the end of the month over a five year period.

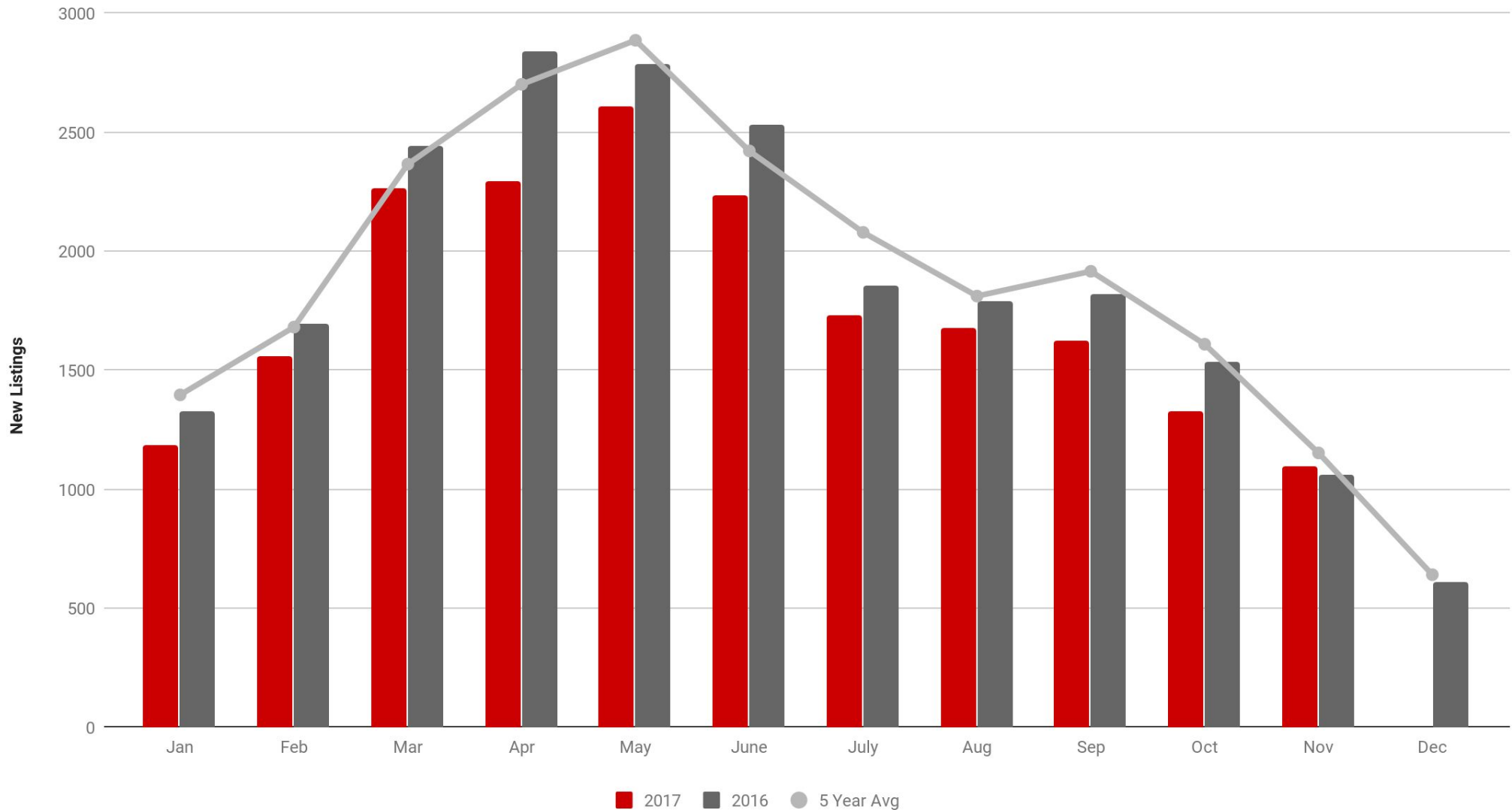
Source: OREB

Prepared by: Kaela Mieзитis



Brokerage, Independently Owned & Operated

Ottawa Residential Listings Taken



The chart above compares the monthly residential MLS® listings taken for the current year to those of the previous year. The light grey line shows the residential listings trend by plotting the average listings taken over a five year period.

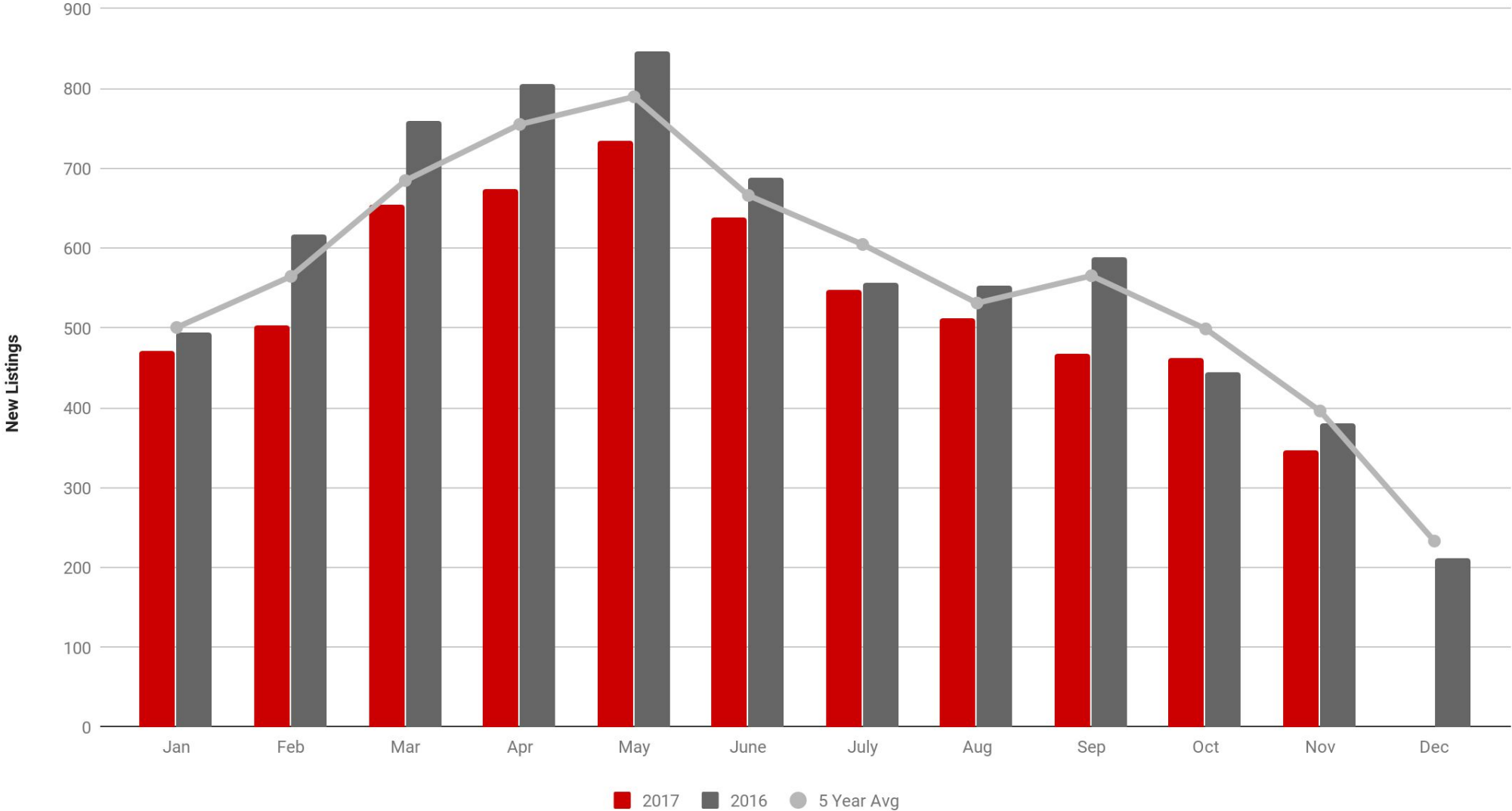
Source: OREB

Prepared by: Kaela Mieztis



Brokerage, Independently Owned & Operated

Ottawa Condominium Listings Taken



The chart above compares the monthly condominium MLS® listings taken for the current year to those of the previous year. The light grey line shows the condominium listings trend by plotting the average listings taken over a five year period.

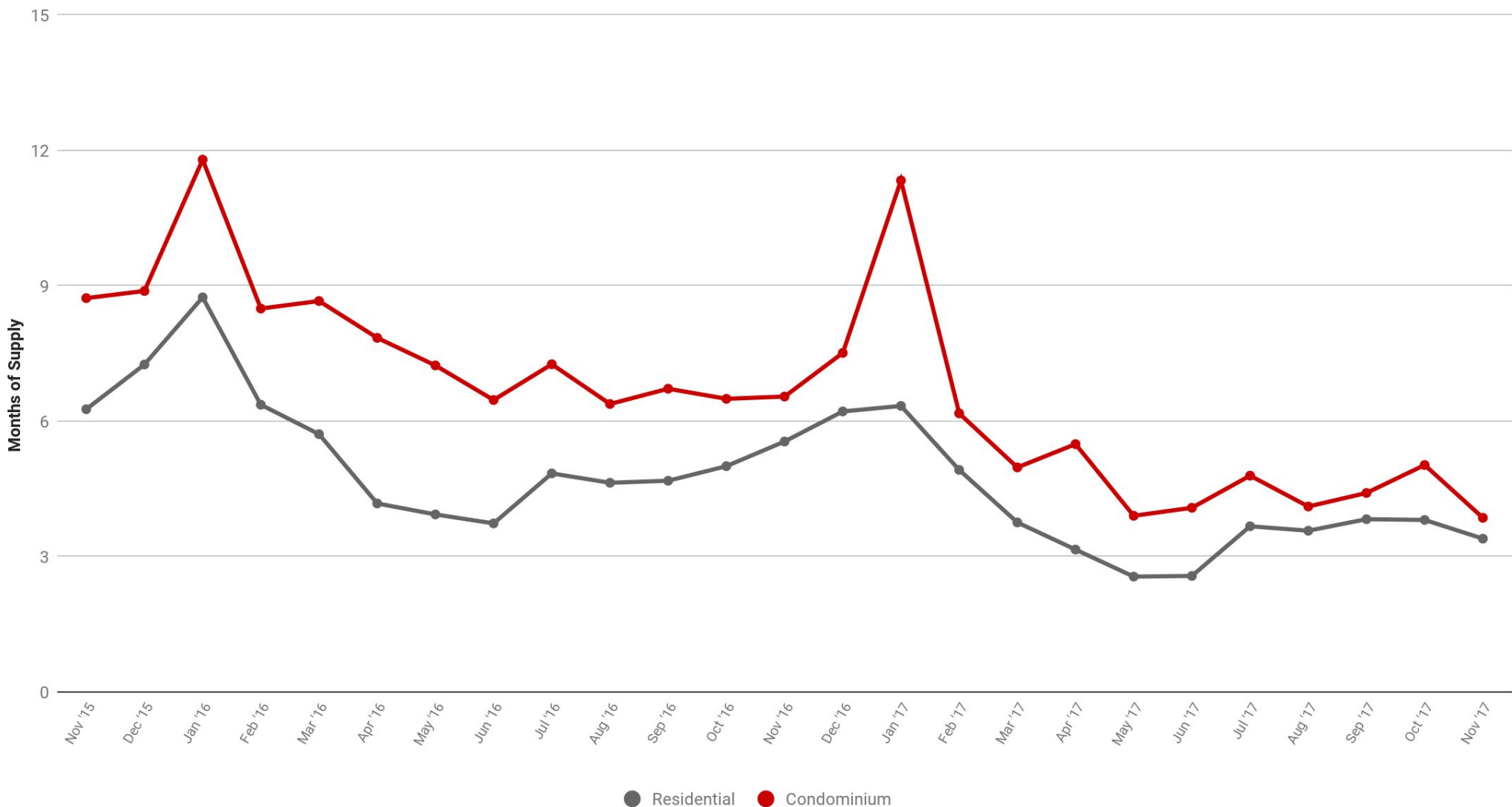
Source: OREB

Prepared by: Kaela Mieztis



Brokerage, Independently Owned & Operated

Ottawa Inventory Absorption Rate



The chart above compares the monthly residential and condominium MLS® inventory absorption rate over the past two years. The grey line plots the residential rate while the red line plots the condominium rate. The inventory absorption rate represents the number of months required to sell the remaining listing inventory given the current sales trend.

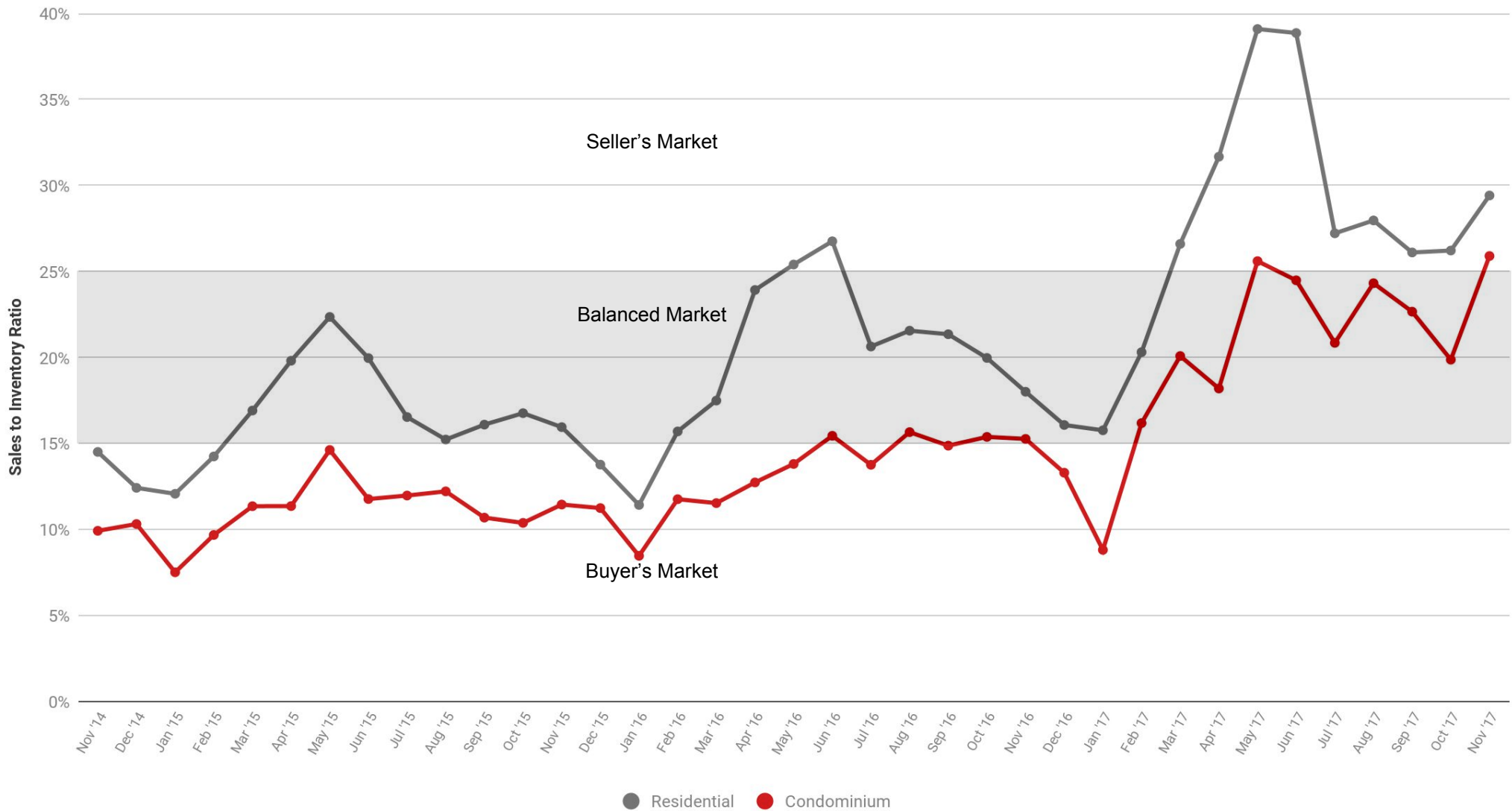
Source: OREB

Prepared by: Kaela Mieztis



Brokerage, Independently Owned & Operated

Ottawa Sales to Inventory Ratio



The chart above compares the monthly residential and condominium MLS® sales to inventory ratio over the past three years. The grey line plots the residential ratio while the red line plots the condominium ratio. This ratio is used as a representation of the market balance: a ratio between 15% and 25% indicates a balanced market; a ratio of above 25% indicates a market which favours the seller; and a ratio of under 15% indicates a market which favours the buyer.

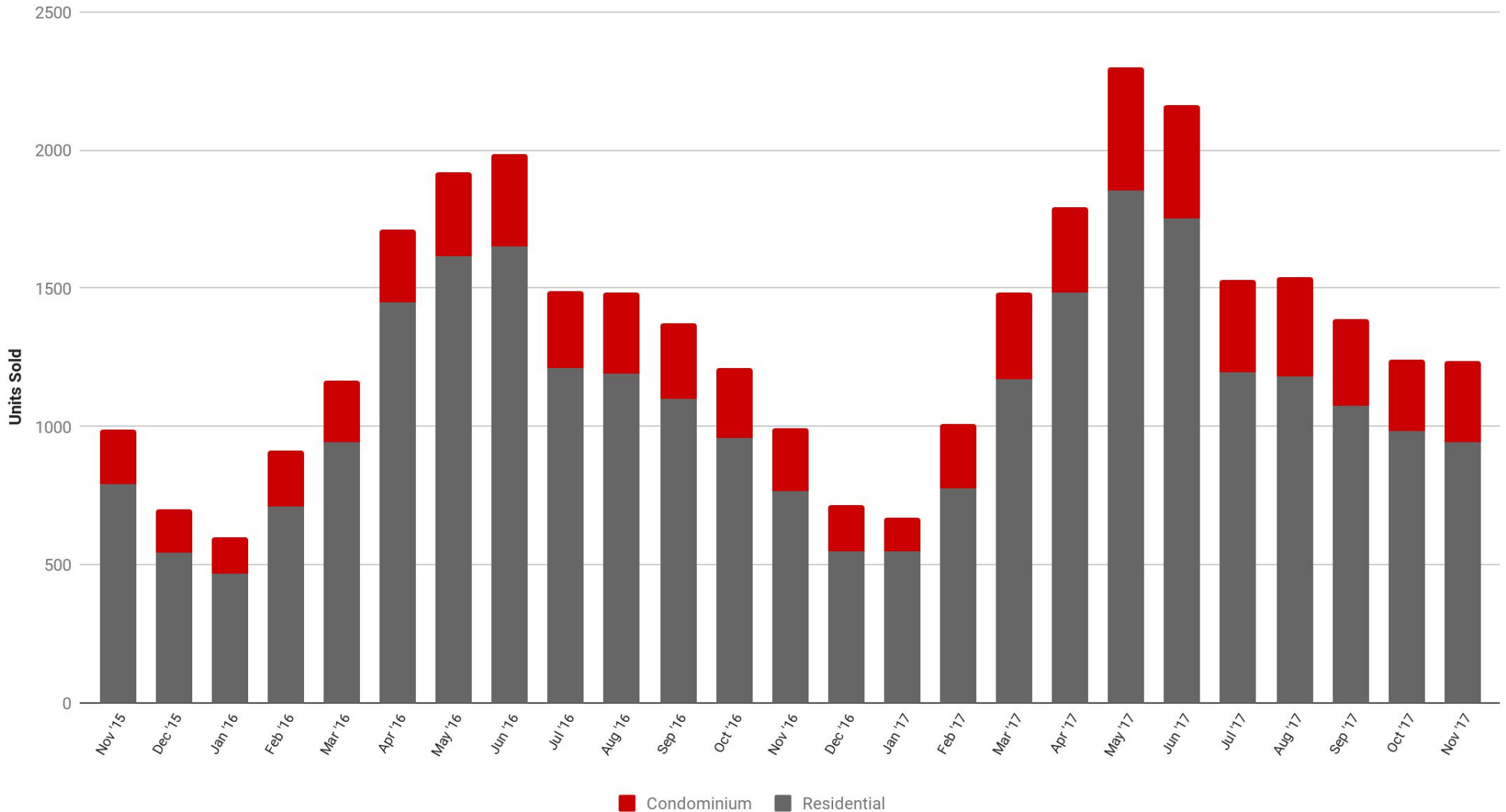


Source: OREB

Prepared by: Kaela Miezitis

Brokerage, Independently Owned & Operated

Ottawa Unit Sales



The chart above compares the monthly residential and condominium MLS® unit sales over the past two years. The grey bars show the residential unit sales while the red bars show the condominium unit sales.

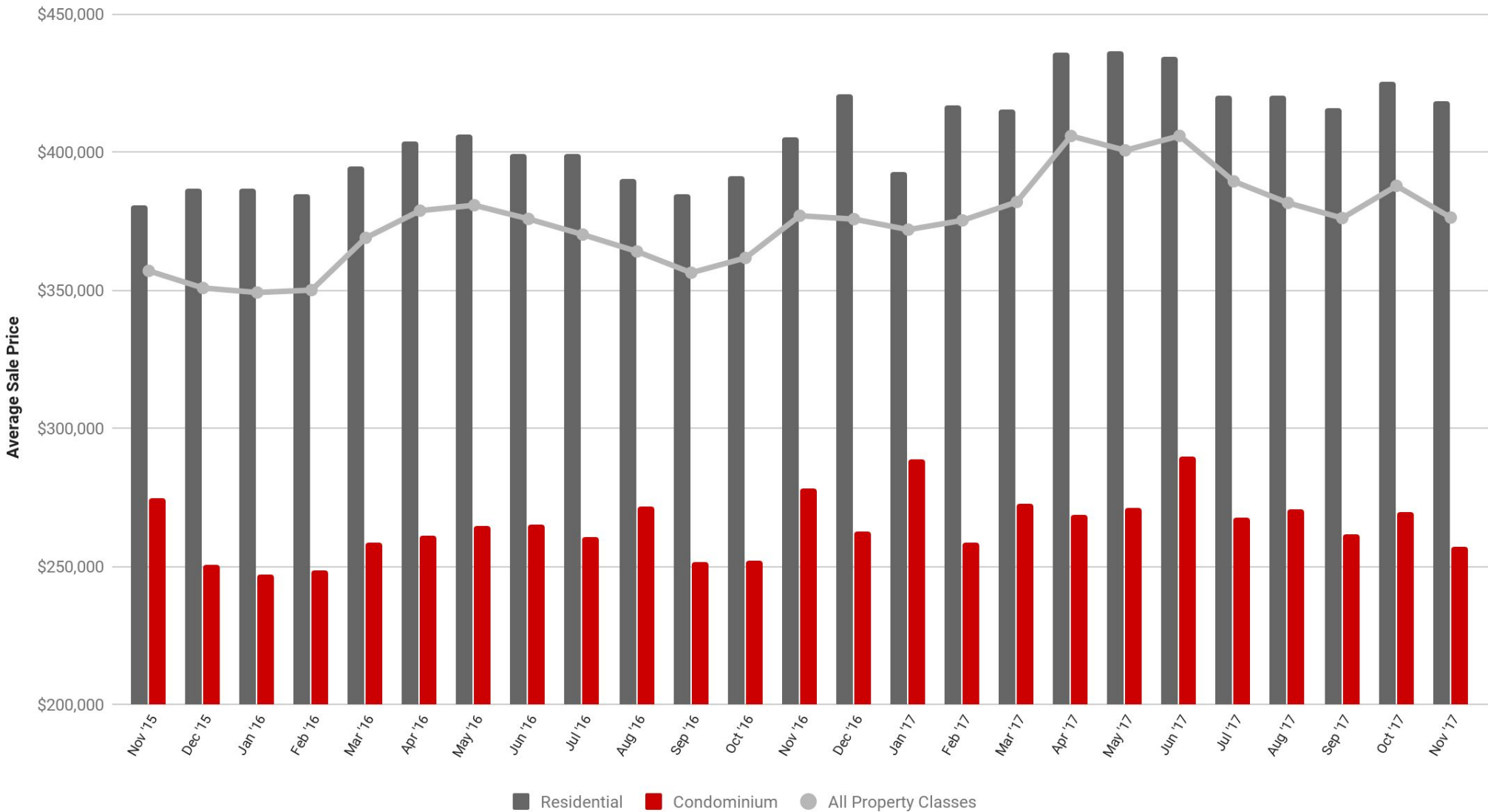


Source: OREB

Prepared by: Kaela Mieзитis

Brokerage, Independently Owned & Operated

Ottawa Average Sale Price



The chart above compares the monthly residential and condominium MLS® sale price over the past two years. The grey bars show the residential sale price while the red bars show the condominium sale price. The light grey line plots the average sale price for all property classes.

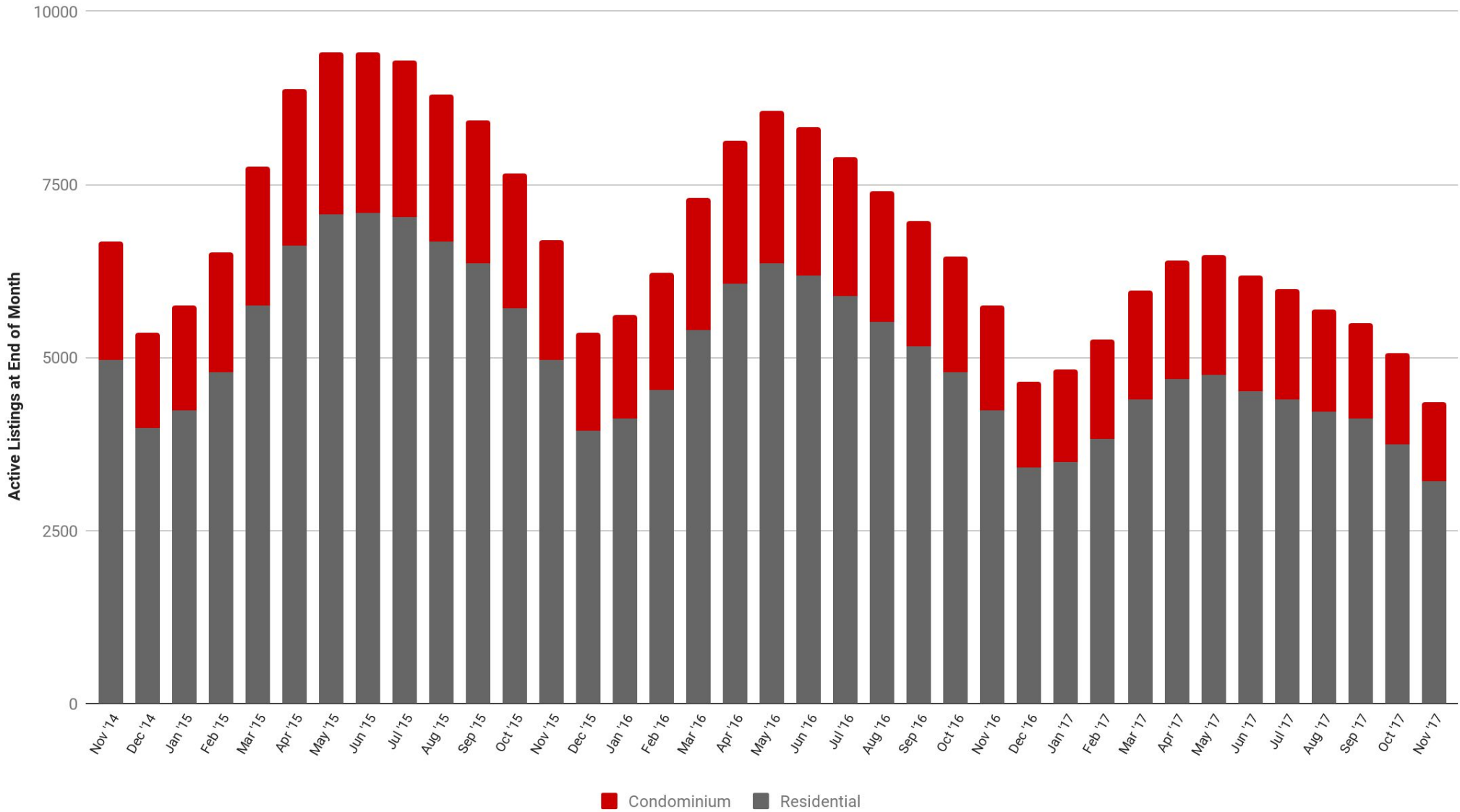


Source: OREB

Prepared by: Kaela Miezitis

Brokerage, Independently Owned & Operated

Ottawa Listing Inventory



The chart above compares the monthly residential and condominium MLS® listing inventory over the past three years. The grey bars show the residential listing inventory while the red bars show the condominium listing inventory.

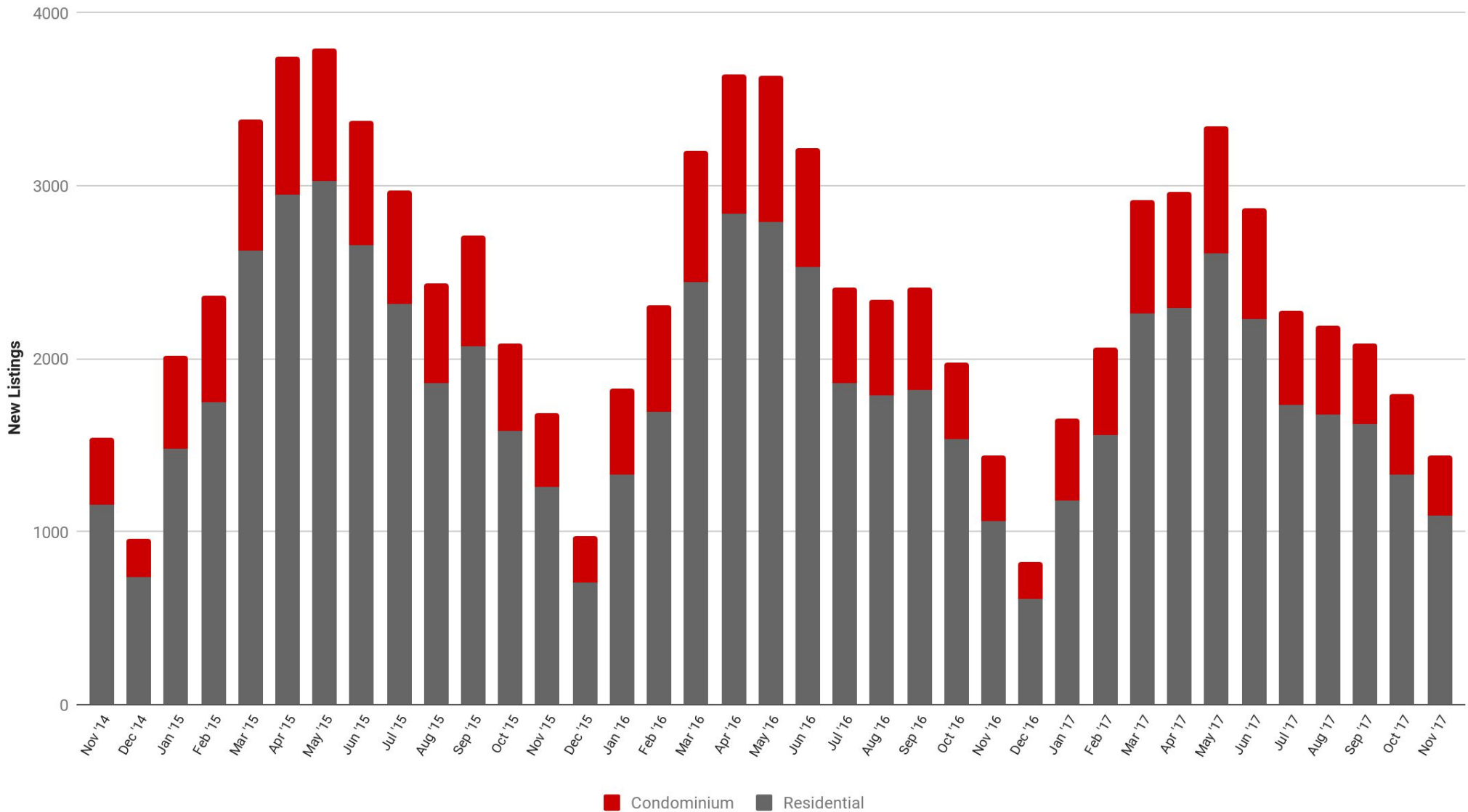


Source: OREB

Prepared by: Kaela Mieztis

Brokerage, Independently Owned & Operated

Ottawa Listings Taken



The chart above compares the monthly residential and condominium MLS® listings taken over the past three years. The grey bars show the residential listings taken while the red bars show the condominium listings taken.



Source: OREB

Prepared by: Kaela Mieztis

Brokerage, Independently Owned & Operated