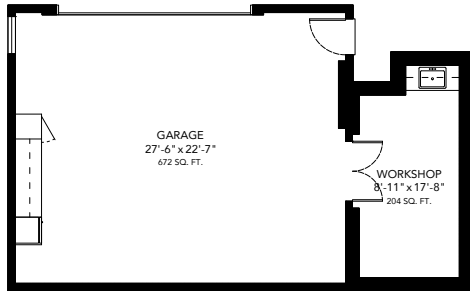


3633 Selkirk Street, Vancouver, BC



GARAGE PLAN



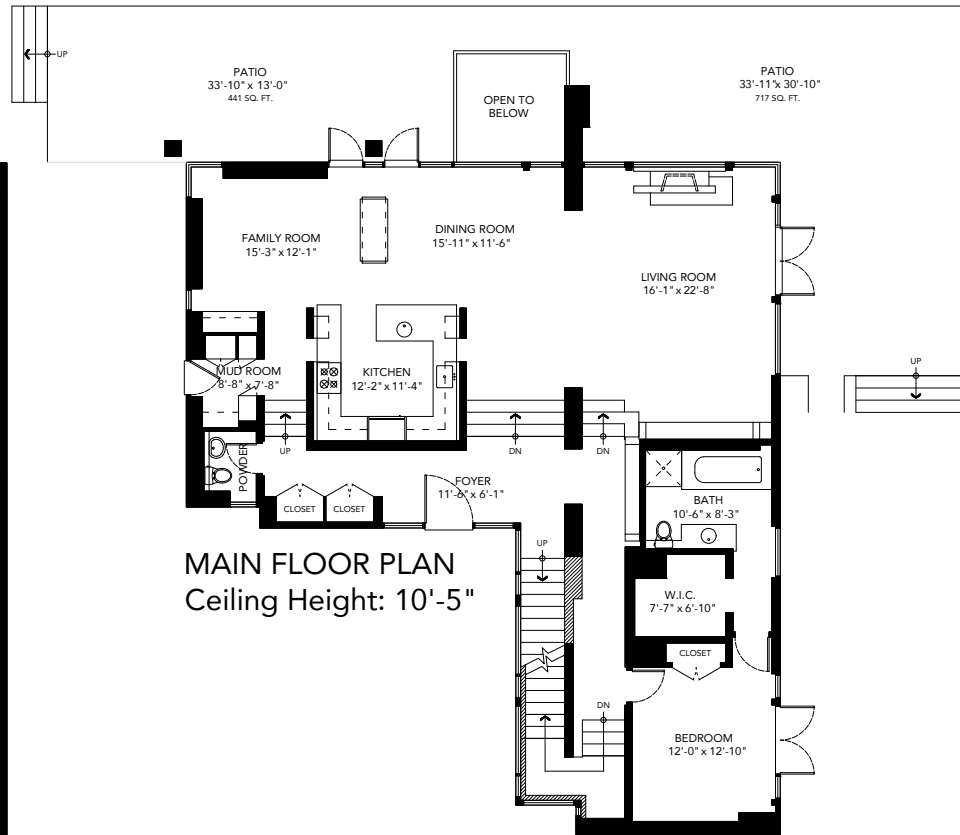
COACH HOUSE PLAN
 Ceiling Height: 9'-5"

Balcony: 224 SQ. FT.
 Living Rm Patio: 717 SQ. FT.
 Family Rm Patio: 441 SQ. FT.
 Lower Patio: 89 SQ. FT.
 Garage: 672 SQ. FT.
 Work Shop: 204 SQ. FT.

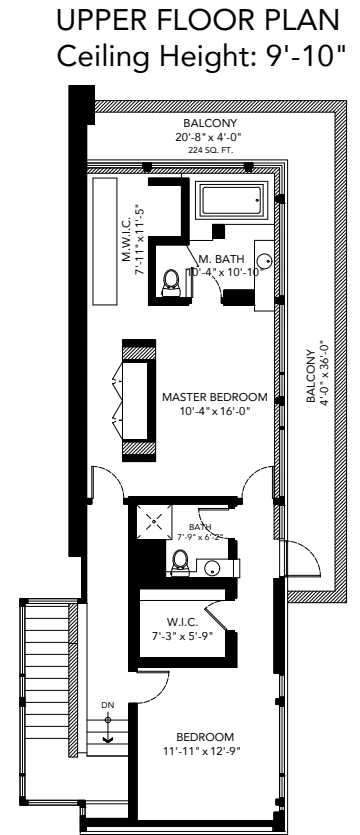
Upper Floor: 1088 SQ. FT.
 Main Floor: 2049 SQ. FT.
 Lower Floor: 2049 SQ. FT.
House Total: 5186 SQ. FT.
Coach House: 485 SQ. FT.



LOWER FLOOR PLAN
 Ceiling Height: 8'-7"



MAIN FLOOR PLAN
 Ceiling Height: 10'-5"



UPPER FLOOR PLAN
 Ceiling Height: 9'-10"

Ian Watt PREC*
 604-999-9426
 ianwatt@ianwatt.ca
 ianwatt.ca

FLOOR PLAN CREATED BY:
 SCANN3D.CA
 JUNE 8, 2020



*PERSONAL REAL ESTATE CORPORATION. MEASUREMENTS ARE APPROXIMATE AND MAY NOT BE TO SCALE.
 THE FLOOR PLAN ILLUSTRATION IS NOT SUITABLE FOR CONSTRUCTION/ARCHITECTURAL PURPOSES. E&O INSURED.