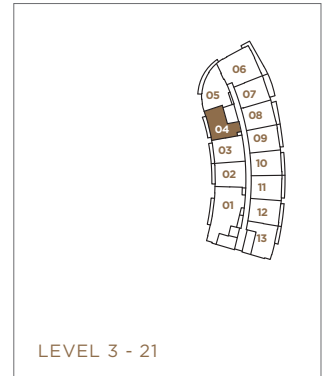




1 Al Fresco Deck Doors



1 BEDROOM

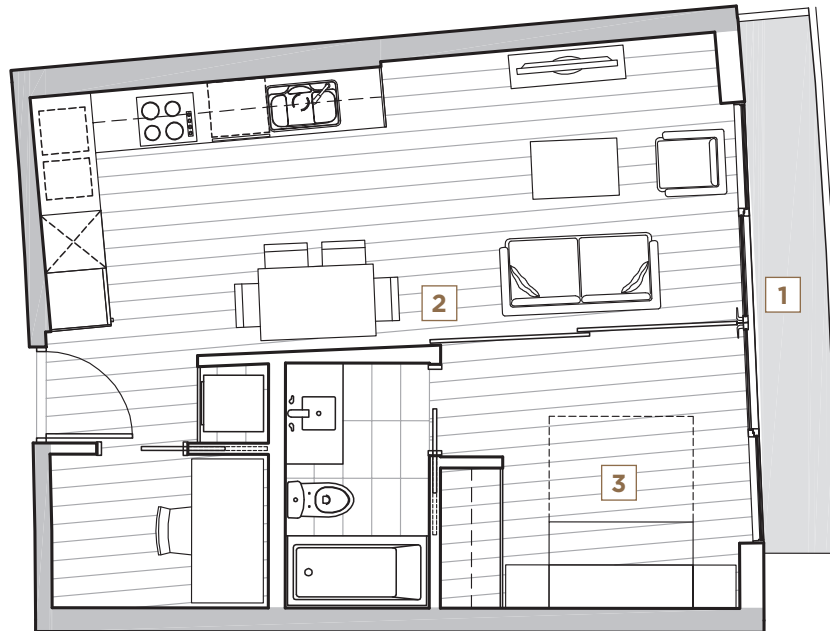
UNIT 04

ENCLOSED AREA: 496 SF | OUTDOOR SPACE: 47 SF - 111 SF | TOTAL AREA: 543 SF - 607 SF

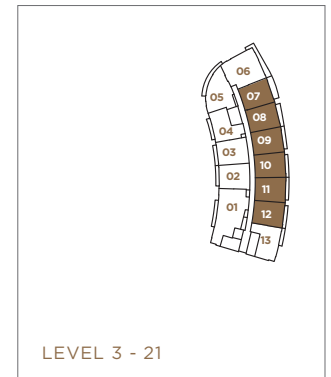
UNIT 204

ENCLOSED AREA: 496 SF | OUTDOOR SPACE: 447 SF | TOTAL AREA: 943 SF





- 1** Al Fresco Deck Doors
- 2** Flex Wall
- 3** Convertible Bed

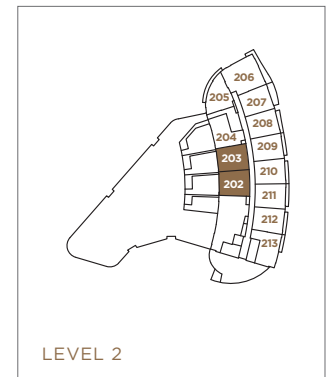
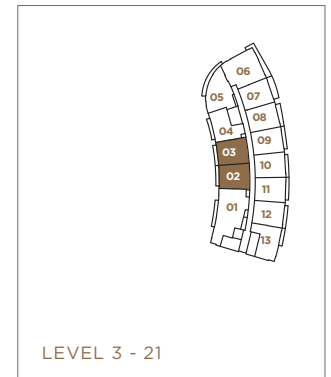


B 1 BEDROOM & DEN
 ENCLOSED AREA: 500 SF | OUTDOOR SPACE: 51 SF - 132 SF | TOTAL AREA: 551 SF - 632 SF

THE DEVELOPER RESERVES THE RIGHT TO MAKE MODIFICATIONS AND CHANGES TO FEATURES AND FINISHES, BRANDS, MATERIALS, BUILDING AND LANDSCAPE DESIGN, SPECIFICATIONS, CEILING HEIGHTS, NUMBER OF FLOORS, NUMBER OF UNITS, FLOORING PATTERNS AND FLOOR PLANS WITHOUT NOTIFICATION. APPROXIMATE SUITE SIZES ARE COMPUTED FROM THE OUTSIDE FACE OF EXTERIOR WALLS, THE OUTSIDE FACE OF CORRIDOR AND COMMON WALLS, AND THE CENTERLINE OF WALLS ADJACENT TO OTHER STRATA LOTS. APPROXIMATE MEASUREMENTS FOR EXTERIOR BALCONIES AND TERRACES ARE COMPUTED FROM THE OUTSIDE FACE OF EXTERIOR WALLS TO THE SLAB EDGES OF THE OUTSIDE FACE OF PARAPETS. BALCONY CONFIGURATION AND SIZE MAY VARY FLOOR TO FLOOR. ANY FLOORING PATTERN SHOWN ON THE PLAN DOES NOT INDICATE THE ACTUAL WOOD OR LAMINATE, TILE OR PAVER, SHAPE, SIZE OR DIRECTION INSTALLED. THE SAME SUITE TYPE MAY VARY FROM FLOOR TO FLOOR AND/OR BE SLIGHTLY ALTERED DEPENDING ON FLOOR PLATE ORIENTATION. WINDOW AND MULLION CONFIGURATIONS MAY VARY BY FLOOR. WINDOW SYSTEMS MAY INCLUDE PANELS, WALLS OR OTHER ARCHITECTURAL FEATURES THAT MAY BLOCK VIEWS AND REDUCE WINDOW GLAZING. TERRACE AREAS MAY INCLUDE PLANTERS. ALL MATTERS WILL BE GOVERNED ENTIRELY BY THE TERMS OF THE APPLICABLE DISCLOSURE STATEMENT AND PURCHASER CONTRACT IN EACH CASE. THIS IS NOT AN OFFERING FOR SALE. ANY SUCH OFFERING MAY ONLY BE MADE WITH THE APPLICABLE DISCLOSURE STATEMENT AND AGREEMENT OF PURCHASE AND SALE. CONCORD ARC LIMITED PARTNERSHIP E&OE.



- 1** AI Fresco Deck Doors
- 2** Flex Wall
- 3** Convertible Bed



1 BEDROOM & DEN

UNIT 02 & 03

ENCLOSED AREA: 513 SF | OUTDOOR SPACE: 43 SF - 123 SF | TOTAL AREA: 556 SF - 636 SF

UNIT 202 & 203

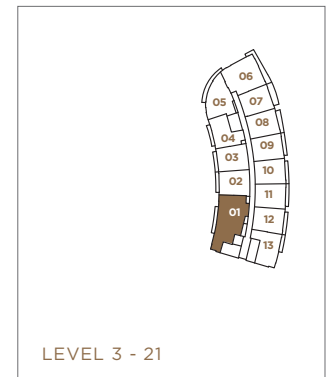
ENCLOSED AREA: 513 SF | OUTDOOR SPACE: 388 SF | TOTAL AREA: 901 SF



THE DEVELOPER RESERVES THE RIGHT TO MAKE MODIFICATIONS AND CHANGES TO FEATURES AND FINISHES, BRANDS, MATERIALS, BUILDING AND LANDSCAPE DESIGN, SPECIFICATIONS, CEILING HEIGHTS, NUMBER OF FLOORS, NUMBER OF UNITS, FLOORING PATTERNS AND FLOOR PLANS WITHOUT NOTIFICATION. APPROXIMATE SUITE SIZES ARE COMPUTED FROM THE OUTSIDE FACE OF EXTERIOR WALLS, THE OUTSIDE FACE OF CORRIDOR AND COMMON WALLS, AND THE CENTERLINE OF WALLS ADJACENT TO OTHER STRATA LOTS. APPROXIMATE MEASUREMENTS FOR EXTERIOR BALCONIES AND TERRACES ARE COMPUTED FROM THE OUTSIDE FACE OF EXTERIOR WALLS TO THE SLAB EDGES OF THE OUTSIDE FACE OF PARAPETS. BALCONY CONFIGURATION AND SIZE MAY VARY FLOOR TO FLOOR. ANY FLOORING PATTERN SHOWN ON THE PLAN DOES NOT INDICATE THE ACTUAL WOOD OR LAMINATE, TILE OR PAVER, SHAPE, SIZE OR DIRECTION INSTALLED. THE SAME SUITE TYPE MAY VARY FROM FLOOR TO FLOOR AND/OR BE SLIGHTLY ALTERED DEPENDING ON FLOOR PLATE ORIENTATION. WINDOW AND MULLION CONFIGURATIONS MAY VARY BY FLOOR. WINDOW SYSTEMS MAY INCLUDE PANELS, WALLS OR OTHER ARCHITECTURAL FEATURES THAT MAY BLOCK VIEWS AND REDUCE WINDOW GLAZING. TERRACE AREAS MAY INCLUDE PLANTERS. ALL MATTERS WILL BE GOVERNED ENTIRELY BY THE TERMS OF THE APPLICABLE DISCLOSURE STATEMENT AND PURCHASER CONTRACT IN EACH CASE. THIS IS NOT AN OFFERING FOR SALE. ANY SUCH OFFERING MAY ONLY BE MADE WITH THE APPLICABLE DISCLOSURE STATEMENT AND AGREEMENT OF PURCHASE AND SALE. CONCORD ARC LIMITED PARTNERSHIP E&OE.



- 1** AI Fresco Deck Doors
- 2** Flex Wall
- 3** Convertible Bed



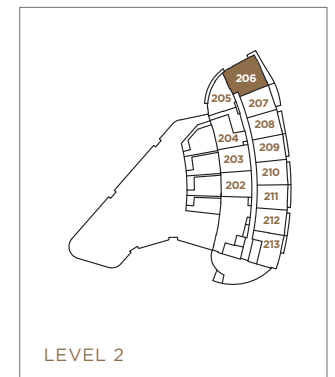
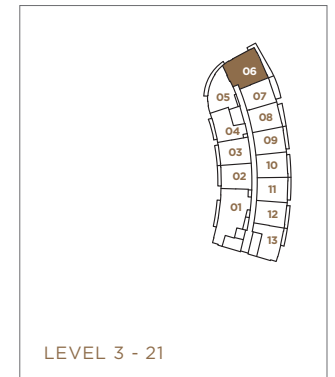
N2 2 BEDROOM & DEN

ENCLOSED AREA: 925 SF | OUTDOOR SPACE: 58 SF - 164 SF | TOTAL AREA: 983 SF - 1,089 SF

THE DEVELOPER RESERVES THE RIGHT TO MAKE MODIFICATIONS AND CHANGES TO FEATURES AND FINISHES, BRANDS, MATERIALS, BUILDING AND LANDSCAPE DESIGN, SPECIFICATIONS, CEILING HEIGHTS, NUMBER OF FLOORS, NUMBER OF UNITS, FLOORING PATTERNS AND FLOOR PLANS WITHOUT NOTIFICATION. APPROXIMATE SUITE SIZES ARE COMPUTED FROM THE OUTSIDE FACE OF EXTERIOR WALLS, THE OUTSIDE FACE OF CORRIDOR AND COMMON WALLS, AND THE CENTERLINE OF WALLS ADJACENT TO OTHER STRATA LOTS. APPROXIMATE MEASUREMENTS FOR EXTERIOR BALCONIES AND TERRACES ARE COMPUTED FROM THE OUTSIDE FACE OF EXTERIOR WALLS TO THE SLAB EDGES OF THE OUTSIDE FACE OF PARAPETS. BALCONY CONFIGURATION AND SIZE MAY VARY FLOOR TO FLOOR. ANY FLOORING PATTERN SHOWN ON THE PLAN DOES NOT INDICATE THE ACTUAL WOOD OR LAMINATE, TILE OR PAVER, SHAPE, SIZE OR DIRECTION INSTALLED. THE SAME SUITE TYPE MAY VARY FROM FLOOR TO FLOOR AND/OR BE SLIGHTLY ALTERED DEPENDING ON FLOOR PLATE ORIENTATION. WINDOW AND MULLION CONFIGURATIONS MAY VARY BY FLOOR. WINDOW SYSTEMS MAY INCLUDE PANELS, WALLS OR OTHER ARCHITECTURAL FEATURES THAT MAY BLOCK VIEWS AND REDUCE WINDOW GLAZING. TERRACE AREAS MAY INCLUDE PLANTERS. ALL MATTERS WILL BE GOVERNED ENTIRELY BY THE TERMS OF THE APPLICABLE DISCLOSURE STATEMENT AND PURCHASER CONTRACT IN EACH CASE. THIS IS NOT AN OFFERING FOR SALE. ANY SUCH OFFERING MAY ONLY BE MADE WITH THE APPLICABLE DISCLOSURE STATEMENT AND AGREEMENT OF PURCHASE AND SALE. CONCORD ARC LIMITED PARTNERSHIP E&OE.



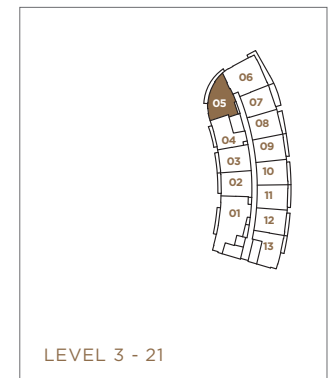
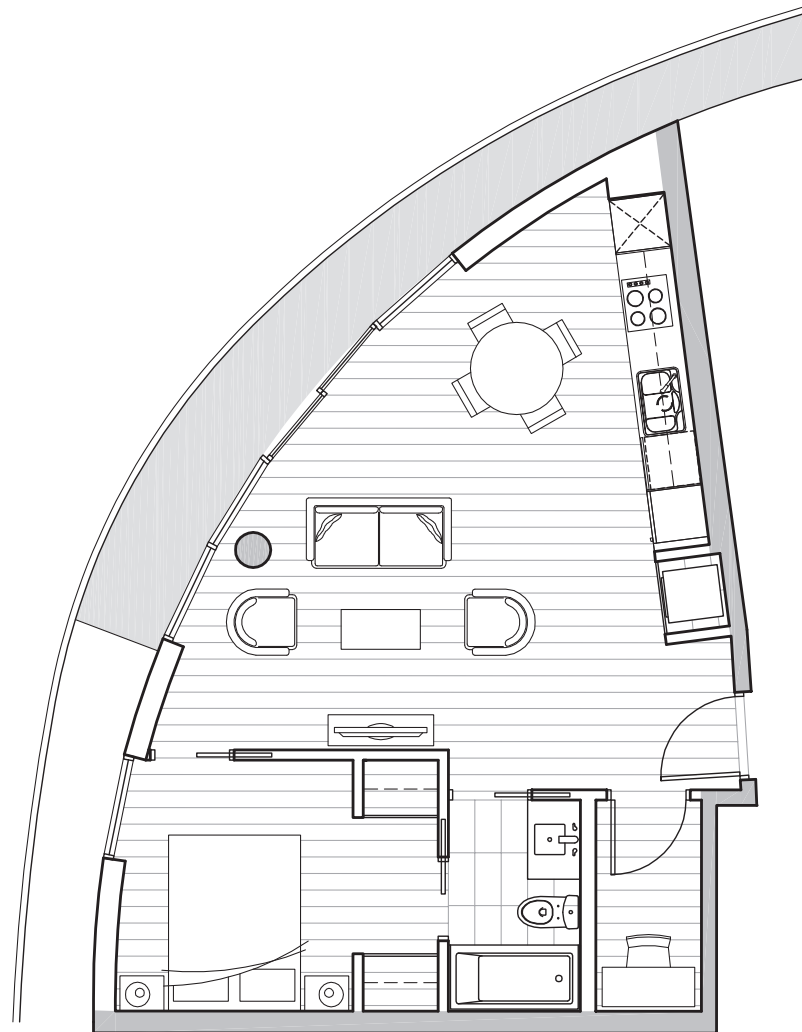
1 AI Fresco Deck Doors



2 BEDROOM & DEN

ENCLOSED AREA: 762 SF | OUTDOOR SPACE: 95 SF - 249 SF | TOTAL AREA: 857 SF - 1,011 SF

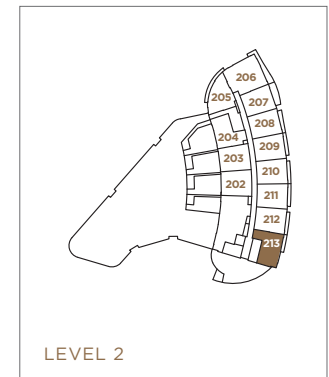
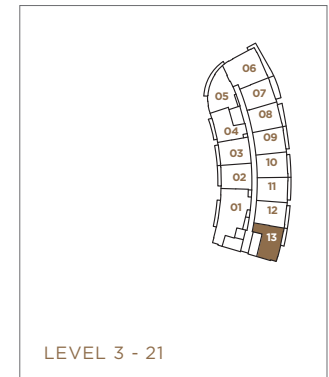
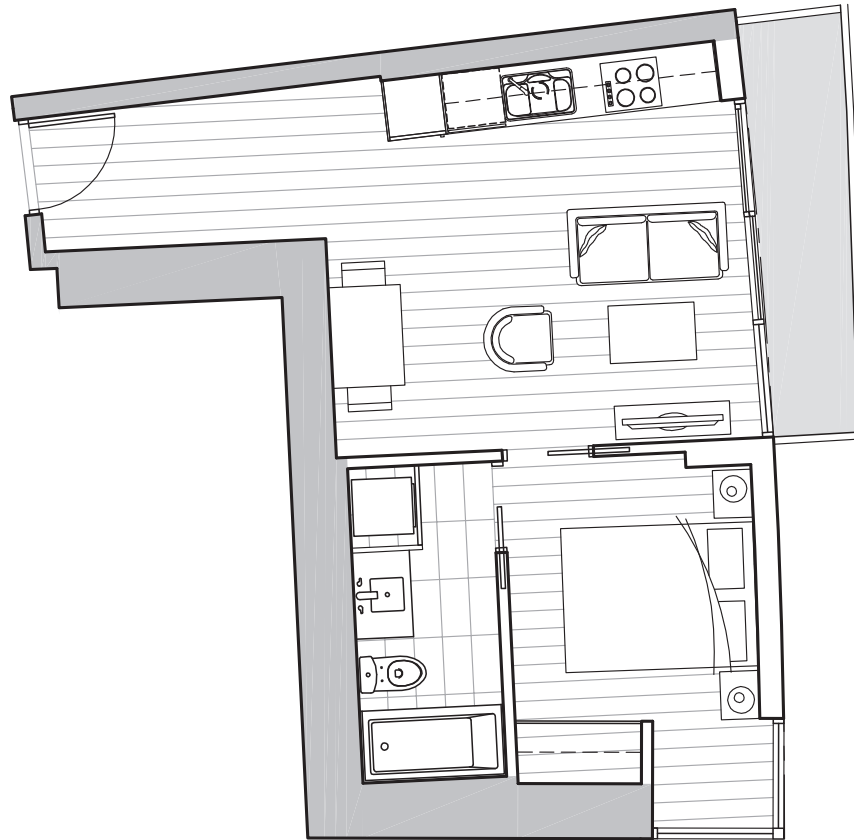
THE DEVELOPER RESERVES THE RIGHT TO MAKE MODIFICATIONS AND CHANGES TO FEATURES AND FINISHES, BRANDS, MATERIALS, BUILDING AND LANDSCAPE DESIGN, SPECIFICATIONS, CEILING HEIGHTS, NUMBER OF FLOORS, NUMBER OF UNITS, FLOORING PATTERNS AND FLOOR PLANS WITHOUT NOTIFICATION. APPROXIMATE SUITE SIZES ARE COMPUTED FROM THE OUTSIDE FACE OF EXTERIOR WALLS, THE OUTSIDE FACE OF CORRIDOR AND COMMON WALLS, AND THE CENTERLINE OF WALLS ADJACENT TO OTHER STRATA LOTS. APPROXIMATE MEASUREMENTS FOR EXTERIOR BALCONIES AND TERRACES ARE COMPUTED FROM THE OUTSIDE FACE OF EXTERIOR WALLS TO THE SLAB EDGES OF THE OUTSIDE FACE OF PARAPETS. BALCONY CONFIGURATION AND SIZE MAY VARY FLOOR TO FLOOR. ANY FLOORING PATTERN SHOWN ON THE PLAN DOES NOT INDICATE THE ACTUAL WOOD OR LAMINATE, TILE OR PAVER, SHAPE, SIZE OR DIRECTION INSTALLED. THE SAME SUITE TYPE MAY VARY FROM FLOOR TO FLOOR AND/OR BE SLIGHTLY ALTERED DEPENDING ON FLOOR PLATE ORIENTATION. WINDOW AND MULLION CONFIGURATIONS MAY VARY BY FLOOR. WINDOW SYSTEMS MAY INCLUDE PANELS, WALLS OR OTHER ARCHITECTURAL FEATURES THAT MAY BLOCK VIEWS AND REDUCE WINDOW GLAZING. TERRACE AREAS MAY INCLUDE PLANTERS. ALL MATTERS WILL BE GOVERNED ENTIRELY BY THE TERMS OF THE APPLICABLE DISCLOSURE STATEMENT AND PURCHASER CONTRACT IN EACH CASE. THIS IS NOT AN OFFERING FOR SALE. ANY SUCH OFFERING MAY ONLY BE MADE WITH THE APPLICABLE DISCLOSURE STATEMENT AND AGREEMENT OF PURCHASE AND SALE. CONCORD ARC LIMITED PARTNERSHIP E&OE.



F 1 BEDROOM & DEN

ENCLOSED AREA: 615 SF | OUTDOOR SPACE: 87 SF - 215 SF | TOTAL AREA: 702 SF - 830 SF

THE DEVELOPER RESERVES THE RIGHT TO MAKE MODIFICATIONS AND CHANGES TO FEATURES AND FINISHES, BRANDS, MATERIALS, BUILDING AND LANDSCAPE DESIGN, SPECIFICATIONS, CEILING HEIGHTS, NUMBER OF FLOORS, NUMBER OF UNITS, FLOORING PATTERNS AND FLOOR PLANS WITHOUT NOTIFICATION. APPROXIMATE SUITE SIZES ARE COMPUTED FROM THE OUTSIDE FACE OF EXTERIOR WALLS, THE OUTSIDE FACE OF CORRIDOR AND COMMON WALLS, AND THE CENTERLINE OF WALLS ADJACENT TO OTHER STRATA LOTS. APPROXIMATE MEASUREMENTS FOR EXTERIOR BALCONIES AND TERRACES ARE COMPUTED FROM THE OUTSIDE FACE OF EXTERIOR WALLS TO THE SLAB EDGES OF THE OUTSIDE FACE OF PARAPETS. BALCONY CONFIGURATION AND SIZE MAY VARY FLOOR TO FLOOR. ANY FLOORING PATTERN SHOWN ON THE PLAN DOES NOT INDICATE THE ACTUAL WOOD OR LAMINATE, TILE OR PAVER, SHAPE, SIZE OR DIRECTION INSTALLED. THE SAME SUITE TYPE MAY VARY FROM FLOOR TO FLOOR AND/OR BE SLIGHTLY ALTERED DEPENDING ON FLOOR PLATE ORIENTATION, WINDOW AND MULLION CONFIGURATIONS MAY VARY BY FLOOR, WINDOW SYSTEMS MAY INCLUDE PANELS, WALLS OR OTHER ARCHITECTURAL FEATURES THAT MAY BLOCK VIEWS AND REDUCE WINDOW GLAZING. TERRACE AREAS MAY INCLUDE PLANTERS. ALL MATTERS WILL BE GOVERNED ENTIRELY BY THE TERMS OF THE APPLICABLE DISCLOSURE STATEMENT AND PURCHASER CONTRACT IN EACH CASE. THIS IS NOT AN OFFERING FOR SALE. ANY SUCH OFFERING MAY ONLY BE MADE WITH THE APPLICABLE DISCLOSURE STATEMENT AND AGREEMENT OF PURCHASE AND SALE. CONCORD ARC LIMITED PARTNERSHIP E&OE.



D 1 BEDROOM

ENCLOSED AREA: 525 SF | OUTDOOR SPACE: 39 SF - 108 SF | TOTAL AREA: 564 SF - 633 SF

THE DEVELOPER RESERVES THE RIGHT TO MAKE MODIFICATIONS AND CHANGES TO FEATURES AND FINISHES, BRANDS, MATERIALS, BUILDING AND LANDSCAPE DESIGN, SPECIFICATIONS, CEILING HEIGHTS, NUMBER OF FLOORS, NUMBER OF UNITS, FLOORING PATTERNS AND FLOOR PLANS WITHOUT NOTIFICATION. APPROXIMATE SUITE SIZES ARE COMPUTED FROM THE OUTSIDE FACE OF EXTERIOR WALLS, THE OUTSIDE FACE OF CORRIDOR AND COMMON WALLS, AND THE CENTERLINE OF WALLS ADJACENT TO OTHER STRATA LOTS. APPROXIMATE MEASUREMENTS FOR EXTERIOR BALCONIES AND TERRACES ARE COMPUTED FROM THE OUTSIDE FACE OF EXTERIOR WALLS TO THE SLAB EDGES OF THE OUTSIDE FACE OF PARAPETS. BALCONY CONFIGURATION AND SIZE MAY VARY FLOOR TO FLOOR. ANY FLOORING PATTERN SHOWN ON THE PLAN DOES NOT INDICATE THE ACTUAL WOOD OR LAMINATE, TILE OR PAVER, SHAPE, SIZE OR DIRECTION INSTALLED. THE SAME SUITE TYPE MAY VARY FROM FLOOR TO FLOOR AND/OR BE SLIGHTLY ALTERED DEPENDING ON FLOOR PLATE ORIENTATION. WINDOW AND MULLION CONFIGURATIONS MAY VARY BY FLOOR. WINDOW SYSTEMS MAY INCLUDE PANELS, WALLS OR OTHER ARCHITECTURAL FEATURES THAT MAY BLOCK VIEWS AND REDUCE WINDOW GLAZING. TERRACE AREAS MAY INCLUDE PLANTERS. ALL MATTERS WILL BE GOVERNED ENTIRELY BY THE TERMS OF THE APPLICABLE DISCLOSURE STATEMENT AND PURCHASER CONTRACT IN EACH CASE. THIS IS NOT AN OFFERING FOR SALE. ANY SUCH OFFERING MAY ONLY BE MADE WITH THE APPLICABLE DISCLOSURE STATEMENT AND AGREEMENT OF PURCHASE AND SALE. CONCORD ARC LIMITED PARTNERSHIP E&OE.