



# 5536 HARDWICK STREET

MID-CENTURY MODERN. REIMAGINED. MASTERPIECE.

EPI-CENTER & HEART OF BURNABY





ESTATE-LIKE SINGLE FAMILY PRIVATE URBAN RETREAT  
FOR YOU. FOR YOUR FAMILY. FOR MORE SPACE.



PUT YOUR ROOTS DOWN FOR MANY GENERATIONS



PRESERVING HISTORY - IN SIZE & DESIGN

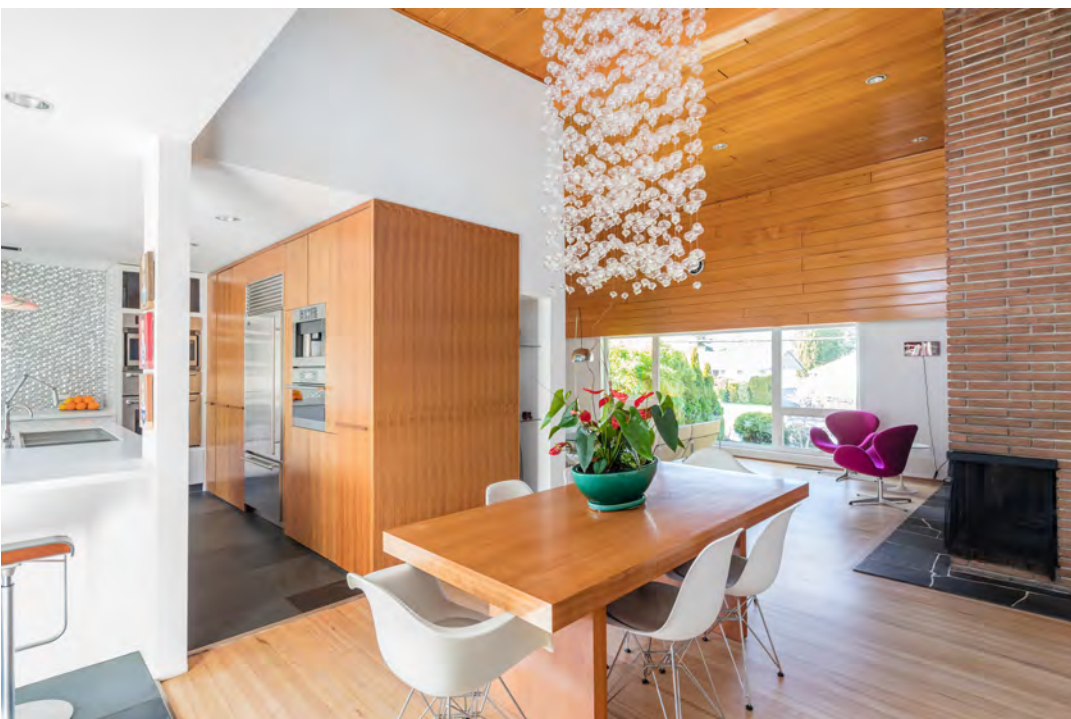








GALLERY WORTHY SHOWPIECES



IMMERSE YOURSELF IN STIMULATING CONVERSATION





ULTIMATE DREAMY MASTER CHEF'S KITCHEN



COHESIVE LIVING IN & OUT





RETREAT. REJUVENATE. REFRESH.





DISTINCTION IN EVERY ROOM



DESIGN DESERVING OF YOUR TIME





MORE ROOM FOR PLEASURE, HOBBIES & EVERY DAY TASKS



SOPHISTICATED ESCAPE





CUSTOMIZE YOUR CREATIVE SPACE

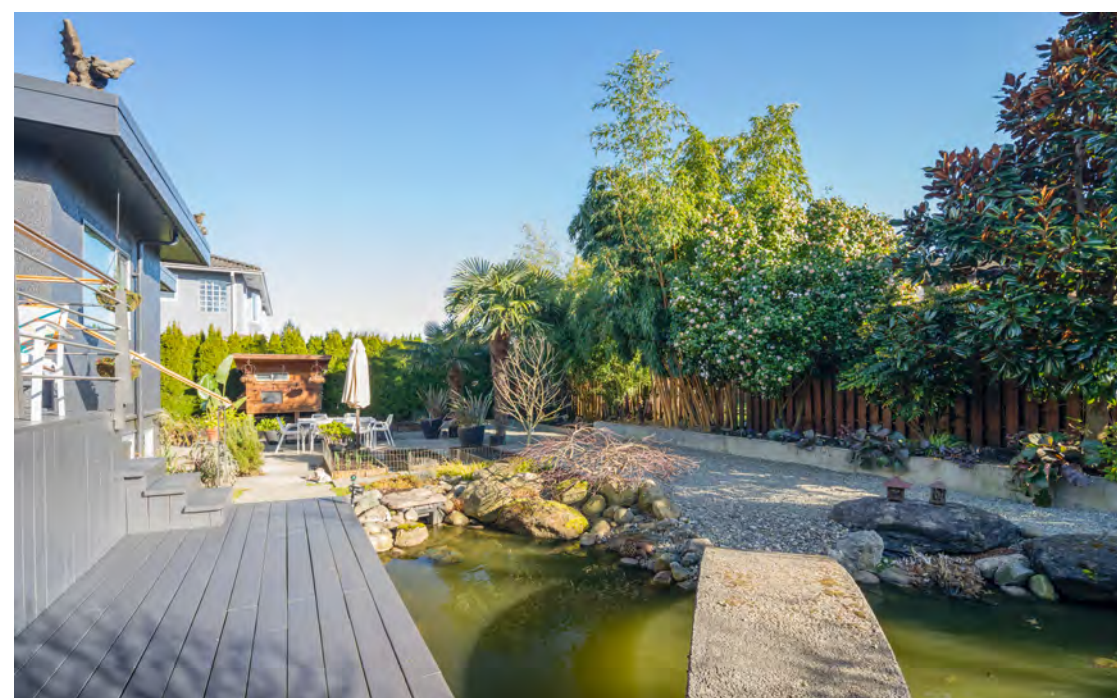


SECONDARY ONE BEDROOM SUITE THAT EARNS YOU INCOME





A FIRST CLASS RESORT RIGHT AT HOME



THE SERIOUS OUTDOOR BBQ ENTHUSIAST













MAJESTIC MOUNTAIN VISTAS TO GO WITH THE SUNRISE & SUNSETS



IDYLIC PICTURESQUE RESIDENTIAL NEIGHBORHOOD





# WHEN EVERY SPACE AROUND YOU IS A SHOWPIECE

## MASTER CRAFTED & CONSTRUCTION

- Truest form of Mid-Century Modern Architecture Circa 1956
- A rare offering of 75' wide x 107' Lot with sun-soaked backyard
- Rare massive front yard & 7 car asphalt driveway with attached single car garage with Anodized Aluminium garage doors
- Estate-like Total 8,025 Sqft Lot
- Two Level with up to 15' vaulted ceilings on main & 8' ceilings on lower including secondary suite.
- Elegant & sleek concrete steps wth custom steel roped & metal railing with wood topping (interior and exterior)
- Organic & stylish mix of concrete, brick, stucco, wood siding, cedar horizontal slatted siding, with fir wood front door with frosted glass
- Modern exterior sconce lighting throughout
- Meticulous Landscaping & Hardscaping
  - Stately contemporary large format concrete pavers
  - Tranquil Japanese inspired Koi Pond with stone walk on foot-bridge & miniature pagodas
  - Rock & gravel Garden
  - Greenhouse with irrigation, lighting and finished paved flooring
  - Mature flora and botanicals from Bamboo to Palms, Cedars and more
- Garden & vegetable boxes
- Manicured front lawn
- Concrete planters front & back and perimeter
- Private vertical & horizontal slat fence & doors
- Animal Coop
- concrete pavers
- Upper and Lower sundeck
- concrete retaining walls in front
- back patio concrete slab
- Privcy wall of cedars, bamboo & mature trees

- State-of-the-Art Built-In Outdoor BBQ Kitchen:
  - Viking BBQ
  - Corian countertop
  - Brushed Steel Aluminum backsplash
  - Stainless Steel Doors

## HISTORIC FORMS OF BEAUTY WITH MODERN LUXURIES

Distinctive of Mid-Century Modern Architecture & Design, the home emphasizes large functional rooms with angular aesthetics like the vaulted ceilings, decorative aesthetically pleasing finishes, minimalist clean lines, and seamlessly bringing the outdoors to the indoors.

- Stained cedar wide plank vaulted ceilings & beams on main level soaring up to 15' with pot-lights
- expansive large format windows for optimal light and views & wide format modern transom windows
  - Original mid-century wood burning fireplace with floor to ceiling brick wall surround & slate tiled hearth
  - Two-sided Gas fireplace with stone tile surround
- Waterfall glass globe chandelier in dining
- Large updated Skylight
- Restored Vintage Oak floors throughout with inlaid accents
- High style Slate flooring in entry, kitchen and bathrooms, Wool carpet in entertainment room
- Secondary suite with laminate floors, wool carpet in bedroom & white subway porcelain tile floors & bath surround
- Ceiling fan in Primary Bedroom
- Closet organizers & wall units
- Wine cellar and cold pantry in lower level with slate flrs.
- Laundry Room / Mudroom: with Full-size Kenmore Elite W/D Set, built-in cabinets with granite counters & double sink, upper shelving & cabinetry, S/S upright Freezer

## ULTIMATE MASTER CHEF DREAM KITCHEN

- VIKING 36" gas range
- THERMADOR Wall Oven, Microwave & Plate Warmer
- SUBZERO Fridge
- SUBZERO Double Drawer Undercounter Fridge
- MIELE Built-In Espresso Coffee Maker
- MIELE Steam Oven
- THERMADOR Microwave
- THERMADOR Plate Warmer
- KITCHENAID Dishwasher
- KOHLER Karbon Articulating Faucet
- FRANKE Soap Dispenser
- Hot water dispenser
- KOHLER Stages Tiered Stainless Steel 45" Sink
- FABER CRISTAL Slide-out Venthood
- Corian Countertop
- Custom Walnut veneer Wall Cabinets with pull-out shelving & pantry
- Polished white acrylic flat panelled lower cabinets
- Island with corian counters, polished white acrylic lower cabinetry & breakfast bar
- Sliding walnut veneer sliding kitchen doors
- Decorative Brushed Steel Aluminum backsplash
- Slide out shelving for upper cabinets
- Slide out shelving for lower cabinetry
- Slide out spices cabinet
- Vacuum sweep at kickboard
- Large format 24x24 slate tile flooring

## RESTORE, REFLECT, REJUVENATE

- Primary Ensuite Bathroom:
  - Duravit top-mounted cermic vessel sink with Grohe wall faucet
  - Radiant heated Slate floors & floor to ceiling wall & shower surround and shower niche
  - Floating wood veneer vanity with wide linear drawers & corian counters
  - Anti-fog heated & backlit shower mirror
  - Heated Tower Rack
  - Rainfall showerhead & handheld shower
  - Slate walk-in frameless glass enclosed curbless shower
  - Geberit in-wall toilet tank & wall flush with Duravit Cantilever Toilet

## SECONDARY SUITE - SEPERATE ENTRY

- Spacious One Bedroom self-contained unauthorized secondary suite with 8'0 ceilings
- Laminate floors, wood carpet & porcelain tiled floors
- Kenmore frige, electric range & dishwasher
- Broan Venthood
- Double sink in kitchen
- Laundry is shared with main house
- Arborite counters, top mounted sink and glossy white vanity
- White Subway tile surround walk-in shower
- Open modern floorpaln with dining, kitchen, living room and bedroom with plenty of natural light and windows
- Rented \$1200/mo. ending May 2021 and go month to month

## SECURITY, SUSTAINABILITY & EQUIPMENT

- Orbit Automatic Irrigation System with Irritrol Controller
- Honeywell hard-wire security system
- Electolux Central Vacuum system
- High efficiency Carrier gas furnace with central forced air heating
- John Wood Direct vent hot water tank
- Kidd Smoke alarms
- Kidd CO Detectors
- Single car garage with anodized aluminum garage doors with frosted linear windows
- Garage built-in cabinets and counters with wood block countertops
- Grey gloss epoxy garage floors & garage door opener
- Benjamin Moore exterior paint (3 yo)
- Westek Windows are 3.5 year old
- Westek Double patio doors 3.5 yo

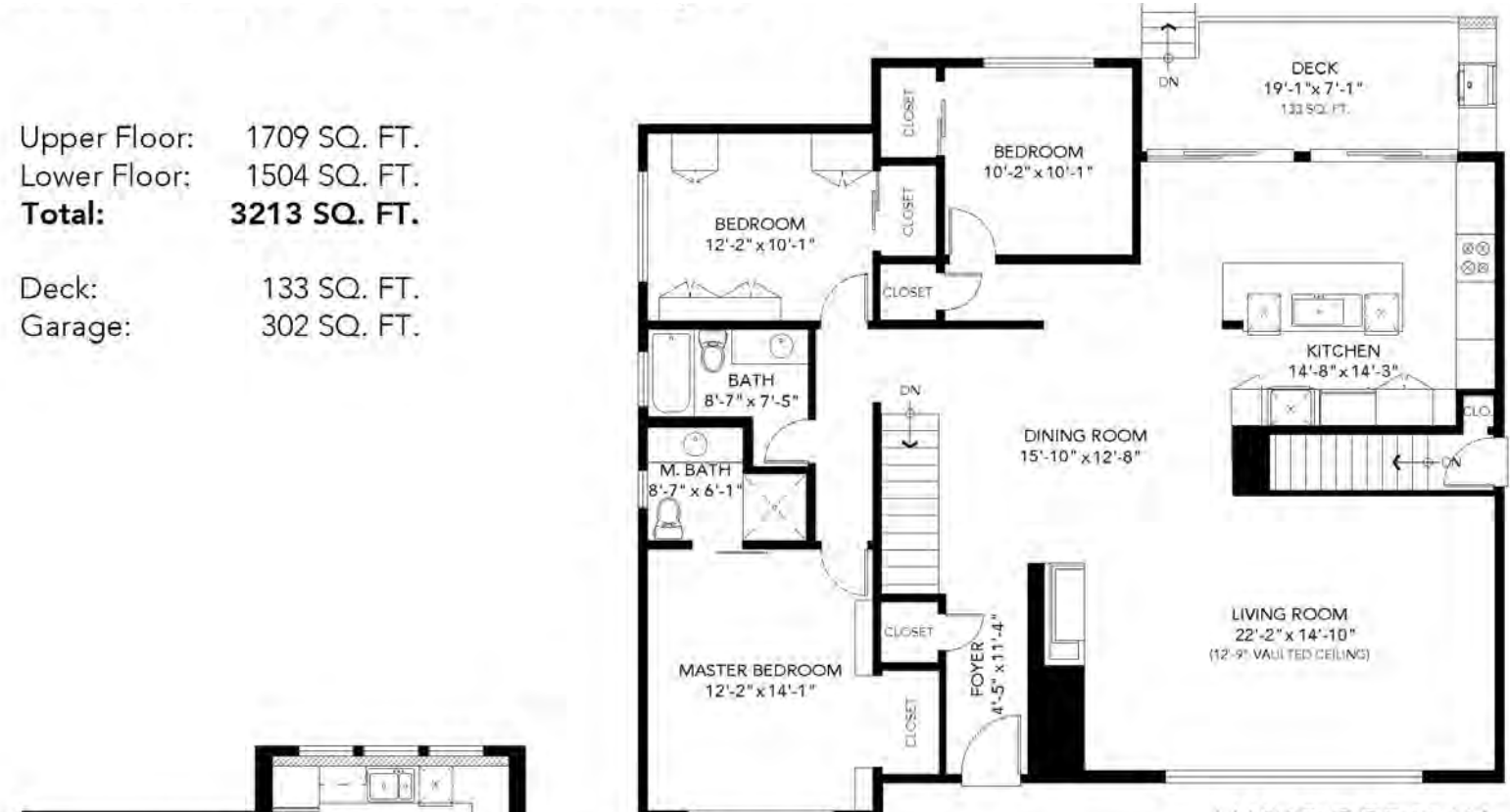
All listed above features are to be verified by the Buyer if deemed important. Dates, Sizes, Brands, materials and features may be different or be a variation of what is listed above and is not guaranteed to be included in the sale.

WE HOPE YOU ENJOYED THE TOUR OF THE HARDWICK PROPERTY  
MAKE THIS YOUR NEW PLACE TO CALL HOME



Upper Floor: 1709 SQ. FT.  
Lower Floor: 1504 SQ. FT.  
**Total: 3213 SQ. FT.**

Deck: 133 SQ. FT.  
Garage: 302 SQ. FT.



MAIN FLOOR PLAN  
Ceiling Height:  
8'-0" to 15'0" Vaulted  
Ceilings



LOWER FLOOR PLAN  
Ceiling Height: 8'-0"



**ANN LOK & JASMINE HUI**

urban residences\_modern living

604.767.0959  
ann@annlok.com  
www.annlok.com

604.725.6623  
jasminehui3@yahoo.com



THE FLOOR PLAN ILLUSTRATION IS NOT SUITABLE FOR CONSTRUCTION/ARCHITECTURAL PURPOSES. MEASUREMENTS ARE APPROXIMATE AND MAY NOT BE TO SCALE. E&O INSURED



IDYLIC RESIDENTIAL STREETS. GRAND PRIVATE LOTS. REPUTABLE SCHOOLS. NATURE ALL AROUND. SHOPS & EATERIES.

BURNABY  
TENNIS CLUB



BURNABY CENTRAL  
SECONDARY SCHOOL



BCIT CAMPUS



SAVE-ON



GILPIN  
ELEMENTARY

BRENTWOOD



BURNABY LAKE  
SPORTS COMPLEX

WHOLE  
FOODS

DEER LAKE  
SCHOOL



CENTRAL BURNABY



METROTOWN



BURNABY  
VILLAGE MUSEUM



DOUGLAS ROAD  
ELEMENTARY

DEER LAKE

BURNABY LAKE