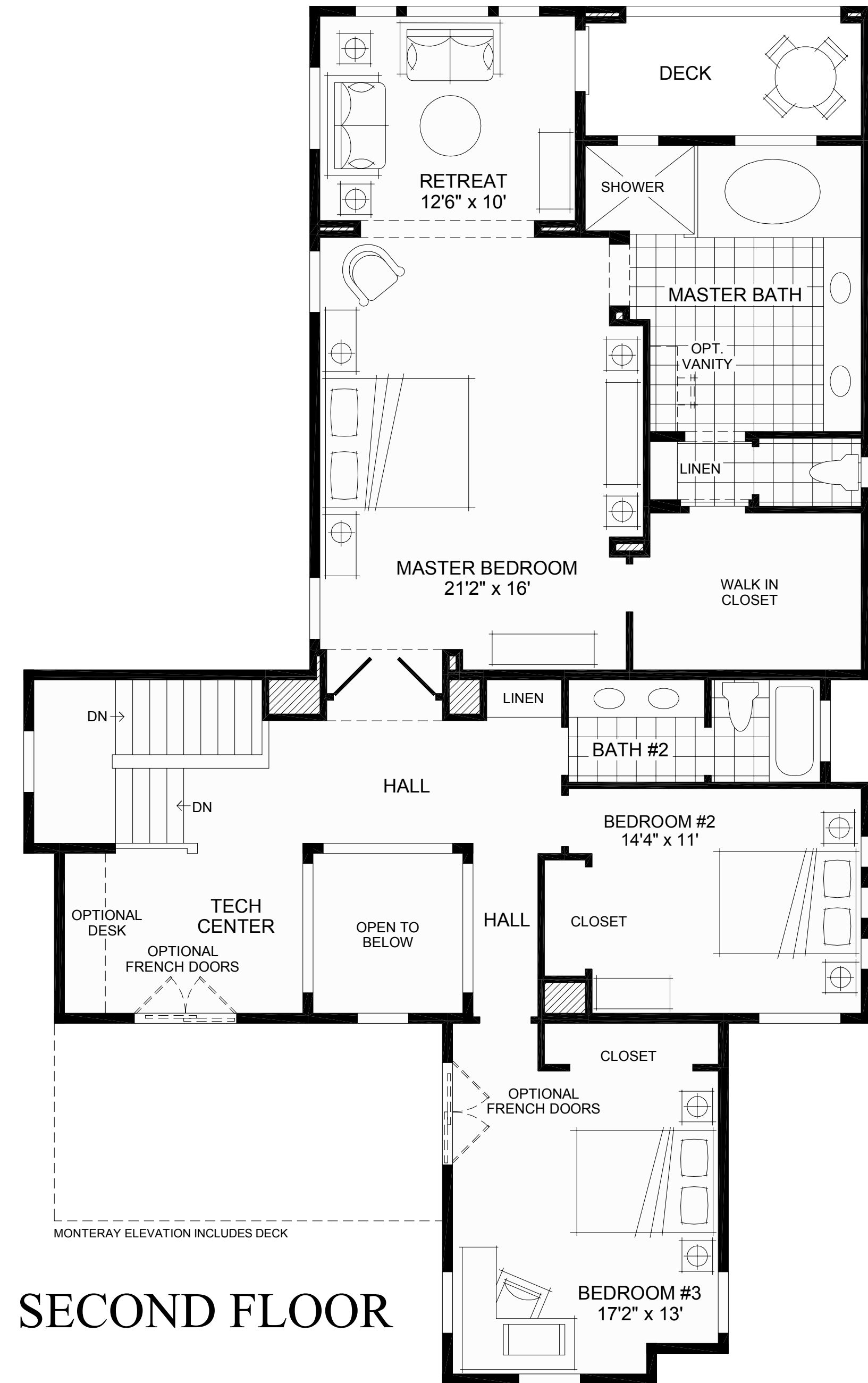
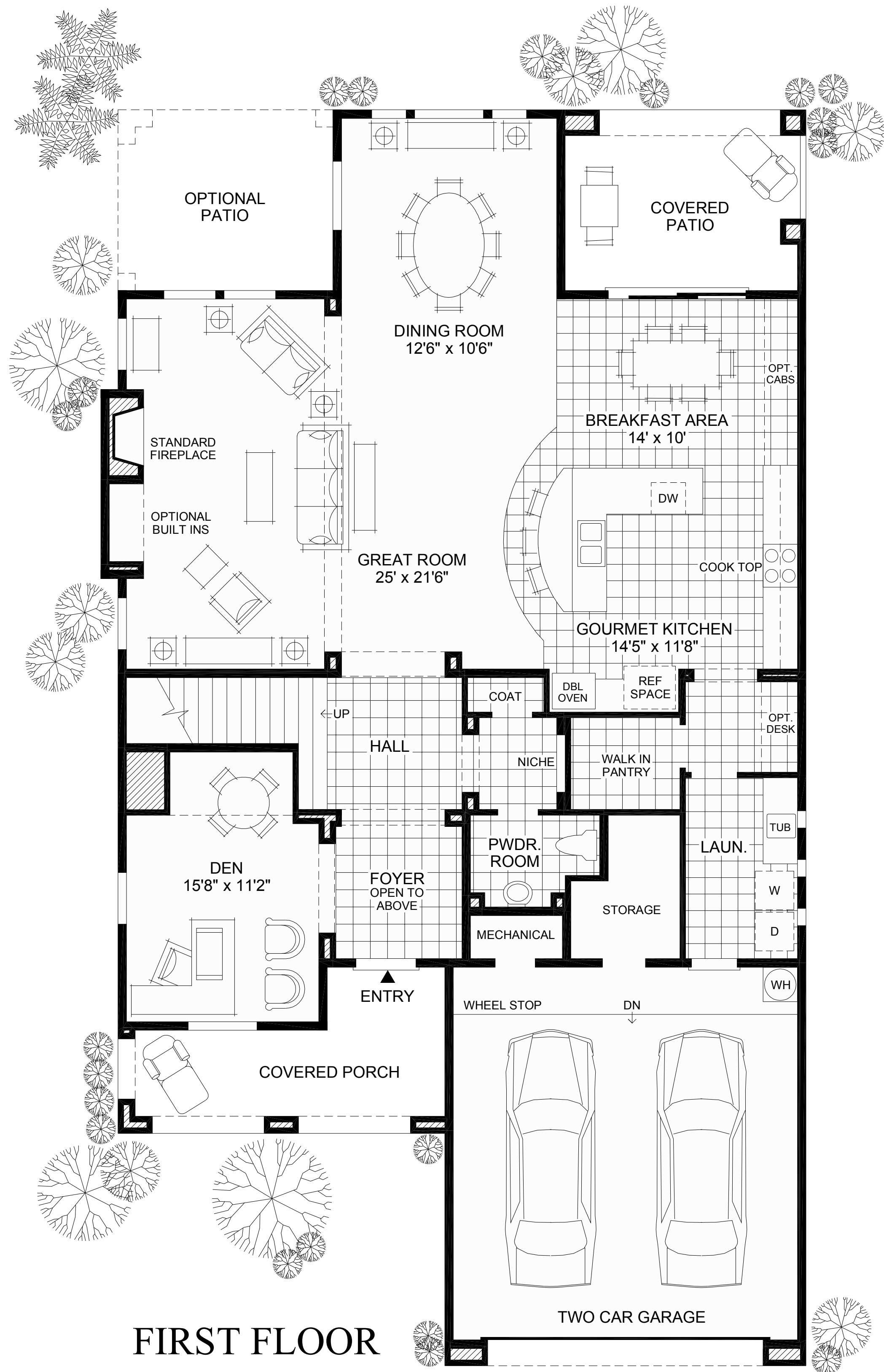


THE STRADA

- Gourmet kitchen with walk in pantry and center island.
- Spacious great room.
- Master suite features private retreat with luxurious bath, walk in closet and private balcony.
- 3 bedrooms, 2 ½ baths and study.
- 2 car garage.



All dimensions are approximate, shown to the maximum dimensions of each room, and are subject to field variation. Dimensions should not be used to calculate room square footage. Some windows, exterior features, ceiling heights, and floor plans may vary with elevations. Features may also vary from community to community. Please consult a Sales Manager for details. Options purchased must be specified in Exhibit B.

Toll Brothers
 America's Luxury Home Builder™
 tollbrothers.com

The floor plans and elevations of Toll Brothers homes are copyrighted. We have enforced and will continue to enforce our federal copyrights to protect the investment of our home buyers.

This insert was produced using recycled products. ♻️