

**7331 305 Arbutus Street, Pemberton, Winchester**

Status:	<b>Sold</b>	Built:	<b>2005</b>	Price:	<b>\$220,000</b>
Type:	<b>Condominium</b>	List Co:	<b>WREC</b>	Size:	<b>821</b>
L. Size:		Bed:	<b>2.0</b>	Bath:	<b>2.00</b>
List Date:	<b>06/14/2007</b>	MLS?:	<b>Y</b>		
Date Sold:	<b>10/24/2007</b>	Sld Price:	<b>\$216,000</b>	Includes Furniture?:	<b>N</b> Includes GST?: <b>N</b>

**1400 44 Park Street, Pemberton, Creekside Village**

Status:	<b>Sold</b>	Built:	<b>1996</b>	Price:	<b>\$269,000</b>
Type:	<b>Condominium</b>	List Co:	<b>WREC</b>	Size:	<b>1,227</b>
L. Size:		Bed:	<b>2.0</b>	Bath:	<b>1.50</b>
List Date:	<b>09/26/2007</b>	MLS?:	<b>Y</b>		
Date Sold:	<b>10/19/2007</b>	Sld Price:	<b>\$262,000</b>	Includes Furniture?:	<b>N</b> Includes GST?: <b>N</b>

**1450 35 Vine Road, Pemberton, Peaks**

Status:	<b>Sold</b>	Built:	<b>2002</b>	Price:	<b>\$282,000</b>
Type:	<b>Condominium</b>	List Co:	<b>RE/MAX</b>	Size:	<b>1,070</b>
L. Size:		Bed:	<b>2.0</b>	Bath:	<b>2.00</b>
List Date:	<b>08/20/2007</b>	MLS?:	<b>N</b>		
Date Sold:	<b>10/22/2007</b>	Sld Price:	<b>\$278,000</b>	Includes Furniture?:	<b>N</b> Includes GST?: <b>N</b>

**1400 6 Park Street, Pemberton, Creekside Village**

Status:	<b>Sold</b>	Built:	<b>1997</b>	Price:	<b>\$319,000</b>
Type:	<b>Condominium</b>	List Co:	<b>RE/MAX</b>	Size:	<b>1,409</b>
L. Size:		Bed:	<b>3.0</b>	Bath:	<b>2.50</b>
List Date:	<b>06/27/2007</b>	MLS?:	<b>Y</b>		
Date Sold:	<b>10/05/2007</b>	Sld Price:	<b>\$299,000</b>	Includes Furniture?:	<b>N</b> Includes GST?: <b>N</b>

**7408 21 Cottonwood Street, Pemberton, Cottonwood Court**

Status:	<b>Sold</b>	Built:	<b>1996</b>	Price:	<b>\$319,900</b>
Type:	<b>Condominium</b>	List Co:	<b>RE/MAX</b>	Size:	<b>0</b>
L. Size:		Bed:	<b>3.0</b>	Bath:	<b>2.50</b>
List Date:	<b>07/06/2007</b>	MLS?:	<b>Y</b>		
Date Sold:	<b>10/06/2007</b>	Sld Price:	<b>\$313,000</b>	Includes Furniture?:	<b>N</b> Includes GST?: <b>N</b>

**7381 3 Laurel Street, Pemberton, Monte Vale**

Status:	<b>Sold</b>	Built:	<b>1997</b>	Price:	<b>\$349,000</b>
Type:	<b>Condominium</b>	List Co:	<b>RE/MAX</b>	Size:	<b>1,666</b>
L. Size:	<b>na</b>	Bed:	<b>3.5</b>	Bath:	<b>2.00</b>
List Date:	<b>10/10/2007</b>	MLS?:	<b>Y</b>		
Date Sold:	<b>10/29/2007</b>	Sld Price:	<b>\$330,000</b>	Includes Furniture?:	<b>N</b> Includes GST?: <b>N</b>

**1450 67 Vine Road, Pemberton, Peaks**

Status:	<b>Sold</b>	Built:	<b>2002</b>	Price:	<b>\$359,000</b>
Type:	<b>Condominium</b>	List Co:	<b>RE/MAX</b>	Size:	<b>1,344</b>
L. Size:		Bed:	<b>3.0</b>	Bath:	<b>2.00</b>
List Date:	<b>10/09/2007</b>	MLS?:	<b>Y</b>		
Date Sold:	<b>10/29/2007</b>	Sld Price:	<b>\$349,000</b>	Includes Furniture?:	<b>N</b> Includes GST?: <b>N</b>

**1446 5 Vine Road, Pemberton, Pioneer Junction**

Status:	<b>Sold</b>	Built:	<b>2003</b>	Price:	<b>\$359,900</b>
Type:	<b>Condominium</b>	List Co:	<b>RE/MAX</b>	Size:	<b>1,361</b>
L. Size:		Bed:	<b>3.0</b>	Bath:	<b>2.00</b>
List Date:	<b>09/19/2007</b>	MLS?:	<b>Y</b>		
Date Sold:	<b>10/09/2007</b>	Sld Price:	<b>\$352,500</b>	Includes Furniture?:	<b>N</b> Includes GST?: <b>N</b>

**1450 51 Vine Road, Pemberton, Peaks**

Status:	<b>Sold</b>	Built:	<b>2001</b>	Price:	<b>\$364,900</b>	*
Type:	<b>Condominium</b>	List Co:	<b>RE/MAX</b>	Size:	<b>1,467</b>	
L. Size:		Bed:	<b>3.5</b>	Bath:	<b>2.00</b>	
List Date:	<b>09/16/2007</b>	MLS?:	<b>Y</b>			
Date Sold:	<b>10/09/2007</b>	Sld Price:	<b>\$355,000</b>	Includes Furniture?:	<b>N</b>	Includes GST?: <b>Y</b>

**7360 2 Pemberton Farm Road, Pemberton, Pemberton Plateau Townhomes**

Status:	<b>Sold</b>	Built:	<b>2005</b>	Price:	<b>\$379,000</b>	*
Type:	<b>Condominium</b>	List Co:	<b>SWCR</b>	Size:	<b>1,832</b>	
L. Size:		Bed:	<b>3.0</b>	Bath:	<b>2.50</b>	
List Date:	<b>08/12/2007</b>	MLS?:	<b>Y</b>			
Date Sold:	<b>10/23/2007</b>	Sld Price:	<b>\$375,000</b>	Includes Furniture?:	<b>N</b>	Includes GST?: <b>N</b>

**7634 Pemberton Meadows Road, Pemberton,**

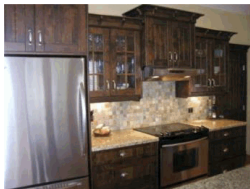
Status:	<b>Sold</b>	Built:	<b>1991</b>	Price:	<b>\$379,000</b>	
Type:	<b>Mobile Home</b>	List Co:	<b>WREC</b>	Size:	<b>1,430</b>	
L. Size:	<b>15333</b>	Bed:	<b>3.0</b>	Bath:	<b>2.00</b>	
List Date:	<b>09/20/2007</b>	MLS?:	<b>N</b>			
Date Sold:	<b>10/21/2007</b>	Sld Price:	<b>\$365,000</b>	Includes Furniture?:	<b>N</b>	Includes GST?: <b>N</b>

**7360 23 Pemberton Farm Road, Pemberton, Pemberton Plateau Townhomes**

Status:	<b>Sold</b>	Built:	<b>2003</b>	Price:	<b>\$389,000</b>	*
Type:	<b>Condominium</b>	List Co:	<b>SWCR</b>	Size:	<b>1,924</b>	
L. Size:		Bed:	<b>3.0</b>	Bath:	<b>2.50</b>	
List Date:	<b>07/07/2007</b>	MLS?:	<b>Y</b>			
Date Sold:	<b>10/10/2007</b>	Sld Price:	<b>\$375,000</b>	Includes Furniture?:	<b>N</b>	Includes GST?: <b>N</b>

**1999 Sea to Sky Highway, Pemberton,**

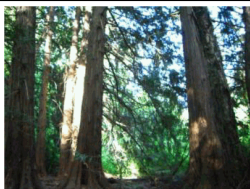
Status:	<b>Sold</b>	Built:	<b>0T</b>	Price:	<b>\$429,000</b>	*
Type:	<b>Chalet</b>	List Co:	<b>WREC</b>	Size:	<b>3,920</b>	
L. Size:	<b>2.54 acres</b>	Bed:	<b>4.0</b>	Bath:	<b>2.00</b>	
List Date:	<b>05/04/2007</b>	MLS?:	<b>Y</b>			
Date Sold:	<b>10/10/2007</b>	Sld Price:	<b>\$410,000</b>	Includes Furniture?:	<b>N</b>	Includes GST?: <b>N</b>

**1763 Pinewood Drive, Pemberton,**

Status:	<b>Sold</b>	Built:	<b>2004</b>	Price:	<b>\$889,000</b>	
Type:	<b>Chalet</b>	List Co:	<b>RE/MAX</b>	Size:	<b>4,572</b>	
L. Size:	<b>8966</b>	Bed:	<b>3.0</b>	Bath:	<b>2.50</b>	
List Date:	<b>10/25/2006</b>	MLS?:	<b>Y</b>			
Date Sold:	<b>10/04/2007</b>	Sld Price:	<b>\$860,000</b>	Includes Furniture?:	<b>N</b>	Includes GST?: <b>N</b>

**9692 Devine Street, Devine,**

Status:	<b>Sold</b>	Built:	<b>1970</b>	Price:	<b>\$165,000</b>	*
Type:	<b>Chalet</b>	List Co:	<b>SWCR</b>	Size:	<b>800</b>	
L. Size:	<b>1.82 acres</b>	Bed:	<b>2.5</b>	Bath:	<b>1.00</b>	
List Date:	<b>03/13/2007</b>	MLS?:	<b>Y</b>			
Date Sold:	<b>10/29/2007</b>	Sld Price:	<b>\$157,000</b>	Includes Furniture?:	<b>N</b>	Includes GST?: <b>N</b>

**Cedar Gates, Birken,**

Status:	<b>Sold</b>	Built:		Price:	<b>\$345,000</b>	*
Type:	<b>Vacant Land</b>	List Co:	<b>WREC</b>	Size:		
L. Size:	<b>15.38 acres</b>	Bed:		Bath:		
List Date:	<b>06/27/2007</b>	MLS?:	<b>Y</b>			
Date Sold:	<b>10/18/2007</b>	Sld Price:	<b>\$330,000</b>	Includes Furniture?:	<b>N</b>	Includes GST?: <b>N</b>