

**4308 46 Main Street, Village, Delta Whistler Village Suites**

Status:	Sold	Built:	1997	Price:	\$14,000
Type:	Prk. Stall	List Co:	WREC	Size:	
L. Size:		Bed:	.0	Bath:	0.00
List Date:	11/14/2002	MLS?:	N		
Date Sold:	12/20/2002	Sld Price:	\$14,000	Includes Furniture?:	N Includes GST?: N

**4295 608 Blackcomb Way, Village, Holiday Inn**

Status:	Sold	Built:	1995	Price:	\$122,800
Type:	Condominium	List Co:	SWCR	Size:	306
L. Size:		Bed:	.5	Bath:	1.00
List Date:	11/22/2002	MLS?:	N		
Date Sold:	12/04/2002	Sld Price:	\$122,000	Includes Furniture?:	Y Includes GST?: N

**4295 604 Blackcomb Way, Village, Holiday Inn**

Status:	Sold	Built:	1995	Price:	\$125,000
Type:	Condominium	List Co:	WREC	Size:	311
L. Size:		Bed:	.5	Bath:	1.00
List Date:	10/24/2002	MLS?:	N		
Date Sold:	12/12/2002	Sld Price:	\$122,000	Includes Furniture?:	Y Includes GST?: N

**4295 428 Blackcomb Way, Village, Holiday Inn**

Status:	Sold	Built:	1995	Price:	\$129,500
Type:	Condominium	List Co:	RE/MAX	Size:	322
L. Size:		Bed:	.5	Bath:	1.00
List Date:	10/02/2002	MLS?:	Y		
Date Sold:	12/16/2002	Sld Price:	\$126,000	Includes Furniture?:	N Includes GST?: N

**2036 216A London Lane, Whistler Creek, Legends**

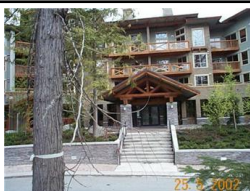
Status:	Sold	Built:	2001	Price:	\$149,000
Type:	Shared Owner	List Co:	RE/MAX	Size:	921
L. Size:		Bed:	2.0	Bath:	2.00
List Date:	08/30/2002	MLS?:	N		
Date Sold:	12/09/2002	Sld Price:	\$147,000	Includes Furniture?:	Y Includes GST?: N

**4369 201 Main Street, Village, Alpenglow**

Status:	Sold	Built:	1997	Price:	\$164,000
Type:	Condominium	List Co:	RE/MAX	Size:	437
L. Size:		Bed:	.5	Bath:	1.00
List Date:	10/16/2002	MLS?:	Y		
Date Sold:	12/03/2002	Sld Price:	\$164,000	Includes Furniture?:	N Includes GST?: N

**2111 303 Whistler Road, Whistler Creek, Vale Inn**

Status:	Sold	Built:	1976	Price:	\$169,000
Type:	Condominium	List Co:	RE/MAX	Size:	396
L. Size:		Bed:	1.0	Bath:	1.00
List Date:	11/09/2002	MLS?:	N		
Date Sold:	12/11/2002	Sld Price:	\$160,000	Includes Furniture?:	Y Includes GST?: N

**4653 101 Blackcomb G2 Way, Benchlands, Horstman House**

Status:	Sold	Built:	2000	Price:	\$172,500
Type:	Shared Owner	List Co:	RE/MAX	Size:	1,170
L. Size:		Bed:	2.0	Bath:	2.50
List Date:	10/31/2002	MLS?:	N		
Date Sold:	12/27/2002	Sld Price:	\$160,000	Includes Furniture?:	Y Includes GST?: N

**4308 1428 Main Street, Village, Delta Whistler Village Suites**

Status:	Sold	Built:	1997	Price:	\$176,000
Type:	Condominium	List Co:	RE/MAX	Size:	231
L. Size:		Bed:	.5	Bath:	1.00
List Date:	11/20/2002	MLS?:	N		
Date Sold:	12/23/2002	Sld Price:	\$176,000	Includes Furniture?:	N Includes GST?: N

**4369 203 Main Street, Village, Alpenglouw**

Status:	Sold	Built:	1997	Price:	\$198,000
Type:	Condominium	List Co:	WREC	Size:	413
L. Size:		Bed:	.8	Bath:	1.00
List Date:	12/02/2002	MLS?:	N		
Date Sold:	12/13/2002	Sld Price:	\$198,000	Includes Furniture?:	Y Includes GST?: N

**2111 401 Whistler Road, Whistler Creek, Vale Inn**

Status:	Sold	Built:	1976	Price:	\$209,000
Type:	Condominium	List Co:	WREC	Size:	545
L. Size:		Bed:	1.0	Bath:	1.00
List Date:	10/25/2002	MLS?:	N		
Date Sold:	12/03/2002	Sld Price:	\$198,800	Includes Furniture?:	N Includes GST?: N

**4899 627 Painted Cliff Road, Benchlands, Blackcomb Springs**

Status:	Sold	Built:	1996	Price:	\$215,000
Type:	Condominium	List Co:	WREC	Size:	432
L. Size:		Bed:	.5	Bath:	1.00
List Date:	12/06/2002	MLS?:	N		
Date Sold:	12/18/2002	Sld Price:	\$211,000	Includes Furniture?:	N Includes GST?: N

**4899 516 Painted Cliff Road, Benchlands, Blackcomb Springs**

Status:	Sold	Built:	1996	Price:	\$218,000
Type:	Condominium	List Co:	RE/MAX	Size:	432
L. Size:		Bed:	.5	Bath:	1.00
List Date:	11/08/2002	MLS?:	N		
Date Sold:	12/15/2002	Sld Price:	\$215,000	Includes Furniture?:	Y Includes GST?: N

**2111 413 Whistler Road, Whistler Creek, Vale Inn**

Status:	Sold	Built:	1976	Price:	\$219,000
Type:	Condominium	List Co:	WREC	Size:	536
L. Size:		Bed:	1.0	Bath:	1.00
List Date:	12/21/2002	MLS?:	N		
Date Sold:	12/30/2002	Sld Price:	\$209,000	Includes Furniture?:	N Includes GST?: N

**4090 473 Whistler Way, Village, Westin**

Status:	Sold	Built:	2000	Price:	\$263,000
Type:	Condominium	List Co:	WREC	Size:	408
L. Size:		Bed:	.5	Bath:	1.00
List Date:	10/11/2002	MLS?:	N		
Date Sold:	12/12/2002	Sld Price:	\$258,000	Includes Furniture?:	Y Includes GST?: N

**2130 3 Sarajevo Drive, Whistler Creek, Gondola Village**

Status:	Sold	Built:	1985	Price:	\$269,000
Type:	Condominium	List Co:	RE/MAX	Size:	400
L. Size:		Bed:	1.0	Bath:	1.00
List Date:	12/11/2002	MLS?:	N		
Date Sold:	12/31/2002	Sld Price:	\$272,000	Includes Furniture?:	N Includes GST?: N

**4314 262 Main Street, Village, Town Plaza**

Status:	Sold	Built:	1997	Price:	\$279,000
Type:	Condominium	List Co:	WREC	Size:	404
L. Size:		Bed:	.5	Bath:	1.00
List Date:	11/06/2002	MLS?:	N		
Date Sold:	12/06/2002	Sld Price:	\$274,000	Includes Furniture?:	N Includes GST?: N

**2005 121 Nordic Place, Nordic, Nordic Court**

Status:	Sold	Built:	1988	Price:	\$279,000
Type:	Condominium	List Co:	WREC	Size:	700
L. Size:		Bed:	2.0	Bath:	1.00
List Date:	08/09/2002	MLS?:	N		
Date Sold:	12/09/2002	Sld Price:	\$255,000	Includes Furniture?:	N Includes GST?: N

**4314 241 Main Street, Village, Town Plaza**

Status:	Sold	Built:	1996	Price:	\$299,000
Type:	Condominium	List Co:	WREC	Size:	435
L. Size:		Bed:	.5	Bath:	1.00
List Date:	12/03/2002	MLS?:	N		
Date Sold:	12/13/2002	Sld Price:	\$299,000	Includes Furniture?:	Y Includes GST?: N

**4385 27 Northlands Boulevard, Village, Symphony**

Status:	Sold	Built:	1996	Price:	\$339,000
Type:	Townhouse	List Co:	RE/MAX	Size:	475
L. Size:		Bed:	.5	Bath:	1.00
List Date:	11/16/2002	MLS?:	N		
Date Sold:	12/20/2002	Sld Price:	\$334,500	Includes Furniture?:	Y Includes GST?: N

**4315 310 Northlands Boulevard, Village, Cascade Lodge**

Status:	Sold	Built:	1998	Price:	\$339,000
Type:	Condominium	List Co:	WREC	Size:	591
L. Size:		Bed:	1.0	Bath:	1.00
List Date:	11/19/2002	MLS?:	N		
Date Sold:	12/02/2002	Sld Price:	\$335,000	Includes Furniture?:	Y Includes GST?: N

**4308 1227 Main Street, Village, Delta Whistler Village Suites**

Status:	Sold	Built:	1998	Price:	\$375,000
Type:	Condominium	List Co:	WREC	Size:	613
L. Size:		Bed:	1.0	Bath:	1.00
List Date:	11/28/2002	MLS?:	N		
Date Sold:	12/17/2002	Sld Price:	\$370,000	Includes Furniture?:	N Includes GST?: N

**4350 238 Lorimer Road, Village, Market Place Lodge**

Status:	Sold	Built:	1993	Price:	\$379,000
Type:	Condominium	List Co:	RE/MAX	Size:	548
L. Size:		Bed:	1.0	Bath:	1.00
List Date:	11/16/2002	MLS?:	N		
Date Sold:	12/05/2002	Sld Price:	\$379,000	Includes Furniture?:	N Includes GST?: N

**4090 474 Whistler Way, Village, Westin**

Status:	Sold	Built:	2000	Price:	\$395,000
Type:	Condominium	List Co:	RE/MAX	Size:	582
L. Size:		Bed:	1.0	Bath:	1.00
List Date:	11/15/2002	MLS?:	N		
Date Sold:	12/20/2002	Sld Price:	\$385,000	Includes Furniture?:	N Includes GST?: N

**3070 208 Hillcrest. Drive, Alta Vista, Alta Vista 2**

Status:	Sold	Built:	1995	Price:	\$395,000
Type:	Townhouse	List Co:	WREC	Size:	758
L. Size:		Bed:	2.5	Bath:	2.00
List Date:	08/19/2002	MLS?:	N		
Date Sold:	12/13/2002	Sld Price:	\$386,000	Includes Furniture?:	N Includes GST?: N

**4809 211 Spearhead Drive, Benchlands, Marquise**

Status:	Sold	Built:	1990	Price:	\$399,000
Type:	Condominium	List Co:	RE/MAX	Size:	575
L. Size:		Bed:	1.0	Bath:	1.00
List Date:	10/10/2002	MLS?:	N		
Date Sold:	12/09/2002	Sld Price:	\$395,000	Includes Furniture?:	N Includes GST?: Y

**70 Black Tusk Lane, Pinecrest,**

Status:	Sold	Built:	1996	Price:	\$439,900
Type:	Chalet	List Co:	WREC	Size:	1,000
L. Size:	4373	Bed:	2.5	Bath:	1.00
List Date:	10/19/2002	MLS?:	N		
Date Sold:	12/20/2002	Sld Price:	\$430,000	Includes Furniture?:	N Includes GST?: Y

**4375 52 Northands Boulevard, Village, Valhalla**

Status:	Sold	Built:	1993	Price:	\$449,900
Type:	Townhouse	List Co:	RE/MAX	Size:	871
L. Size:		Bed:	1.0	Bath:	1.50
List Date:	11/27/2002	MLS?:	N		
Date Sold:	12/19/2002	Sld Price:	\$430,000	Includes Furniture?:	N Includes GST?: N

**4800 422 Spearhead Drive, Benchlands, Aspens**

Status:	Sold	Built:	1994	Price:	\$459,000
Type:	Condominium	List Co:	RE/MAX	Size:	590
L. Size:		Bed:	1.0	Bath:	1.00
List Date:	11/13/2002	MLS?:	N		
Date Sold:	12/03/2002	Sld Price:	\$448,000	Includes Furniture?:	Y Includes GST?: N

4573 105 Chateau Boulevard, Benchlands, Glacier Lodge

Status:	Sold	Built:	1988	Price:	\$459,000
Type:	Condominium	List Co:	RE/MAX	Size:	617
L. Size:		Bed:	1.0	Bath:	1.00
List Date:	10/29/2002	MLS?:	N		
Date Sold:	12/27/2002	Sld Price:	\$459,000	Includes Furniture?:	N Includes GST?: N

**2250 33 Nordic Drive, Nordic, Taluswood**

Status:	Sold	Built:	1997	Price:	\$519,000
Type:	Townhouse	List Co:	WREC	Size:	754
L. Size:		Bed:	1.0	Bath:	1.00
List Date:	12/15/2002	MLS?:	N		
Date Sold:	12/24/2002	Sld Price:	\$495,000	Includes Furniture?:	N Includes GST?: N

**7045 3 Nesters Road, Nesters, Villa Sol**

Status:	Sold	Built:	1981	Price:	\$529,000
Type:	Townhouse	List Co:	RE/MAX	Size:	1,460
L. Size:		Bed:	4.0	Bath:	3.00
List Date:	06/23/2002	MLS?:	N		
Date Sold:	12/18/2002	Sld Price:	\$520,000	Includes Furniture?:	N Includes GST?: N

**4660 527 Blackcomb Way, Benchlands, Lost Lake Lodge**

Status:	Sold	Built:	1998	Price:	\$529,000
Type:	Condominium	List Co:	WREC	Size:	816
L. Size:		Bed:	1.5	Bath:	1.00
List Date:	11/26/2002	MLS?:	N		
Date Sold:	12/07/2002	Sld Price:	\$525,000	Includes Furniture?:	N Includes GST?: N

**2014 12 London Lane, Whistler Creek, London Lane**

Status:	Sold	Built:	1986	Price:	\$599,900
Type:	Townhouse	List Co:	RE/MAX	Size:	935
L. Size:		Bed:	2.5	Bath:	3.00
List Date:	02/03/2002	MLS?:	N		
Date Sold:	12/23/2002	Sld Price:	\$570,000	Includes Furniture?:	Y Includes GST?: N

**2564 Tricouni Place, Bayshores,**

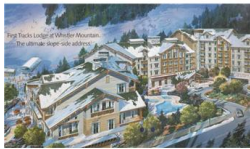
Status:	Sold	Built:	1979	Price:	\$609,000
Type:	Duplex	List Co:	WREC	Size:	1,723
L. Size:		Bed:	3.0	Bath:	3.00
List Date:	08/22/2002	MLS?:	N		
Date Sold:	12/08/2002	Sld Price:	\$570,000	Includes Furniture?:	N Includes GST?: N

**2231 Brandywine Way, Bayshores,**

Status:	Sold	Built:	1988	Price:	\$619,000
Type:	Duplex	List Co:	RE/MAX	Size:	1,750
L. Size:		Bed:	3.0	Bath:	2.00
List Date:	10/19/2002	MLS?:	N		
Date Sold:	12/19/2002	Sld Price:	\$599,000	Includes Furniture?:	N Includes GST?: Y

**4090 754 Whistler Way, Village, Westin**

Status:	Sold	Built:	2000	Price:	\$644,000
Type:	Condominium	List Co:	WREC	Size:	758
L. Size:		Bed:	2.0	Bath:	2.00
List Date:	09/15/2002	MLS?:	N		
Date Sold:	12/31/2002	Sld Price:	\$620,000	Includes Furniture?:	Y Includes GST?: N

**2202 305 Gondola Way, Whistler Creek, First Tracks Lodge**

Status:	Sold	Built:	2002	Price:	\$645,000
Type:	Condominium	List Co:	WREC	Size:	940
L. Size:		Bed:	1.5	Bath:	2.00
List Date:	05/27/2002	MLS?:	N		
Date Sold:	12/05/2002	Sld Price:	\$638,000	Includes Furniture?:	Y Includes GST?: N

**4857 26 Painted Cliff Road, Benchlands, Foxglove**

Status:	Sold	Built:	1992	Price:	\$698,000
Type:	Townhouse	List Co:	WREC	Size:	875
L. Size:		Bed:	1.5	Bath:	1.00
List Date:	11/29/2002	MLS?:	N		
Date Sold:	12/23/2002	Sld Price:	\$690,000	Includes Furniture?:	Y Includes GST?: N

**3354 Panorama Ridge, Brio,**

Status:	Sold	Built:	1980	Price:	\$799,000
Type:	Chalet	List Co:	RE/MAX	Size:	1,725
L. Size:	13,159 SF	Bed:	4.0	Bath:	2.00
List Date:	12/03/2002	MLS?:	N		
Date Sold:	12/24/2002	Sld Price:	\$795,000	Includes Furniture?:	Y Includes GST?: N

**2301 17 Taluswood Place, Nordic, Bluffs**

Status:	Sold	Built:	2000	Price:	\$799,000
Type:	Townhouse	List Co:	RE/MAX	Size:	1,001
L. Size:		Bed:	2.0	Bath:	2.00
List Date:	12/04/2002	MLS?:	N		
Date Sold:	12/19/2002	Sld Price:	\$779,000	Includes Furniture?:	N Includes GST?: N

**4857 32 Painted Cliff Road, Benchlands, Foxglove**

Status:	Sold	Built:	1988	Price:	\$829,000
Type:	Townhouse	List Co:	RE/MAX	Size:	1,376
L. Size:		Bed:	3.0	Bath:	2.00
List Date:	08/28/2002	MLS?:	Y		
Date Sold:	12/28/2002	Sld Price:	\$800,000	Includes Furniture?:	N Includes GST?: N

**8154 Meadow Lane, Alpine Meadows,**

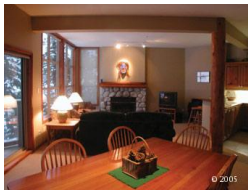
Status:	Sold	Built:	1978	Price:	\$839,000
Type:	Chalet	List Co:	RE/MAX	Size:	1,750
L. Size:	12649	Bed:	3.0	Bath:	2.00
List Date:	06/03/2002	MLS?:	N		
Date Sold:	12/19/2002	Sld Price:	\$839,000	Includes Furniture?:	N Includes GST?: N

**3286 Arbutus Drive, Brio,**

Status:	Sold	Built:	1979	Price:	\$859,000
Type:	Chalet	List Co:	WREC	Size:	2,440
L. Size:	16800 SF	Bed:	6.0	Bath:	2.50
List Date:	09/10/2002	MLS?:	N		
Date Sold:	12/29/2002	Sld Price:	\$808,000	Includes Furniture?:	Y Includes GST?: Y

**4701 1 Glacier Drive, Benchlands, Cedar Hollow**

Status:	Sold	Built:	1987	Price:	\$929,000
Type:	Townhouse	List Co:	WREC	Size:	1,000
L. Size:		Bed:	2.0	Bath:	1.50
List Date:	11/26/2002	MLS?:	N		
Date Sold:	12/08/2002	Sld Price:	\$920,000	Includes Furniture?:	Y Includes GST?: Y

**4644 9 Blackcomb Way, Benchlands, Blackcomb Greens**

Status:	Sold	Built:	1993	Price:	\$949,000
Type:	Townhouse	List Co:	WREC	Size:	1,070
L. Size:		Bed:	2.0	Bath:	2.00
List Date:	11/19/2002	MLS?:	N		
Date Sold:	12/24/2002	Sld Price:	\$925,000	Includes Furniture?:	Y Includes GST?: N

**2112 1 Nordic Drive, Nordic, Harmony Court**

Status:	Sold	Built:	1991	Price:	\$1,099,000
Type:	Chalet	List Co:	WREC	Size:	2,850
L. Size:	853.9m2	Bed:	3.0	Bath:	3.00
List Date:	11/08/2002	MLS?:	Y		
Date Sold:	12/09/2002	Sld Price:	\$1,100,000	Includes Furniture?:	N Includes GST?: Y

**4857 4 Painted Cliff, Benchlands, Foxglove**

Status:	Sold	Built:	1988	Price:	\$1,198,000
Type:	Townhouse	List Co:	RE/MAX	Size:	1,700
L. Size:		Bed:	3.5	Bath:	2.00
List Date:	10/09/2002	MLS?:	N		
Date Sold:	12/15/2002	Sld Price:	\$1,150,000	Includes Furniture?:	N Includes GST?: N

**7207 Fitzsimmons Road, White Gold,**

Status:	Sold	Built:	1980	Price:	\$1,199,000
Type:	Chalet	List Co:	WREC	Size:	3,380
L. Size:	9661	Bed:	6.0	Bath:	4.00
List Date:	11/28/2002	MLS?:	N		
Date Sold:	12/20/2002	Sld Price:	\$1,075,000	Includes Furniture?:	N Includes GST?: N

**2269 17 Nordic Drive, Nordic, Ridge**

Status:	Sold	Built:	1998	Price:	\$1,279,000
Type:	Townhouse	List Co:	WREC	Size:	1,525
L. Size:		Bed:	3.0	Bath:	3.00
List Date:	10/26/2002	MLS?:	N		
Date Sold:	12/12/2002	Sld Price:	\$1,279,000	Includes Furniture?:	N Includes GST?: N

**8030 5 Nicklaus Boulevard, Green Lake Estates, Englewood Greens**

Status:	Sold	Built:	1997	Price:	\$1,295,000
Type:	Townhouse	List Co:	WREC	Size:	2,110
L. Size:		Bed:	4.0	Bath:	3.50
List Date:	06/11/2002	MLS?:	N		
Date Sold:	12/06/2002	Sld Price:	\$1,200,000	Includes Furniture?:	N Includes GST?: N

**4891 11 Painted Cliff Road, Benchlands, Painted Cliff**

Status:	Sold	Built:	1992	Price:	\$1,299,000
Type:	Townhouse	List Co:	RE/MAX	Size:	1,241
L. Size:		Bed:	3.0	Bath:	2.00
List Date:	11/21/2002	MLS?:	N		
Date Sold:	12/20/2002	Sld Price:	\$1,235,000	Includes Furniture?:	Y Includes GST?: N

**6327 Fairway Drive, Whistler Cay Heights,**

Status:	Sold	Built:	1981	Price:	\$1,400,000
Type:	Chalet	List Co:	WREC	Size:	4,000
L. Size:		Bed:	5.5	Bath:	2.50
List Date:	12/01/2002	MLS?:	N		
Date Sold:	12/12/2002	Sld Price:	\$1,375,000	Includes Furniture?:	N Includes GST?: Y