



No Picture Available

10004 Koocha Road, D'Arcy,

Status:	Sold	Built:	OT	Price:	\$160,000	*
Type:	Chalet	List Co:	RE/MAX	Size:	900	
L. Size:	8800	Bed:	1.0	Bath:	1.00	
List Date:	06/23/2008	MLS?:	Y			
Date Sold:	07/17/2008	Sld Price:	\$160,000	Includes Furniture?:	Y	Includes GST?: N

**7370 40 Highway 99, Pemberton,**

Status:	Sold	Built:	1996	Price:	\$169,900	*
Type:	Mobile Home	List Co:	RE/MAX	Size:	924	
L. Size:		Bed:	3.0	Bath:	2.00	
List Date:	03/10/2008	MLS?:	Y			
Date Sold:	07/18/2008	Sld Price:	\$140,000	Includes Furniture?:	N	Includes GST?: N

**1470 7 Laurel Street, Pemberton, Mountain View Manor**

Status:	Sold	Built:	1980	Price:	\$229,900	*
Type:	Townhouse	List Co:	WREC	Size:	850	
L. Size:		Bed:	2.0	Bath:	1.00	
List Date:	05/12/2008	MLS?:	N			
Date Sold:	07/11/2008	Sld Price:	\$225,000	Includes Furniture?:	N	Includes GST?: N

**7416 24 Flint Street, Pemberton, Chelsea Place**

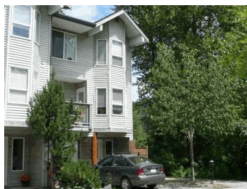
Status:	Sold	Built:	1976	Price:	\$267,000	
Type:	Townhouse	List Co:	WREC	Size:	1,034	
L. Size:		Bed:	3.0	Bath:	1.00	
List Date:	07/01/2008	MLS?:	Y			
Date Sold:	07/24/2008	Sld Price:	\$260,000	Includes Furniture?:	N	Includes GST?: N

**1444 8 Vine Road, Pemberton, Pioneer Junction**

Status:	Sold	Built:	2004	Price:	\$284,999	
Type:	Condominium	List Co:	WREC	Size:	784	
L. Size:		Bed:	2.0	Bath:	1.00	
List Date:	05/22/2008	MLS?:	Y			
Date Sold:	07/02/2008	Sld Price:	\$282,000	Includes Furniture?:	N	Includes GST?: N

*The Picture will be available soon!!***1830 Portage Road, Pemberton,**

Status:	Sold	Built:	0	Price:	\$379,000	
Type:	Mobile Home	List Co:	RE/MAX	Size:	0	
L. Size:		Bed:	2.0	Bath:	1.00	
List Date:	05/14/2008	MLS?:	N			
Date Sold:	07/11/2008	Sld Price:	\$357,000	Includes Furniture?:	N	Includes GST?: N

**7408 16 Cottonwood Road, Pemberton, Cottonwood Court**

Status:	Sold	Built:	1995	Price:	\$382,000	
Type:	Townhouse	List Co:	RE/MAX	Size:	1,538	
L. Size:		Bed:	3.0	Bath:	2.50	
List Date:	06/27/2008	MLS?:	Y			
Date Sold:	07/22/2008	Sld Price:	\$375,000	Includes Furniture?:	N	Includes GST?: N

**9370 Pemberton Portage Road, D'Arcy,**

Status:	Sold	Built:	1986	Price:	\$396,000	
Type:	Chalet	List Co:	RE/MAX	Size:	870	
L. Size:	0.7 acres	Bed:	1.0	Bath:	1.00	
List Date:	06/23/2008	MLS?:	Y			
Date Sold:	07/25/2008	Sld Price:	\$337,500	Includes Furniture?:	N	Includes GST?: N

**7360 2 Pemberton Farm Road, Pemberton, Pemberton Plateau Townhomes**

Status:	Sold	Built:	2005	Price:	\$410,000	*
Type:	Townhouse	List Co:	RE/MAX	Size:	1,832	
L. Size:		Bed:	3.0	Bath:	2.50	
List Date:	04/29/2008	MLS?:	Y			
Date Sold:	07/24/2008	Sld Price:	\$408,000	Includes Furniture?:	N	Includes GST?: N

**1414 Poplar Street, Pemberton,**

Status:	Sold	Built:	1982	Price:	\$469,000	
Type:	Chalet	List Co:	SWCR	Size:	1,800	
L. Size:		Bed:	4.0	Bath:	3.00	
List Date:	06/25/2008	MLS?:	Y			
Date Sold:	07/14/2008	Sld Price:	\$450,000	Includes Furniture?:	N	Includes GST?: N

**1746 Pinewood Drive, Pemberton,**

Status:	Sold	Built:	2001	Price:	\$539,000	*
Type:	Chalet	List Co:	WREC	Size:	2,400	
L. Size:	8665	Bed:	4.0	Bath:	2.50	
List Date:	11/16/2007	MLS?:	Y			
Date Sold:	07/08/2008	Sld Price:	\$529,000	Includes Furniture?:	N	Includes GST?: N

**1731 Pinewood Drive, Pemberton,**

Status:	Sold	Built:	2002	Price:	\$649,000	
Type:	Chalet	List Co:	WREC	Size:	2,300	
L. Size:	15500	Bed:	4.0	Bath:	3.00	
List Date:	01/29/2008	MLS?:	Y			
Date Sold:	07/30/2008	Sld Price:	\$622,000	Includes Furniture?:	N	Includes GST?: N

**1740 Pinewood Drive, Pemberton,**

Status:	Sold	Built:	2000	Price:	\$649,000	
Type:	Chalet	List Co:	WREC	Size:	2,300	
L. Size:	8000	Bed:	3.5	Bath:	2.50	
List Date:	05/12/2008	MLS?:	N			
Date Sold:	07/18/2008	Sld Price:	\$622,500	Includes Furniture?:	N	Includes GST?: N

**7305 Pinewood Place, Pemberton,**

Status:	Sold	Built:	2005	Price:	\$859,000	*
Type:	Chalet	List Co:	RE/MAX	Size:	3,408	
L. Size:	10720	Bed:	3.0	Bath:	2.50	
List Date:	02/22/2006	MLS?:	N			
Date Sold:	07/10/2008	Sld Price:	\$820,000	Includes Furniture?:	N	Includes GST?: N

**9661 Devine Street, Devine,**

Status:	Sold	Built:	1980	Price:	\$399,000	
Type:	Chalet	List Co:	WREC	Size:	1,824	
L. Size:	1.83 acres	Bed:	3.0	Bath:	1.50	
List Date:	06/13/2008	MLS?:	Y			
Date Sold:	07/08/2008	Sld Price:	\$393,000	Includes Furniture?:	N	Includes GST?: N

**Lot 4 Seton Portage, Anderson Lake,**

Status:	Sold	Built:		Price:	\$499,000	
Type:	Vacant Land	List Co:	SWCR	Size:		
L. Size:	2 Acres	Bed:		Bath:		
List Date:	06/13/2008	MLS?:	N			
Date Sold:	07/03/2008	Sld Price:	\$450,000	Includes Furniture?:	N	Includes GST?: N