

FEATURE SHEET

A modern mixed-use community designed by the award winning IBI Group comprised of two residential towers, an 80,000 sq.ft. office building and over 90,000 sq.ft. of retail space on the ground level including a full-service grocery store. Located at the corner of 13th and Lonsdale, homeowners will enjoy unrivaled amenities and some of the best views of the Lower Mainland and North Shore Mountains.

Suite Finishes

- Two colour schemes to personalize your home:
Burrard Inlet (Scheme A) and Indian Arm (Scheme B)
- Contemporary wide plank laminate flooring throughout entry, living and dining areas with the option to upgrade to engineered hardwood
- 12" x 24" natural honed travertine flooring in bathrooms
- 12" x 24" ceramic tile flooring in laundry closets
- 100% Nylon stain-resistant carpeting throughout bedrooms
- Closets outfitted with built-in melamine closet organizers
- Whirlpool full size high-efficiency front-loading stacking washer and dryer
- 95% UV blocking white roller blinds on all exterior windows
- Flat painted ceilings
- Patios and/or balconies in all homes
- Bike friendly facility with workshop and tools

Kitchens

- 30" integrated paneled Fhiaba refrigerator or 24" integrated paneled Blomberg refrigerator both with bottom mounted freezers
- 30" Italian Fulgor Milano stainless steel 5 burner gas cooktop
- 30" Italian Fulgor Milano convection wall oven
- Blomberg Energy Star rated integrated paneled dishwasher
- Slim profile Faber Hood Fan with under counter 1.6 cu ft Panasonic Microwave surrounded by a trim kit or combination Panasonic Microwave Hood Fan mounted above the cooktop (refer to floorplan)

- Solid 1 ½" double nose composite countertops with extended breakfast bar with the option to upgrade to honed natural stone (Marble for scheme A, Travertine for scheme B)
- Stone slab overheight backsplash, matching the countertop finish
- Custom flat-panel wood cabinets with rift-cut oak veneer face featuring wood gables and island backs
- Extra-deep stainless steel under-mounted sink
- Kohler polished chrome kitchen faucet
- Cabinets feature modern pulls and soft-close mechanism, with a convenient pull-out basket mounted in cabinet below sink
- Pot lights and under cabinet puck lights in kitchen to illuminate work space

Bathrooms

- 12" x 24" natural travertine stone flooring with NuHeat heated floors in master ensuite
- Solid marble countertops with 3" high waterfall face and 6" high backsplash
- Flat-panel wood cabinets with rift-cut oak veneer face and stainless steel pulls
- Sleek and simple under-mount sink with graceful single lever faucet
- Deep soaker tub with natural stone tile apron front or deck
- Master ensuite feature natural stone tile surrounding tub and on shower walls
- Guest bathrooms feature large format ceramic tile surrounding tub and on shower walls
- All showers include convenient recessed tile niche for storage
- Frameless glass enclosed shower with tiled base equipped with single lever, pressure balanced control and multi-function adjustable showerhead
- Sleek dual flush Kohler toilet
- Large medicine cabinet included in all bathrooms
- Large mirrors accentuated by modern wall sconces and pot lighting



CENTREVIEW



FEATURE SHEET

CentreView Wellness Club

- Exclusive to homeowners – 10,000 sq.ft. of indoor and 17,000 sq.ft. of outdoor amenities including:
 - 3,200 sq.ft. professionally-equipped fitness centre
 - Outdoor pool and hot tub with lounge area
 - Separate men's and women's change rooms
 - Sauna & Steam Room
 - Games Room
 - Squash Court
 - Meeting Room/Media Room
 - Large entertainment lounge with kitchen
 - 2 Guest Suites
 - Playground area
 - Outdoor BBQ
 - Beautifully landscaped terrace

Safety & Security

- Convenient and secure key-fob proximity reader and floor specific access
- Well-lit underground parking with video surveillance and security gates
- Well-lit storage and bike rooms with motion sensors
- Homes prewired for in-suite security systems
- Fire sprinkler system and smoke detectors in all homes and common areas
- Solid core entry door with peephole and deadbolt

Building Features

- Expansive public streetscapes along Lonsdale and 15th Avenue, featuring outdoor seating, public art, and premier shops and services including Whole Foods
 - Stunning panoramic views of Mount Baker, the Gulf Islands and the North Shore Mountains
 - Full commitment to 20-30% above ASHRAE 2007 (90.1), the highest residential energy performance standards in the City of North Vancouver – including premium technology and energy systems throughout the development and direct connection to the Lonsdale Energy Corporation
 - Spacious, modern homes with expansive windows that maximize natural light and sweeping views
 - Large outdoor decks and terraces perfect for entertaining friends and family
 - Increased security and life safety elements incorporated throughout the development that satisfy the newly introduced Building Security Bylaw standards
 - Double-glazed, Low-E windows with thermal and acoustic engineering, designed to reduce noise transfer while increasing UV protection and insulation
- ### Peace of Mind
- Monitored fire sprinklers and smoke detectors in all homes
 - State-of-the-art security systems, including electronic keyless lobby entry phone, access controls to each floor, and gated keyless underground parking for residents and visitors
 - Secure, well-lit storage lockers and separate bike room
 - Comprehensive 2-5-10 year home warranty protection:
 - 2-year coverage on labour and materials
 - 5-year coverage on building envelope
 - 10-year coverage on major structural items





CENTREVIEW

omni
group



18 floors.

3-17

24 floors.



CENTREVIEW

omniTM
group



 CENTREVIEW

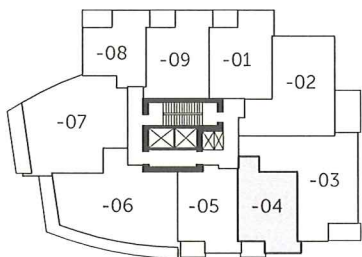
omni[™]
group



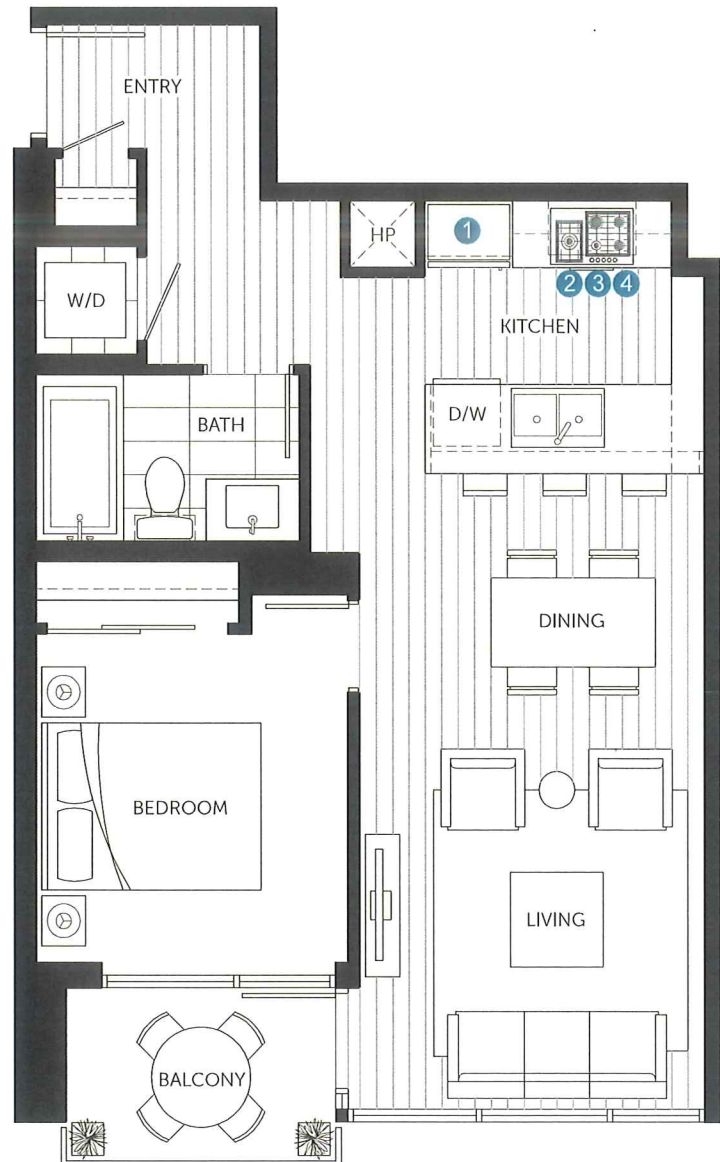
Plan B 1 Bedroom

590 SQ. FT. (approx.)

Units: 304 - 1504



3rd - 15th Floor
Tower A



List of Appliances:

- ① 30" Integrated Fhiaba Refrigerator
- ② 30" Fulgor Milano Gas Cooktop
- ③ 30" Panasonic Combination Microwave and Hoodfan
- ④ 30" Fulgor Milano Convection Oven

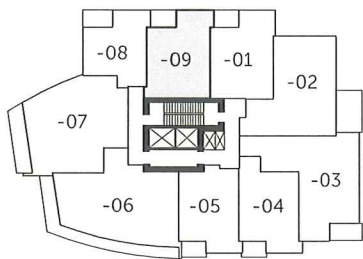
Dimensions, square footage, floor plates and floor plans are approximate only. The developer reserves the right without notice to make modifications to dimensions, square footage, floor plans, floor plates, landscaping design, project design, materials and specifications to maintain the high standard of this development. The Developer may also make such further modifications as are permitted by the disclosure statement and the contract of purchase and sale between the purchaser and developer. E.S.O.E.



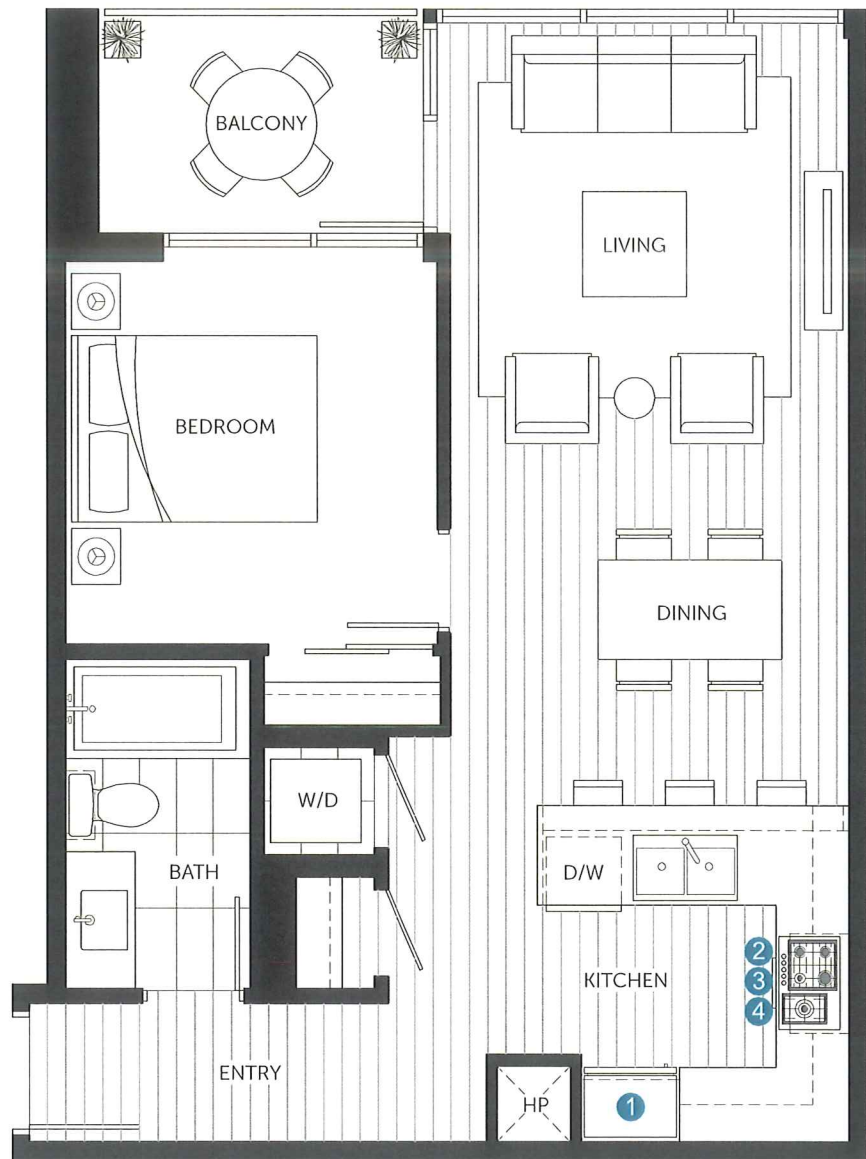
Plan E 1 Bedroom

635 SQ. FT. (approx.)

Units: 309 - 1509



3rd - 15th Floor
Tower A



List of Appliances:

- ① 30" Integrated Fhiaba Refrigerator
- ② 30" Fulgor Milano Gas Cooktop
- ③ 30" Panasonic Combination Microwave and Hoodfan
- ④ 30" Fulgor Milano Convection Oven

Dimensions, square footage, floor plates and floor plans are approximate only. The developer reserves the right without notice to make modifications to dimensions, square footage, floor plans, floor plates, landscaping design, project design, materials and specifications to maintain the high standard of this development. The Developer may also make such further modifications as are permitted by the disclosure statement and the contract of purchase and sale between the purchaser and developer. E.&O.E.





CENTREVIEW

Plan F 2 Bedroom

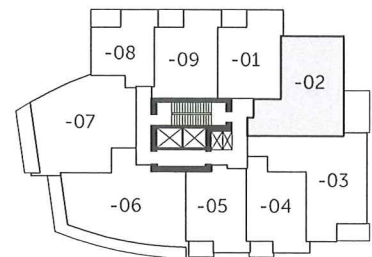
880 SQ. FT. (approx.)

Units: 402 - 1502



List of Appliances:

- ① 30" Integrated Fhiaba Refrigerator
- ② 30" Fulgor Milano Gas Cooktop
- ③ 30" Faber Cristal Slim Line Hoodfan
- ④ 30" Fulgor Milano Convection Oven
- ⑤ Panasonic Microwave with Trim Kit



4th - 15th Floor
Tower A



Dimensions, square footage, floor plates and floor plans are approximate only. The developer reserves the right without notice to make modifications to dimensions, square footage, floor plans, floor plates, landscaping design, project design, materials and specifications to maintain the high standard of this development. The Developer may also make such further modifications as are permitted by the disclosure statement and the contract of purchase and sale between the purchaser and developer. E.S.O.E.





Plan I

2 Bedroom + Flex

Living: 1,060 SQ. FT. (approx.)

Outdoor: 255 SQ. FT. (approx.)

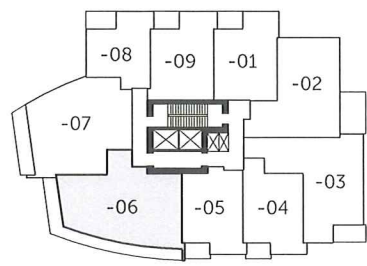
Units: 406 - 1506, 1604



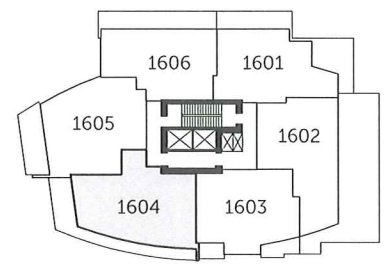
BALCONY EXTENT VARIES PER FLOOR

List of Appliances:

- ① 30" Integrated Fhiaba Refrigerator
- ② 30" Fulgor Milano Gas Cooktop
- ③ 30" Faber Cristal Slim Line Hoodfan
- ④ 30" Fulgor Milano Convection Oven
- ⑤ Panasonic Microwave with Trim Kit



4th - 15th Floor
Tower A



16th Floor
Tower A



Dimensions, square footage, floor plates and floor plans are approximate only. The developer reserves the right without notice to make modifications to dimensions, square footage, floor plans, floor plates, landscaping design, project design, materials and specifications to maintain the high standard of this development. The Developer may also make such further modifications as are permitted by the disclosure statement and the contract of purchase and sale between the purchaser and developer. E.&O.E.

