

STERLING

IN COQUITLAM

FAMILY: THE BEST REASON TO CALL STERLING HOME

CALDER

4 BEDROOMS, 2 1/2 BATHROOMS, 3,020 SQ. FT. (INCLUDING UNFINISHED BASEMENT)



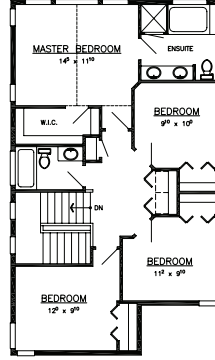
CALDER A



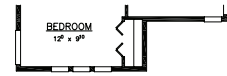
CALDER B



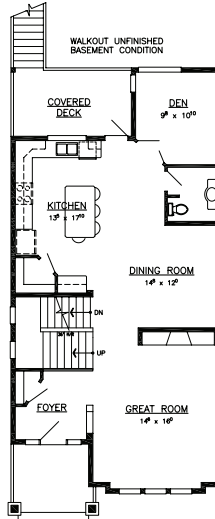
CALDER C



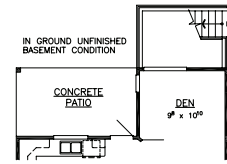
UPPER FLOOR
895 SQ. FT.



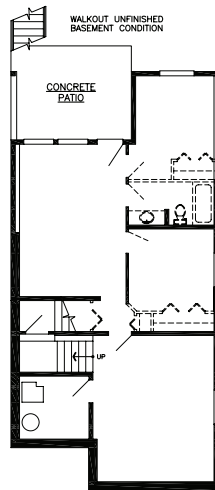
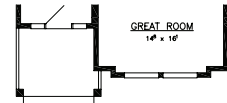
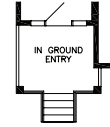
CALDER B



MAIN FLOOR
1070 SQ. FT.



CALDER B



UNFINISHED BASEMENT
1055 SQ. FT.

