

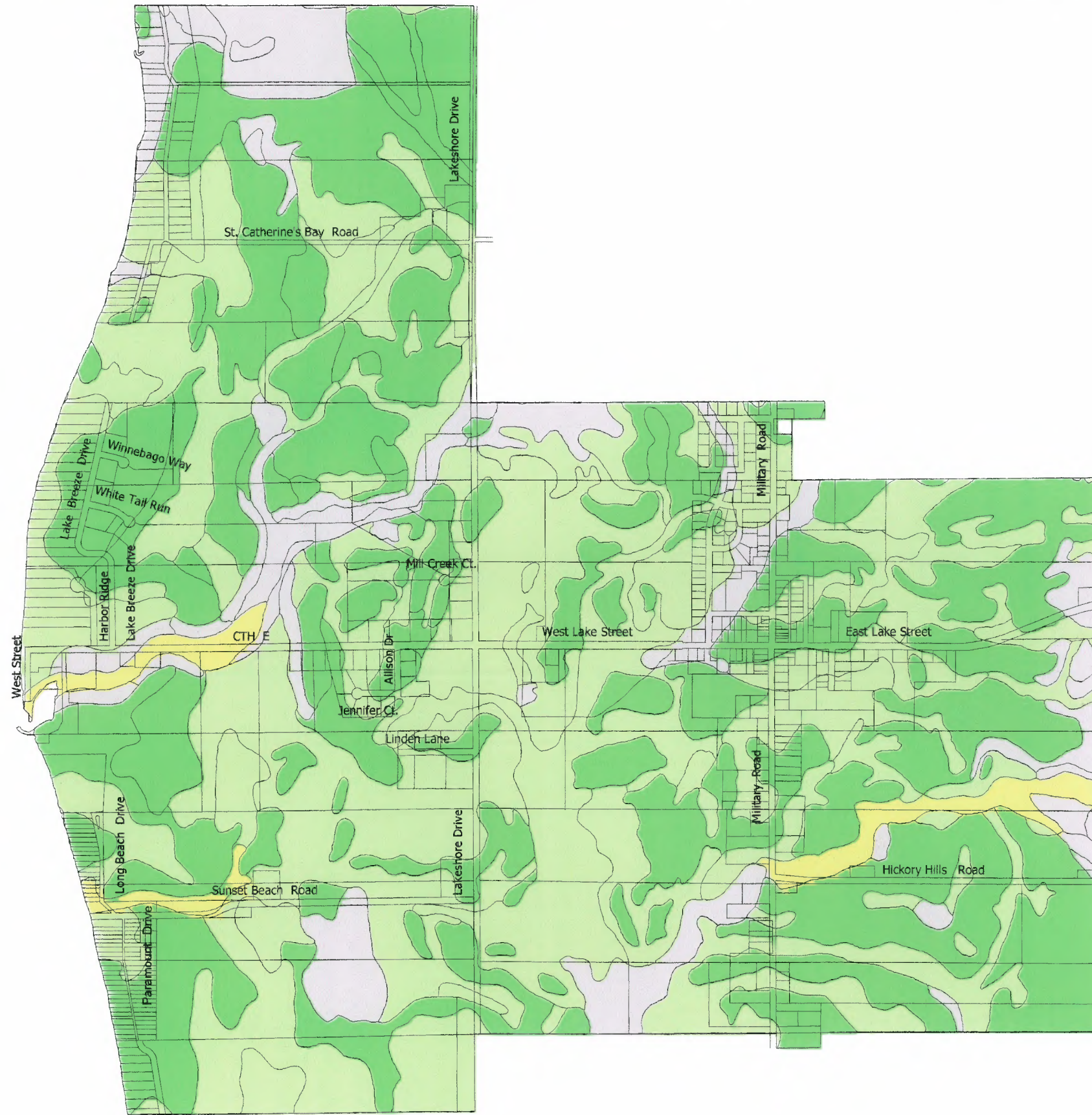
# Village of Stockbridge

## Soil Suitability for Agricultural Use



### Legend

- Class 1 (Prime Farmland)
- Class 2 (Prime if drained)
- Class 3 (Prime if not flooded)
- Classified as Not Prime Farmland



Prime Farmland is considered Prime if all of the soil properties are favorable for row crop production.

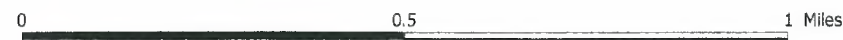
Non-Prime soils can be productive with proper management controls.

### Disclaimer

Soils Data extracted from Standard State Soil Survey Database as provided by NRCS, USDA, Natural Resources Conservation Services.

### Disclaimer

This base map was created by Martenson and Eisele, Inc. While intended to be accurate as possible, the map accuracy is limited and shall not be used as a substitute for an accurate field survey.



### Martenson & Eisele, Inc.

Planning - Surveying - Engineering - Architecture

1919 American Court, Neenah, WI 54956

Phone (920) 731-0381 Fax (920) 733-8578

[www.martenson-eisele.com](http://www.martenson-eisele.com)

[info@martenson-eisele.com](mailto:info@martenson-eisele.com)

pnav155910so\_12-30-02