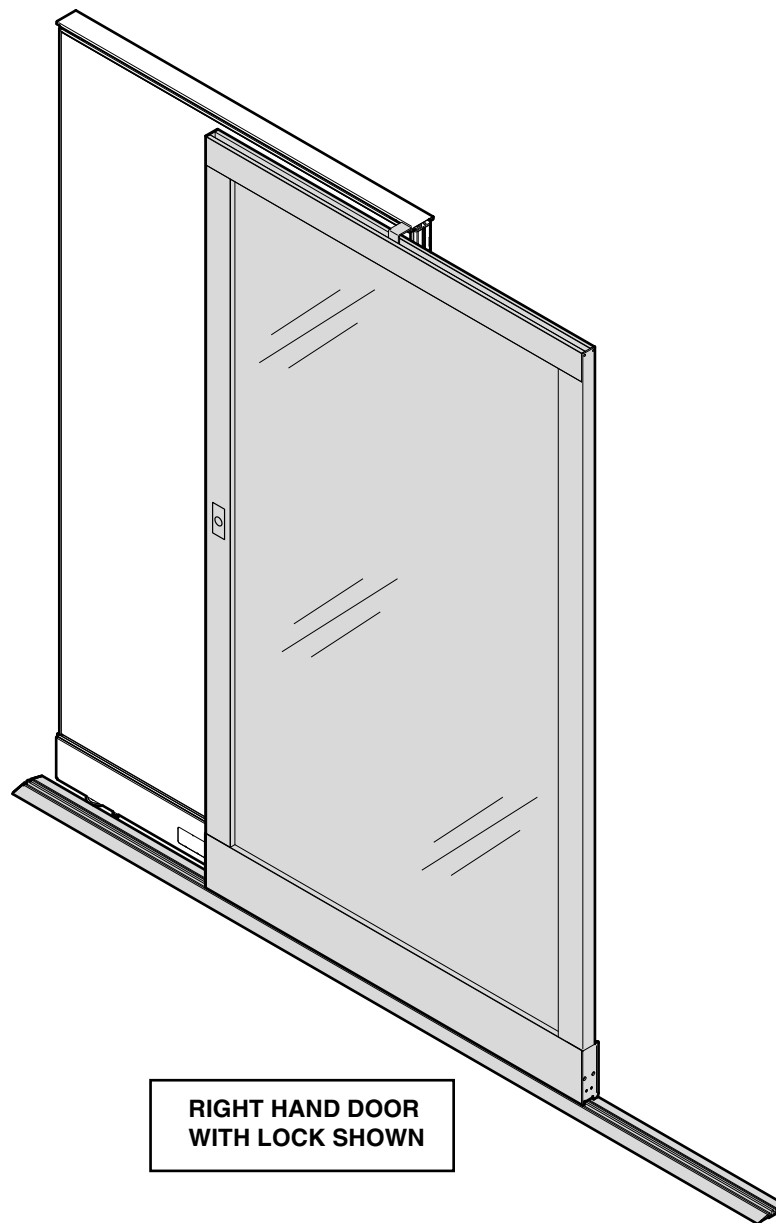
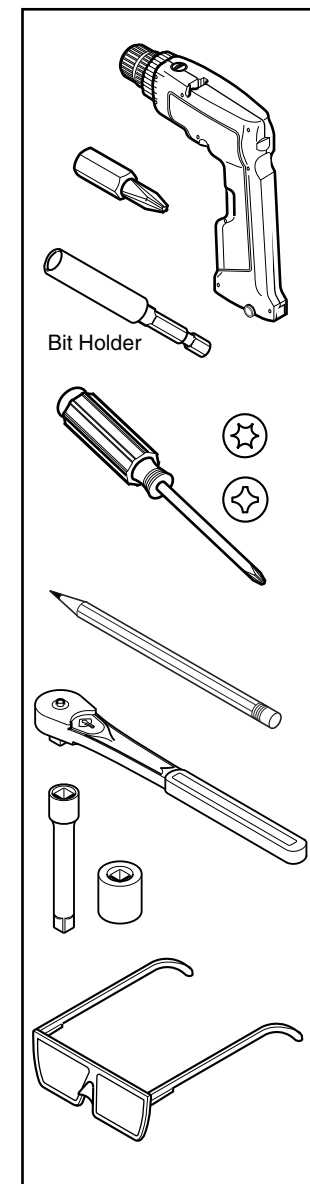


## Answer & kick® Sliding Door Lock Retrofit Kit to Convert Pre-2008 Lock to New or Non-Locking Door



**RIGHT HAND DOOR  
WITH LOCK SHOWN**



If you have a problem, question, or request, call your local dealer, or Steelcase Line 1 at **888.STEELCASE** (888.783.3522) for immediate action by people who want to help you. (Outside the U.S.A., Canada, Mexico, Puerto Rico, and the U.S. Virgin Islands, call: 1.616.247.2500) Or visit our website: [www.steelcase.com](http://www.steelcase.com)

© 2015 Steelcase Inc.  
Grand Rapids, MI 49501  
U.S.A.

Printed in U.S.A.

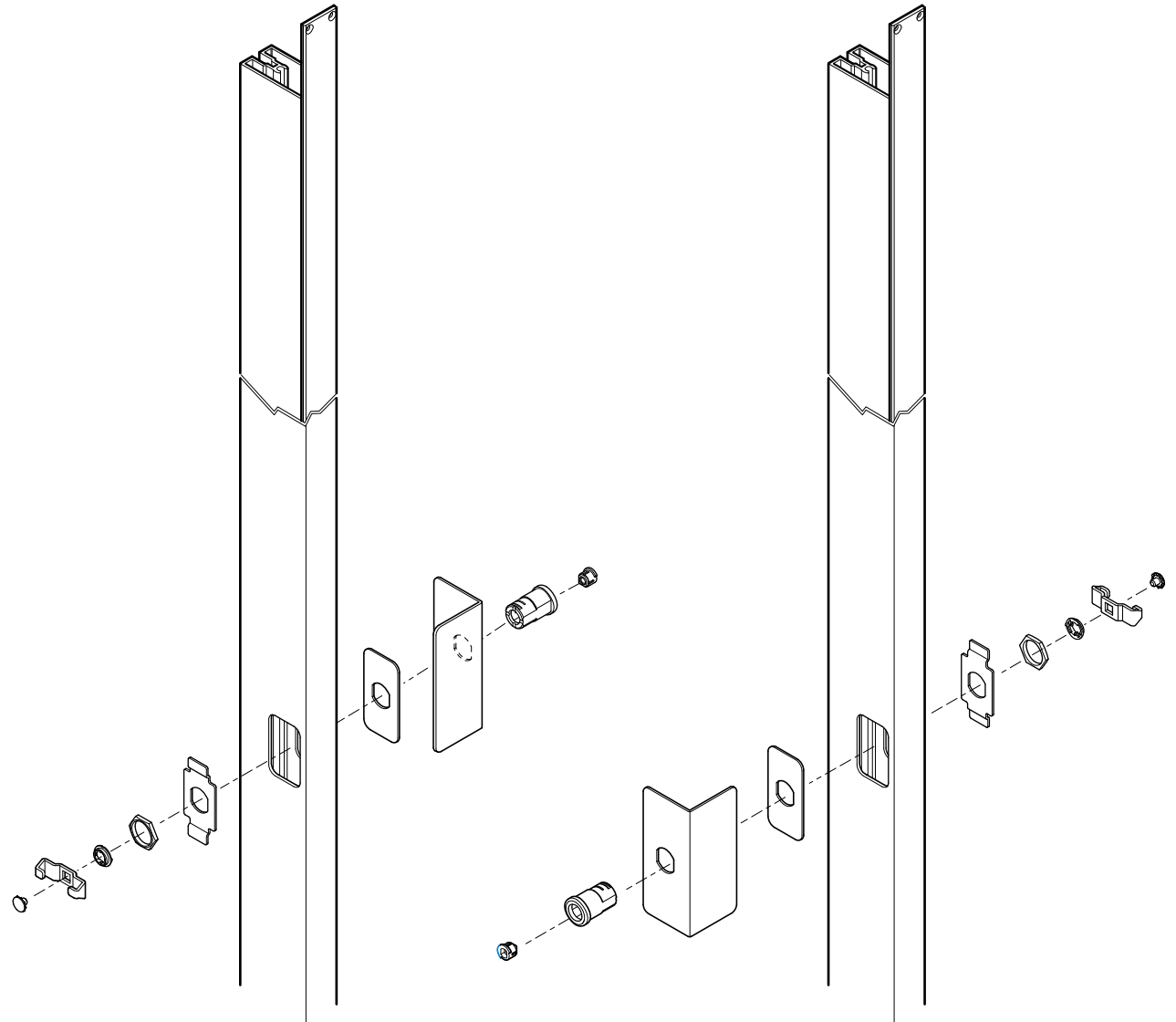
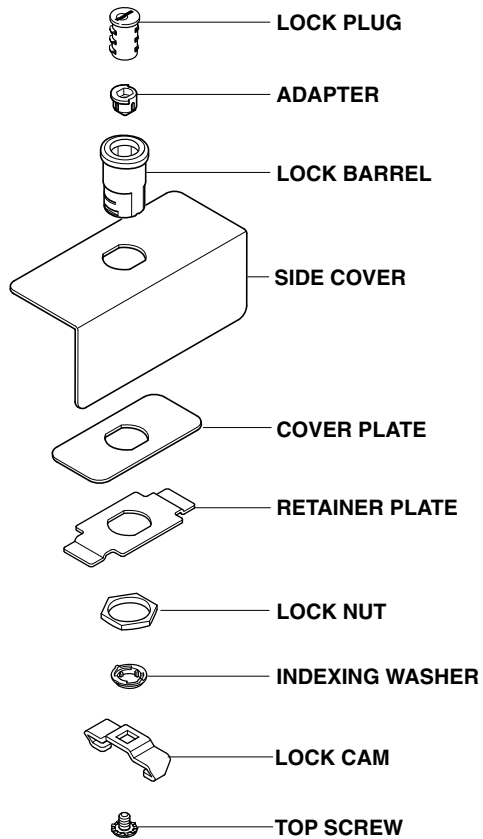
## RIGHT HAND DOOR

(flip components to convert to left hand door)

## LEFT HAND DOOR

(flip components to convert to right hand door)

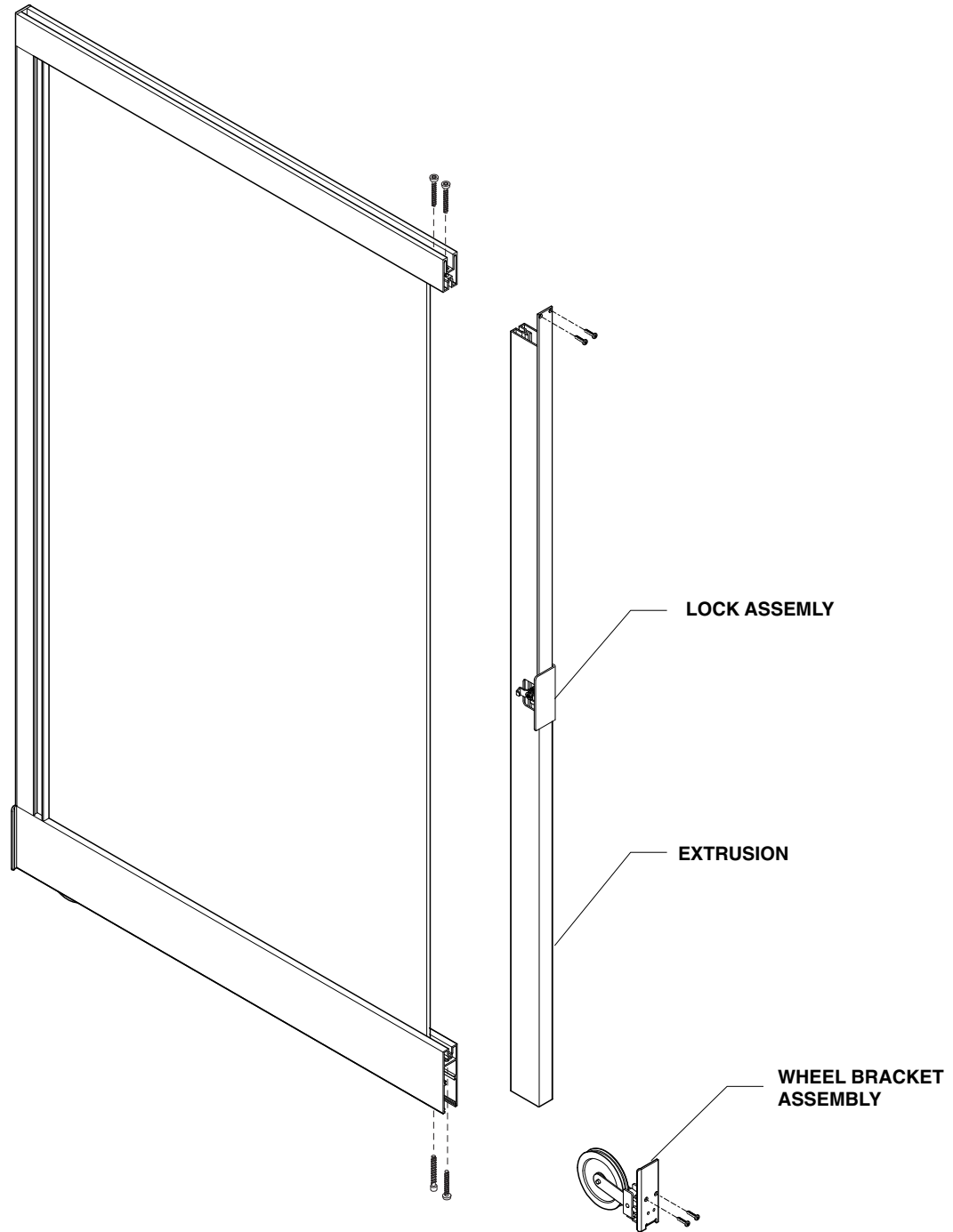
1. Determine how the lock should be installed in the extrusion. If it is correct, proceed to step 3.
2. If the lock is not correct, remove the screw, lock latch, nut and remaining lock parts. Flip them around and install them on the opposite side of the extrusion in the reverse order of disassembly .



## REMOVE EXTRUSION

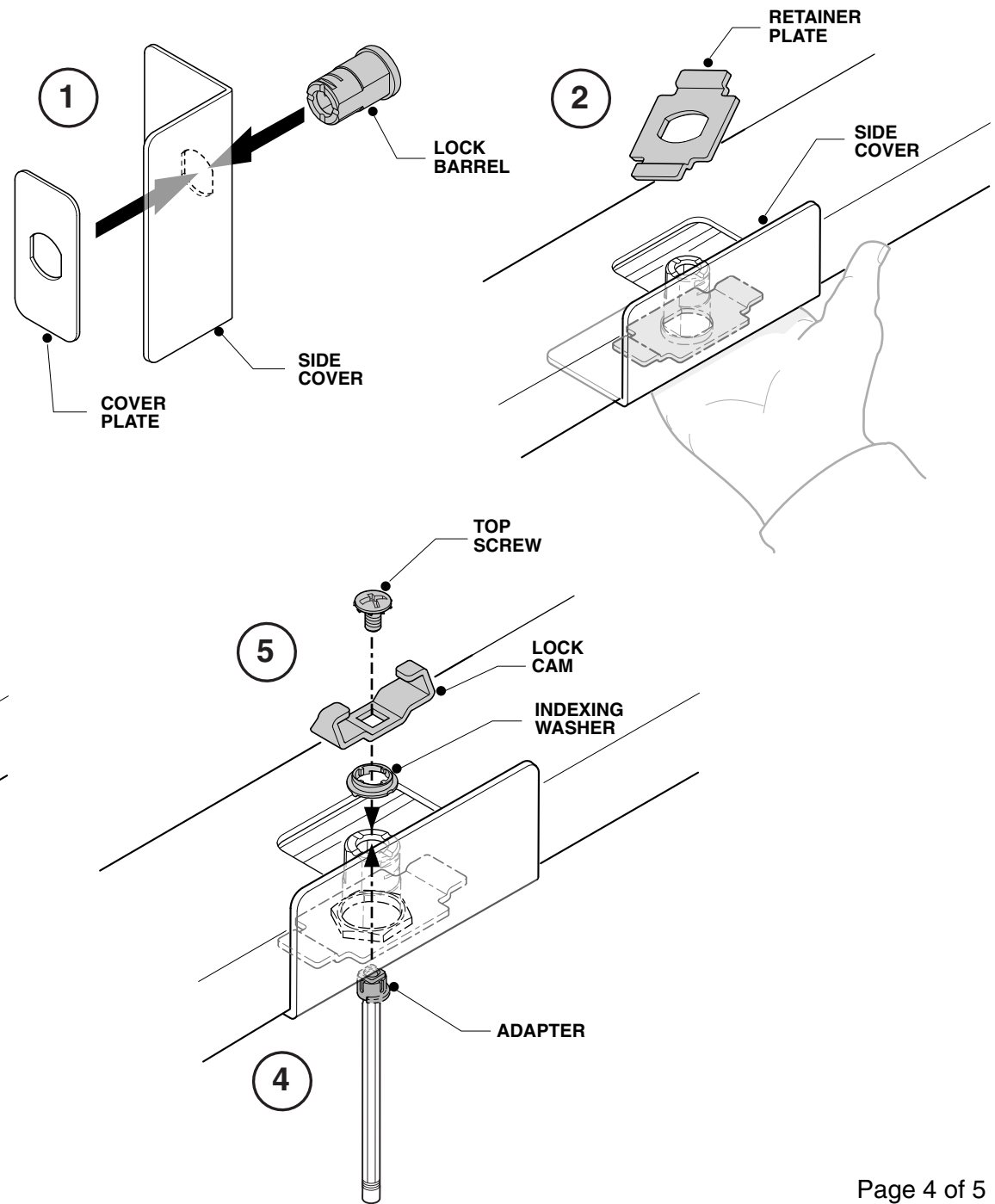
**3.** Remove the (2) screws in the wheel bracket and the wheel bracket assembly. Remove the (2) screws in the bottom of the extrusion. Remove the (2) screws in the top of the extrusion. Remove the (2) screws in the side of the extrusion at the top. Slide the extrusion off from the door. Replace with the lock conversion kit extrusion in reverse order.

**NOTE:** Do not discard screws. Needed for reassembly.



## ASSEMBLE LOCK

1. Insert the lock barrel through the side cover and slide the cover plate over the lock barrel.
2. Tilt the retainer bracket and set inside opening in extrusion. Lift the side cover, cover plate and lock barrel up into opening, and through hole in retainer plate.
3. Thread the lock nut onto the lock barrel and hand tighten with hand socket.
4. Place the adapter on a pencil as shown. Insert the adapter up through the lock barrel and hold in place.
5. Place the indexing washer over the adapter. Place the lock cam over the washer and align the flat edge of the cam with the slot on the lock barrel. Install the top screw into the lock adapter.
6. Insert lock plug.



## REINSTALL EXTRUSION

7. Reverse the procedure in Step 3 to install the lock conversion kit extrusion on the door.

