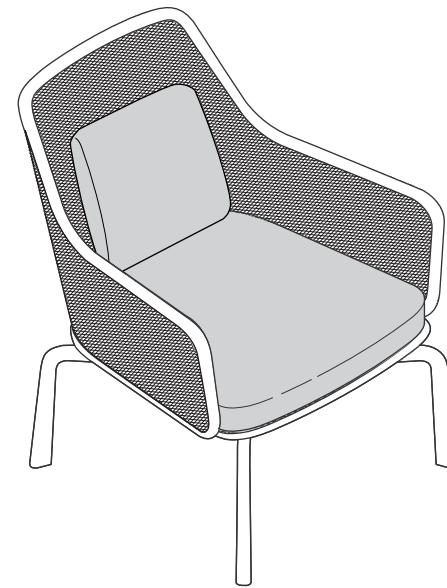


Cross Chair
with Seat Cushion



Cross Chair
with Seat Cushion and Pillow

If you have a problem, question, or request, call
your local dealer, or Coalesse at 1.800.627.6770
Or visit our website: www.coalesse.com

© 2010 Coalesse
San Francisco, California U.S.A.

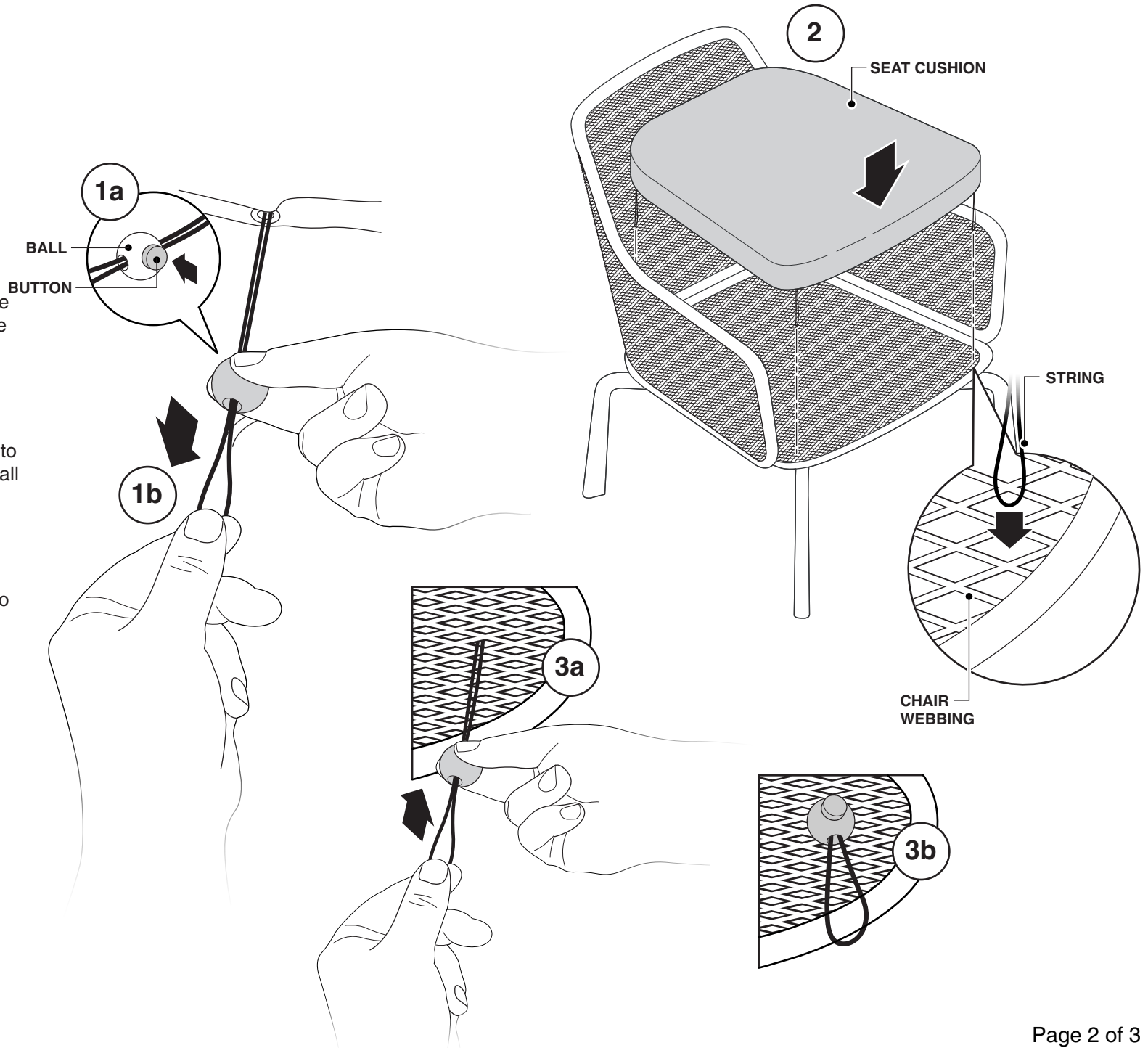
Printed in U.S.A.

Installing a Seat Cushion to a Chair

1. On the seat cushion, locate each ball and string. There are four (4) total. Press button on ball inward (1a) and slide ball off string (1b).

2. Lower the seat cushion onto the chair and carefully thread all four (4) strings through the chair webbing.

3. Place each ball back onto string and slide upward (3a) so it fits snugly under the chair webbing (3b).



Installing a Seat Cushion with Pillow to a Chair

1. On the seat cushion, locate each ball and string. There are four (4) total. Press button on ball inward (1a) and slide ball off string (1b).

2. Route rear seat cushion strings through each eyelet on the pillow as shown.

3. Lower the seat cushion and pillow onto the chair and carefully thread all four (4) strings through the chair webbing.

4. Place each ball back onto string and slide upward (4a) so it fits snugly under the chair webbing (4b).

